



Forage harvesters

JAGUAR

870 860 850 840



The only choice.
The JAGUAR.





Is there an alternative to the best result? To optimal efficiency with minimal fuel consumption?

The challenges facing you are growing. Your requirements count. Ensuring your satisfaction is what drives us in our continuous pursuit of new solutions.

More productivity, more choice, more comfort, more yield: the JAGUAR 800 series offers all these qualities – and in so doing represents a class in its own right.

The only choice.
The JAGUAR models.



jaguar800.claas.com

Innovative and impressive. The advantages.

Spacious, comfortable cab with CEBIS control concept

EASY features for straight-forward data communications and a reduced operator workload

Functional design for optimal clarity and perfect airflow for the cooling system

Automatic frictional connection with front attachment via quick coupler



Silage additive dosage based on dry matter content

Efficient hydraulic system and
DYNAMIC POWER

Diesel tank capacity of up to 1300 l
for extended working

Chopping unit with direct drive and
quick-stop system

Proven crop flow with
MULTI CROP CRACKER and
accelerator gap setting

Unique accessibility concept for fast and
straight-forward maintenance

Running gear with mechanical all-wheel drive and excellent
maneuverability





CLAAS

**860
JAGUAR**

40



Contents

Cab

VISTA CAB comfort cab	10
CEBIS	12
Modular data management	14

CPS – CLAAS POWER SYSTEMS

CPS	18
Engines	20
DYNAMIC POWER	24
Running gear	26
Hydraulics and electrics	28
Drive	30

Chopping system

Crop flow	34
Intake	36
V-CLASSIC knife drum	38
Corncracker	40
Crop accelerator	42
QUANTIMETER dry matter sensor	44
Silage additive systems	46
Discharge spout	48

Front attachments

Guidance systems	52
PICK UP	54
DIRECT DISC	56
ORBIS SD, ORBIS	58
RU and CONSPEED	60

EASY – Efficient Agriculture Systems by CLAAS

EASY equipment options	62
TELEMATICS	64

PREMIUM LINE for JAGUAR	66
PREMIUM LINE for ORBIS	68
Maintenance	70
First CLAAS Service	72
Equipment package	74

Features	75
Specifications	76

Familiar but different.
The JAGUAR cab.





- Spacious cab
- Excellent visibility and lighting
- Extremely low noise level
- CEBIS information and control system
- Four seat types – for optimum comfort for everyone

Cab



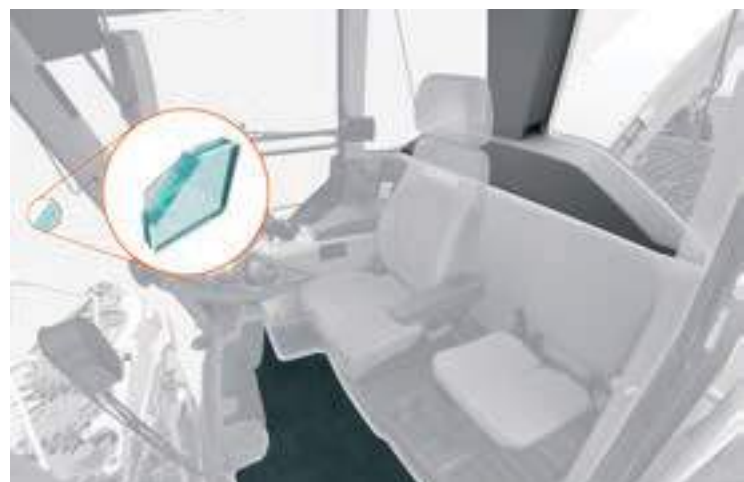
The CLAAS comfort cab.

In the JAGUAR, there is simply nothing to distract you. The steering column and operator's seat can be adjusted to suit each and every operator. Thanks to the clearly laid-out displays and controls, you will feel at home in the JAGUAR in no time. Roller sunblinds, air conditioning, a radio and a coolbox also help to keep operators fresh and alert, no matter how long they are on board.

- Spacious VISTA CAB with two seats
- Glass on all sides for an all-around unrestricted view
- The windshield comes with a circular washer/wiper system
- Side and rear window wipers for a clear all-round view
- Spacious storage compartments
- Cool box with sufficient space for snacks
- Choice of four seat variants
- CEBIS control concept

Optional comfort package.

The sound insulation on the rear window effectively minimizes noise immediately around the operator's head without compromising the all-around visibility. A special windshield reduces reflections in the cab in dark or rainy conditions. Another feature which enhances the comfort package is the floor mat, which is also extremely practical: it can be cleaned quickly by knocking the dirt out of it or by using a high-pressure water jet.



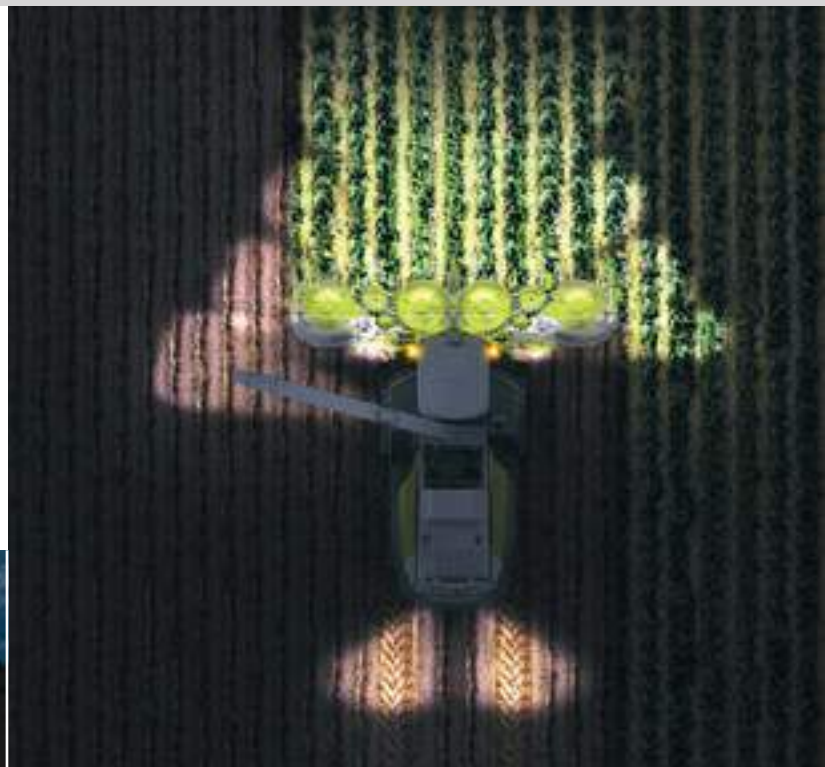
- 1 Standard seat
- 2 Comfort seat
- 3 Swiveling seat
- 4 Premium seat



Ergonomic and individualized. Operating comfort and convenience.

The lighting concept.
Excellent visibility at all times.

Time is no barrier to productivity with the JAGUAR. When darkness falls, simply turn night into day. The appropriate lights can be selected quickly and easily. The service lighting allows maintenance work to be carried out after dark.



VISTA CAB
Comfort cab

Clear and convenient. CEBIS.



The CEBIS control concept.

Information, control, registration and monitoring are the tasks of the CEBIS electronic on-board information system. Distinguished by its clear, logical menu structure, it can be used intuitively.

All key machine settings are configured and displayed centrally here. You can view the harvest progress data, print it and send it via the internet.

CEBIS offers three different user options. Operation of your JAGUAR can be adjusted individually in accordance with the customer's wishes or the operator's skill level.

Fast, manageable, clear and reliable.

- The CEBIS rotary switch is used to control the basic functions
- The additional HOTKEY rotary switch allows direct on-screen control of another principal function
- All switch functions have logical, self-explanatory icons
- A Compact Flash Card makes data exchange particularly easy
- Your hand rests easily on the multifunction lever where you have instant control over the driving speed, as well as numerous other functions

CEBIS information during on-road operation





- 1 Intake on
- 2 Intake stop and reverse
- 3 Discharge spout control
- 4 Header height setting
- 5 Automatic spout swivel
- 6 AUTO FILL / spout park position
- 7 AUTO PILOT
- 8 Information button
- 9 HOTKEY direct menu rotary switch
- 10 HOTKEY direct menu rotary switch
- 11 Escape button
- 12 CEBIS direct menu rotary switch
- 13 CEBIS direct menu rotary switch
- 14 DIRECT ACCESS button
- 15 Chopping system on / off

- 16 Raise/lower discharge spout
- 17 Gear shift
- 18 Silage additive system, main switch
- 19 All-wheel drive
- 20 Diesel engine speed (three steps)
- 21 Fold front attachments



CEBIS harvest mode with night view

CEBIS



Benefit immediately from current data.

You can prepare customer data in CEBIS before running and processing it with CEBIS.

- All the data is backed up when a specific job is completed or the work day comes to an end
- The data can be printed out selectively or transferred by data card for job processing
- With TELEMATICS, the data can also be accessed online with a PC and can be reused, e.g. for customer invoicing

Data management.

1. Job management, standard

It is possible to create a collection of 20 jobs in CEBIS. As a result, all the relevant data is available to you at all times and you also have the option of printing it out.

2. Job management (initial expansion stage)

AGROCOM MAP START software allows you to manage data relating to specific customers and jobs and then transfer this to your PC by means of a Compact Flash Card. Furthermore, TELEMATICS allows you to monitor the job in question online.



Individual data can be printed selectively

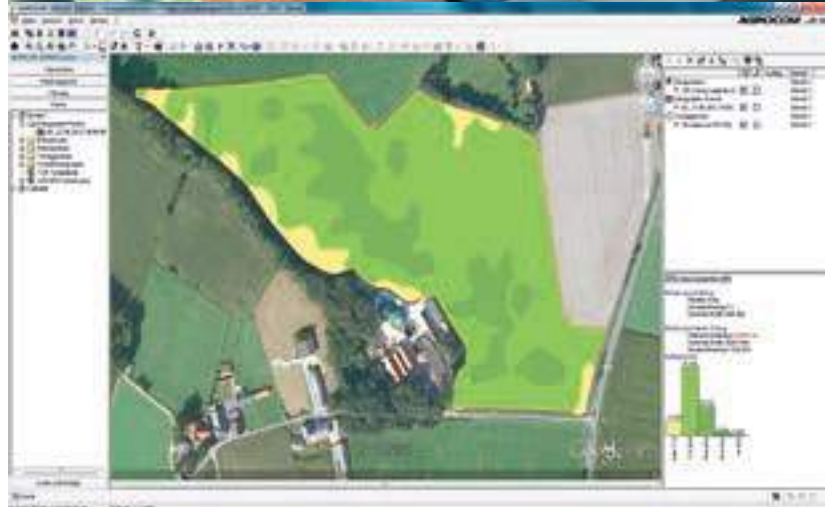


Modular and ready for immediate use. Data management.



3. Job management (second expansion stage): yield mapping

Building on the foundation of the job management function, you can use your JAGUAR to perform yield mapping. The QUANTIMETER and the moisture measurement allow you to determine the yield. At the same time, CEBIS adds geographical coordinates obtained from GPS satellites. All the measured data is stored on a portable chip card to facilitate transfer. The AGROCOM MAP START software is included to enable you to produce informative yield maps to use as a basis for your future production strategy.



Modular data management

Top performance and
cost-effectiveness.
JAGUAR technology.





- Higher performance with outstanding engines
- Cooling system designed for top performance
- DYNAMIC POWER: diesel savings in the partial-load range
- Reliable running gear
- Straight-forward, highly efficient drive system

CPS –
CLAAS POWER SYSTEMS

Unique and outstanding. CPS – CLAAS POWER SYSTEMS.

Optimal drive for best results.

Equipment development at CLAAS means an ongoing effort for even greater efficiency and reliability as well as optimal profitability in the field.

Of course, this applies to all aspects of a CLAAS forage harvester. A case in point is the drive system which is of decisive importance for the performance of the entire machine and which calls for a lot more than just a powerful engine.

In CLAAS POWER SYSTEMS (CPS), we have brought together top-quality components to create a drive system that is in a class of its own – one that always delivers the most efficient power when needed. CPS is ideally matched to the work systems, featuring fuel-saving technology that quickly pays for itself.

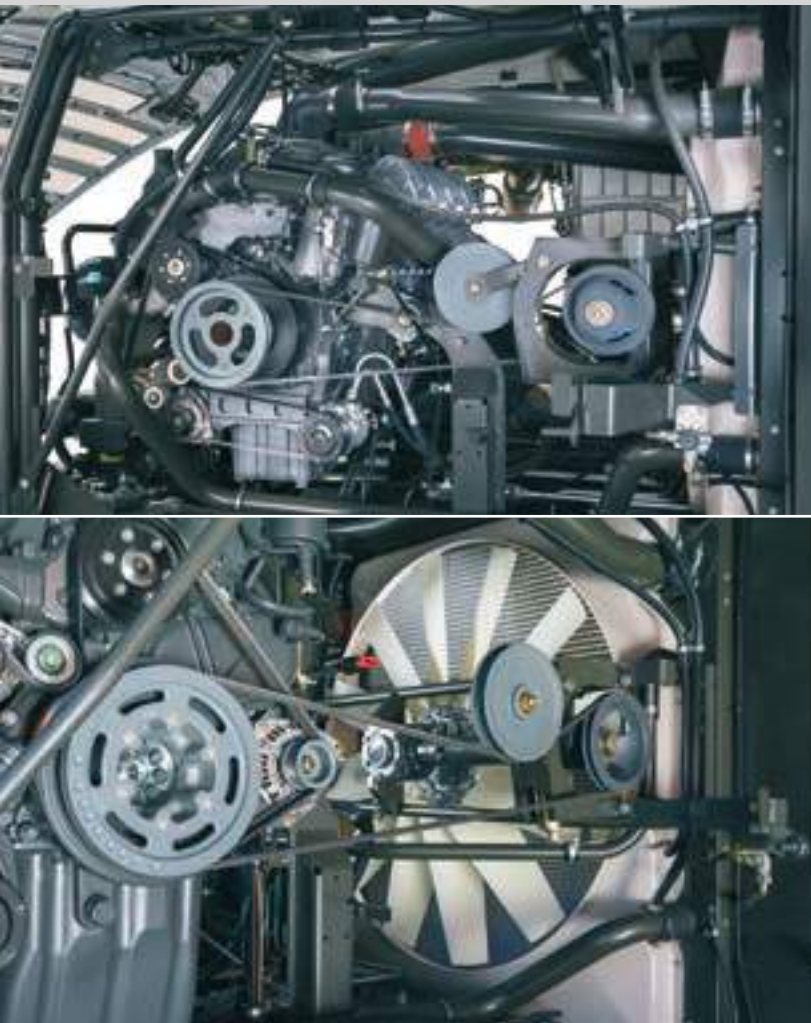
The intelligent DYNAMIC POWER engine control system from CLAAS provides the best possible implementation of the CPS philosophy: optimal, automatic provision of the appropriate power for the JAGUAR in line with requirements. It is another example of our approach to achieving real fuel savings. The decisive factor is not the engine itself but the ability to control the available output intelligently – so you can do more with less.



CPS | CLAAS
POWER
SYSTEMS



Powerful and environmentally compatible. Mercedes-Benz engine technology.



Powerful Mercedes-Benz engines.

CLAAS POWER SYSTEMS encompasses the full range of drive technology and matches it with the appropriate engine to form an optimally tuned and integrated drive system. This results in the highest level of efficiency available in the market.

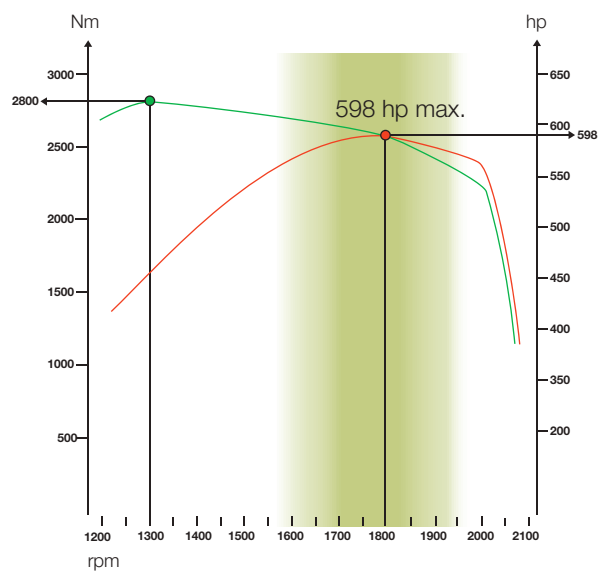
It goes without saying that CLAAS products meet the different emissions standards which apply around the world. In markets where Stage IIIB (Tier 4i) applies, an exhaust-gas aftertreatment system downstream from the engine is used to ensure compliance. This system uses Selective Catalytic Reduction (SCR) to convert the nitrogen oxides in the exhaust flow into nitrogen and water. The urea solution necessary for this is carried in a 130-liter tank. Urea consumption is about 5% of the diesel consumption.



The engine is rubber mounted to the chassis to minimize noise and vibration. This means you get the best of both worlds: immense power reserves plus top driver comfort.

- Fuel-efficient performance with low noise
- Compliance with the statutory emissions limits
- Steady power rise up to the ideal engine speed of 1800 rpm

JAGUAR 870 Stage IIIB (Tier 4i)



JAGUAR engines		870	860	850	840
Stage IIIB (Tier 4i)	Type	OM 502	OM 502	OM 460	OM 460
	kW/hp	440/598	375/510	335/455	294/400



Reliable cooling.

Record-breaking performance is no excuse for breaking out in a sweat. In the JAGUAR, horizontal slab radiators provide effective cooling under all harvesting conditions. The large surface area of the radiator screen keeps air speeds down, thereby reducing dirt build-up. The screen itself is kept clean by a rotating extractor arm.

The airflow from the fan is directed past the engine and can escape practically unhindered through the large air outlet at the rear. As a result, the JAGUAR can be counted on to continue operating reliably even in extremely hot weather.



Effective and reliable. The cooling system.

Breathing easy.

Large air filters ensure long and reliable operation. Pre-treated engine air is drawn in directly from the radiator compartment. When necessary, the filters can be removed without the need for tools and can be cleaned straight away in the field. The integrated compressor delivers 600 l of air per minute at 9.5 bar. This is sufficient to also allow air-driven tools to be operated and to supply the optional trailer braking system which is available for the JAGUAR.



Large tank for extended working.

The extremely well thought-out tank concept lends itself to extended working. In forage harvesters with exhaust gas after-treatment, the urea solution only needs to be replenished during every other refuelling stop.

JAGUAR

emissions standard	Diesel tank	Auxiliary diesel tank (option)	Total diesel capacity	Urea tank
Stage IIIB (Tier 4i)	1000 l	300 l	1300 l	130 l



Engines

Intelligent and efficient. DYNAMIC POWER.



Only as much power as is needed.

The JAGUAR 870 and JAGUAR 860 models can be equipped with the DYNAMIC POWER automatic engine output control system.

Maximum efficiency and throughput are attained when operating at full load. In the partial load range, the engine output is reduced automatically. This makes it possible to achieve fuel savings of up to 10.6%.

DYNAMIC POWER adjusts the engine output optimally to the field conditions in ten steps. This ensures that you are always operating in the most efficient engine speed range.

Smooth sailing with cruise control.

The combination of DYNAMIC POWER and cruise control not only saves fuel but also reduces the strain on the operator to a significant degree. Once an optimum speed has been agreed, the entire harvesting chain can operate extremely efficiently and consistently. JAGUAR forage harvesters with high-capacity engines can therefore also be operated very cost-effectively in smaller-scale settings or under conditions which restrict the ground speed.

- Save diesel during partial-load operation
- Economical, consistent working with cruise control

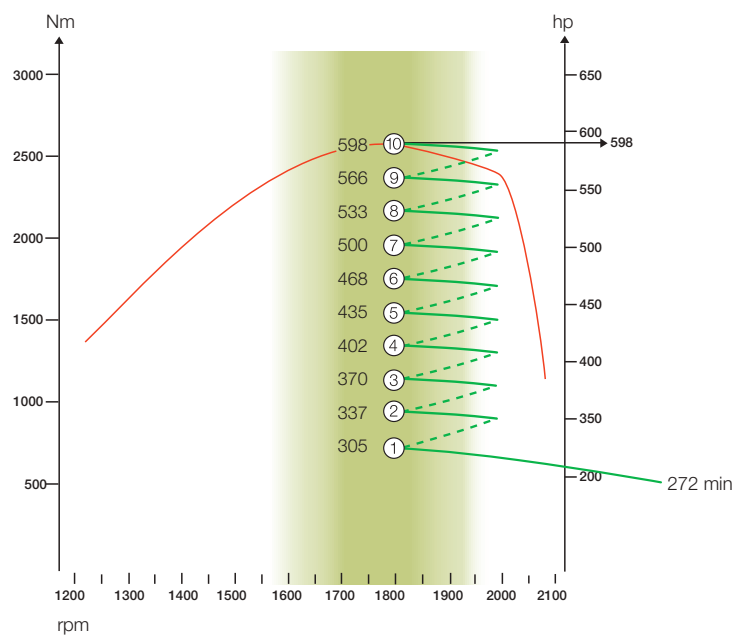




Engine output in hp.

JAGUAR 870 Stage IIIB (Tier 4i)

	JAGUAR 870	JAGUAR 860
	Stage IIIB	Stage IIIB
Step	(Tier 4i)	(Tier 4i)
10	598	510
9	566	487
8	533	463
7	500	439
6	468	415
5	435	392
4	402	368
3	370	344
2	337	320
1	305	296
min	272	272



DYNAMIC POWER



Huge reserves.

With its impressive tractive power, the ground drive is designed to get you through. You can call on huge power reserves, even under the most difficult conditions. A harvesting speed of up to 16.8 km/h is possible in first gear. The small turning radius and increased ground clearance of the JAGUAR 800 series make it extremely maneuverable.

Economical on the road.

When running at top speed on the road, the JAGUAR operates with a drastically reduced engine speed. The electronic ground drive control automatically regulates the engine speed and matches it exactly to the required output. This cuts fuel consumption noticeably and minimizes noise levels.

Active header damping.

This active vibration damping function guarantees that you travel not just quickly, but also with considerably improved comfort. Simply activate the function when on the road, and the hydraulics effectively dampen the movements of the front attachment, making your progress from one job to the next much smoother. Vibration damping is activated automatically when, for example, the front attachment is raised (above working height) when turning at the headland.



High pulling power and reliability. The running gear.

Mechanical all-wheel drive.

Under difficult working conditions, the electrohydraulically activated four-wheel drive provides maximum traction. The power is transferred directly to the rear axle via a drive shaft.

Rear camera: improved view when reversing.

If the JAGUAR is equipped with an optional rear camera, the view from it is shown automatically on the CEBIS monitor when reverse is selected with the control lever. This allows trailers to be coupled safely and improves the operator's view of the surroundings.

- Optimal pulling power
- Very good turning radius for high maneuverability
- Fast, economical on-road operation
- Vibration damping on the road
- Rear camera



Running gear

Clear and straightforward. Hydraulic and electrical systems.



The hydraulics.

The hydraulic valves are clearly laid out on the left side of the machine. Proportional valves for the discharge spout and front attachment control system make for a smoother response when these systems are functioning automatically. In order to leave a consistent stubble profile, even when operating at very high ground speeds, the swivel speed of the ORBIS lateral leveling mechanism, for example, can be adjusted as required in CEBIS.

The vibration damping system is activated automatically once the headland is reached and the front attachment raised past the working height. This additional convenience feature reduces wear and tear on the machine when crossing sprayer wheelings, for example. The front attachment is protected by a correspondingly gentle suspension response.

- Clearly laid-out hydraulic system
- Rapid implementation of function commands
- Efficient control by proportional valves
- Cost-effective maintenance thanks to low-volume oil system



Clean, fast connection
of machine functions



The electrical system.

A straight-forward, convenient control concept demands a fast, reliable electrical system. In the JAGUAR, all the key components are housed securely and centrally in the cab. An expansion box (Option Ready) in the maintenance compartment of the JAGUAR allows additional options to be easily accommodated – for instance if retrofitting:

- PROFI CAM
- AUTO FILL
- ACTISILER 20
- NIR Sensor
- 300 l auxiliary diesel tank

Customer benefits:

- Electrics housed securely in cab
- CAN-bus system with diagnostic function
- Reliable, high-quality cable connections
- High-quality expansion box for adaptation of additional variants





Trend-setting advantages: setting the pace for two decades.

The revolutionary drive concept of the JAGUAR was developed by CLAAS engineers in 1993 and still sets the standard today. The direct power transmission has proven itself thousands of times over in practical use. For this generation of the JAGUAR we have again stayed true to our tradition with a transverse engine arrangement.

- The chopping mechanism is driven directly from the engine main clutch via a pre-tensioned powerband – entirely maintenance-free
- The disc brake attached to the main clutch ensures that the chopping mechanism stops rapidly when the main drive is switched off – thereby enhancing safety
- The direct drive guarantees highly efficient power transmission while also keeping the specific power requirement low – high efficiency
- The front attachment is driven mechanically, the connection is provided by a quick coupling – extremely convenient



Unmatched and unchanged.
The drive.



Proven JAGUAR technology,
enhanced yet again.
The chopping system.





- Proven, straight-line crop flow
- Operational reliability in all crops and under all operating conditions
- Excellent chopping quality

Chopping system

Straight and fast. The crop flow.



Maximum throughput with low power consumption.

An optimal crop flow is a major factor in determining the daily output. The crop flows in a straight line through the entire machine without any awkward angles. It makes no difference whether you are harvesting grass without the Corncracker or are working in silage corn with the Corncracker. The crop is accelerated further at each step and is centered increasingly by the chevron arrangement of the knives and accelerator paddles. This results in maximum performance with minimum power consumption and ensures highly reliable operation. The JAGUAR demonstrates this time after time: with outstanding results – measured in terms of fuel consumption in liters per ton.



1 Intake

- Robust with perfect precompression

2 V-CLASSIC knife drum

- Precise cutting for excellent chop quality
- Central delivery of chopped material for low wear

3 Corncracker

- Optimal crop processing

4 Accelerator

- Central delivery of chopped material for reliable crop transport
- Mechanically adjustable clearance