

LG933 轮式装载机 零部件图册

LG933 WHEEL LOADER PARTS CATALOG

山东临工工程机械有限公司
SHANDONG LINGONG CONSTRUCTION MACHINERY CO., LTD

LG933 轮式装载机 零部件图册
LG933 WHEEL LOADER PARTS CATALOG

2007年12月 第3版 第1次印刷

2007-12 Version 3 Printed 1

山 东 临 工 工 程 机 械 有 限 公 司
SHANDONG LINGONG CONSTRUCTION MACHINERY CO., LTD

地址：中国·临沂经济开发区临工工业园

Add: Lingong Industry Park, Linyi Economic Development Zone, Shandong, china

电话：86-0539-8785800

Tel: 86-0539-8785800

传真：86-0539-8785671

Fax: 86-0539-8785671

技术服务：800-8607999

Web: www.sdlg.cn

前言

LG933 轮式装载机零部件图册，是为了方便用户使用、维修和保养而绘制的，供其在使用过程中查阅及参考，也可帮助用户了解本机的结构和装配关系。发动机的零部件详见其使用说明书，本书不再绘出。

本图册按系统划分绘制出了各零部件的图形及相互装配关系。凡装机后不可拆卸的部件（如焊接件、铆合件），一般只标出部件代号，不另列其组成零件。本图册明细表采用中英文对照编排。

本图册主要根据标准型产品（订货号 3301214A2908）编绘说明，其它非标准配置，可参照执行，详情请咨询山东临工、当地经销商或登录临工网站查询。随着科技的进步，产品将会不断改进，故本图册的内容可能会有部分与以后的产品不一致，恕不另行通知，因此，敬请用户在订购配件时，指明所购整车的出厂日期和编号。

编者

2007 年 12 月

FOREWORD

THIS PART LIST OF LG933 WHEEL LOADER IS MADE FOR THE CONVENIENCE OF USERS TO USE , REPAIR AND MAINTAIN THE MACHINE, AND IT CAN BE REFERED IN THE PROCESS OF USING. IT CAN ALSO HELP THE USERS TO BE FAMILIAR WITH THE CONSTRUCTION AND ASSEMBLY RELATION OF THE MACHINE. THE PART OF THE ENGINE IS SHOWED IN DETAIL IN ITS STRUCTION BOOK. SO THIS BOOK DOES NOT CONTAIN THE ENGING PART LIST.

THE PART LIST CONTAINS THE PART DRAWINGS OF DEFERENT ASSEMBLIES, SHOWING THE SHAPE OF THE PARTS AS WELL AS THE ASSEMBLING RELATION. THE COMPONENTS WHICH CAN NOT BE TAKEN APART (SUCH AS THE WELDMENT OR RIVETED ASSEMBLIES) ARE INDICATEED ONLY BY THEIR COMPONET NUMBERS WITHOUT THE CONSISTING PART NUM-BERS . THE LIST IN THE CATALOG IS ARRANGED BY CHINESE VERSUS ENGLISH.

THIS CATALOG IS MAINLY BASED ON THE STANDARD PRODUCT (ORDER NUMBER 3301214A2908) THE OTHERS OF NONSTANDARD PRODUCT CAN REFER THE STANDARD PRODUCT, AND THE DETAILED INFORMATION CAN BE KNOWN FROM SHANDONG LINGONG, THE LOACAL DEALER OR LINGONG WEBSITE ALTERATIONS IN DESIGN ARE NECESSARILY WITH THE THECHNICAL DEVELOPMENT SO SOME CONTENT IN THE CATALOG PROBABLY IS NOT CONSISTANT WITH THE FUTURE PRODUCTS, AND THIS WILL NOT NOTICE USERS. THEREFORE WHEN ORDERING SPARE PARTS, USERS ARE KINGLY REQUSETED TO INFORM US THE MANUFACTURING DATE AND BATCH NUMBER OF THE WHEEL LOADER.

THE COMPILER

2007. 12

A. 发动机系统

A. DIESEL ENGINE SYSTEM

发动机系统	A1
DIESEL ENGINE SYSTEM	A1
油门操纵机构	A2
GOVERNOR CONTROL SYSTEM	A2
停车操纵机构	A3
PARKING CONTROL SYSTEM	A3

B. 变矩器系统

B. TORQUE CONVERTER SYSTEM

变矩器系统	B1
TORQUE CONVERTER SYSTEM	B1
液力变矩器 (371804)	B2
HYORQUE CONVERTER SYSTEM	B2
液力变矩器 (371804)	B2
HYORQUE CONVERTER SYSTEM	B2

C. 变速箱系统

C. TRANSMISSION SYSTEM

变速箱总成	C1
TRANSMISSION ASSEMBLY	C1
变速箱总成	C1
TRANSMISSION ASSEMBLY	C1
输入轴总成	C2
INPUT SHAFT ASSEMBLY	C2
中间轴总成	C3
INTER-SHAFT	C3
前输出轴	C4
FORE-OUTLET SHAFT	C4
后输出轴总成	C5
REAR-OUTPUT SHAFT	C5
倒档轴总成	C6
REVERSE SHAFT ASSEMBLY	C6
拨叉机构	C7
FORK SYSTEM	C7
高低速换档拨叉机构	C8
HIGH-LOW SPEED FORK SYSTEM	C8

D. 变速操纵系统

D. TRANSMISSION CONTROL SYSTEM

变速操纵机构	D1
TRANSMISSION CONTROL SYSTEM	D1
高低速操纵机构	D2
HIGH-LOW SPEED CONTROL SYSTEM	D2

E. 驱动桥系统

E. AXLE SYSTEM

驱动桥系统	E1
AXLE ASSEMBLY	E1
轮边减速器总成	E2
FINAL DRIVE ASSEMBLY	E2
主传动总成	E3
AXLE ASSEMBLY	E3

目录 CONTENTS

轮边减速器总成	E4
FINAL DRIVE ASSEMBLY	E4
F. 工作装置液压系统	
F. IMPLEMENT HYDRAULIC SYSTEM	
液压操纵总成	F1
HYDRAULIC CONTROL ASSEMBLY	F1
举升缸总成	F2
LIFTING CYLINDER ASSEMBLY	F2
转斗缸总成	F3
DUMP CYLINDER ASSEMBLY	F3
转斗油缸(371401)	F4
DUMP CYLINDER	F4
转斗油缸(371368)	F5
DUMP CYLINDER	F5
动臂油缸(371401)	F6
LIFT ARM CYLINDER	F6
动臂油缸(371368)	F7
LIFT ARM CYLINDER	F7
多路阀(331001)	F8
CONTROL VALVE	F8
G. 油箱	
G. TANK	
燃油箱总成	G1
FUEL TANK ASSEMBLY	G1
液压油箱总成	G2
HYDRAULIC TANK ASSEMBLY	G2
H. 工作装置	
H. WORKING EQUIPMENT	
工作装置	H1
WORKING EQUIPMENT	H1
I. 转向系统	
I. STEERING SYSTEM	
转向系统	I1
STEERING SYSTEM	I1
转向油缸	I2
STEERING CYLINDER	I2
优先阀	I3
PRIORITY VALVE	I3
J. 制动系统	
J. BRAKE SYSTEM	
行车制动系统	J1
SERVICE BRAKE SYSTEM	J1
储气罐	J2
AIR RESERVOIR	J2
加力泵总成	J3
BRAKE BOOSTER	J3
驻车制动系统	J4
PARKING BRAKE SYSTEM	J4
盘式制动器	J5
DISC BRAKE	J5

目录 CONTENTS

气制动阀	J6
BRAKE VALVE	J6
K. 车架	
K. FRAME	
前车架总成	K1
FRONT FRAME	K1
后车架总成	K2
REAR FRAME	K2
配重铁总成	K3
COUNTER WEIGHT	K3
L. 驾驶室	
L. CAB GROUP	
驾驶室总成	L1
CAB GROUP	L1
仪表盘支架	L2
BRACKET OF METER PANEL	L2
操作台架	L3
BENCH GROUP	L3
M. 覆盖件系统	
M. COVER SYSTEM	
发动机罩总成	M1
HOOD OF DIESEL ENGINE ASSEMBLY	M1
左台架总成	M2
LEFT BENCH GROUP	M2
右台架总成	M3
RIGHT BENCH GROUP	M3
电瓶箱总成	M4
BATTERY CASE ASSEMBLY	M4
N. 空调系统	
N. AIR CONDITIONER SYSTEM	
空调系统	N1
AIR CONDITIONER SYSTEM	N1
暖风机	N2
WARMING MACHINE	N2
O. 电气系统	
O. ELECTRIC SYSTEM	
电气系统	O1
ELECTRIC SYSTEM	O1
双音电喇叭总成	O2
ELECTRIC HORN	O2

A 发动机系统

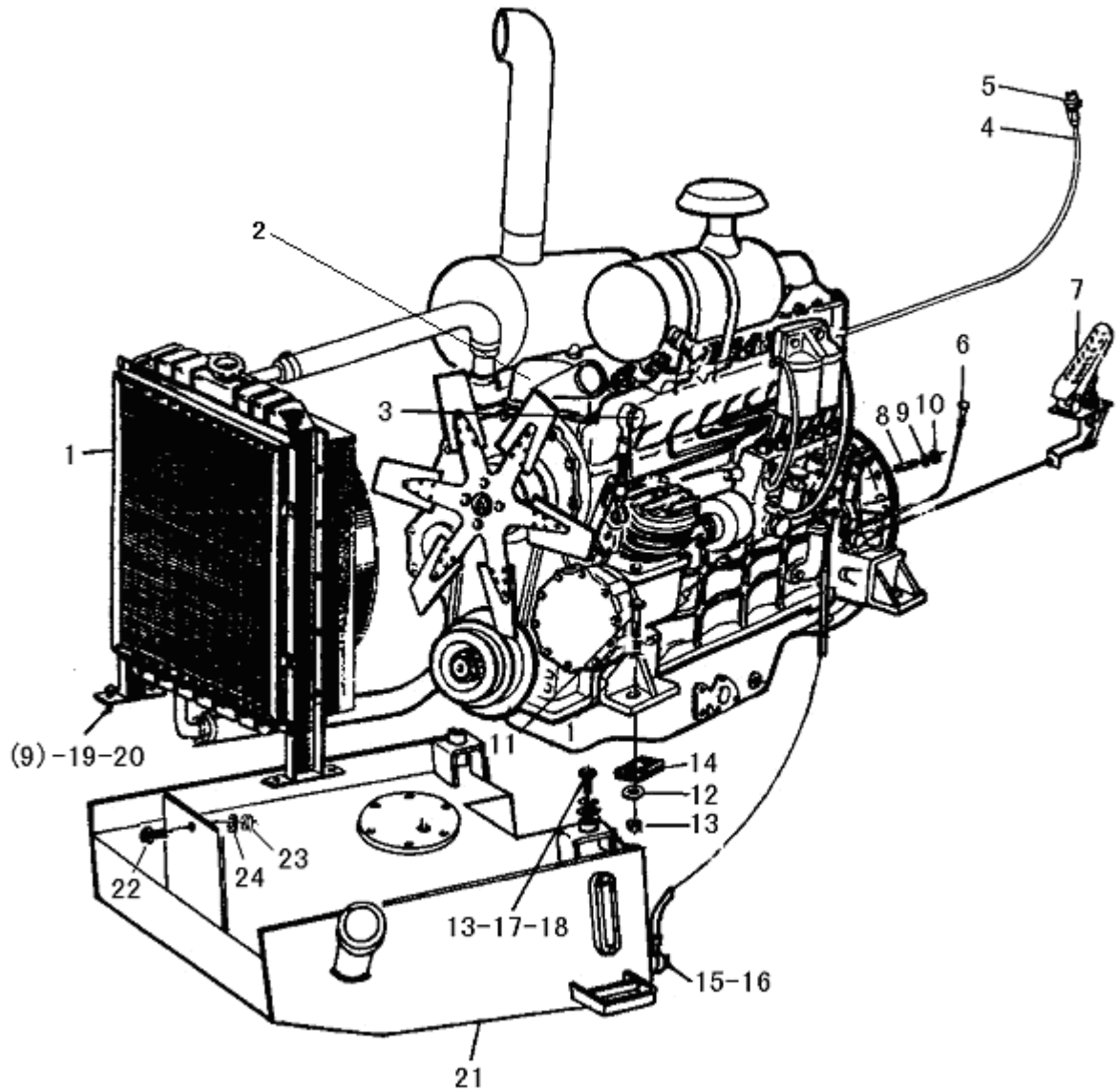
DIESEL ENGINE SYSTEM

山东临工工程机械有限公司
SHANDONG LINGONG CONSTRUCTION MACHINERY CO., LTD

A1

发动机系统

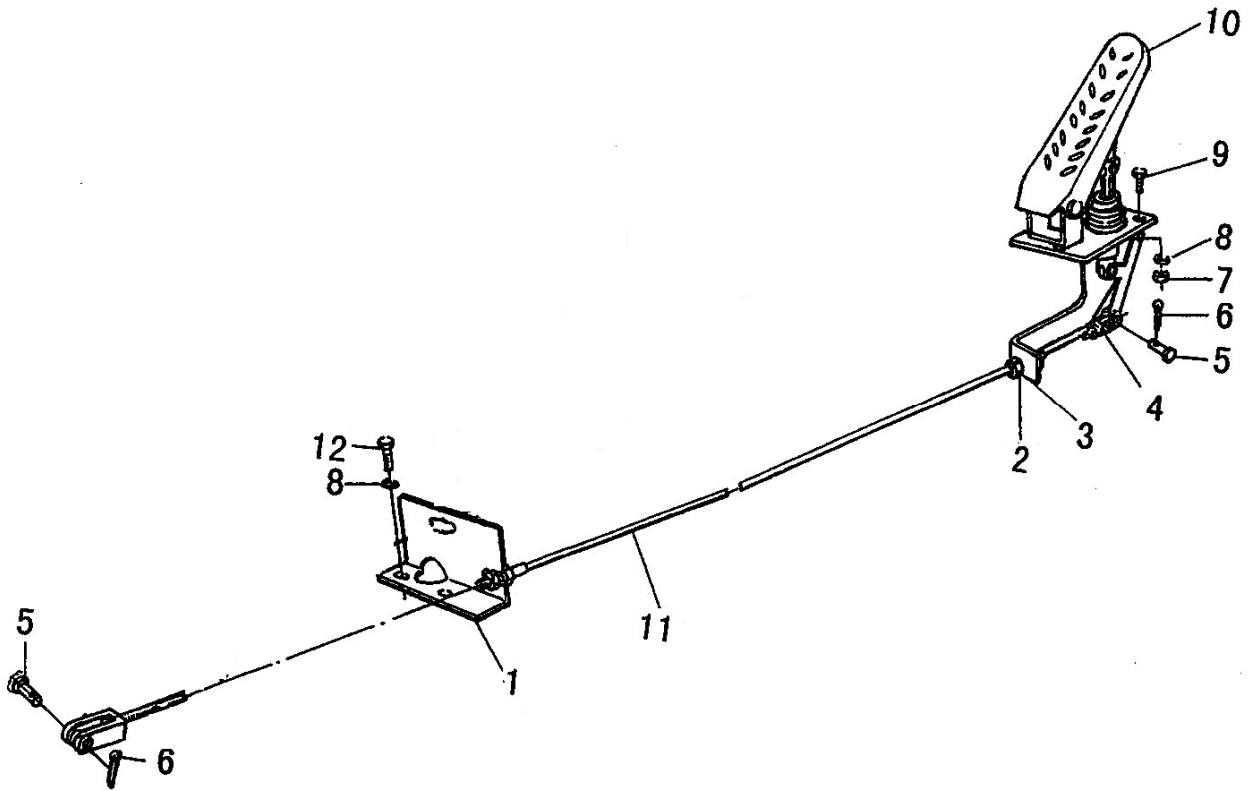
DIESEL ENGINE SYSTEM



A1

序号	代号	名称		数量	备注
KEY	PART NO.	DESCRIPTION		QTY	REMARKS
1	4120000353	散热器总成 LY-930	RADIATOR ASS'Y LY-930	1	部件
2	4110000066	发动机总成 YC6108G (B7641)	DISEL ENGINE ASS'Y YC6108G (B7641)	1	部件
3	3010900168	水(油)温表接头	THEMOMETER JOINT	1	35
4	2010900119	油压表管	PRESS HOSE	1	部件
5	3010900167	接头	CONNECTOR	1	35
6	2010900118	停车操纵机构	PARKING CONTROL SYSTEM	1	部件
7	2010900122	油门操纵机构	GOVERNOR CONTROL SYSTEM	1	部件
8	3010900189	双头螺栓	DOUBLE SCREW BOLT	8	45
9	4015000026	垫圈 GB93-12-65Mn	WASHER GB93-12-65Mn	28	
10	4013000011	螺母 GB6170-M12EpZn-8	NUT GB6170-M12EpZn-8	8	
11	4011000567	螺栓 GB5785-M24*2*80EpZn-8.8	BOLT GB5785-M24*2*80EpZn-8.8	4	
12	4015000167	垫圈 GB97.1-24EpZn-300HV	WASHER GB97.1-24EpZn-300HV	6	
13	4013000157	螺母 GB889.2-M24*2EpZn-8	NUT GB889.2-M24*2EpZn-8	4	
14	3010900004	橡胶垫	RUBBER SPACER	4	丁晴橡胶 40
15	3010900003	接头螺钉	BOLT	2	Q235-A
16	3010900007	垫圈	WASHER	4	T2
17	4011000117	螺栓 GB5785-M24*2*150EpZn-8.8	BOLT GB5785-M24*2*150EpZn-8.8	2	
18	4015000031	垫圈 GB93-24-65Mn	WASHER GB93-24-65Mn	2	
19	4011000092	螺栓 GB5783-M12*50EpZn-8.8	BOLT GB5783-M12*50EpZn-8.8	4	
20	4015000168	垫圈 GB97.1-12EpZn-300HV	WASHER GB97.1-12EpZn-300HV	20	
21	2010900008	燃油箱总成	FUEL TANK	1	部件
22	4011000114	螺栓 GB5785-M20*2*60EpZn-8.8	BOLT GB5785-M20*2*60EpZn-8.8	1	
23	4013000040	螺母 GB6171-M20*2EpZn-8	NUT GB6171-M20*2EpZn-8	1	
24	4015000176	垫圈 GB97.1-20EpZn-300HV	WASHER GB97.1-20EpZn-300HV	1	

油门操纵机构
GOVERNOR CONTROL SYSTEM

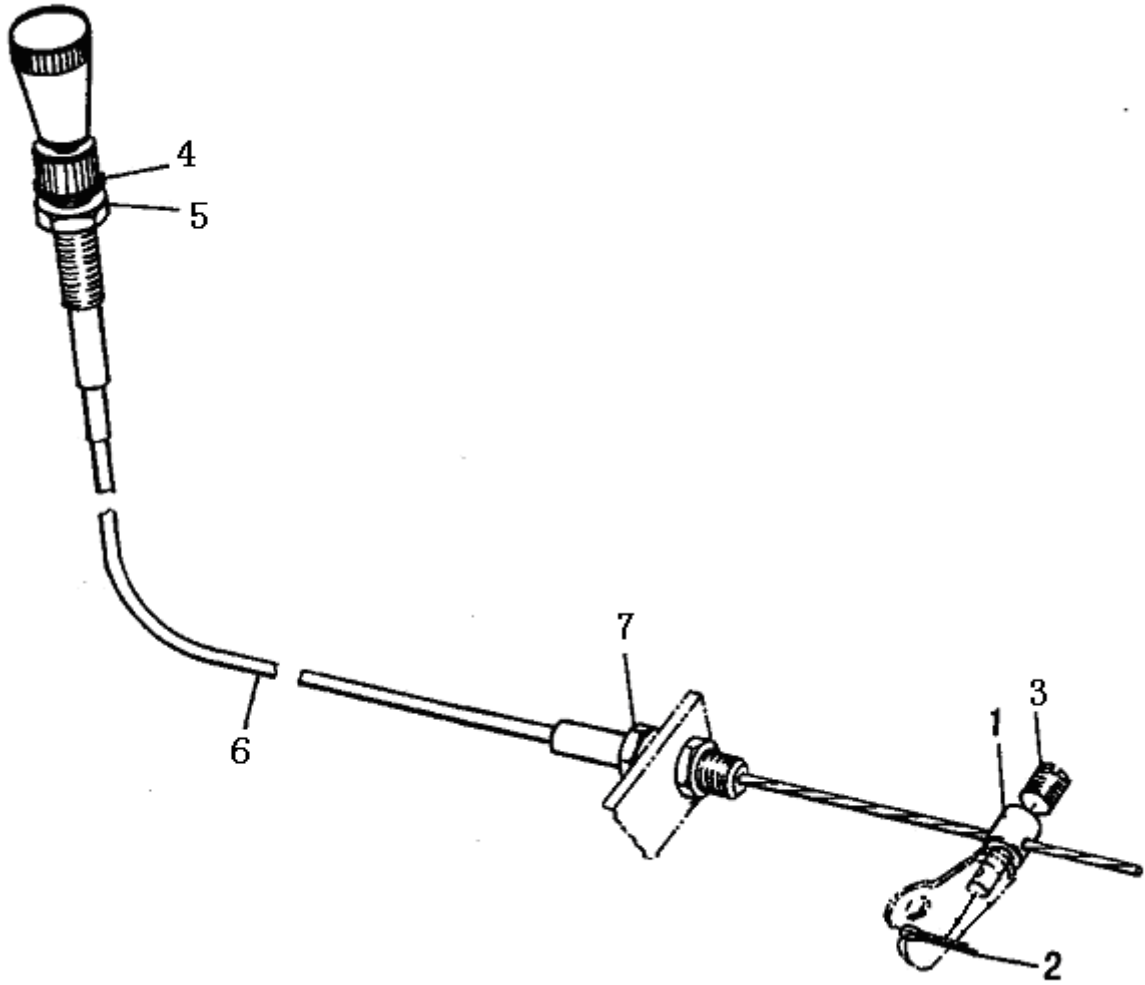


A2

序号	代号	名称		数量	备注
KEY	PART NO.	DESCRIPTION		QTY	REMARKS
1	3010900008	固定板	MOUNTING PLATE	1	Q235-A
2	4013000046	螺母 GB6172. 1-M12EpZn-05	NUT GB6172. 1-M12EpZn-05	4	
3	4015000168	垫圈 GB97. 1-12EpZn-300HV	WASHER GB97. 1-12EpZn-300HV	4	
4	3010900009	连接叉	CONNECT FORK	1	Q235-A
5	4016000138	销轴 GB882-B6*22EpZn-35	PIN SHAFT GB882-B6*22EpZn-35	2	
6	4016000114	销 GB91-2*16EpZn-Q235A	PIN GB91-2*16EpZn-Q235A	2	
7	4013000028	螺母 GB6170-M6EpZn-8	NUT GB6170-M6EpZn-8	3	
8	4015000035	垫圈 GB93-6-65Mn	WASHER GB93-6-65Mn	6	
9	4011000101	螺栓 GB5783-M6*20EpZn-8. 8	BOLT GB5783-M6*20EpZn-8. 8	3	
10	4120000096	油门踏板 ZY75-00	ACCELERATOR PEDAL ZY75-00	1	部件
11	2010900170	操纵软轴	CABLE SHAFT	1	部件
12	4011000440	螺栓 GB5783-M6*40EpZn-8. 8	BOLT GB5783-M6*40EpZn-8. 8	2	

停车操纵机构

PARKING CONTROL SYSTEM



A3

序号	代号	名称		数量	备注
KEY	PART NO.	DESCRIPTION		QTY	REMARKS
1	3010900054	螺栓轴	BOLT SHAFT	1	35
2	4016000120	开口销 GB91-2*12EpZn-Q235A	SPLINT PIN GB91-2*12EpZn-Q235A	1	
3	4014000020	螺钉 GB75-M6*10EpZn-22H	BOLT GB75-M6*10EpZn-22H	1	
4	4015000162	垫圈 GB97. 1-10EpZn-300HV	WASHER GB97. 1-10EpZn-300HV	1	
5	4013000007	螺母 GB6170-M10EpZn-8	NUT GB6170-M10EpZn-8	1	
6	2010900120	操纵软轴	CABLE SHAFT	1	
7	4013000028	螺母 GB6170-M6EpZn-8	NUT GB6170-M6EpZn-8	2	部件

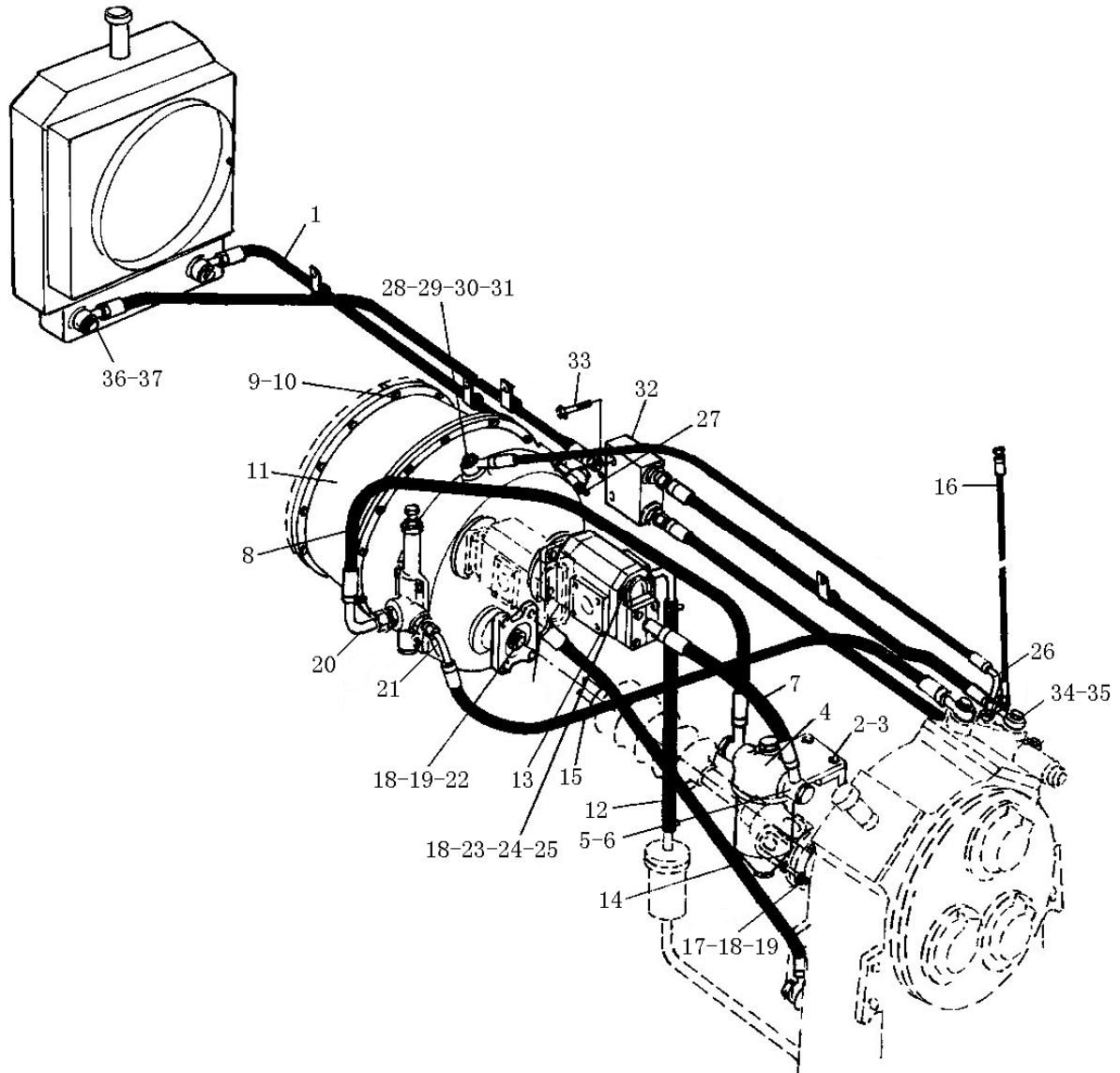
B 变矩器系统
TORQUE CONVERTER SYSTEM

山东临工工程机械有限公司
SHANDONG LINGONG CONSTRUCTION MACHINERY CO., LTD

B1

变矩器系统

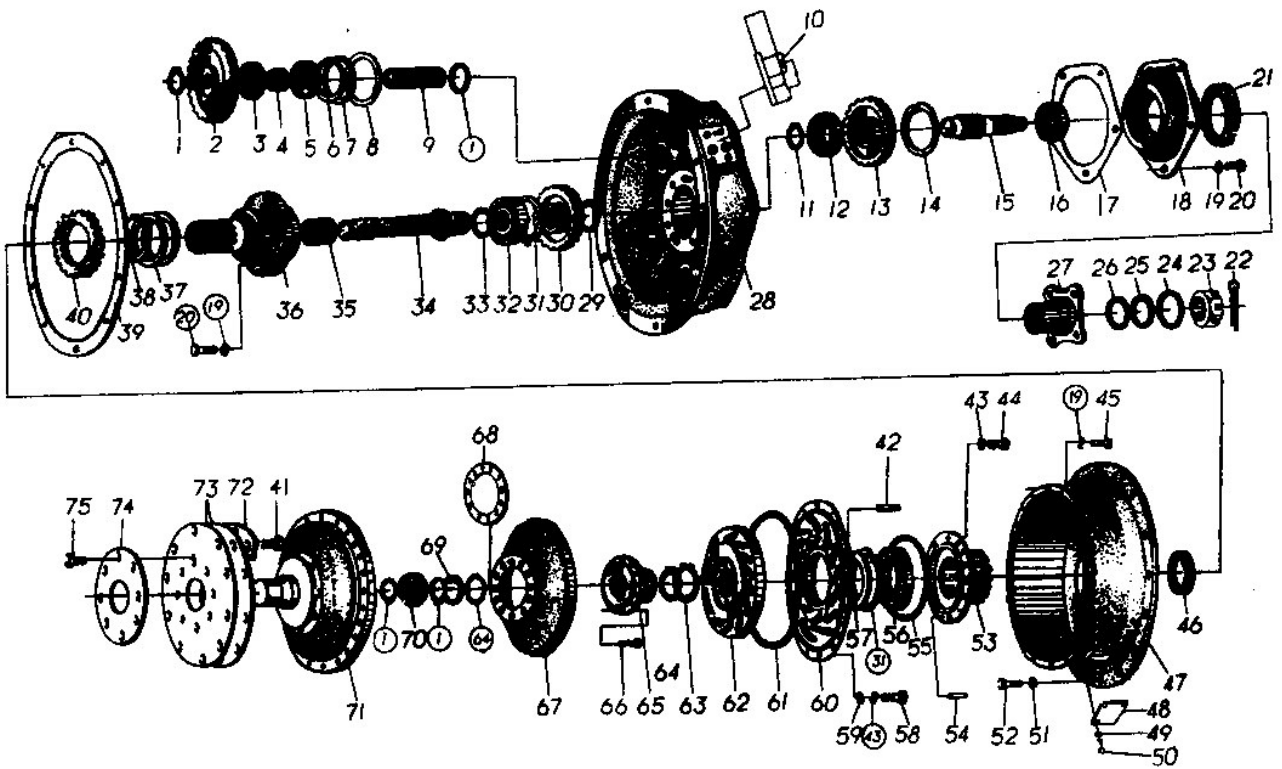
TORQUE CONVERTER SYSTEM



B1

序号	代号	名称		数量	备注
KEY	PART NO.	DESCRIPTION		QTY	REMARKS
1	2020900057	变矩器至散热器油管	TO RADIATOR PIPE	1	部件
2	4011000107	螺栓 GB5783-M8*30EpZn-8.8	BOLT GB5783-M8*30EpZn-8.8	4	
3	4015000036	垫圈 GB93-8-65Mn	WASHER GB93-8-65Mn	4	
4	4110000357	滤清器 QF60M33G	OIL FILTER QF60M33G	1	部件
5	4120000125	接头体 GB3733.2-G28EpZn-35	CONNECTOR GB3733.2-G28EpZn-35	2	35
6	4030000013	O形圈 GB1235-32*3.1	O-RING GB1235-32*3.1	2	
7	2020900044	变速泵至滤清器油管总成	TO OIL FILTER PIPE	1	部件
8	29040007871	滤清器至变速箱油管	TO TRANSMISSION PIPR	1	部件
9	4015000025	垫圈 GB93-10-65Mn	WASHER GB93-10-65Mn	12	
10	4011000085	螺栓 GB5783-M10*35EpZn-8.8	BOLT GB5783-M10*35EpZn-8.8	12	
11	4110000084	液力变矩器 YJ315LG-1	HYDRAULIC TORQUE CONVERTER YJ315LG-1	1	部件
12	2020900060	变速泵吸油管总成	INTAKE OIL TUBE TO PUMP	1	部件
13	4110000044	变速泵 CBGjA2032	SHIFT PUMP CBGjA2032	1	部件
14	2020900046	溢流阀回油管总成	OIL RETURN PIPE ASSEMBLY	1	部件
15	2020900053	变矩器至变速阀油管	TO SHAFT VALVE PIPE	1	部件
16	2020900054	变速压力油管总成	SHIFT PRESS VITTA	1	部件
17	4011000125	螺栓 GB5786-M12*1.25*35EpZn-8.8	BOLT GB5786-M12*1.25*35EpZn-8.8	4	
18	4015000026	垫圈 GB93-12-65Mn	WASHER GB93-12-65Mn	12	
19	4013000126	螺母 GB889.2-M12*1.25EpZn-8	NUT GB889.2-M12*1.25EpZn-8	8	
20	3020900020	接头体	CONNECTOR	1	35
21	3020900035	油压接头	PIPE JIONT	1	35
22	2020900051	主传动轴	MAIN DRIVE SHAFT	1	部件
23	29110000041	密封垫	SEAL WASHER	1	
24	4012000003	螺柱 GB898-M12*35EpZn-8.8	BOLT GB898-M12*35EpZn-8.8	4	
25	4013000011	螺母 GB6170-M12EpZn-8	NUT GB6170-M12EpZn-8	4	
26	3020900031	接头	CONNECTOR	1	35
27	3020900034	变矩器油温传感器接头	THEMOMENTER JOINT	1	35
28	3020900033	接头	CONNECTOR	1	35
29	2020900052	回油管	OIL RETURN PIPE	1	部件
30	4011000240	螺栓 JB999-M14*1.5*35EpZn-35	BOLT JB999-M14*1.5*35EpZn-35	1	35
31	4030000057	垫圈 JB1002-14-T2	WASHER JB1002-14-T2	2	T2
32	2020900059	三通块总成	TEE BLOCK P	1	部件
33	4011000230	螺栓 GB16674-M10*65EpZn-8.8	BOLT GB16674-M10*65EpZn-8.8	2	
34	4030000060	垫圈 JB1002-22-T2	WASHER JB1002-22-T2	6	T2
35	4011000382	螺栓 JB999-M22*1.5*50EpZn-35	BOLT JB999-M22*1.5*50EpZn-35	3	35
36	4015000203	垫圈 JB1002-24-T2	WASHER JB1002-24-T2	6	T2
37	4011000399	螺栓 JB999-M24*1.5*50EpZn-35	BOLT JB999-M24*1.5*50EpZn-35	3	35

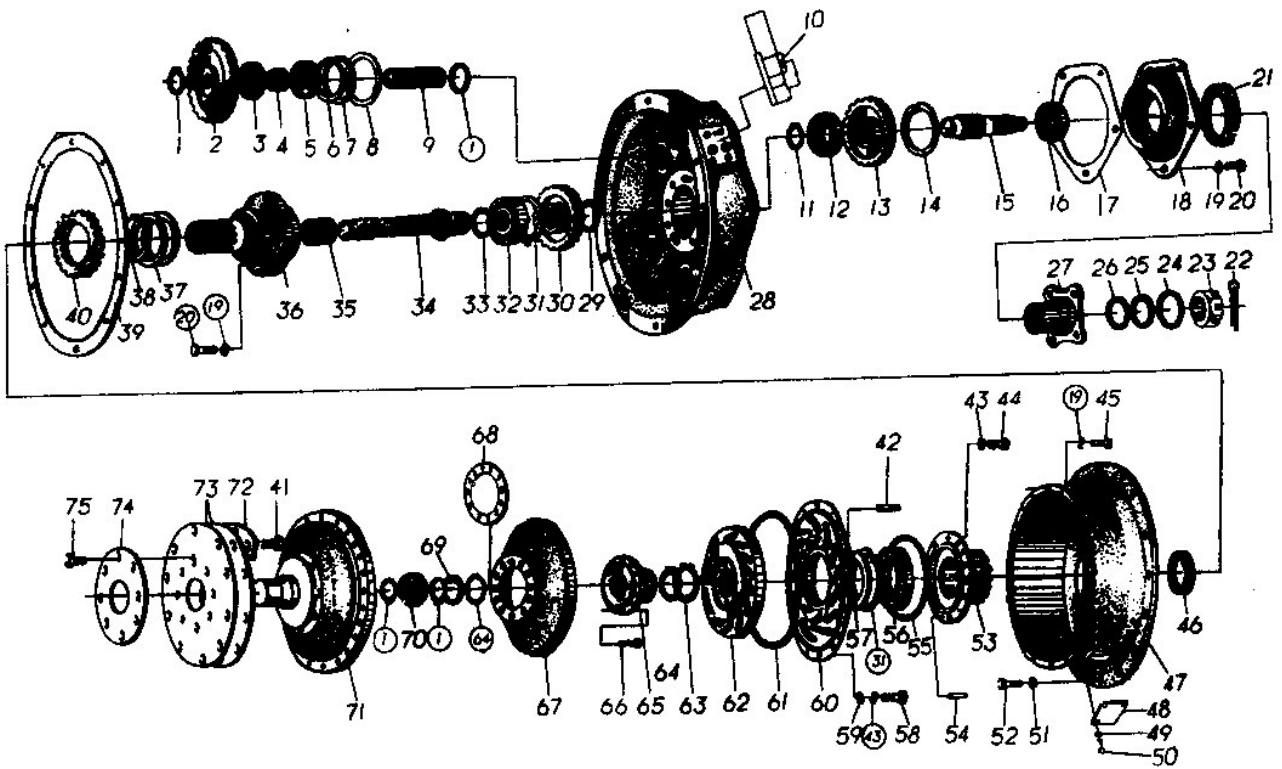
液力变矩器 (371804) HYDRAULIC TORQUE CONVERTER



B2

序号	代号	名称		数量	备注
KEY	PART NO.	DESCRIPTION		QTY	REMARKS
1	4110000084013	挡圈 30	SNAP RING 30	6	
2	4110000084012	驱动油泵被动齿轮	DRIVEN GEAR ON DRIVE PUMP	3	
3	4110000084014	轴承 206	BEARING 206	3	
4	4110000084015	套	SLEAVE	3	
5	4110000084016	轴承 50206	BEARING 50206	3	
6	4110000084017	止动环	LOCKING	3	
7	4110000084018	垫圈	SPACER	3	
8	4110000084019	挡圈 68	SNAP RING 68	3	
9	4110000084020	驱动油泵轴	DRIVE PUMP SHAFT	3	
10	4110000084021	减压阀总成	RELIEF VALVE	1	
11	4110000084022	挡圈 35	SNAP RING 35	1	
12	4110000084023	轴承 307	BEARING 307	1	
13	4110000084024	被动齿轮	DRIVEN GEAR	1	
14	4110000084025	挡圈 90	SNAP RING 90	1	
15	4110000084026	输出轴	OUTPUT SHAFT	1	
16	4110000084027	轴承 308	BEARING 308	1	
17	4110000084028	密封垫	SEAL SPACER	1	
18	4110000084029	密封发兰	SEAL FLANGER	1	
19	4110000084030	垫圈 12	SPACER 12	19	
20	4110000084031	螺栓 M12*35	BOLT M12*35	11	
21	4110000084032	油封 55*82*26	OIL SEAL 55*82*26	1	
22	4110000084033	销 5*45	PIN 5*45	1	
23	4110000084034	六角槽型螺母 M24*1.5	NUT M24*1.5	1	
24	4110000084035	密封垫	SEAL SPACER	1	
25	4110000084036	密封垫	SEAL SPACER	1	
26	4110000084037	垫圈	WASHER	1	
27	4110000084038	输出连接发兰	FLANGE ON OUTPUT SHAFT	1	
28	4110000084039	变矩器壳体	CASE	1	
29	4110000084040	挡圈 48	SNAP RING 48	1	
30	4110000084041	主动齿轮	DRIVEN GEAR	1	
31	4110000084042	挡圈	SNAP RING	2	
32	4110000084043	轴承 310	BEARING 310	1	
33	4110000084044	密封圈	SEAL RING	1	
34	4110000084045	主动轴	DRIVEN SHAFT	1	
35	4110000084046	套	SLEAVE	1	
36	4110000084047	导轮座	STATOR BOSS	1	
37	4110000084048	密封环	SEAL RING	2	
38	4110000084049	挡圈	SNAP RING	1	
39	4110000084050	垫圈	SPACER	1	
40	4110000084011	驱动油泵主动齿轮	DRIVEN GEAR ON DRIVE PUMP	1	
41	4110000084051	螺栓 M12*35	BOLT M12*35	12	
42	4110000084052	销 A6*20	PIN A6*20	1	
43	4110000084053	垫圈 8	SPACER 8	32	
44	4110000084054	螺栓 M8*25	BOLT M8*25	8	
45	4110000084055	螺栓 M12*35	BOLT M12*35	8	

液力变矩器 (371804) HYDRAULIC TORQUE CONVERTER

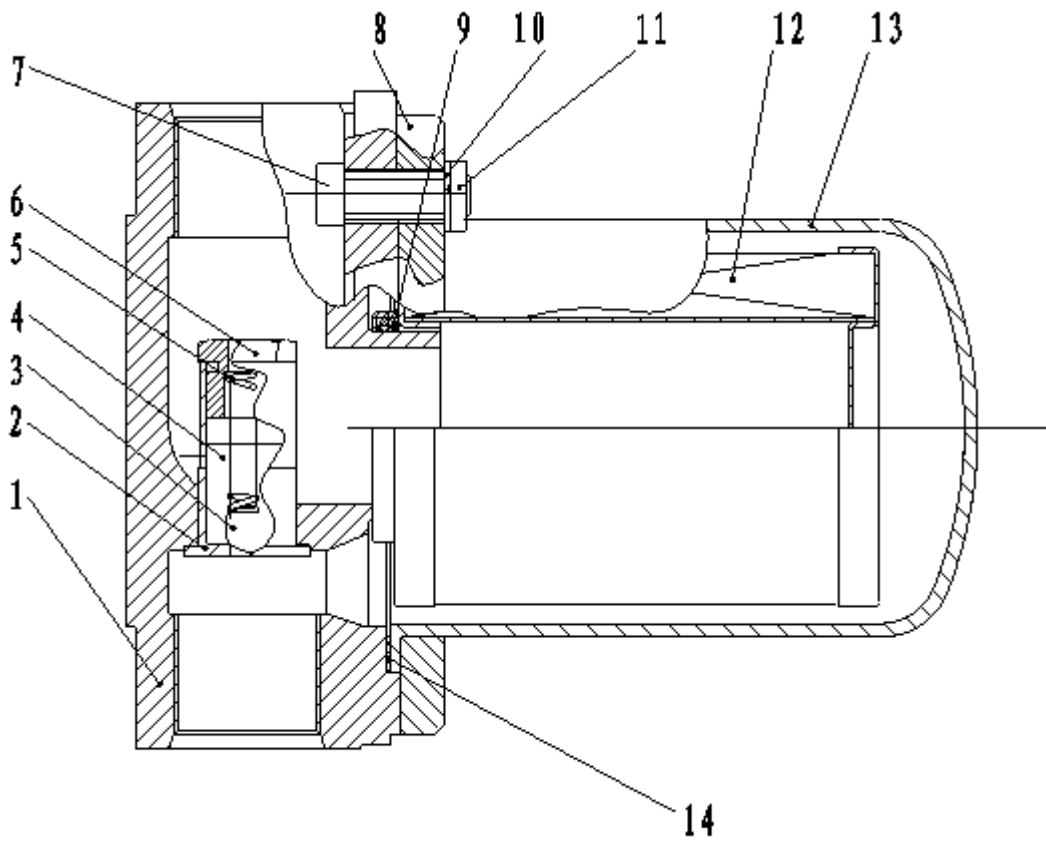


B2

序号	代号	名称		数量	备注
KEY	PART NO.	DESCRIPTION		QTY	REMARKS
46	4110000084056	油封 100*120*13	OIL SEAL 100*120*13	1	
47	4110000084057	飞轮壳中节	MID-SEGMENT FOR FLY WHEEL CASE	1	
48	4110000084058	观察盖	SIGHT COVER	1	
49	4110000084059	垫圈 6	SPACER 6	8	
50	4110000084060	螺栓 M6*16	BOLT M6*16	8	
51	4110000084061	垫圈 10	SPACER 10	36	
52	4110000084062	螺栓 M10*30	BOLT M10*30	16	
53	4110000084063	泵轮座	IMPELLER BOSS	1	
54	4110000084064	定位销	SET PIN	4	
55	4110000084065	O 形圈 128*3.55	O-RING 128*3.55	1	
56	4110000084066	轴承 212	BEARING 212	1	
57	4110000084067	隔环	ISOLATING RING	1	
58	4110000084068	螺栓 M8*30	BOLT M8*30	24	
59	4110000084069	螺母 M8	NUT M8	24	
60	4110000084070	泵轮	IMPELLER	1	
61	4110000084071	O 形圈 335*3.56	O-RING 335*3.56	1	
62	4110000084072	导轮	STATOR	1	
63	4110000084073	挡圈 60	SNAP RING 60	1	
64	4110000084074	挡圈 38	SNAP RING 38	2	
65	4110000084075	涡轮座	TURBINE BOSS	1	
66	4110000084076	铆钉 8*30	RIVET 8*30	12	
67	4110000084077	涡轮	TURBINE	1	
68	4110000084078	垫板	SPACING PLATE	1	
69	4110000084079	挡圈 55	SNAP RING 55	1	
70	4110000084080	滚针轴承	NEEDLE ROLLER BEARING	1	
71	4110000084081	连接轮	COUPLING WHEEL	1	
72	4110000084082	双联垫片	DOUBLE SPACER	6	
73	4110000084083	弹性板	ELASTIC PLATE	2	
74	4110000084084	垫板	SPACING PLATE	1	
75	4110000084085	螺栓 M10*20	BOLT M10*20	8	

B3

滤清器 OIL FILTER



B3

序号	代号	名称		数量	备注
KEY	PART NO.	DESCRIPTION		QTY	REMARKS
1	4110000357	传动油滤清器 QF60M33G	OIL FILTER	1	
2	4110000357001	底座	FOUNDATION	1	
3	4110000357002	阀体	VALVE BODY	1	
4	4110000357003	钢球 Ø10	STEEL BALL	1	
5	4110000357004	限压阀	VALVE	1	
6	4110000357005	弹簧	SPRING	1	
7	4110000357006	螺塞	PLUG	1	
8	4110000357007	圆柱头内六方螺钉 M8×40	SCREW	6	
9	4110000357008	法兰盘	FLANGE	1	
10	4110000357009	密封圈	PRESSURIZE RING	1	
11	4110000357010	弹簧垫片	LOCK WASHER	6	
12	4110000357011	螺母	NUT	6	
13	4110000357012	滤芯	STRAIN CORE	1	
14	4110000357013	外罩	COVER	1	
15	4110000357014	密封圈	PRESSURIZE RING	1	

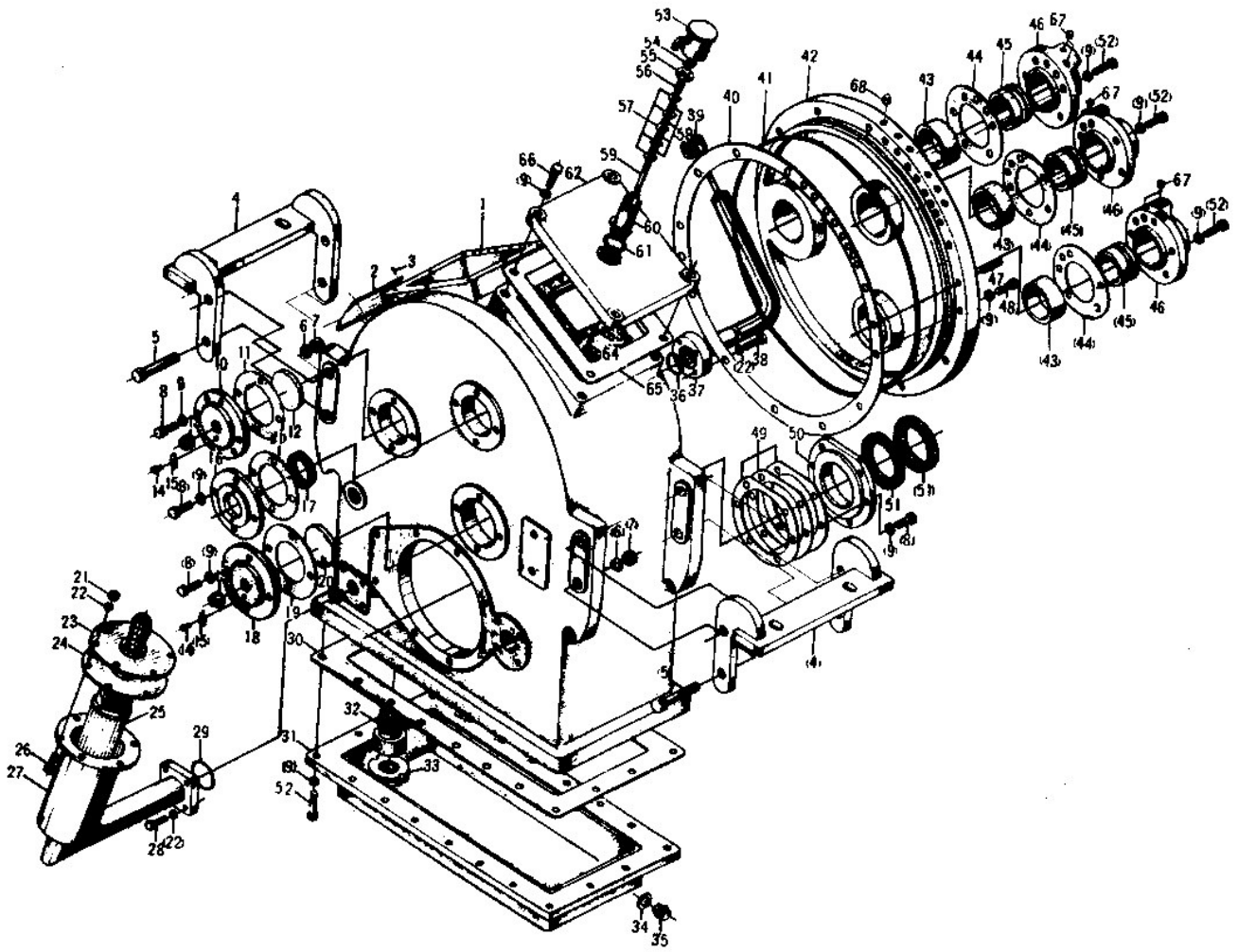
C 变速箱系统

TRANSMISSION SYSTEM

(仅供参考, 详见随机变速箱技术资料)

山东临工工程机械有限公司
SHANDONG LINGONG CONSTRUCTION MACHINERY CO., LTD

变速箱总成 TRANSMISSION SYSTEM



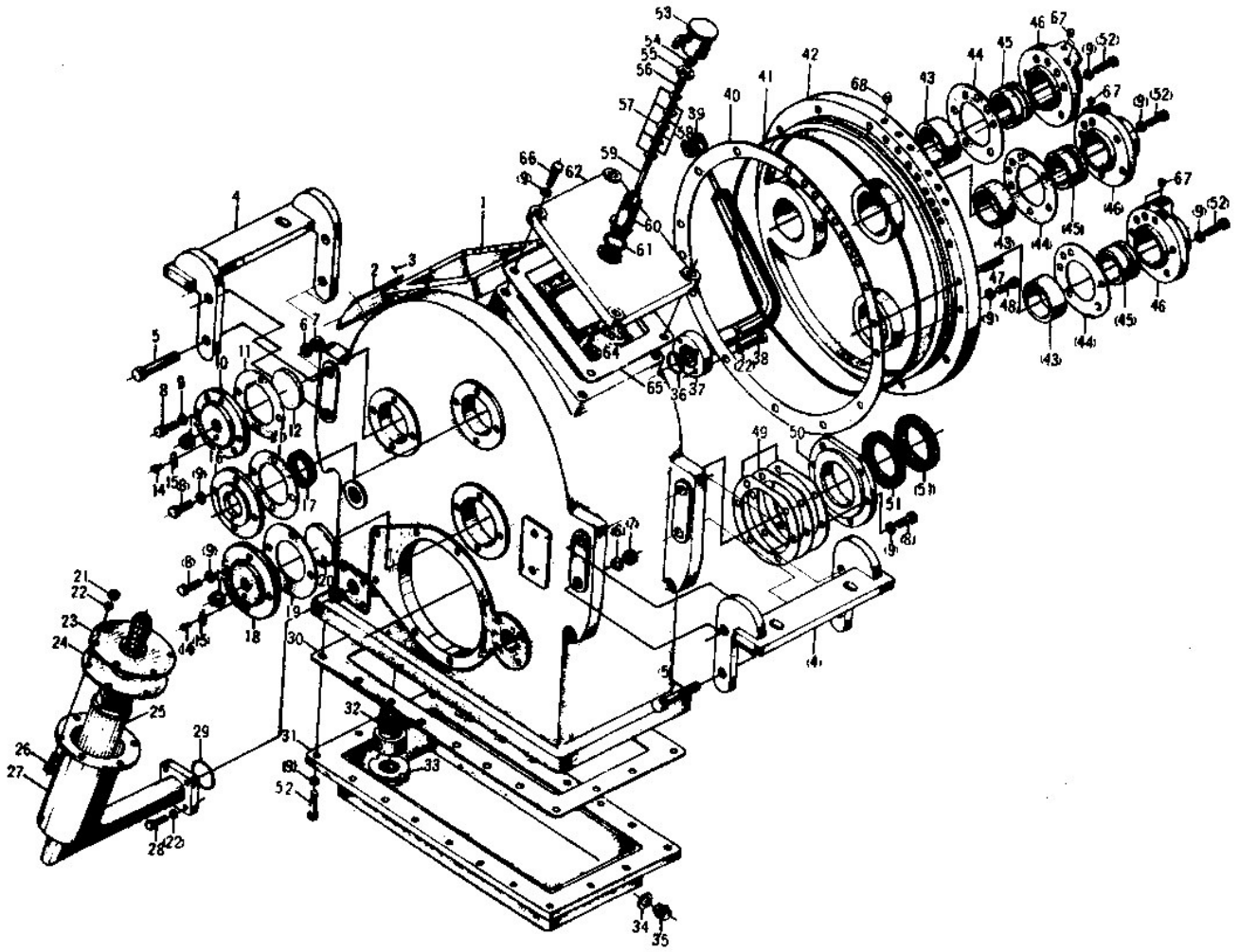
C1

序号	代号	名称		数量	备注
KEY	PART NO.	DESCRIPTION		QTY	REMARKS
1		箱体	TANK	1	
2		铭牌	NAME PLATE	1	
3		标牌铆钉 2*6	RIVET 2*6	4	
4		支架	FRAME	2	
5		六角螺栓 M16*75	HEXANGULAR BLOT M16*75	8	
6		弹簧垫圈 16	SPRING WASHER 16	8	
7		六角螺母 M16	HEXANGULAR NUT M16	8	
8		六角螺栓 M10*25	HEXANGULAR BLOT M10*25	18	
9		垫圈 10	WASHER 10	57	
10		端盖	COVER	1	
11		纸垫	PAPER SPACER	2	
12		调整环	ADJUST RING	1	
13		调整螺丝	ADJUST BREECH BLOCK	2	
14		六角头螺栓 M6*6	HEXANGULAR BLOT M6*6	2	
15		止动片	STOP PAD	2	
16		输入轴端盖	COVER	1	
17		油封 45*62*12	OIL SEALING 45*62*12	1	
18		中间轴端盖	COVER	1	
19		纸垫	PAPER SPACER	1	
20		挡油盖调整环	ADJUST RING	1	
21		螺母 M8	NUT M8	6	
22		垫圈 8	WASHER 8	14	
23		接头	CONNECTOR	1	
24		垫片	WASHER	1	
25		滤芯	FILTER ELEMENT	1	
26		螺栓 M8*25	BOLT M8*25	6	
27		发兰接头	CONNECTOR FLANGE	1	
28		六角螺栓 M8*30	HEXANGULAR BLOT M8*30	4	
29		O形圈 50*4	O-RING 50*4	1	
30		垫密片	PACKING	1	
31		油底壳	OIL SUMP HOUSING	1	
32		吸油管	INPUT PIPE	1	
33		永久磁铁	PERMANENT MAGNET	1	
34		垫圈	WASHER	1	
35		螺塞 M20*1.5	PLUG M20*1.5	1	
36		O形圈 40*3.1	O-RING 40*3.1	1	
37		油管头	CONNECTOR OF OIL PIPE	1	
38		六角螺栓 M8*25	HEXANGULAR BLOT M8*25	1	
39		油管盖	COVER	1	
40		大端盖纸垫	PAPER SPACER	1	
41		O形橡胶圈	O-RING OF LOOP	1	
42		大端盖	LARGE COVER	1	
43		轴套	SHAFT SLEEVE	3	
44		垫片	SPACER	3	
45		外封轴套	SEALING SHAFT SEELVE	3	
46		进油端盖	INPUT OIL COVER	3	
47		定位销 A10*40	ORIENTATION PIN A10*40	1	
48		六角螺钉 M10*30	HEXANGULAR BLOT M10*30	13	

C1

变速箱总成

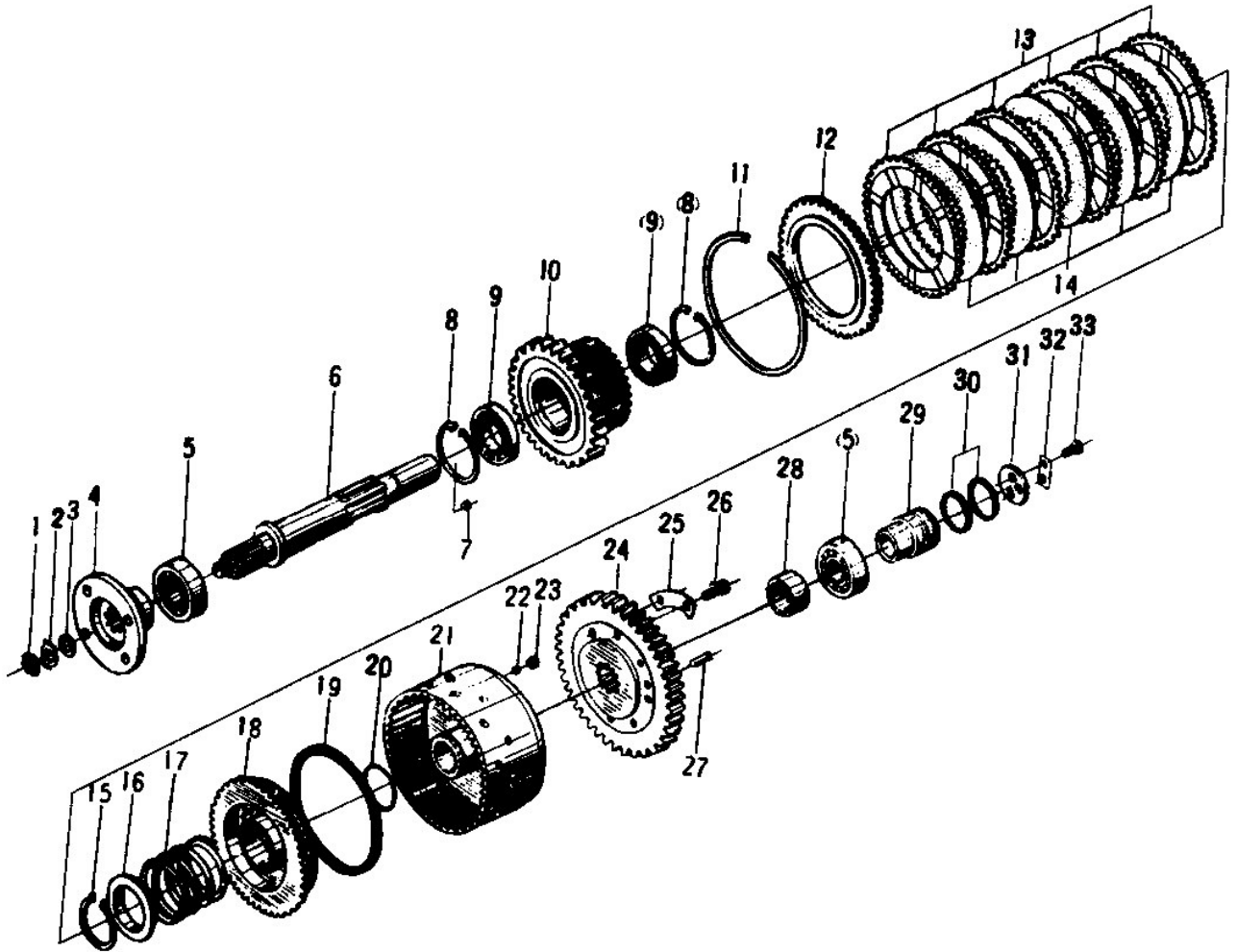
TRANSMISSION SYSTEM



C1

序号	代号	名称		数量	备注
KEY	PART NO.	DESCRIPTION		QTY	REMARKS
49		输出轴调整垫片	ADJUST SPACER	1	组
50		前输出轴封油盖	SEALING OIL COVER	1	
51		油封 65*90*12	OIL SEALING 65*90*12	2	
52		六角螺栓 M10*30	HEXANGULAR BLOT M10*30	35	
53		通风气盖	COVER	1	
54		方螺母 M6	SQUARE NUT M6	1	
55		通风片	VENTILATE	1	
56		铜套	COPPER SLEEVE	1	
57		迷宫片	IABYRINTH DISK	5	
58		铜隔套	ISOLATED SLEEVE OF COPPER	4	
59		长螺钉	LONG BLOT	1	
60		壳体	HOUSING	1	
61		纸垫	PAPER SPACER	1	
62		箱盖	COVER	1	
63		挡油盖	SNAP OIL COVER	1	
64		半圆头铆钉 4*18	RIVET 4*18	4	
65		纸垫 0.5	PAPER SPACER 0.5	1	
66		六角螺栓 M10*35	HEXANGULAR BLOT M10*35	4	
67		芯塞 7	PLUG 7	6	
68		芯塞	PLUG	6	

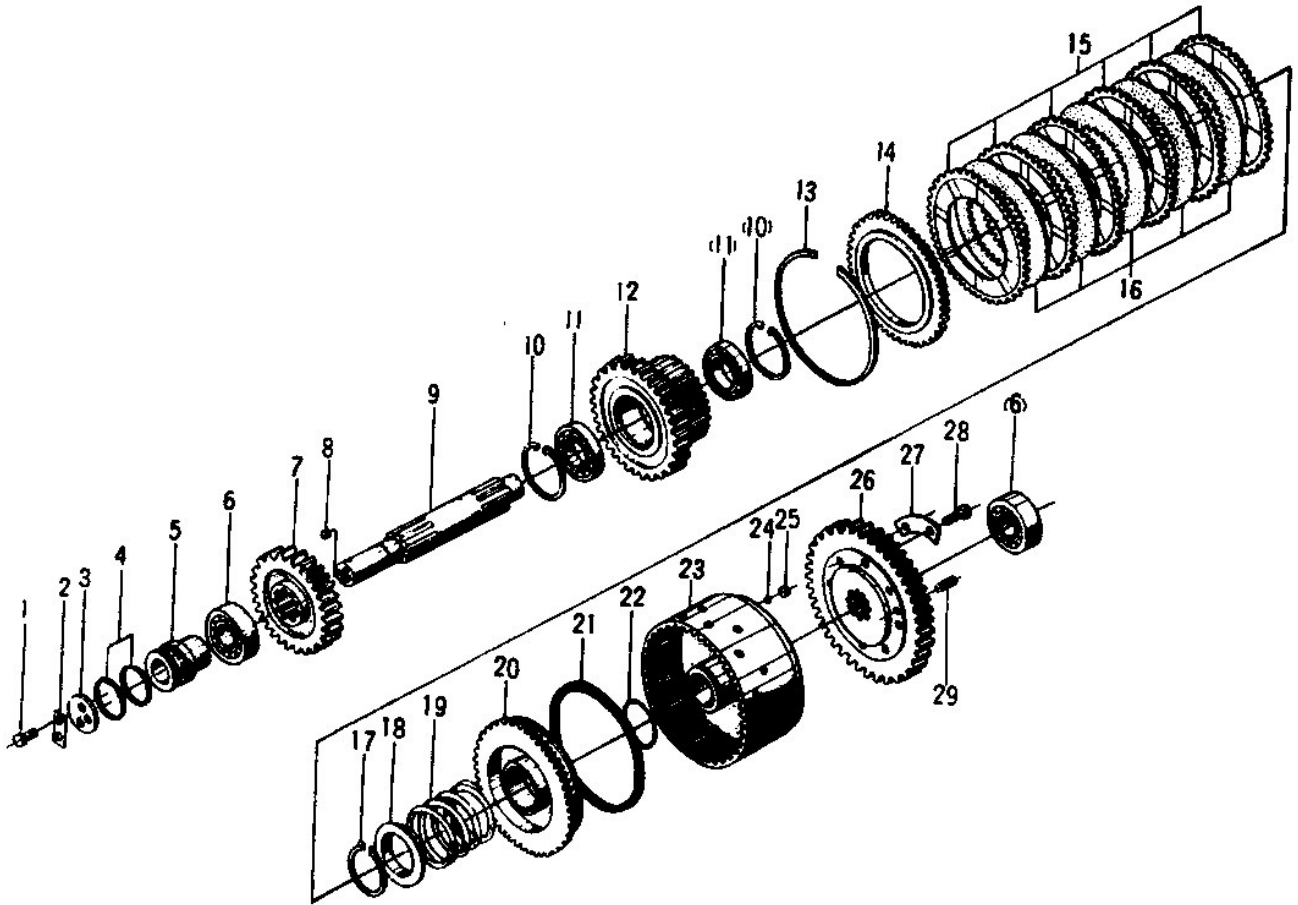
输入轴总成 INPUT SHAFT ASSEMBLY



C2

序号	代号	名称		数量	备注
KEY	PART NO.	DESCRIPTION		QTY	REMARKS
1		小圆螺母 M20*1.5	ROUND NUT M20*1.5	1	
2		圆螺母止动垫圈 20	STOP WASHER 20	1	
3		垫圈 20	WASHER 20	1	
4		凸缘总成	FLANGE ASSEMBLY	2	
5		圆锥滚子轴承 7567	TAPER BALL BEARING 7567	2	
6		输入轴	INPUT SHAFT	1	
7		闷塞 9	PLUG 9	1	
8		孔用挡圈 75	RING SNAP 75	2	
9		向心球轴承 109	BEARING 109	1	
10		齿轮 (z=38) 齿轮 (z=33)	GEAR	2	
11		挡圈	RING SNAP	1	
12		外端盖	EXTERNAL COVER	1	
13		外摩擦片	EXTERNAL FRICTION BLOCK	6	
14		内摩擦片	INTERNAL FRICTION BLOCK	5	
15		轴用弹性挡圈 60	RINGSNAP 60	1	
16		弹簧座	SPRING SEAT	1	
17		弹簧	SPRING	1	
18		活塞	PISTON	1	
19		封油圈	OIL SEAL RING	1	
20		O形密封圈 60*3.1	O-RING 60*3.1	1	
21		离合器壳体总成	CLUTCH SUMP ASS'Y	1	
22		钢球 5	IRONBALL 5	1	
23		阀座	VALVE SEAT	1	
24		齿轮 (z=46) 齿轮 (z=49)	GEAR	2	
25		止动垫	STOP SPACER	4	
26		六角螺栓 M10*25	BOLT M10*25	8	
27		圆柱销 A8*22	COLUMN PIN A8*22	2	
28		轴套	SHAFT BUSHING	1	
29		内封油套	INTERNAL OIL SEAL BUSHING	1	
30		活塞环	PISTON RING ϕ 52	2	
31		轴端挡板	SHAFT PAD SNAP	1	
32		止动垫	STOP SPACER	1	
33		六角螺栓 M8*16	HEXANGULAR BOLT M8*16	1	

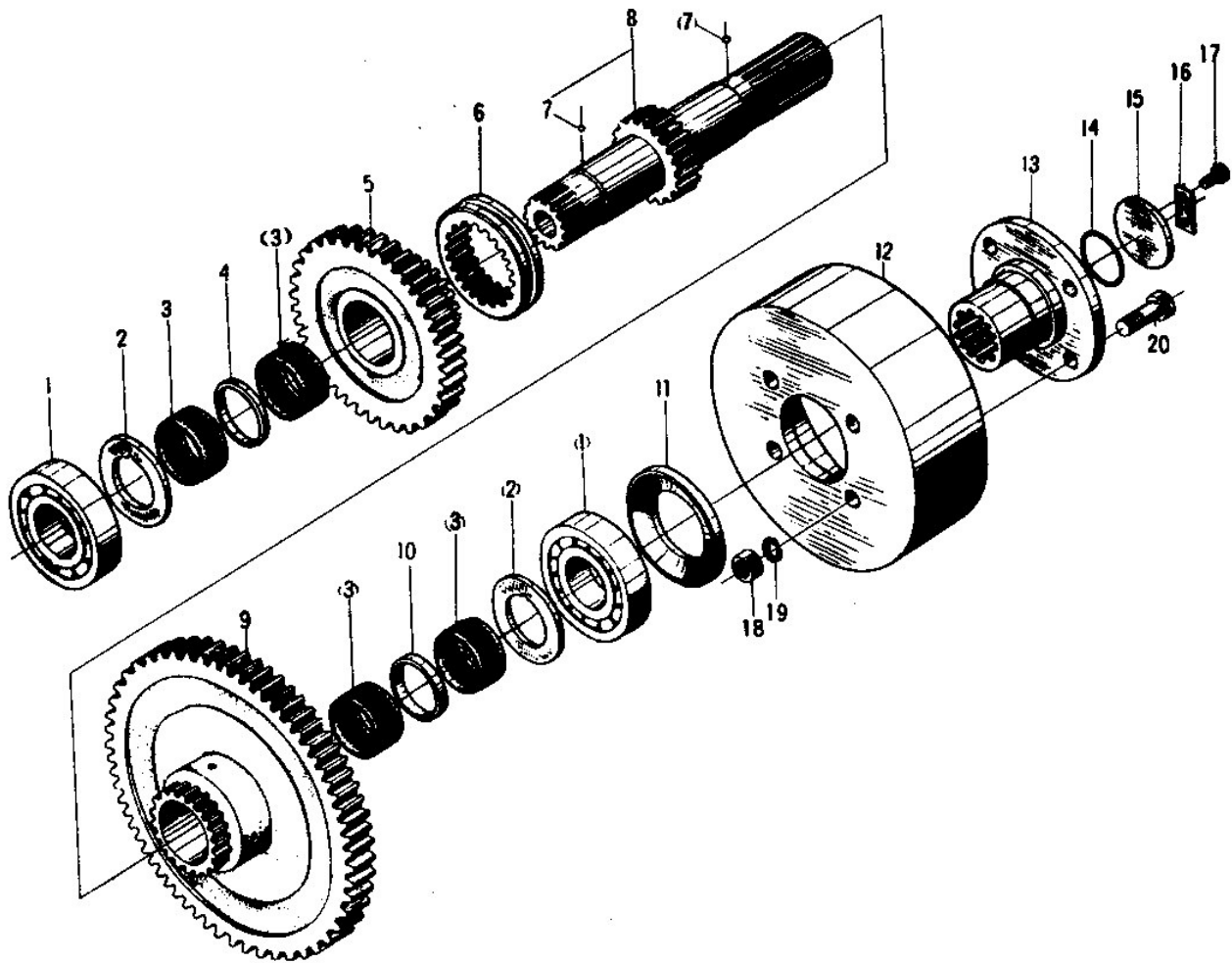
中间轴总成 INTER-SHAFT



C3

序号	代号	名称		数量	备注
KEY	PART NO.	DESCRIPTION		QTY	REMARKS
1		六角螺栓 M8*16	HEXANGULAR BOLT M8*16	2	
2		止动垫	STOP SPACER	1	
3		轴端挡板	BAFFLE	1	
4		活塞环	PISTON RING ϕ 52	2	
5		内封油套	INTERNAL SEAL RING	1	
6		圆柱滚子轴承 7507	CYLINDER BEARING 7507	2	
7		齿轮 M=5, Z=24; 齿轮 M=4.5, Z=27	GEAR	1	
8		闷塞 9	PLUG 9	1	
9		中间轴	INTER SHAFT	1	
10		孔用弹性挡圈 75	RING SNAP 75	1	
11		向心球轴承 109	BALL BEARING 109	2	
12		齿轮 M=4.5, Z=41; 齿轮 M=4.5, Z=38	GEAR	2	
13		挡圈	RING SNAP	1	
14		外端盖	EXTERNAL COVER	1	
15		外摩擦片	EXTERNAL FRICTION BLOCK	1	
16		内摩擦片	INTERNAL FRICTION BLOCK	1	
17		轴用弹性挡圈 60	RINGSNAP 60	6	
18		弹簧座	SPRING SEAT	5	
19		弹簧	SPRING	1	
20		活塞	PISTON	1	
21		封油圈	OIL SEAL RING	1	
22		O形密封圈 60*3.1	O-RING 60*3.1	1	
23		离合器壳体总成	CLUTCH SUMP ASS' Y	1	
24		钢球 5	IRONBALL 5	1	
25		阀座	VALVE SEAT	1	
26		齿轮 M=4.5, Z=54; 齿轮 M=4.5, Z=49	GEAR	1	
27		止动垫	STOP SPACER	4	
28		六角螺栓 M10*25	HEXANGULAR BOLT M10*25	8	
29		圆柱销	ROUND PIN	2	

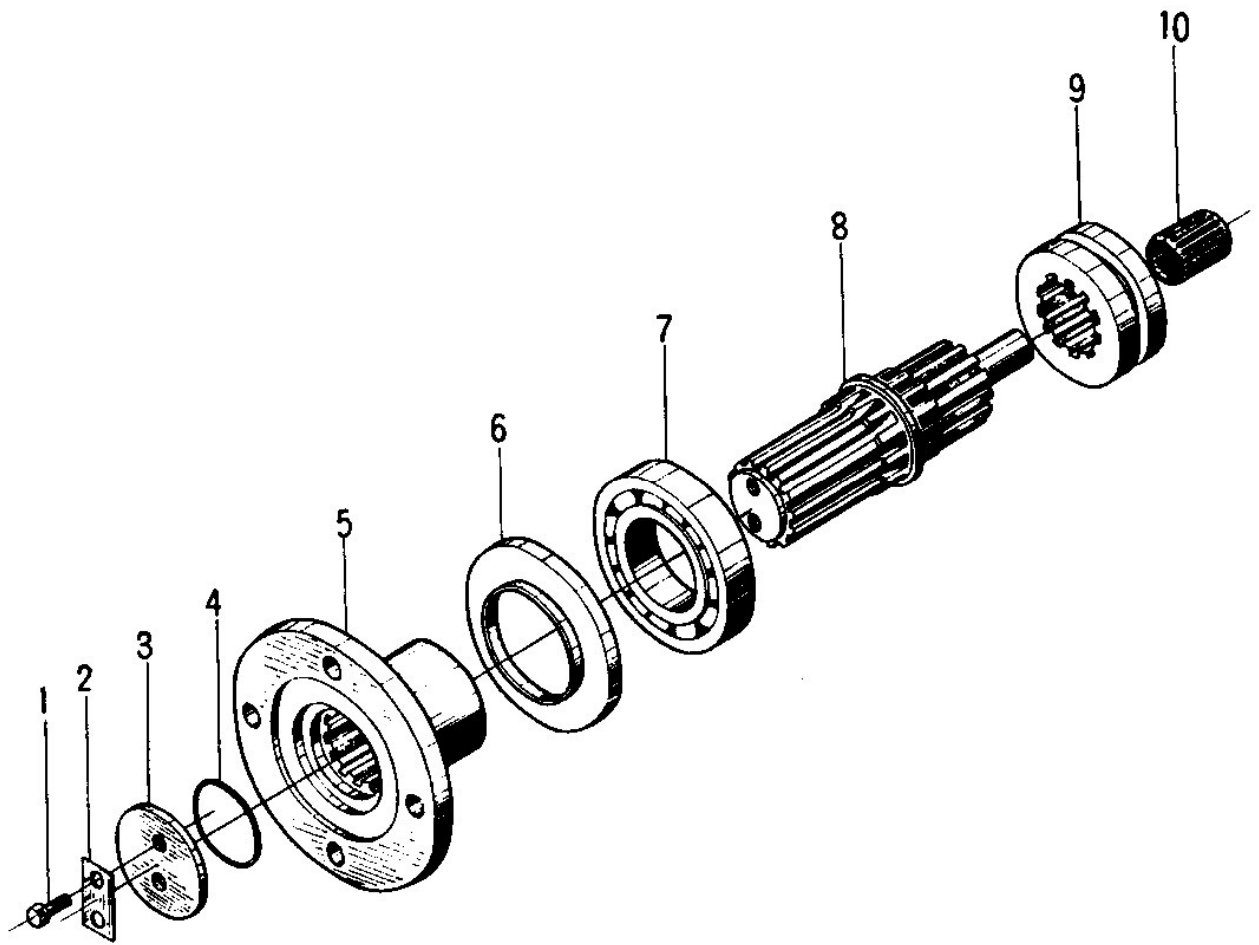
前输出轴 FORE-OUTLET SHAFT



C4

序号	代号	名称	数量	备注
KEY	PART NO.	DESCRIPTION	QTY	REMARKS
1		球轴承 310	BALL BEARING 310	2
2		止推环	STOP WASHER	2
3		滚针轴承 55*60*30	NEEDLEBEARING 55*60*30	4
4		隔圈 60*5	ISOLATED WASHER 60*5	1
5		齿轮 Z=42; 齿轮 Z=36	GEAR	1
6		高低档滑动齿套	BUSHING	1
7		钢球 4	STEEL BALL 4	2
8		前输出轴	FROE-OUTLET SHAFT	1
9		齿轮 Z=62; 齿轮 Z=56	GEAR	1
10		隔圈 60*4	ISOLATED WASHER 60*4	1
11		防尘罩	GUARD	1
12		手动制动鼓	HAND BRAKE DISC	1
13		输出轴发兰	OUTLET SHAFT FLANGE	1
14		O形密封圈 52*5.7	O-RING 52*5.7	1
15		压板	CLAMPING PLATE	1
16		止动垫	STOP WASHER	1
17		螺栓 M10*25	BOLT M10*25	2
18		六角螺母 M14	NUT M14	4
19		弹簧垫圈 14	SPRING LOCK WASHER 14	4
20		六角头螺栓 M14*40	BOLT M14*40	4

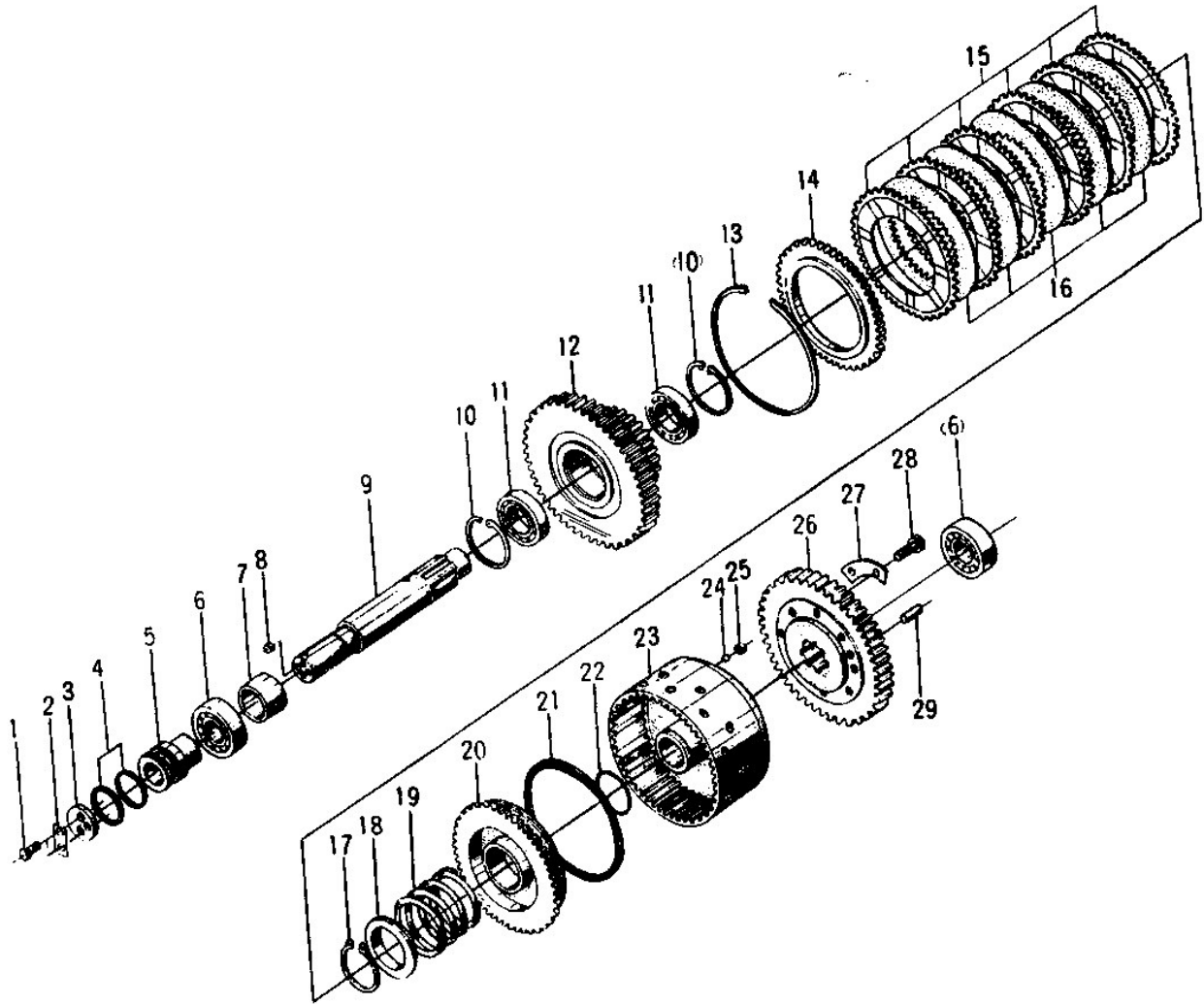
后输出轴 REAR-OUTPUT SHAFT



C5

序号	代号	名称		数量	备注
KEY	PART NO.	DESCRIPTION		QTY	REMARKS
1		螺栓 M10*25	BOLT M10*25	2	
2		止动垫	STOP SPACER	1	
3		压板	CLAMPING PLATE	1	
4		O形密封圈 52*5.7	O-RING 52*5.7	1	
5		输出轴发兰	FLANGE FOR OUTPUT SHAFT	1	
6		防尘罩	GUARD	1	
7		球轴承	BALL BEARING	1	
8		后输出轴	REAR-OUTPUT SHAFT	1	
9		后轴脱开机构滑套	HARNESS	1	
10		滚针轴承 19.051*28.588*36.75	NEEDLEBEARING 55*60*30	1	

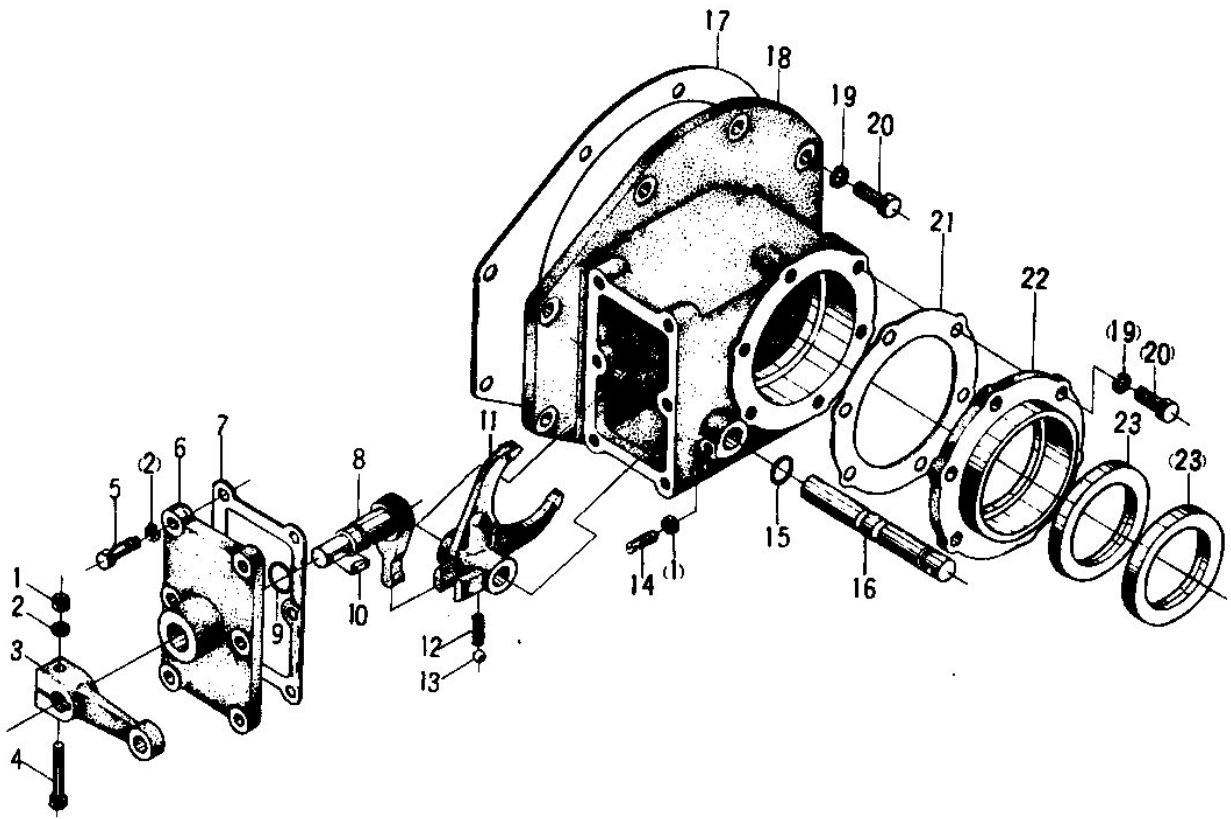
倒档轴总成 REVERSE SHAFT ASSEMBLY



C6

序号	代号	名称		数量	备注
KEY	PART NO.	DESCRIPTION		QTY	REMARKS
1		六角螺栓 M8*16	HEXANGULAR BOLT M8*16	2	
2		止动垫	STOP SPACER	1	
3		轴端挡板	BAFFLE	1	
4		活塞环 ϕ 52	PISTON RING ϕ 52	2	
5		内封油套	INTERNAL SEAL RING	1	
6		圆柱滚子轴承 7507	CYLINDER BEARING 7507	2	
7		轴套	SHAFT SLEEVE	1	
8		闷塞 9	PLUG 9	1	
9		倒档轴	REVERSE SHAFT	1	
10		孔用弹性挡圈 75	RING SNAP 75	2	
11		向心球轴承 109	BALL BEARING 109	2	
12		齿轮 M=4.5, Z=49; 齿轮 M=4.5, Z=38	GEAR	1+1	
13		挡圈	RING SNAP	1	
14		外端盖	EXTERNAL COVER	1	
15		外摩擦片	EXTERNAL FRICTION BLOCK	1	
16		内摩擦片	INTERNAL FRICTION BLOCK	1	
17		轴用弹性挡圈 60	RINGSNAP 60	6	
18		弹簧座	SPRING SEAT	5	
19		弹簧	SPRING	1	
20		活塞	PISTON	1	
21		封油圈	OIL SEAL RING	1	
22		O形密封圈 60*3.1	O-RING 60*3.1	1	
23		离合器壳体总成	CLUTCH SUMP ASS' Y	1	
24		钢球 5	IRONBALL 5	1	
25		阀座	VALVE SEAT	1	
26		齿轮 M=4.5, Z=44; 齿轮 M=4.5, Z=49	GEAR	1+1	
27		止动垫	STOP SPACER	4	
28		六角螺栓 M10*25	HEXANGULAR BOLT M10*25	8	
29		圆柱销 A8*22	ROUND PIN A8*22	2	

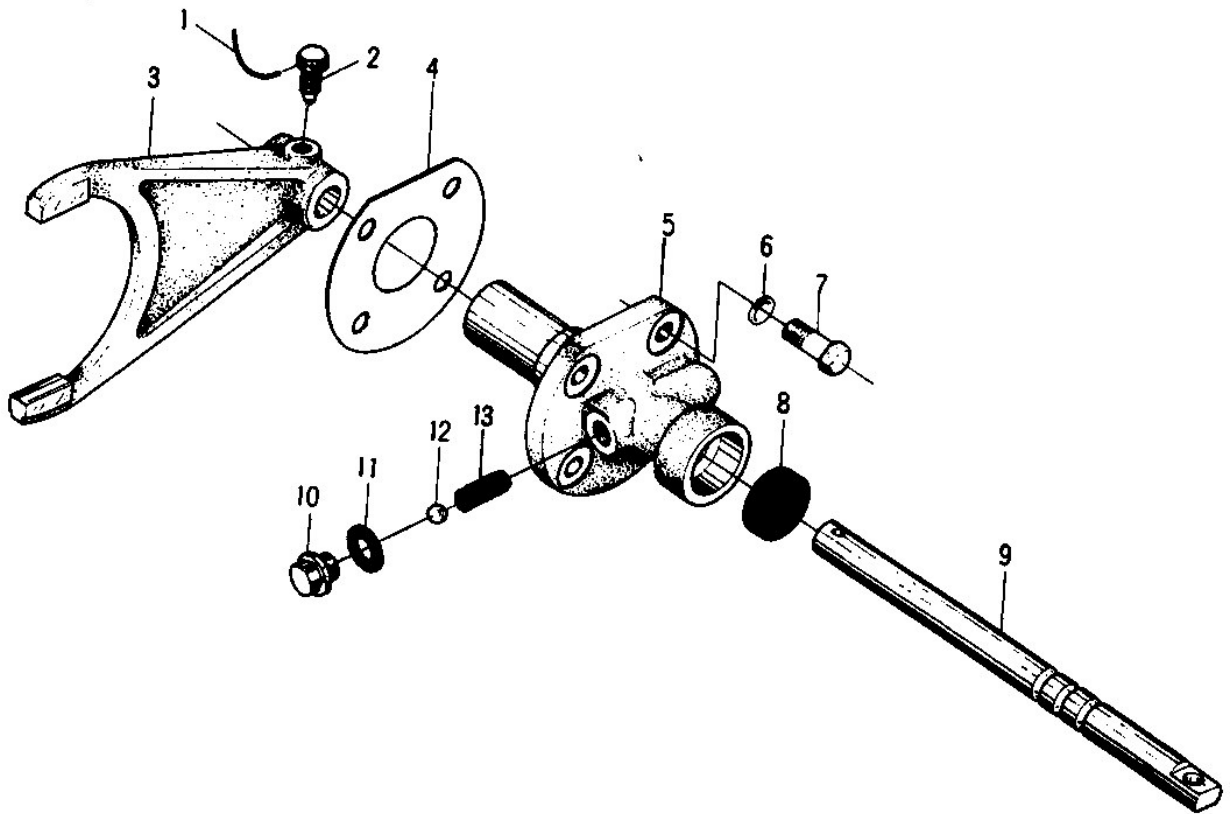
拨叉机构 FORK SYSTEM



C7

序号	代号	名称	数量	备注
KEY	PART NO.	DESCRIPTION	QTY	REMARKS
1		六角螺母 M8	NUT M8	2
2		弹簧垫圈 8	WASHER 8	7
3		摇臂	ROCKER ARM	1
4		六角螺栓 M8*45	HEXANGULAR BOLT M8*45	1
5		六角螺栓 M8*25	HEXANGULAR BOLT M8*25	6
6		侧盖	SIDE COVER	1
7		纸垫	PAPER SPACER	1
8		杆臂	ROD ARM	1
9		O形圈 20*2.5	O-RING 20*2.5	1
10		半圆键 6*22	HALF-MOON BOND 6*22	1
11		后桥脱开拨叉	HARNESS	1
12		弹簧 1.6	SPRING	1
13		钢球 10	BALL 10	1
14		紧定螺栓	LOCK SCREW	1
15		O形圈 18*2.5	O-RING 18*2.5	1
16		拨叉轴	FORK SHAFT	1
17		纸垫	PAPER SPACER	1
18		拨叉机构壳体	FORK SYSTEM HOUSING	1
19		垫圈 10	WASHER 10	14
20		六角螺栓 M10*25	HEXANGULAR BOLT M10*25	14
21		纸垫	PAPER SPACER	1
22		后输出轴油封盖	REAR OUTPUT SHAFT SKELET	1
23		油封 65*90*12	OIL SEALING 65*90*12	2

高低速换挡拨叉机构 HIGH-LOW SPEED FORK SYSTEM



C8

序号	代号	名称	数量	备注
KEY	PART NO.	DESCRIPTION	QTY	REMARKS
1		铁丝 $\phi 1$	1	LRON CHAN $\phi 1$
2		紧定螺栓	1	LOCK SCREW
3		高低换挡拨叉	1	DIAL FORK
4		纸垫	1	PAPER SPACER
5		拨叉支架	1	BRACKET
6		垫圈 10	4	WASHER 10
7		六角螺栓 M10*30	4	HEXANGULAR BOLT M10*30
8		油封 18*35*10	1	OIL SEAL 18*35*10
9		拨叉轴	1	SHAFT
10		螺塞 M12*1.25	1	PLUG M12*1.25
11		垫圈	1	WASHER
12		钢球 10	1	STEEL BALL 10
13		弹簧 41.6	1	SPRING 41.6

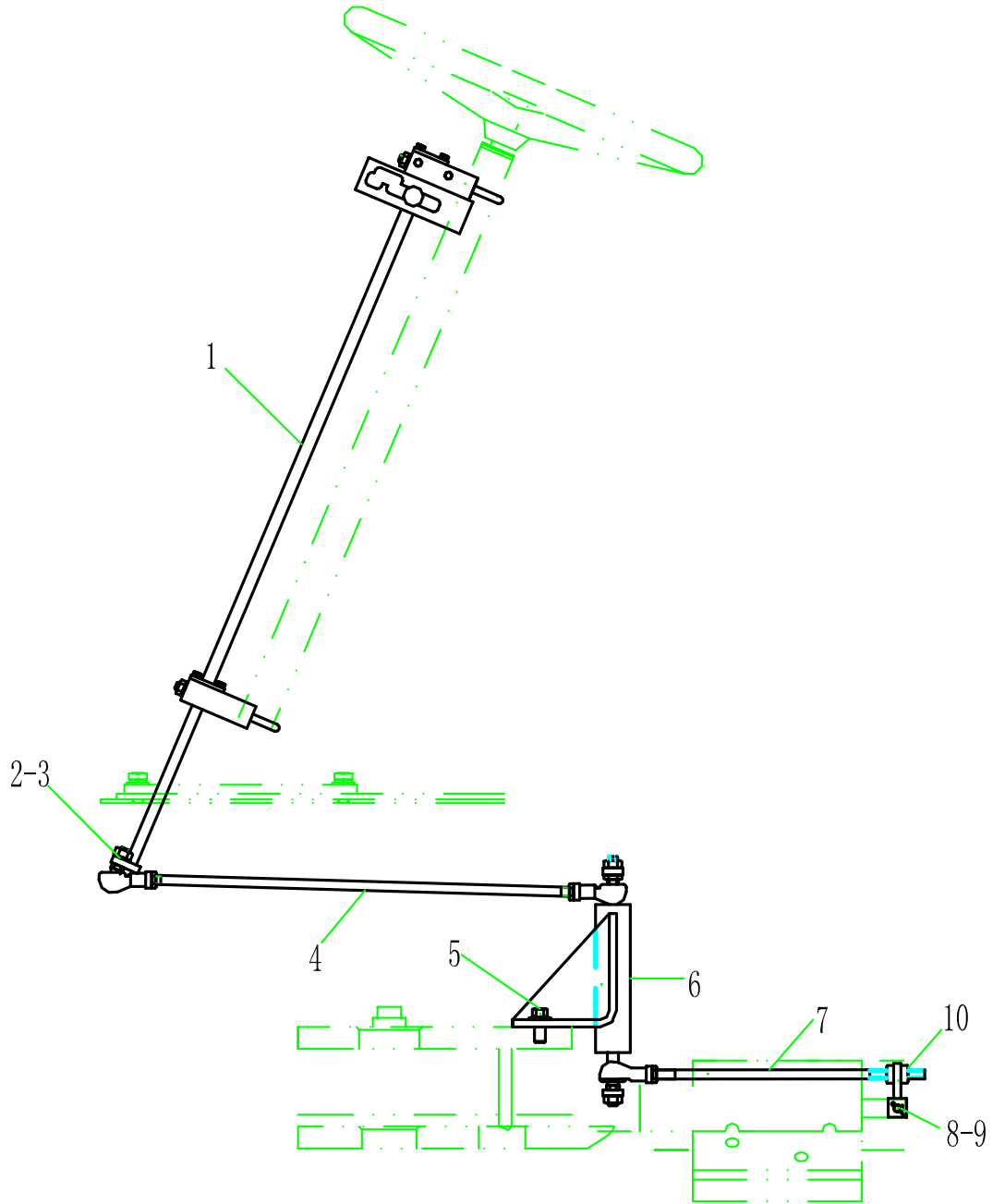
D 变速操纵系统
TRANSMISSION CONTROL SYSTEM

山东临工工程机械有限公司
SHANDONG LINGONG CONSTRUCTION MACHINERY CO., LTD

D1

变速操纵机构

TRANSMISSION CONTROL SYSTEM



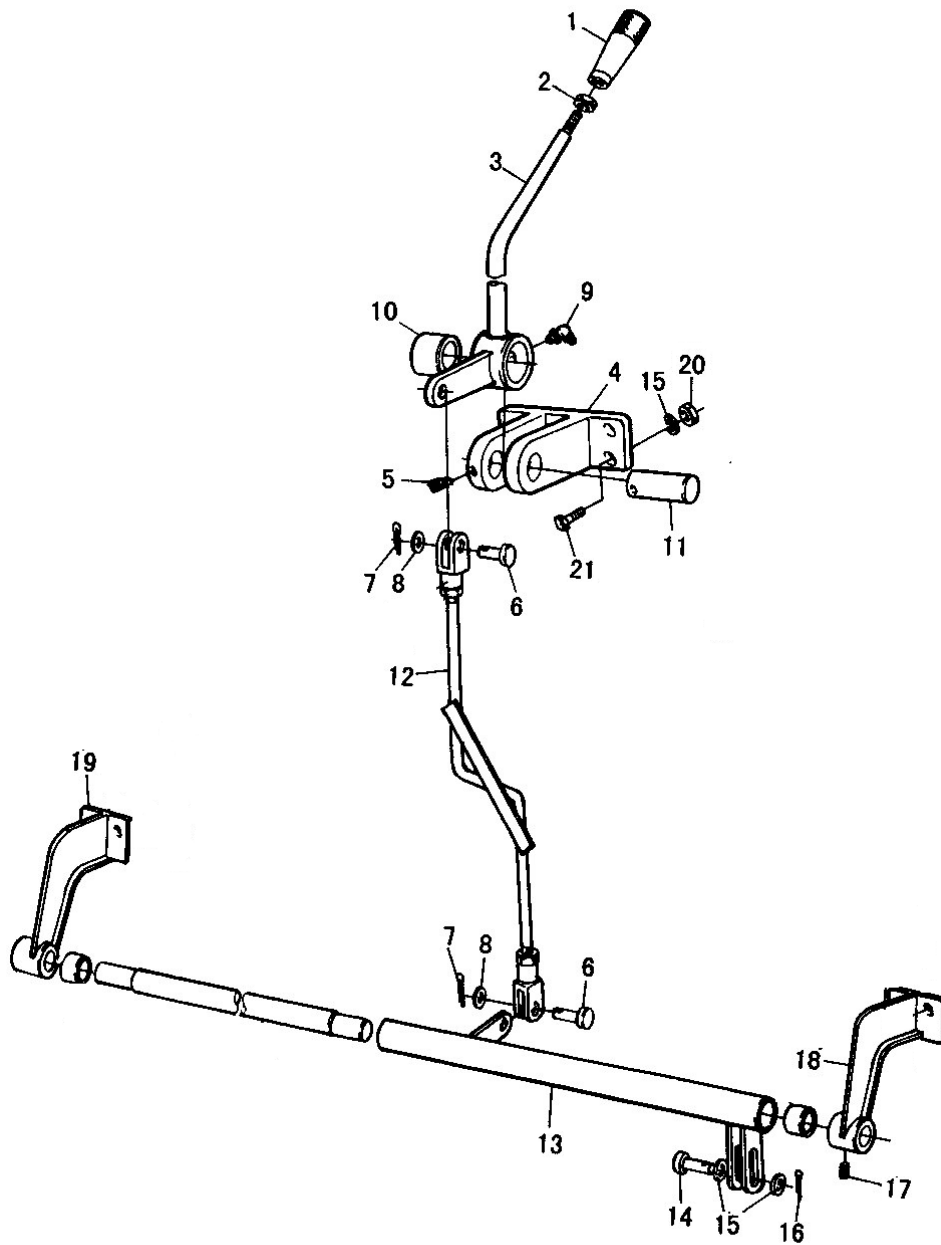
D1

序号	代号	名称		数量	备注
KEY	PART NO.	DESCRIPTION		QTY	REMARKS
1	2040900042	上部机构	TOP ORGAN	1	部件
2	4013000036	螺母 GB6171-M10*1EpZn-8	NUT GB6171-M10*1EpZn-8	3	
3	4015000025	垫圈 GB93-10-65Mn	WASHER GB93-10-65Mn	3	
4	29060007741	连接杆	CONNECT ROD	1	部件
5	4011000560	螺栓 GB16674-M12*25EpZn-8.8	BOLT GB16674-M12*25EpZn-8.8	2	
6	2040900044	中部机构	MIDDLE ORGAN	1	部件
7	2040900039	连接机构	BINDINY MECHANISM	1	部件
8	4016000183	开口销 GB91-3.2*22EpZn-Q235A	SPLIT PIN GB91-3.2*22EpZn-Q235A	1	
9	4016000143	销轴 GB882-B8*26EpZn-35	PIN GB882-B8*26EpZn-35	1	
10	3040900107	拨叉	DIAL FORK	1	Q235-A

D2

高低速操纵机构

HIGH-LOW SPEED CONTROL SYSTEM



D2

序号	代号	名称		数量	备注
KEY	PART NO.	DESCRIPTION		QTY	REMARKS
1	2060900106	操纵手柄	CONTROL HANDLE	1	部件
2	4013000011	螺母 GB6170-M12EpZn-8	NUT GB6170-M12EpZn-8	1	
3	2040900058	高低速手柄	HIGH-LOW SPEED HANDLE	1	部件
4	2040900053	固定座	MOUNTING SEAT	2	部件
5	4014000018	螺钉 GB75-M10*20EpZn-22H	SCREW GB75-M10*20EpZn-22H	1	
6	3060900559	销轴	PIN	2	
7	4016000035	开口销 GB91-4*20EpZn-Q235A	SPLIT PIN GB91-4*20EpZn-Q235A	2	
8	4015000168	垫圈 GB97.1-12EpZn-300HV	WASHER GB97.1-12EpZn-300HV	2	
9	4030000101	油杯 JB7940.2-45° M10*1	GREASE JB7940.2-45° M10*1	3	部件
10	3060900108	衬套	BUSH	1	ZCuSn10Pb1
11	3040900087	轴	SHAFT	1	45
12	2040900047	上部机构	TOP ORGAN	1	部件
13	2040900055	下部机构	DOWN ORGAN	1	部件
14	4016000131	销轴 GB882-B10*32EpZn-35	PIN GB882-B10*32EpZn-35	1	
15	4015000162	垫圈 GB97.1-10EpZn-300HV	WASHER GB97.1-10EpZn-300HV	6	
16	4016000061	开口销 GB91-2.5*25EpZn-Q235A	SPLIT PIN GB91-2.5*25EpZn-Q235A	1	
17	4014000036	螺钉 GB75-M8*10EpZn-14H	SCREW GB75-M8*10EpZn-14H	1	
18	2040900056	支架	FRAME	1	部件
19	2040900057	支架	FRAME	1	部件
20	4013000007	螺母 GB6170-M10EpZn-8	NUT GB6170-M10EpZn-8	4	
21	4011000184	螺栓 GB5783-M10*40EpZn-8.8	BOLT GB5783-M10*40EpZn-8.8	4	

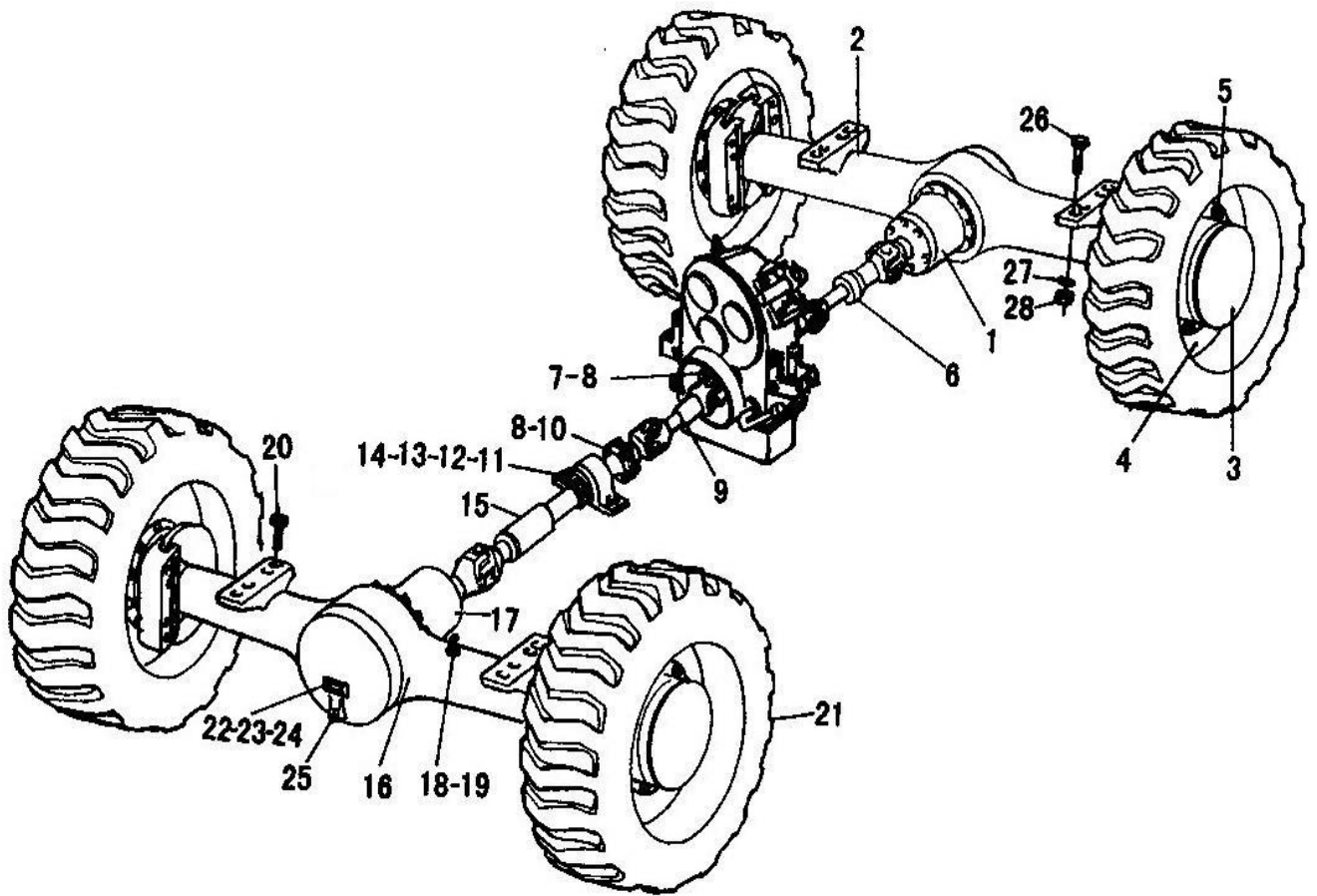
E 驱动桥系统

AXLE SYSTEM

山东临工工程机械有限公司
SHANDONG LINGONG CONSTRUCTION MACHINERY CO., LTD

E1

驱动桥系统 AXLE SYSTEM

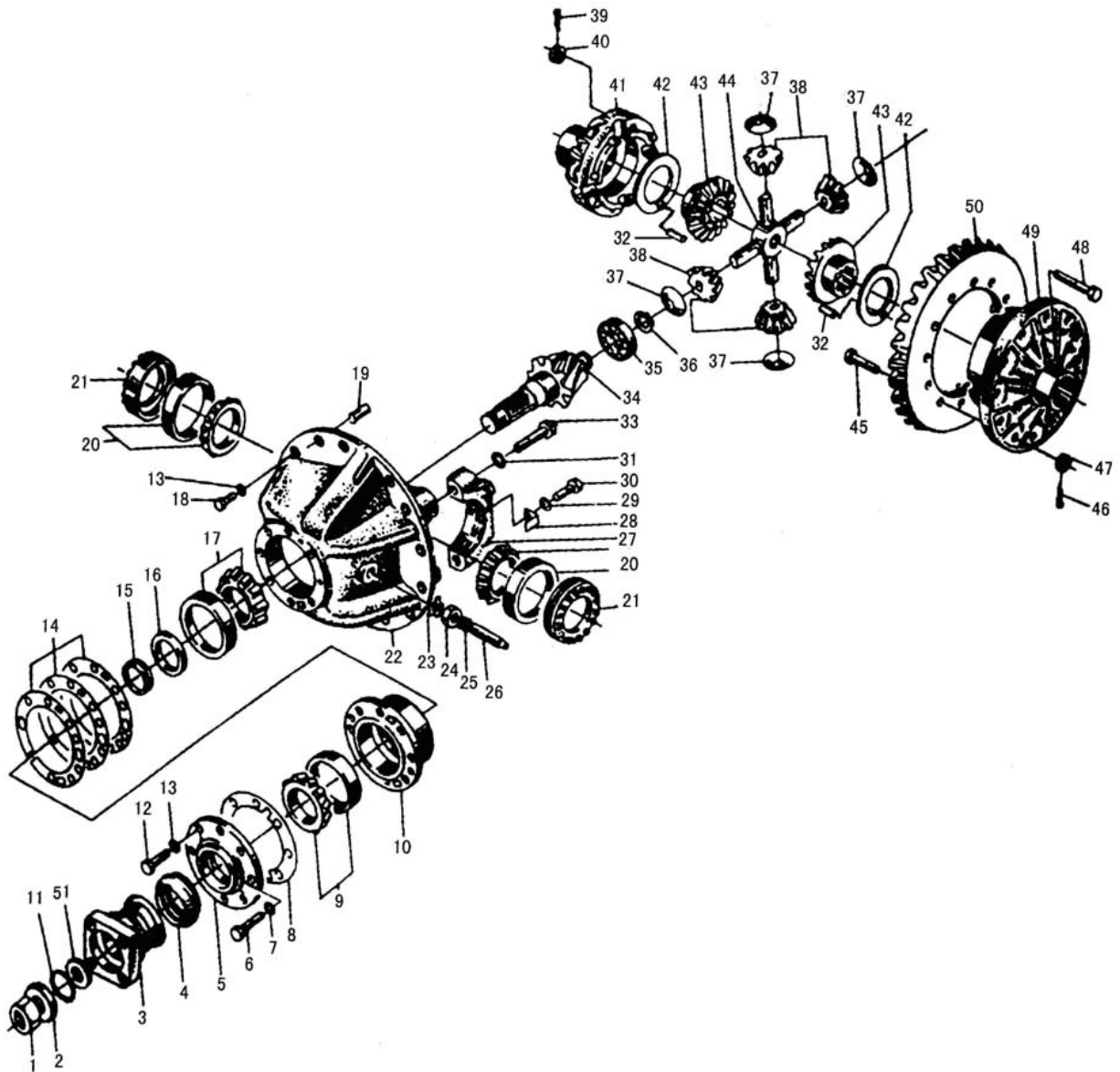


E1

序号	代号	名称		数量	备注
KEY	PART NO.	DESCRIPTION		QTY	REMARKS
1	2050900033	后主传动	REAR AXLE MAIN DRIVE	1	
2	2050900069	后桥壳总成	REAR AXLE HOUSING	1	
3	2050900004	轮边减速器	FINAL DRIVE ASSEMBLY	4	
4	4190000413	轮辋	RIM	4	
5	3050900003	轮辋螺母	RIM NUT	40	
6	2050900060	后传动轴	REAR TRANSMISSION SHAFT	1	
7	3050900177	螺栓	BOLT	4	
8	4013000073	螺母 GB889. 2-M14*1. 5EpZn-8	NUT GB889. 2-M14*1. 5EpZn-8	20	
9	2050900015	中传动轴	MID TRANSMISSION SHAFT	1	
10	3050900002	螺栓	BOLT	16	
11	4011000064	螺栓 GB5782-M12*50EpZn-8. 8	NUT GB5782-M12*50EpZn-8. 8	2	
12	4013000011	螺母 GB6170-M12EpZn-8	NUT GB6170-M12EpZn-8	2	
13	4015000168	垫圈 GB97. 1-12EpZn-300HV	WASHER GB97. 1-12EpZn-300HV	4	
14	4015000026	垫圈 GB93-12-65Mn	WASHER GB93-12-65Mn	2	
15	2050900009	前传动轴	FRONT TRANSMISSION SHAFT	1	
16	2050900070	前桥壳总成	REAR AXLE HOUSING	1	
17	2050900006	前主传动	FRONT REAR AXLE MAIN DRIVE	1	
18	4013000078	螺母 GB6173-M10*1EpZn-05	NUT GB6173-M10*1EpZn-05	2	
19	3050900068	透气管	BREATHE PIPE	2	
20	4011000520	螺栓 GB5785-M24*2*100-8. 8	BOLT GB5785-M24*2*100-8. 8	8	
21	4110000003	轮胎 GB2980-17. 5-25	TIRE ASS'Y GB2980-17. 5-25	4	
22	3050900173	后桥标牌	REAR AXLE SCUTCHEON	1	
23	3050900174	前桥标牌	FRONT AXLE SCUTCHEON	1	
24	4019000012	铆钉 GB827-3*5-BL2	RIVET GB827-3*5-BL2	8	
25	4120000080	螺塞 Q/ZB286-ZG3/4"-Q235A	PLUG Q/ZB286-ZG3/4"-Q235A	4	
26	4011000521	螺栓 GB5785-M24*2*95-8. 8	BOLT GB5785-M24*2*95-8. 8	8	
27	4013000157	螺母 GB889. 2-M24*2-8	NUT GB889. 2-M24*2-8	16	
28	4015000031	垫圈 GB93-24-65Mn	WASHER GB93-24-65Mn	16	

前主传动总成

FRONT AXLE MAIN DRIVE ASS' Y



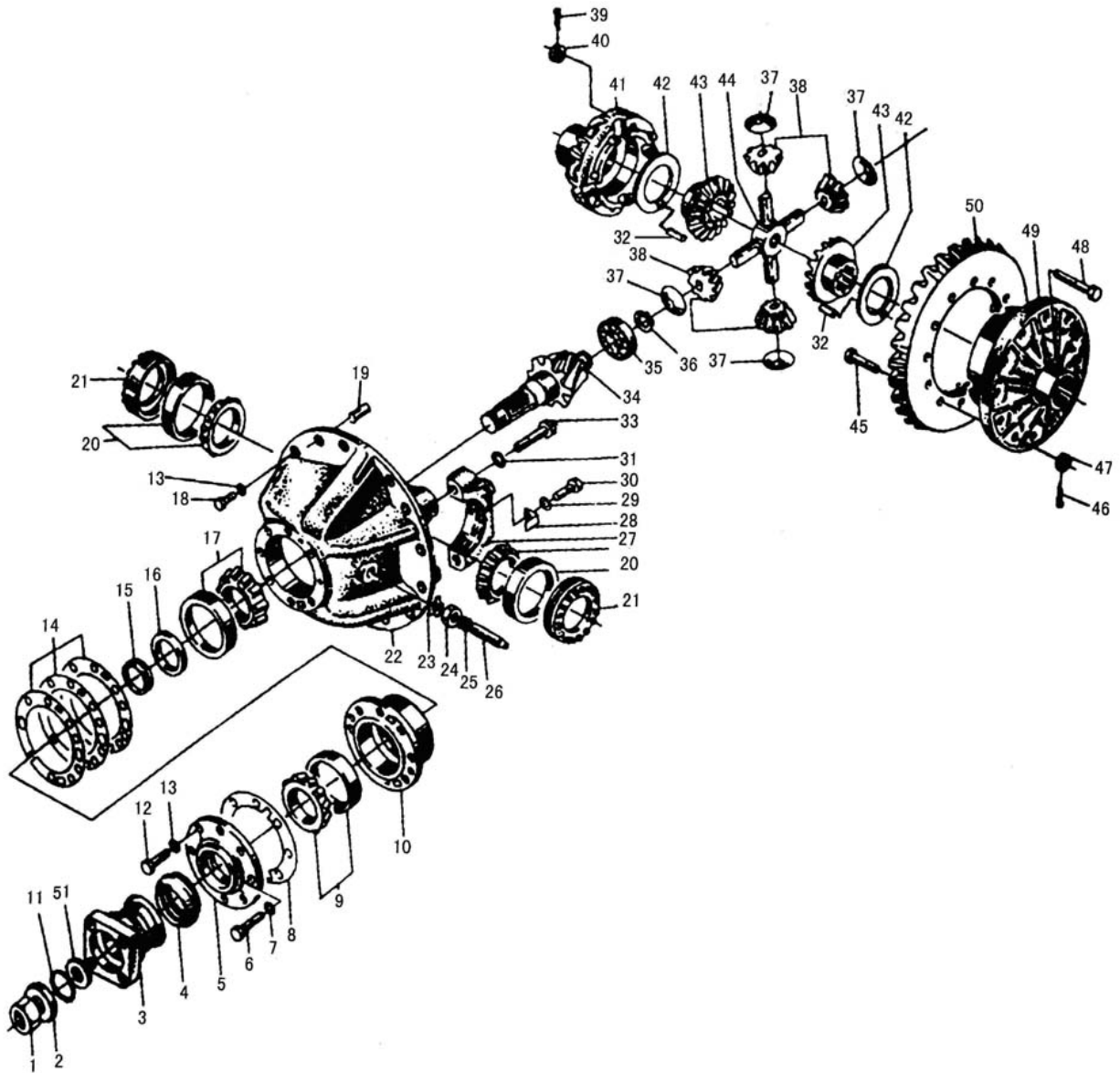
E2

序号	代号	名称		数量	备注
KEY	PART NO.	DESCRIPTION		QTY	REMARKS
1	4013000066	螺母 GB889. 2-M33*1. 5-8	LOCK NUT GB889-M33*1. 5-8	1	
2	3050900007	垫圈	WASHER	1	
3	2050900011	输入法兰	INPUT PLANGE	1	
4	4030000048	骨架油封 HG4-692-SG70*95*12	SKELETON OIL SEAL	1	
5	3050900009	密封盖	SEALING COVER	1	
6	4011000067	螺栓 GB5782-M14*55EpZn-8. 8	BOLT	7	
7	4015000027	垫圈 GB93-14-65Mn	WASHER	7	
8	3050900172	垫片	GASKET	1	
9	4021000028	滚动轴承 GB297-31310	BEARING	1	
10	3050900013	轴承套	BEARING SEAT	1	
11	3050900008	O型密封圈	O-RING	1	
12	4011000186	螺栓 GB5782-M12*55EpZn-8. 8	BOLT	1	
13	4015000026	垫圈 GB93-12-65Mn	WASHER	15	
14	3050900011	调整垫片	ADJUSTING SHIM	1	
15	3050900030	垫片	SPACER	1	
16	3050900012	轴套	SHAFT SLEEVE	1	
17	4021000029	滚动轴承 GB297-31311	BEARING	1	
18	4011000124	螺栓 GB5786-M12*1. 25*35EpZn-10. 9	BOLT	14	
19	4016000124	销 GB119. 2-10u8*30	ROUND PIN D10*30	2	
20	4021000035	滚动轴承 GB297-32215	BEARING	2	
21	3050900019	调整螺母	ADJUSTING NUT	2	
22	3050900016	托架	CARRIER	1	
23	29070000311	锁紧片	LOCKING SHIM	1	
24	4013000052	螺母 GB6173-M27*2-05	NUT	1	
25	29070000661	铜套	COPPER SLEEVE	1	
26	29070000651	螺栓	BOLT	1	
27	3050900023	轴承座	BEARING SEAT	2	
28	3050900024	锁紧片	LOCKING LEAF	2	
29	4015000025	垫圈 GB93-10-65Mn	WASHER	2	
30	4011000597	螺栓 GB5786-M10*1*20EpZn-8. 8	BOLT	2	
31	29070001301	垫圈	WASHER	4	
32	29070000461	固定销	ROUND PIN	2	
33	29090007971	螺栓	BOLT	4	
34	3050900055	主动螺旋伞齿轮	SPIRAL BEVELGEAR PINION	1	
35	4021000026	滚动轴承 GB283-NUP2306	BEARING NUP	1	
36	4015000019	挡圈 GB894. 1-30-65Mn	RING SNAP	1	
37	3050900017	锥齿轮垫片	WASHER	4	
38	3050900018	锥齿轮	PINION FOR DIFFERENTIAL	4	
39	29090007961	垫圈	WASHER	8	
40	4013000197	螺母 GB6176-M14*1. 5-10	NUT	8	
41	3050900020	差速器左壳	LEFT CASE DIFF	1	
42	3050900022	半轴齿轮垫片	WSGER THRUST	2	
43	3050900021	半轴齿轮	AXLE SHAFT GAER	2	
44	3050900026	十字轴	CARDAN SHAFT	1	
45	29070010851	螺栓	BOLT	12	
46	29070009511	垫圈	WASHER	12	
47	4013000198	螺母 GB6176-M16*1. 5-10	NUT	12	
48	29090007951	螺栓	BOLT	8	
49	3050900027	差速器右壳	RIGHT CASE DIFF	1	
50	3050900056	大螺旋伞齿轮	SPIRAL BEVEL DRIVEN GEAR	1	
51	3050900032	挡圈	RING SNAP	1	

E3

后主传动总成

REAR AXLE MAIN DRIVE ASS'Y



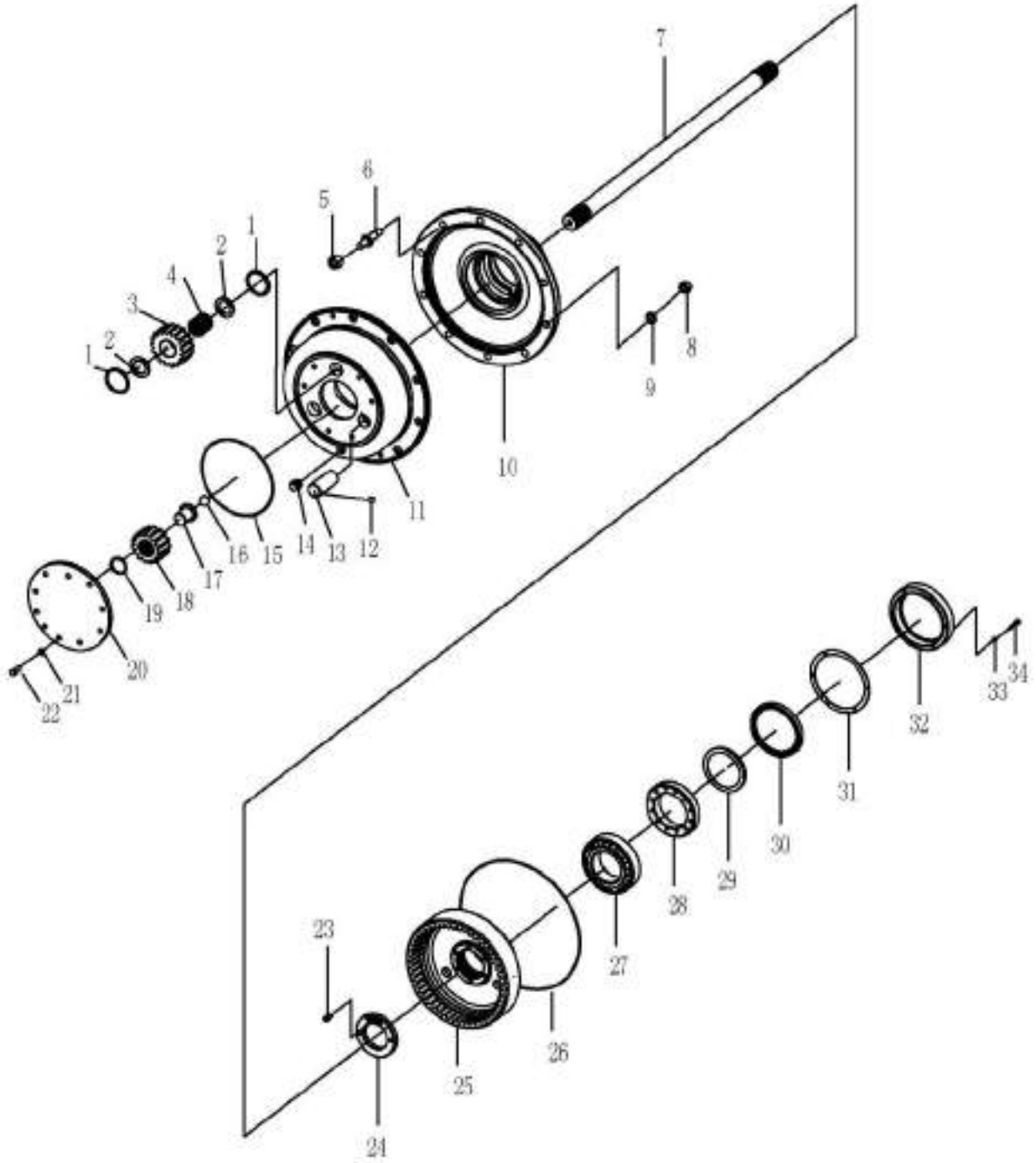
E3

序号	代号	名称		数量	备注
KEY	PART NO.	DESCRIPTION		QTY	REMARKS
1	4013000066	螺母 GB889. 2-M33*1. 5-8	LOCK NUT GB889-M33*1. 5-8	1	
2	3050900007	垫圈	WASHER	1	
3	2050900011	输入法兰	INPUT PLANGE	1	
4	4030000048	骨架油封 HG4-692-SG70*95*12	SKELETON OIL SEAL	1	
5	3050900009	密封盖	SEALING COVER	1	
6	4011000067	螺栓 GB5782-M14*55EpZn-8. 8	BOLT	7	
7	4015000027	垫圈 GB93-14-65Mn	WASHER	7	
8	3050900172	垫片	GASKET	1	
9	4021000028	滚动轴承 GB297-31310	BEARING	1	
10	3050900013	轴承套	BEARING SEAT	1	
11	3050900008	O型密封圈	O-RING	1	
12	4011000186	螺栓 GB5782-M12*55EpZn-8. 8	BOLT	1	
13	4015000026	垫圈 GB93-12-65Mn	WASHER	15	
14	3050900011	调整垫片	ADJUSTING SHIM	1	
15	3050900030	垫片	SPACER	1	
16	3050900012	轴套	SHAFT SLEEVE	1	
17	4021000029	滚动轴承 GB297-31311	BEARING	1	
18	4011000124	螺栓 GB5786-M12*1. 25*35EpZn-10. 9	BOLT	14	
19	4016000124	销 GB119. 2-10u8*30	ROUND PIN D10*30	2	
20	4021000035	滚动轴承 GB297-32215	BEARING	2	
21	3050900019	调整螺母	ADJUSTING NUT	2	
22	3050900016	托架	CARRIER	1	
23	29070000311	锁紧片	LOCKING SHIM	1	
24	4013000052	螺母 GB6173-M27*2-05	NUT	1	
25	29070000661	铜套	COPPER SLEEVE	1	
26	29070000651	螺栓	BOLT	1	
27	3050900023	轴承座	BEARING SEAT	2	
28	3050900024	锁紧片	LOCKING LEAF	2	
29	4015000025	垫圈 GB93-10-65Mn	WASHER	2	
30	4011000597	螺栓 GB5786-M10*1*20EpZn-8. 8	BOLT	2	
31	29070001301	垫圈	WASHER	4	
32	29070000461	固定销	ROUND PIN	2	
33	29090007971	螺栓	BOLT	4	
34	3050900015	主动螺旋伞齿轮	SPIRAL BEVELGEAR PINION	1	
35	4021000026	滚动轴承 GB283-NUP2306	BEARING NUP	1	
36	4015000019	挡圈 GB894. 1-30-65Mn	RING SNAP	1	
37	3050900017	锥齿轮垫片	WASHER	4	
38	3050900018	锥齿轮	PINION FOR DIFFERENTIAL	4	
39	29090007961	垫圈	WASHER	8	
40	4013000197	螺母 GB6176-M14*1. 5-10	NUT	8	
41	3050900020	差速器左壳	LEFT CASE DIFF	1	
42	3050900022	半轴齿轮垫片	WSGER THRUST	2	
43	3050900021	半轴齿轮	AXLE SHAFT GAER	2	
44	3050900026	十字轴	CARDAN SHAFT	1	
45	29070010851	螺栓	BOLT	12	
46	29070009511	垫圈	WASHER	12	
47	4013000198	螺母 GB6176-M16*1. 5-10	NUT	12	
48	29090007951	螺栓	BOLT	8	
49	3050900027	差速器右壳	RIGHT CASE DIFF	1	
50	3050900029	大螺旋伞齿轮	SPIRAL BEVEL DRIVEN GEAR	1	
51	3050900032	挡圈	RING SNAP	1	

E4

轮边减速器总成

FINAL DRIVE ASSEMBLY



E4

序号	代号	名称		数量	备注
KEY	PART NO.	DESCRIPTION		QTY	REMARKS
1	3050900052	垫片	SPACER	6	
2	3050900042	挡环	RING SNAP	6	
3	3050900041	行星齿轮	PLANET GEAR	3	
4	4090000003	滚针 GB309-4*38-GCr15	ROLLER GB309-4*38-GCr15	84	
5	3050900003	轮辋螺母	RIM NUT	10	
6	3050900044	轮辋螺栓	RIM BOLT	10	
7	3050900050	半轴	DIFFERENTIAL AXLE	1	
8	4013000136	螺母 GB6171-M18*1.5EpZn-8	NUT GB6171-M18*1.5EpZn-8	10	
9	4015000029	垫圈 GB93-18-65Mn	WASHER GB93-18-65Mn	10	
10	3050900046	轮毂	HUB WHEEL	1	
11	29070007661	行星轮架	CARRIER OF PLANT GEAR	1	
12	4090000007	钢球 GB308-8-GCr15	STEEL BALL GB308-8-GCr15	3	
13	3050900043	行星齿轮轴	PLANET GEAR SPINDLE	3	
14	4120000080	螺塞 Q/ZB286-ZG3/4"-Q235A	PLUG Q/ZB286-ZG3/4"-Q235A	1	
15	29070007681	O型密封圈	O-RING	1	
16	4090000006	钢球 GB308-17.462-GCr15	STEEL BALL	1	
17	29070009161	定位块	LOCK BLOCK	1	
18	3050900040	太阳轮	GEAR-SUN	1	
19	4015000046	挡圈 GB894.1-50-65Mn	RING SNAP GB894.1-50-65Mn	1	
20	29070007671	盖	COVER	1	
21	4015000025	垫圈 GB93-10-65Mn	WASHER	10	
22	4011000084	螺栓 GB5783-M10*30EpZn-8.8	BOLT	10	
23	4014000118	螺钉 GB70-M8*1*20-8.8	SCREW GB70-M8*1*20-8.8	1	
24	3050900047	圆螺母	ROUND NUT	1	
25	3050900037	内齿轮	AXLE RING GEAR	1	
26	3050900045	O形圈	O-RING	1	
27	4021000044	滚动轴承 GB297-32220	ROLLING BEARING GB297-32220	1	
28	4021000045	滚动轴承 GB297-32021	ROLLING BEARING GB297-32021	1	
29	3050900051	轴承隔套	BEARING COWL	1	
30	4030000046	骨架油封 HG4-692-PD130*160*12	FRAME OIL SEAL	1	
31	3050900048	垫片	BACKUP PLATE	1	
32	3050900049	油封端盖	OIL SEAL COVER	1	
33	4015000036	垫圈 GB93-8-65Mn	WASHER	6	
34	4011000195	螺栓 GB5783-M8*35EpZn-8.8	BOLT GB5783-M8*35EpZn-8.8	6	

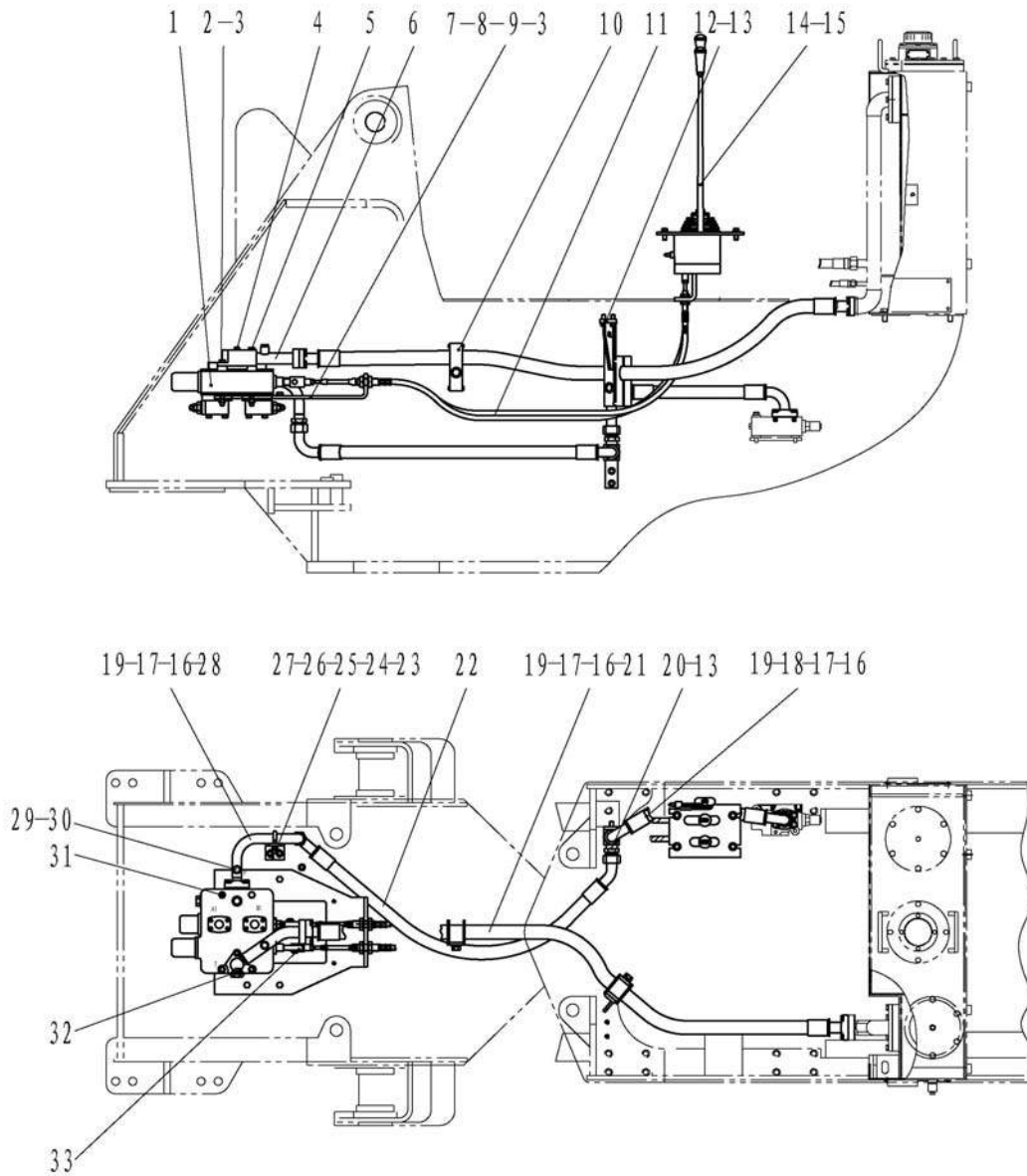
F 工作装置液压系统
IMPLEMENT HYDRAULIC SYSTEM

山东临工工程机械有限公司
SHANDONG LINGONG CONSTRUCTION MACHINERY CO., LTD

F1

液压操纵总成

HYDRAULIC CONTROL ASSEMBLY



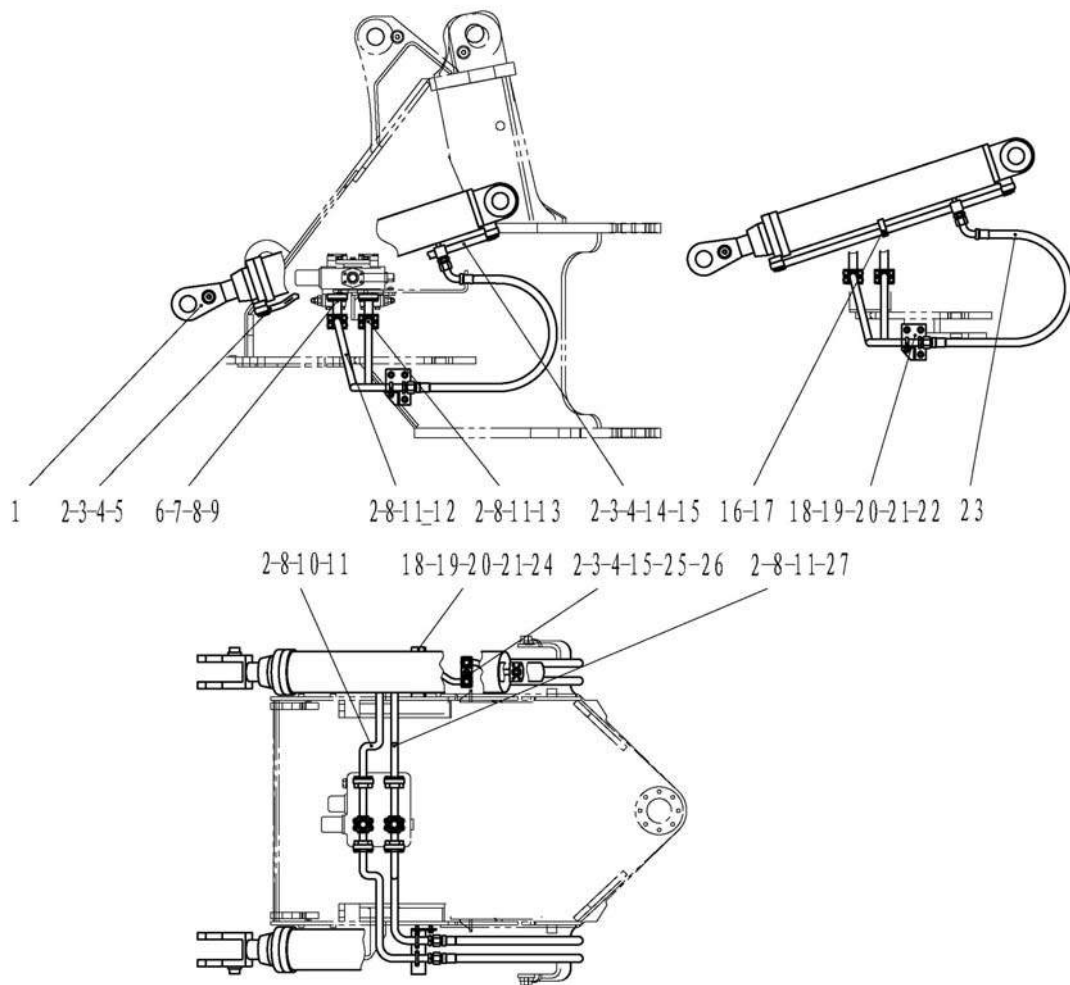
F1

序号	代号	名称		数量	备注
KEY	PART NO.	DESCRIPTION		QTY	REMARKS
1	4120000414	多路阀 DF-25B2-16	CONTROL VALVE DF-25B2-16	1	
2	4011000056	螺栓 GB5782-M12*145EpZn-8.8	BOLT GB5782-M12*145EpZn-8.8	1	
3	4015000168	垫圈 GB97.1-12EpZn-300HV	WASHER GB97.1-12EpZn-300HV	8	
4	4011000230	螺栓 GB16674-M10*65EpZn-8.8	BOLT GB16674-M10*65EpZn-8.8	1	
5	4011000058	螺栓 GB5782-M12*175EpZn-8.8	BOLT GB5782-M12*175EpZn-8.8	1	
6	29120005021	多路阀回油钢管	RENTURN TUBE OF MULTIPLE UNIT VALVE	1	
7	29120005031	多路阀固定板	MOUNTED PLATE OF MULTIPLE UNIT VALVE	1	
8	4011000477	螺栓 GB16674-M12*35EpZn-8.8	BOLT GB16674-M12*35EpZn-8.8	4	
9	4013000011	螺母 GB6170-M12EpZn-8	NUT GB6170-M12EpZn-8	8	
10	29120005041	管夹	CLAMPLE	2	
11	29120009781	操纵软轴	CONTROL AXIS	2	
12	29120005061	支架	FIX PLANK	1	
13	4011000560	螺栓 GB16674-M12*25EpZn-8.8	BOLT GB16674-M12*25EpZn-8.8	5	
14	4120001453	操纵机构 LG12-933CZJG21	OPERATING GEAR LG12-933CZJG21	1	
15	4011000474	螺栓 GB16674-M10*25EpZn-8.8	BOLT GB16674-M10*25EpZn-8.8	4	
16	4030000029	O形圈 GB3452.1-37.5*3.55G	O-RING GB3452.1-37.5*3.55G	4	
17	4041000056	分体法兰 LGB117-312550	FLANGE LGB117-312550	4	
18	29120005071	优先阀 EF 口胶管	EF PIL PIPE OF PRIORITY VALVE	1	
19	4011000475	螺栓 GB16674-M10*30EpZn-8.8	BOLT GB16674-M10*30EpZn-8.8	16	
20	29120005081	二通接头	DOUBLE-WAY CONNECTOR	1	
21	4041000706	软管 LGB163-012203	TUBE LGB163-012203	1	
22	29120005051	多路阀进油胶管	INPUT PIPE OF MULTIPLE UNIT VALVE	1	
23	29120005101	固定支架	FIX PLANK	1	
24	4011000556	U形螺栓 JB/ZQ4321-33Zn-Q235A.F	U-BOLT JB/ZQ4321-33Zn-Q235A.F	1	
25	4013000007	螺母 GB6170-M10EpZn-8	NUT GB6170-M10EpZn-8	2	
26	4015000162	垫圈 GB97.1-10EpZn-300HV	WASHER GB97.1-10EpZn-300HV	2	
27	4011000447	螺栓 GB16674-M10*20EpZn-8.8	BOLT GB16674-M10*20EpZn-8.8	2	
28	29120005091	多路阀进油钢管	INPUT TUBE OF MULTIPLE UNIT VALVE	1	
29	4041000774	螺塞 LGB135-01422	PLUG LGB135-01422	2	
30	4041000767	O形圈 LGB168-11124	O-RING LGB168-11124	2	
31	4011000263	螺栓 GB5782-M12*130EpZn-8.8	BOLT GB5782-M12*130EpZn-8.8	2	
32	4030000031	O形圈 GB3452.1-42.5*3.55G	O-RING GB3452.1-42.5*3.55G	1	
33	29120000081	铰接头	YOKE CONNECTOR	1	

F2

举升缸总成

LIFTING CYLINDER ASSEMBLY



F2

序号	代号	名称		数量	备注
KEY	PART NO.	DESCRIPTION		QTY	REMARKS
1	4120000867	动臂油缸 HSGF-125*70*771-1240	LIFTING CYLINDER HSGF-125*70*771-1240	2	
2	4030000279	O 形圈 GB3452. 1-25. 0*3. 55G	O-RING GB3452. 1-25. 0*3. 55G	8	
3	4011000309	螺栓 GB16674-M10*50EpZn-8. 8	BOLT GB16674-M10*50EpZn-8. 8	8	
4	4011000164	螺栓 GB16674-M10*35EpZn-8. 8	BOLT GB16674-M10*35EpZn-8. 8	8	
5	29130004021	左动臂小腔钢管	OIL TUBE	1	
6	29130008611	动臂联三通钢管	THREE-WAY OIL TUBE	2	
7	4030000026	O 形圈 GB3452. 1-32. 5*3. 55G	O-RING GB3452. 1-32. 5*3. 55G	2	
8	4011000475	螺栓 GB16674-M10*30EpZn-8. 8	BOLT GB16674-M10*30EpZn-8. 8	24	
9	4041000043	分体法兰 LGB117-310490	FLANGE LGB117-310490	2	
10	29130008671	阀至右动臂缸大腔钢管	BIG CHAMBER RIGHE TUBE OF LIFTING	1	
11	4041000137	分体法兰 LGB117-306400	FLANGE LGB117-306400	4	
12	29130008691	阀至左动臂缸大腔钢管	BIG CHAMBER LEFT TUBE OF LIFTING	1	
13	29130008711	阀至左动臂缸小腔钢管	SMALL CHAMBER RIGHE TUBE OF LIFTING	1	
14	29130004071	左动臂缸大腔钢管	OIL TUBE	1	
15	4011000447	螺栓 GB16674-M10*20EpZn-8. 8	BOLT GB16674-M10*20EpZn-8. 8	2	
16	4011000458	螺栓 GB16674-M8*20EpZn-8. 8	BOLT GB16674-M8*20EpZn-8. 8	4	
17	29130004081	管夹	CLAMPLE	2	
18	4011000488	螺栓 GB16674-M10*16EpZn-8. 8	BOLT GB16674-M10*16EpZn-8. 8	6	
19	4015000162	垫圈 GB97. 1-10EpZn-300HV	WASHER GB97. 1-10EpZn-300HV	8	
20	4011000490	U形螺栓 JB/ZQ4321-25Zn-Q235A. F	U-BOLT JB/ZQ4321-25Zn-Q235A. F	4	
21	4013000007	螺母 GB6170-M10EpZn-8	NUT GB6170-M10EpZn-8	8	
22	29130004091	固定支架 A	FIX PLANK A	1	
23	29130008951	动臂缸胶管	OIL PIPE OF LIFTING CYLINDER	4	
24	29130004111	固定支架 B	FIX PLANK B	1	
25	29130004121	右动臂大腔钢管	OIL TUBE	1	
26	29130004131	右动臂小腔钢管	OIL TUBE	1	
27	29130008731	阀至右动臂缸小腔钢管	SMALL CHAMBER RIGHE TUBE OF LIFTING	1	