

Compacted Structure & Flexible Operation



YX620 Wheel Loader

Energy Saving & Green Initiative

- ☑ Reasonable match of transmission system with low fuel consumption
- ☑ Powerful engine is adopted for energy saving and green initiative

Efficiency

- ☑ High travel speed at each gear
- ☑ Small turning radius and flexible operation
- ☑ Load sensing system is portable, speedy, accurate and flexible

Comfort & Convenience

- ☑ Separated transmission, easy for maintenance
- ☑ Reasonably distributed axles with good stability
- ☑ Comfortable cab with all-around clear visibility, ample space, good seal and low noise
- ☑ A/C is optional for better driving environment

Reliability & Durability

- ☑ Branded transmission system with reliable performance
- ☑ Upgraded hydraulic system and electric system
- ☑ Optimal designed structural components with large bearing capacity
- ☑ Thickened wear plate

YX620 Wheel Loader

Compacted Structure & Flexible Operation

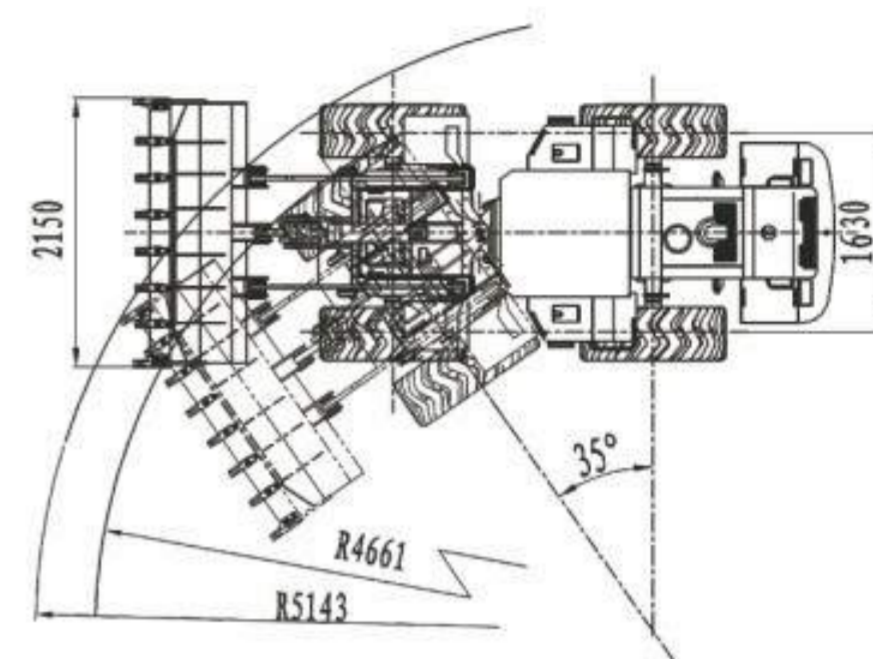
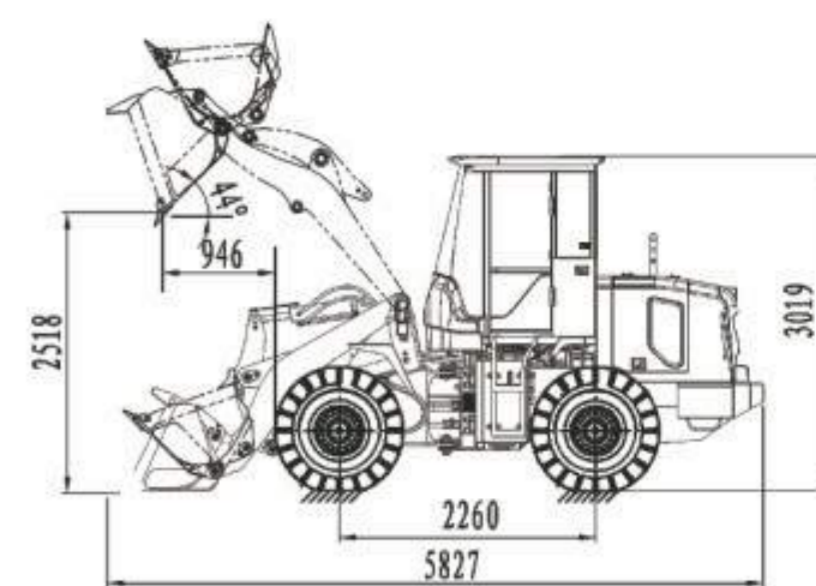
Energy Saving & Green Initiative



◆ Yuchai engine is equipped, featuring strong power, low fuel consumption and reliable performance.

Reliability & Durability

- ◆ Reinforced front and rear frames are with large bearing capacity. Reasonable distribution of overall load assures stability. And small turning radius enables the operation to be more flexible, which can adapt well to narrow work site.
- ◆ Reinforced drive axles are adopted for large bearing capacity and high reliability. Enlarged wheel tread and wheel base improve the overall stability, and adaptability to working conditions.



Technical Parameters

Bucket capacity	m ³	1.0	Total cycle time(lift, dump & lower)	s	≤9
Rated load	kg	2000	Dump height/Dump angle	mm/°	2518/44
Overall operating weight	kg	6200	Dump distance/Dump angle	mm/°	946/44
Max. traction force	kN	≥56	Min. ground clearance	mm	293
Max. breakout force	kN	≥58	Wheel base	mm	2260
Gradeability	°	30	Wheel tread	mm	1630
Min. turning radius(outer side of the bucket)	mm	5143	Departure angle	°	30
Min. turning radius(outer side of the tire)	mm	4661	Steering angle(left & right)	°	35
Overall dimension(standard configuration)		mm	5827*2150*3019		

Engine

Model - - - - - YC4D80-T20
 Type - - vertical, in-line, water-cooling, four-stroke, naturally aspirated
 Rated power - - - - - 58kW

Braking System

Service brake - - - - - air-over-oil caliper disc
 Parking brake (emergency brake) - - flexible shaft control drum brake

Tire

Specification - - - - 16/70-20-14PR
 Tread pattern - - - - general pattern

Drive System

Torque converter type - - - single stage, 3 elements
 Transmission type - - - - fixed shaft, power shift
 Gears - - - - - 2 forward, 2 reverse
 Main drive type - - - - spiral bevel gear, first reduction
 Hub reduction type - - - - planetary, first reduction
 Drive axle - - - - - dry type axle

Working Device Hydraulic System

Hydraulic system pressure - - - 17.5Mpa
 Control type - - - - - pilot control
 Oil pump type - - - - - gear pump

Steering System

Type - - - - - load sensing hydraulic
 Oil pump type - - - - - gear pump
 Oil pump displacement - - - - - 50ccr
 Working pressure - - - - - 16Mpa

Oil Capacity

Fuel tank - - - - - 140L
 Engine oil - - - - - 13L
 Transmission oil - - - - - 45L
 Hydraulic oil - - - - - 73L
 Gear oil (per axle) - - - - - 8L
 Antifreeze liquid - - - - - 24L

ENSIGN HEAVY INDUSTRIES CO., LTD.

Sales Hotline: +86-536-6298882 Fax: +86-536-6298797
 Email: export@ensighi.com Website: www.ensighi.com
 Add: No.1567, Ensign Street, Economic Development Zone, Changle, Weifang, Shandong, China Post Code: 262499

Under our policy of continuous improvement, we reserve the right to change specifications and designs without prior notice. The illustrations do not necessarily show the standard version of the machine.

Flexibility, Safety & Reliability



YX635 Wheel Loader

Reliability & Durability

- ☑ Reliable drive system
- ☑ Upgraded hydraulic system
- ☑ New design concept of electrical system
- ☑ Optimal designed structural components

Comfort & Convenience

- ☑ Cab space enlarged by 15%
- ☑ Low noise, shock-absorbed and dust proof cab
- ☑ Back-flipped engine hood, easy for maintenance
- ☑ Humanization-designed operating lever

Efficiency

- ☑ High travel speed
- ☑ Small turning radius and good adaptability to various working sites
- ☑ Short total cycle time with flexible movement

Safety

- ☑ Reinforced ROPS & FOPS cab
- ☑ Reliable braking system
- ☑ Safe and comfortable operating environment

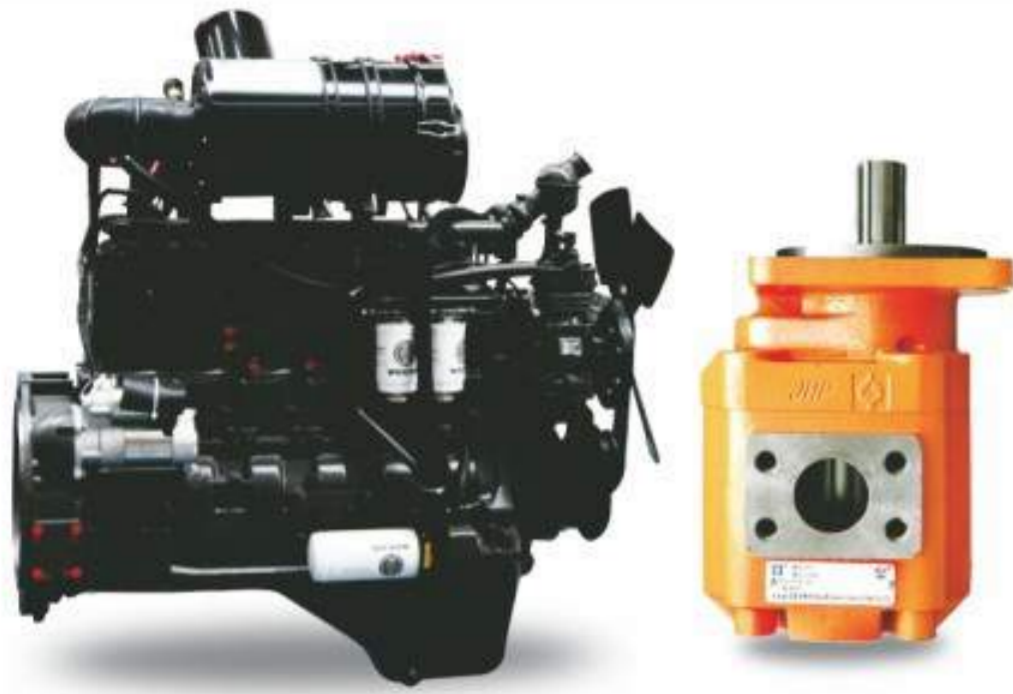
Energy Saving & Green Initiative

- ☑ Remarkable fuel and energy conservation
- ☑ Optimum radiation
- ☑ Low noise

YX635 Wheel Loader

Flexibility, Safety & Reliability

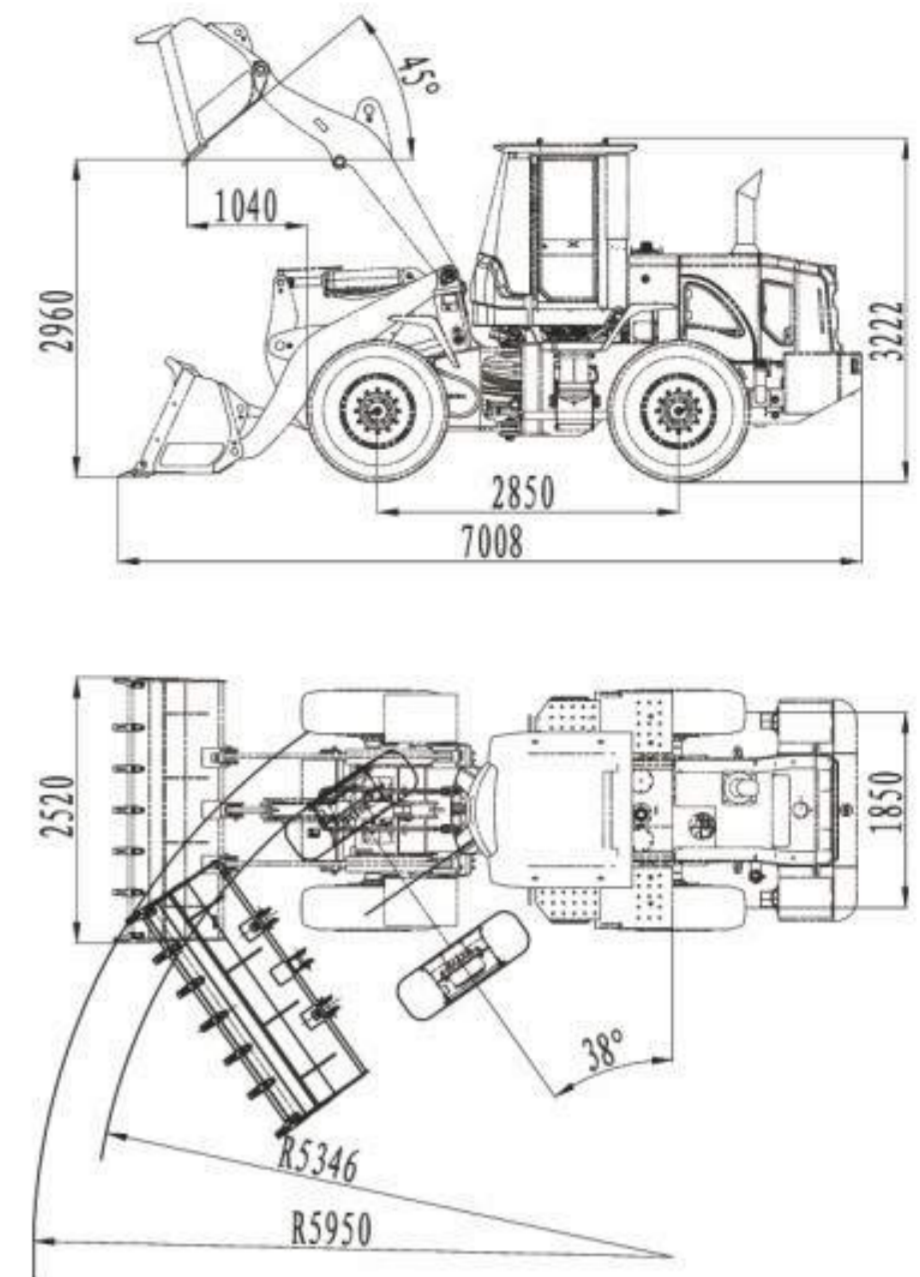
Energy Saving & Green Initiative



◆ Weichai WP6G125E23 engine is adopted for strong power, large torque reserve and excellent performance. Pumps with large displacement are equipped, which greatly increases working efficiency and decreases fuel consumption and noise, together with short total cycle time.

Reliability & Durability

- ◆ Structural components are of advanced design and manufacture, featuring excellent impact resistance, reliability and load capacity.
- ◆ Countershaft transmission is adopted, which is compact in structure. With high transmission efficiency, low failure rate, tiny impact of shifting and easy maintenance, it suits well to 3 MT loaders.



Technical Parameters

Bucket capacity	m ³	1.2~3.0(standard bucket 1.8)	Total cycle time(lift, dump & lower)	s	≤9.2
Rated load	kg	3000	Dump height/Dump angle	mm/°	2960/45
Overall operating weight	kg	10300	Dump distance/Dump angle	mm/°	1040/45
Max. traction force	kN	≥100	Min. ground clearance	mm	371.5
Max. breakout force	kN	≥100	Wheel base	mm	2850
Gradeability	°	30	Wheel tread	mm	1850
Min. turning radius(outer side of the bucket)	mm	5950	Departure angle	°	30
Min. turning radius(outer side of the tire)	mm	5346	Steering angle(left & right)	°	38
Overall dimension(standard configuration)		mm	7008*2520*3222		

Engine

Model - - - - - Weichai WP6G125E23
 Type - - in-line, water-cooling, four-stroke,
 direct injection, turbo charged
 Rated power - - - - - 92kW

Braking System

Service brake - - - - - air-over-oil
 caliper disc
 Parking brake
 (emergency brake) - - - - - flexible shaft
 caliper disc

Tire

Specification - - - - - 17.5-25
 Tread pattern - - - - - general pattern

Drive System

Torque converter type - - - single stage,
 3 elements
 Transmission type - - - - - fixed shaft,
 power shift
 Gears - - - - - 4 forward, 2 reverse
 Main drive type - - - - - spiral bevel gear,
 first reduction
 Hub reduction type - - - - - planetary,
 first reduction
 Drive axle - - - - - dry type axle

Working Device Hydraulic System

Hydraulic system pressure - - - - 16Mpa
 Control type - - - - - joystick
 Oil pump type - - - - - gear pump

Steering System

Type - - - - - load sensing hydraulic
 Oil pump type - - - - - gear pump
 Oil pump displacement - - - - - 100ccr
 Working pressure - - - - - 14Mpa

Oil Capacity

Fuel tank - - - - - 173L
 Engine oil - - - - - 16L
 Transmission oil - - - - - 42L
 Hydraulic oil - - - - - 100L
 Gear oil (per axle) - - - - - 7L
 Antifreeze liquid - - - - - 40L

ENSIGN HEAVY INDUSTRIES CO., LTD.

Sales Hotline: +86-536-6298882 Fax: +86-536-6298797
 Email: export@ensighi.com Website: www.ensighi.com
 Add: No.1567, Ensign Street, Economic Development Zone, Changle,
 Weifang, Shandong, China Post Code: 262499

Under our policy of continuous improvement, we reserve the right to change specifications and designs without prior notice. The illustrations do not necessarily show the standard version of the machine.

Strong Power and High Reliability with Comfort



YX636 Wheel Loader

Strong Power

- ☑ Long wheelbase with large breakout force and traction force
- ☑ Weichai WP6G125E22 engine with strong power
- ☑ Reinforced drive system

Comfort & Convenience

- ☑ Cab space enlarged by 15%
- ☑ Low noise, shock-absorbed and dust-proof cab
- ☑ Back-flipped engine hood, easy for maintenance
- ☑ Pilot control and brand new air conditioner design
- ☑ The bucket can set level automatically, and the set level angle can reach 3°

Reliability & Durability

- ☑ Upgraded hydraulic system
- ☑ New design concept of electrical system
- ☑ Optimal designed structural components

Safety

- ☑ Reinforced ROPS & FOPS cab
- ☑ Reliable braking system
- ☑ Safe and comfortable operating environment

Energy Saving & Green Initiative

- ☑ Remarkable fuel and energy conservation
- ☑ Optimum radiation
- ☑ Low noise

YX636 Wheel Loader

Strong Power and High Reliability with Comfort

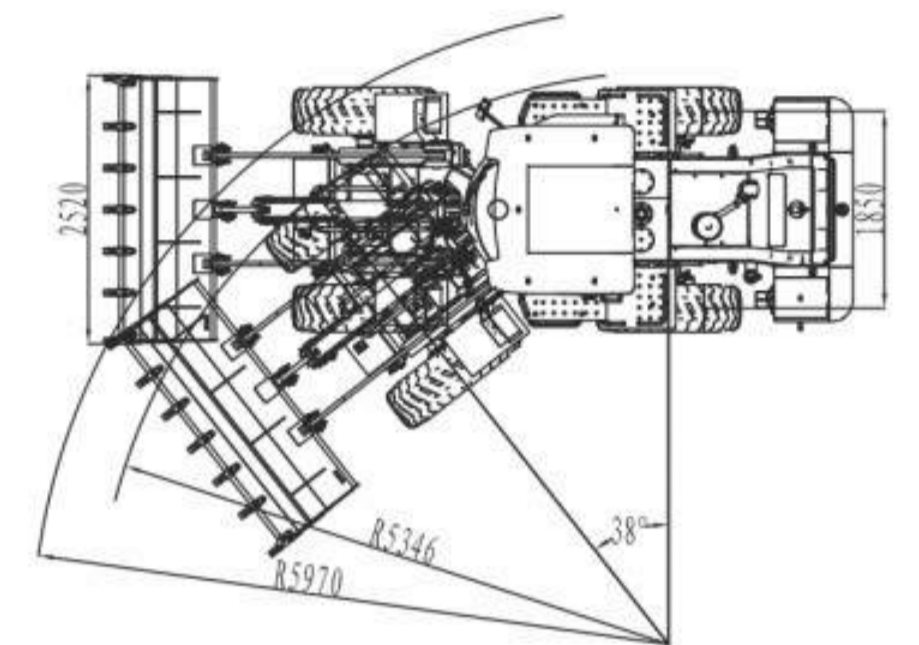
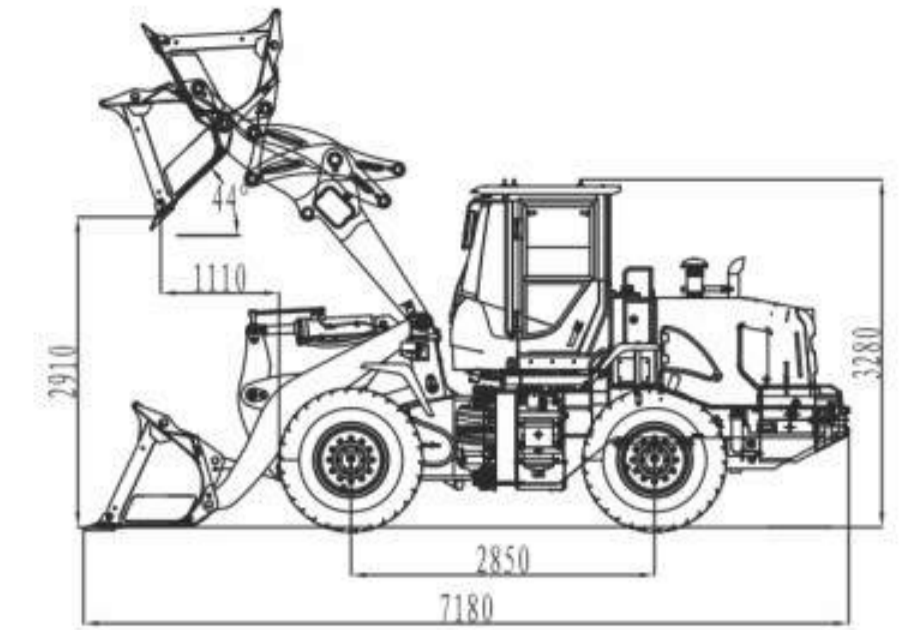
Energy Saving & Green Initiative



□ Weichai engine is adopted for strong power. Pumps with large displacement are equipped, which greatly increases working efficiency and decreases fuel consumption and noise, together with short total cycle time.

Reliability & Durability

□ Planetary transmission is adopted, with reasonable gear setting and compact structure, which is easy to operate and with high transmission efficiency, large structure rigidity, and long service life.
 ♦ Structural components are of advanced design and manufacture, featuring impact resistance, reliability and load capacity. Through tests in various bad working conditions, YX636 is proved to adapt to various working sites.



Technical Parameters

Bucket capacity	m ³	1.2~3.0(standard bucket 2.0)	Total cycle time(lift, dump & lower)	s	≤9.2
Rated load	kg	3500	Dump height/Dump angle	mm/°	2910/44
Overall operating weight	kg	10550	Dump distance/Dump angle	mm/°	1110/44
Max. traction force	kN	≥105	Min. ground clearance	mm	371.5
Max. breakout force	kN	≥92	Wheel base	mm	2850
Gradeability	°	30	Wheel tread	mm	1850
Min. turning radius(outer side of the bucket)	mm	5970	Departure angle	°	30
Min. turning radius(outer side of the tire)	mm	5346	Steering angle(left & right)	°	38
Overall dimension(standard configuration)		mm	7180*2520*3280		

Engine

Model - - - - - Weichai WP6G125E22
 Type - - six-cylinder,in-line, water-cooling, four stroke, direct injection, turbo charged
 Rated power - - - - - 92kW

Braking System

Service brake - - - - - air-over-oil caliper disc
 Parking brake (emergency brake) - - - manual pneumatic caliper disc

Tire

Specification - - - - - 17.5-25
 Tread pattern - - - - - general pattern

Drive System

Torque converter type - - single stage, 2-phase, 4 elements
 Transmission type - - - planetary power shift
 Gears - - - - - 2 forward, 1 reverse
 Main drive type - - - - spiral bevel gear, first reduction
 Hub reduction type - - - planetary, first reduction
 Drive axle - - - - - dry type axle

Working Device Hydraulic System

Hydraulic system pressure - - - - 16Mpa
 Control type - - - - - joystick
 Oil pump type - - - - - gear pump

Steering System

Type - - - - - load sensing hydraulic
 Oil pump type - - - - - gear pump
 Oil pump displacement - - - - - 63ccr
 Working pressure - - - - - 15Mpa

Oil Capacity

Fuel tank - - - - - 173L
 Engine oil - - - - - 18L
 Transmission oil - - - - - 59L
 Hydraulic oil - - - - - 90L
 Gear oil (per axle) - - - - - 7L
 Antifreeze liquid - - - - - 40L

ENSIGN HEAVY INDUSTRIES CO., LTD.

Sales Hotline: +86-536-6298882 Fax: +86-536-6298797
 Email: export@ensighi.com Website: www.ensighi.com
 Add: No.1567, Ensign Street, Economic Development Zone, Changle, Weifang, Shandong, China Post Code: 262400

Under our policy of continuous improvement, we reserve the right to change specifications and designs without prior notice. The illustrations do not necessarily show the standard version of the machine.



High Configuration with High Performance & Reliability

YX633 Wheel Loader

Reliability & Durability

- ☑ Equipped with Cummins engine with strong power and high reliability
- ☑ Electro-hydraulic control fixed shaft transmission
- ☑ Reinforced axle with large bearing capacity
- ☑ Imported waterproof & dustproof plug connectors and centralized fuse box are used in the electrical system, which ensures reliable performance
- ☑ Long wheel base ensures high reliability and overall stability
- ☑ Electrical system is in centralized control, which is easy for inspection and maintenance

Energy Saving & Green Initiative

- ☑ Cummins engine with strong power and low fuel consumption
- ☑ Torque converter is optimally matched, reducing the fuel consumption

Efficiency & Flexibility

- ☑ High travel speed at each gear
- ☑ Small turning radius with flexible operation
- ☑ Load sensing hydraulic steering system contributes to easy steering
- ☑ Pilot control is used for working device hydraulic system, which increases the maneuverability

Comfort & Convenience

- ☑ Full decorated cab with all-around clear visibility, ample space, good seal and low noise
- ☑ Combination & stepping type exquisite instrumental panel
- ☑ Three stage shock absorption system is used for comfortable operation

YX638 Wheel Loader

High Configuration with High Performance & Reliability

Energy Saving & Green Initiative

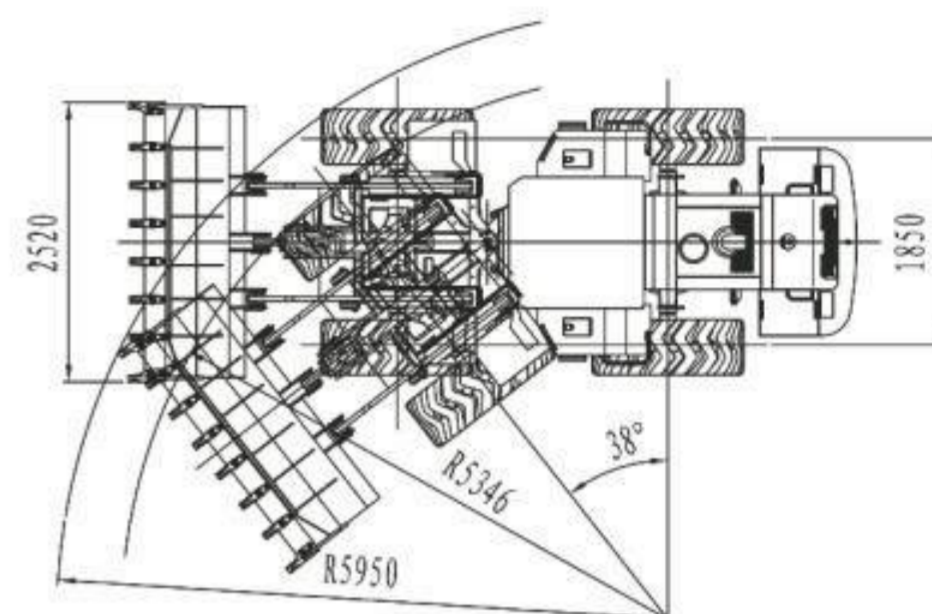
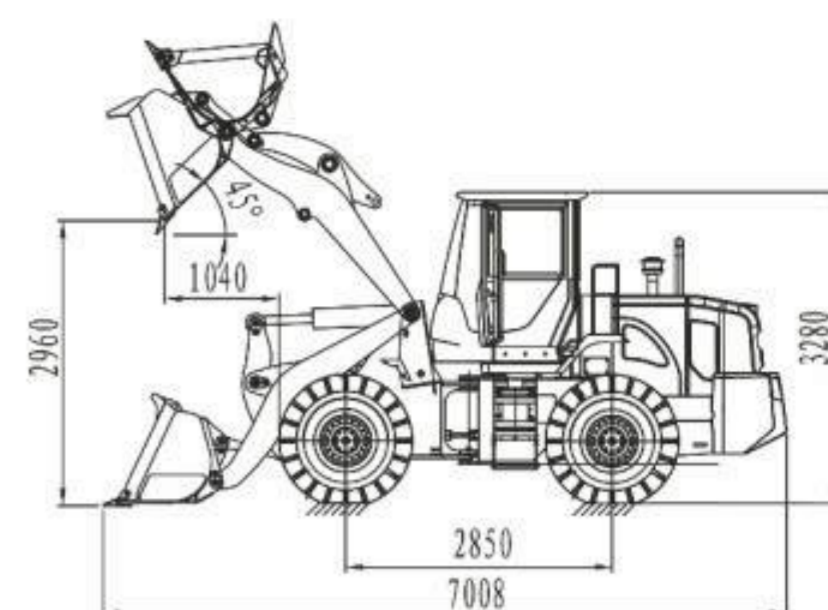


◆ Cummins engine is equipped for strong power and high reliability. Electro-hydraulic control fixed shaft transmission (4 forward gears and 3 reverse gears) is equipped for high transmission efficiency and comfortable operation.

Reliability & Durability

◆ Digital stepping type exquisite instrumental panel is equipped, which ensures real-time monitoring on the data and condition of the loader. Electrical system is centralize-controlled, which is convenient for testing and maintenance.

◆ The cab is full decorated and with all-around clear visibility and good seal. Three stage shock absorption system and new type shock absorption seat are adopted for better performance in shock absorption, which upgrades the comfort of operation.



Technical Parameters

Bucket capacity	m ³	1.2~3.0(standard bucket 1.8)	Total cycle time(lift, dump & lower)	s	≤9.2
Rated load	kg	3000	Dump height/Dump angle	mm/°	2960/45
Overall operating weight	kg	10500	Dump distance/Dump angle	mm/°	1040/45
Max. traction force	kN	≥105	Min. ground clearance	mm	371.5
Max. breakout force	kN	≥100	Wheel base	mm	2850
Gradeability	°	30	Wheel tread	mm	1850
Min. turning radius(outer side of the bucket)	mm	5950	Departure angle	°	30
Min. turning radius(outer side of the tire)	mm	5346	Steering angle(left & right)	°	38
Overall dimension(standard configuration)		mm	7008*2520*3280		

Engine

Model - - - - - Cummins 6BT5.9-C130

Type - - 6-cylinder, in-line, water-cooling, four stroke, direct injection, turbo charged

Rated power - - - - - 97kW

Braking System

Service brake - - - - - air-over-oil caliper disc

Parking brake (emergency brake) - - - manual pneumatic control drum brake

Tire

Specification - - - - - 17.5-25

Tread pattern - - - - - general pattern

Drive System

Torque converter type - - - single phase, 3 elements

Transmission type - - - fixed shaft electro-hydraulic control shift

Gears - - - - - 4 forward, 3 reverse

Main drive type - - - - - spiral bevel gear, first reduction

Hub reduction type - - - - - planetary, first reduction

Drive axle - - - - - dry type axle

Working Device Hydraulic System

Hydraulic system pressure - - - - 16Mpa

Control type - - - - - pilot control

Oil pump type - - - - - gear pump

Steering System

Type - - - - - load sensing hydraulic

Oil pump type - - - - - gear pump

Oil pump displacement - - - - - 63ccr

Working pressure - - - - - 15Mpa

Oil Capacity

Fuel tank - - - - - 173L

Engine oil - - - - - 18L

Transmission oil - - - - - 59L

Hydraulic oil - - - - - 90L

Gear oil (per axle) - - - - - 17L

Antifreeze liquid - - - - - 40L

ENSIGN HEAVY INDUSTRIES CO., LTD.

Sales Hotline: +86-536-6298882

Email: export@ensighi.com

Add: No.1567, Ensign Street, Economic Development Zone, Changle, Weifang, Shandong, China

Fax: +86-536-6298797

Website: www.ensighi.com

Post Code: 262499

Under our policy of continuous improvement, we reserve the right to change specifications and designs without prior notice. The illustrations do not necessarily show the standard version of the machine.

**Comfort & Durability
Security & Reliability**



YX646 Wheel Loader

Reliability & Durability

Heavy duty front & rear frames, long wheel base and matured transmission system increase the overall reliability. Upgraded radiation system enables the loader to adapt to worse working conditions.

High Efficiency & Energy Conservation

Power match is optimized and upgraded, improving the speed, breakout force and traction force, and increasing the working efficiency.

Driving Comfort

Stepping type high-end instrument panel increases human-machine interaction. Joystick operation is easy and flexible. Spacious cab also has good sound & shock insulation.

Convenient Maintenance

Back-flipped engine hood, tidy pipelines, and humanized design for maintenance contribute to convenience of daily maintenance.

YX646 Wheel Loader

Comfort & Durability
Security & Reliability

Comfort & Durability

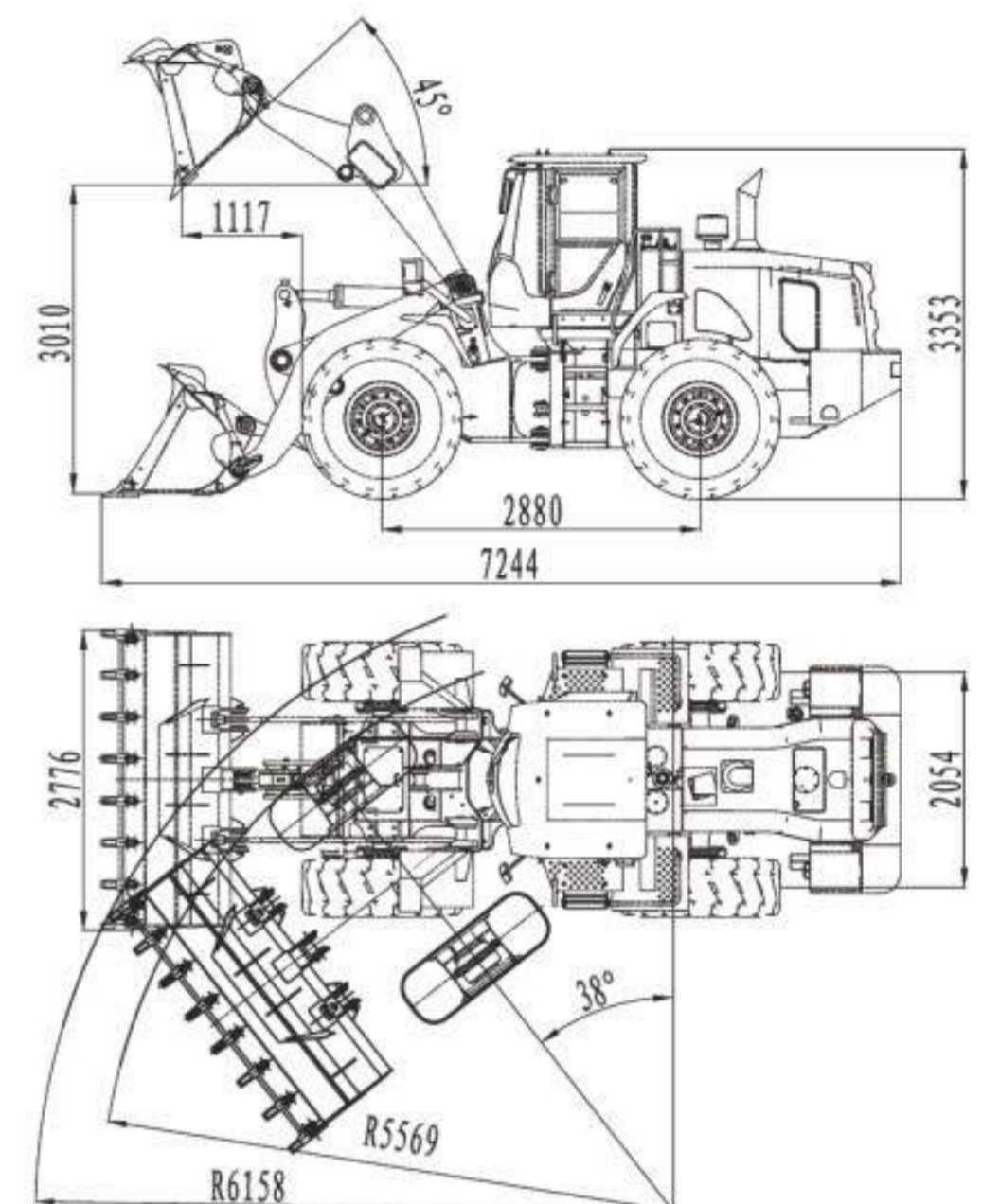


Spacious cab is with noise-reduction materials inside, which significantly reduces the noise. New type shock absorption structure is adopted to increase the comfort for driving. Steering column is adjustable. Stepping type instrument panel is of high-end. Oil level sensor is added for the convenience of checking oil easily.

Security & Reliability

Strengthened structural components is adopted including the front and rear frames, hinge joint and working devices, which prolongs the service life of the machine.

Layout of water radiator, hydraulic oil radiator and transmission oil radiator is reasonable. The new radiator ensures the reliability of the machine when works under high temperature.



Technical Parameters

Bucket capacity (standard)	m ³	2.3	Total cycle time(lift, dump & lower)	s	≤9
Rated load	kg	4000	Dump height/Dump angle	mm/°	3010(45°)
Overall operating weight	kg	13490	Dump distance/Dump angle	mm/°	1170(45°)
Max. traction force	kN	130	Min. ground clearance	mm	428.5
Max. breakout force	kN	123	Wheel base	mm	2880
Gradeability	°	30	Wheel tread	mm	2054
Min. turning radius(outer side of the bucket)	mm	6158	Departure angle	°	30
Min. turning radius(outer side of the tire)	mm	5569	Steering angle(left & right)	°	38
Overall dimension(standard configuration)		mm	7244*2776*3353		

Engine

Model - - - Weichai WP6G175E201
Shangchai SC8D170.1G2B1 (optional)
Type - - vertical, in-line, direct injection,
water-cooling, four-stroke, turbo charged
Rated power - - - 129kw(Weichai)
125kw(Shangchai)

Braking System

Service brake - - - - - air-over-oil
caliper disc
Parking brake (emergency brake) - - - manual pneumatic
caliper disc

Tire

Specification - - - - - 20.5-25
Tread pattern - - - - general pattern

Drive System

Torque converter type - - - - - single stage,
2-phase, 4 elements
Transmission type - - planetary power shift
Gears - - - - - 2 forward, 1 reverse
Main drive type - - - - spiral bevel gear,
first reduction
Hub reduction type - - - - planetary,
first reduction
Drive axle - - - - - dry type axle

Working Device Hydraulic System

Hydraulic system pressure - - - - 16Mpa
Control type - - - - - pilot control
Oil pump type - - - - - gear pump

Steering System

Type - - - - steady distributing hydraulic
Oil pump type - - - - - gear pump
Oil pump displacement - - - - - 63ccr
Working pressure - - - - - 16pa

Oil Capacity

Fuel tank - - - - - 190L
Engine oil - - - - - 17L
Transmission oil - - - - - 59L
Hydraulic oil - - - - - 120L
Gear oil (per axle) - - - - - 27L
Antifreeze liquid - - - - - 29L

ENSIGN HEAVY INDUSTRIES CO., LTD.

Sales Hotline: +86-536-6298882

Fax: +86-536-6298797

Email: export@ensighi.com

Website: www.ensighi.com

Add: No.1567, Ensign Street, Economic Development Zone, Changle, Weifang, Shandong, China

Post Code: 262400

Under our policy of continuous improvement, we reserve the right to change specifications and designs without prior notice. The illustrations do not necessarily show the standard version of the machine.

High Efficiency and Reliability, Energy Conservation and Comfort



YX656 Wheel Loader

Strong Power

- ☑ Long wheel base design contributes to large traction force
- ☑ The bearing capacity of drive axles is increased by 15%
- ☑ 18PR tires designed for mining environment
- ☑ High load ratio and large breakout force provide high efficiency.

Comfort & Convenience

- ☑ Cab space enlarged by 15%
- ☑ Low noise, shock-absorbed and dust proof cab
- ☑ Back-flipped engine hood, easy for maintenance
- ☑ Pilot control and brand new air conditioner design
- ☑ The bucket can set level automatically, and the set level angle can reach 3°

Reliability & Durability

- ☑ Upgraded hydraulic system
- ☑ New design concept of electrical system
- ☑ Optimal designed structural components

Safety

- ☑ Reinforced ROPS & FOPS cab
- ☑ Reliable braking system
- ☑ Safe and comfortable operating environment

Energy Saving & Green Initiative

- ☑ Remarkable fuel and energy conservation
- ☑ Optimum radiation
- ☑ Low noise

YX656 Wheel Loader

High Efficiency and Reliability,
Energy Conservation and Comfort

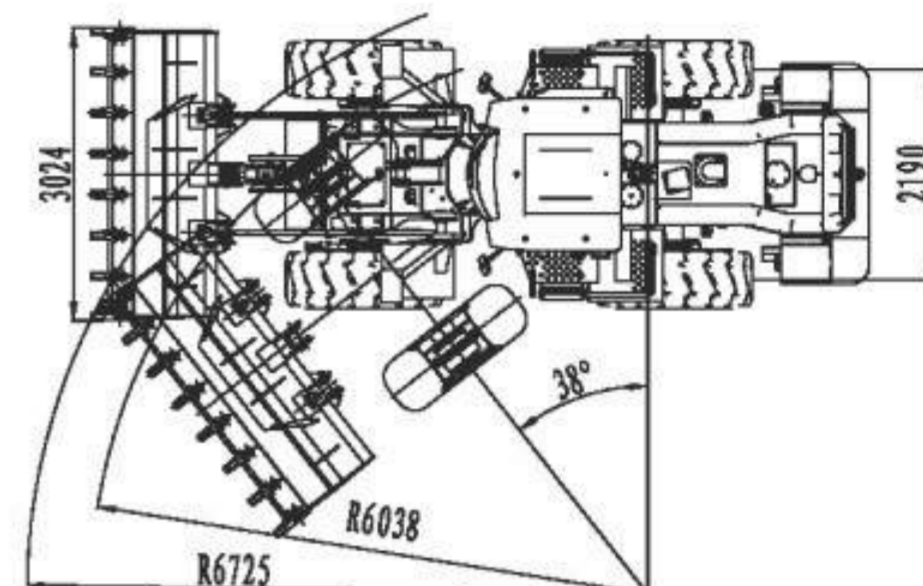
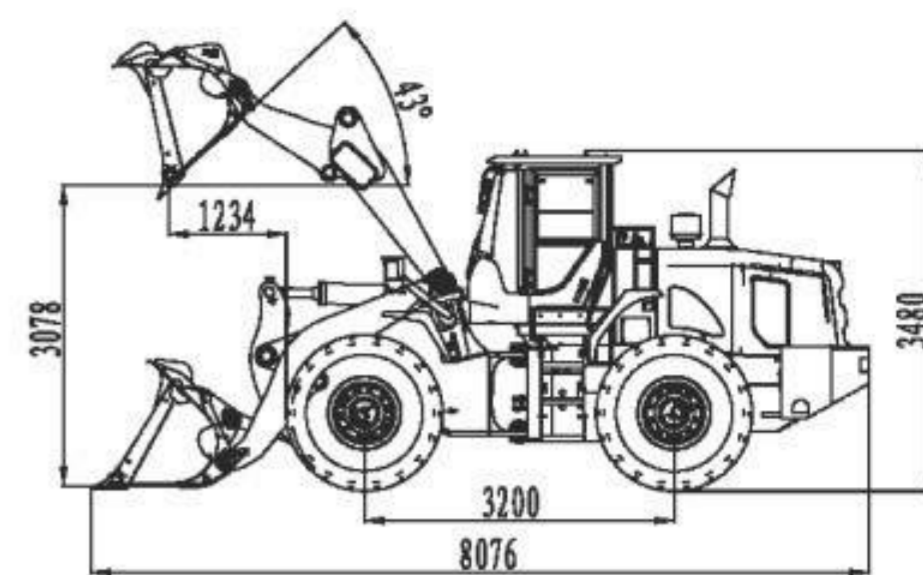
Energy Saving & Green Initiative



◆ Weichai low rpm engine and efficient torque converter optimize the power match. Low fuel consumption in common working conditions contributes to maximum energy transfer to transmission system and hydraulic system, which increases work efficiency.

Reliability & Durability

◆ Reinforced drive axles with reasonable load distribution provide excellent bearing capacity.
◆ Structural components are of advanced design and manufacture, featuring excellent impact resistance, reliability and load capacity. Through tests in various severe working conditions, YX656 is proved to adapt to various working sites even in mining serving conditions.



Technical Parameters

Bucket capacity	m ³	2.4~4.5(standard bucket 3.0)	Total cycle time(lift, dump & lower)	s	≤ 11
Rated load	kg	5000	Dump height/Dump angle	mm/°	3078/43
Overall operating weight	kg	17050	Dump distance/Dump angle	mm/°	1234/43
Max. traction force	kN	≥ 160	Min. ground clearance	mm	445
Max. breakout force	kN	≥ 191	Wheel base	mm	3200
Gradeability	°	30	Wheel tread	mm	2190
Min. turning radius(outer side of the bucket)	mm	6725	Departure angle	°	30
Min. turning radius(outer side of the tire)	mm	6038	Steering angle(left & right)	°	38
Overall dimension(standard configuration)		mm	8076*3024*3480		

Engine

Model - - - - - Weichai WD10G220E23
Type - - vertical, in-line, direct injection, water-cooling, four-stroke, turbo charged
Rated power - - - - - 162kW

Braking System

Service brake - - - - - air-over-oil caliper disc
Parking brake (emergency brake) - - - - - manual pneumatic caliper disc

Tire

Specification - - - - - 23.5-25
Tread pattern - - - - - general pattern

Drive System

Torque converter type - - - - - single stage, 2-phase, 4 elements
Transmission type - - - - - planetary power shift
Gears - - - - - 2 forward, 1 reverse
Main drive type - - - - - spiral bevel gear, first reduction
Hub reduction type - - - - - planetary, first reduction
Drive axle - - - - - dry type axles

Working Device Hydraulic System

Hydraulic system pressure - - - 17.5Mpa
Control type - - - - - joystick
Oil pump type - - - - - gear pump

Steering System

Type - - - - - load sensing hydraulic
Oil pump type - - - - - gear pump
Oil pump displacement - - - - - 80ccr
Working pressure - - - - - 16Mpa

Oil Capacity

Fuel tank - - - - - 300L
Engine oil - - - - - 20L
Transmission oil - - - - - 59L
Hydraulic oil - - - - - 176L
Gear oil (per axle) - - - - - 11L
Antifreeze liquid - - - - - 45L

ENSIGN HEAVY INDUSTRIES CO., LTD.

Sales Hotline: +86-536-6298882

Email: sales@ensighi.com

Add: No.1567, Ensign Street, Economic Development Zone, Changle, Weifang, Shandong, China

Fax: +86-536-6298797

Website: www.ensighi.com

Post Code: 262499

Under our policy of continuous improvement, we reserve the right to change specifications and designs without prior notice. The illustrations do not necessarily show the standard version of the machine.

High-level Configuration with Comfort and Reliability



YX657 Wheel Loader

Comfort

- ☑ New-type steel structure cab provides all-around clear visibility, high security and lower noise
- ☑ Long boom and bigger bucket have been used.

Reliability

- ☑ Dry type axle with excellent load capacity
- ☑ Full load sensing hydraulic steering system has been adopted for flexible steering
- ☑ Dual sealing is used for pipelines, providing high reliability
- ☑ Bottom & backside of bucket is reinforced for rock working conditions, while the main cutting edge is made of special wear-resisting material, increasing the abrasion resistance by 30%

High-level Configuration

- ☑ Cummins diesel engine is adopted for strong power and high reliability
- ☑ ZF transmission is equipped, featuring easy operation, flexibility and efficiency.
- ☑ Pilot controlled working devices system is adopted for easy operation and high efficiency

YX657 Wheel Loader

High-level Configuration with Comfort and Reliability

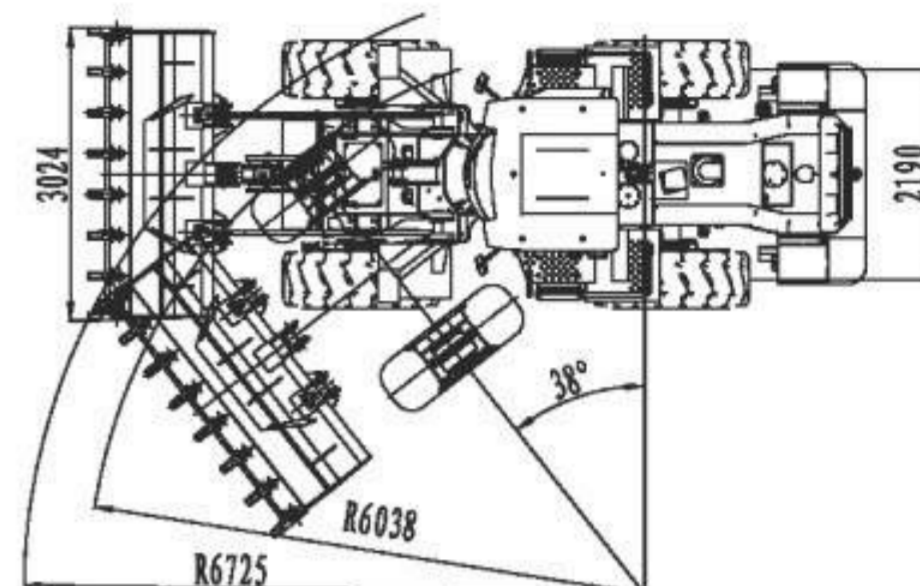
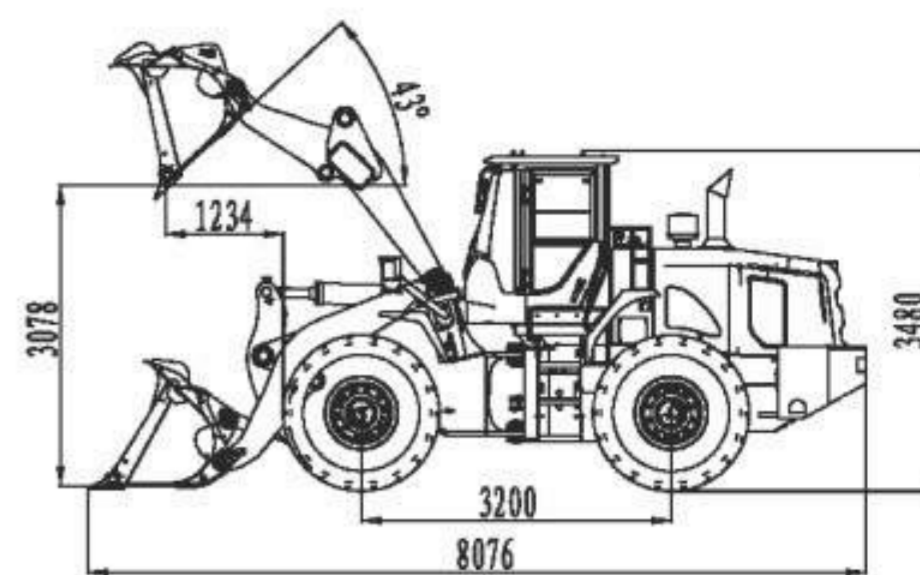
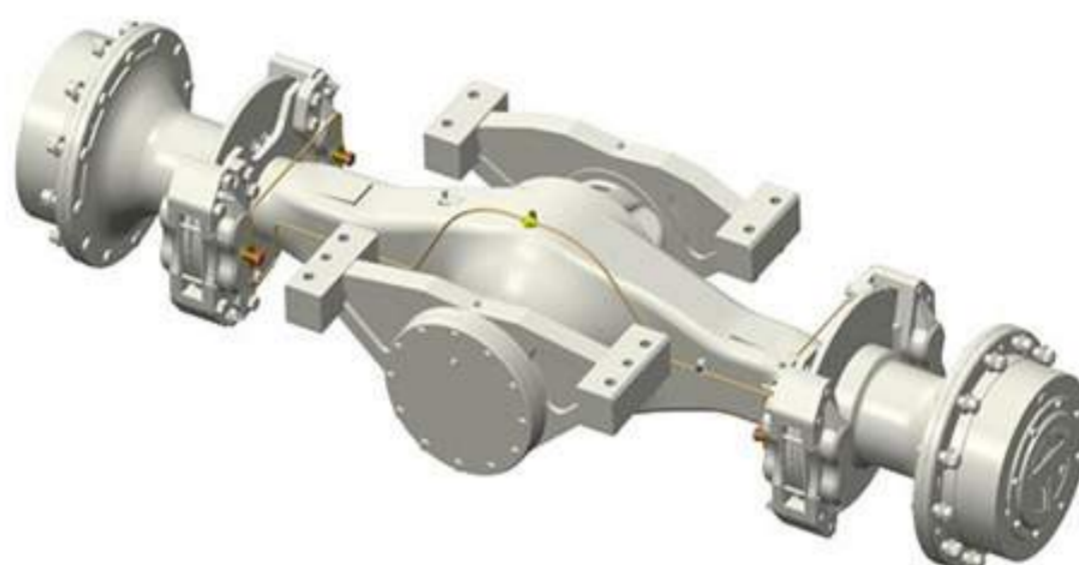
Strong Power & Green Initiative



- ◆ Cummins supercharged engine is adopted, featuring low fuel consumption, low noise, high reliability and strong power.
- ◆ ZF fixed shaft electro-hydraulic shifting transmission has the KD gear shifting function, featuring easy operation, flexibility and efficiency.

Reliability

The rear drive axle has an oscillating rack, which has high strength and good shock-absorption effect. This type of axle increases the stability of the whole loader.



Technical Parameters

Bucket capacity	m ³	2.4~4.5(standard bucket 3.0)	Total cycle time(lift, dump & lower)	s	≤ 11
Rated load	kg	5000	Dump height/Dump angle	mm/°	3078/43
Overall operating weight	kg	16560	Dump distance/Dump angle	mm/°	1234/43
Max. traction force	kN	≥ 160	Min. ground clearance	mm	445
Max. breakout force	kN	≥ 191	Wheel base	mm	3200
Gradeability	°	30	Wheel tread	mm	2190
Min. turning radius(outer side of the bucket)	mm	6725	Departure angle	°	30
Min. turning radius(outer side of the tire)	mm	6038	Steering angle(left & right)	°	38
Overall dimension(standard configuration)		mm	8076*3024*3480		

Engine

Model - - - Cummins 6CTA8.3-C215
Shangchai SC11CB220G2B1
Type - - vertical, in-line, direct injection, water-cooling, four-stroke, supercharged
Rated power - - - 160kW(Cummins)
162kW(Shangchai)

Braking System

Service brake - - - - - air-over-oil caliper disc
Parking brake (emergency brake) - - - manual pneumatic control drum brake

Tire

Specification - - - - - 23.5-25
Tread pattern - - - - - general pattern

Drive System

Transmission model - - - - - ZF4WG200
Torque converter type - - - single stage, three elements (single turbine)
Transmission type - - - - - fixed shaft
Gears - - - - - 4 forward, 3 reverse
Main drive type - - - - - spiral bevel gear, first reduction
Hub reduction type - - - - - planetary, first reduction
Drive axle - - - - - Dry type axle

Working Device Hydraulic System

Hydraulic system pressure - - - 17.5Mpa
Control type - - - - - pilot control
Oil pump type - - - - - gear pump

Steering System

Type - - - - - load sensing hydraulic
Oil pump type - - - - - gear pump
Oil pump displacement - - - - - 80ccr
Working pressure - - - - - 16Mpa

Oil Capacity

Fuel tank - - - - - 300L
Engine oil - - - - - 20L
Transmission oil - - - - - 59L
Hydraulic oil - - - - - 176L
Gear oil (per axle) - - - - - 27L
Antifreeze liquid - - - - - 45L

ENSIGN HEAVY INDUSTRIES CO., LTD.

Sales Hotline: +86-536-6298882

Fax: +86-536-6298797

Email: export@ensighi.com

Website: www.ensighi.com

Add: No.1567, Ensign Street, Economic Development Zone, Changle, Weifang, Shandong, China

Post Code: 262499

Under our policy of continuous improvement, we reserve the right to change specifications and designs without prior notice. The illustrations do not necessarily show the standard version of the machine.

**High Reliability
Energy Saving**



YX667 Wheel Loader

Energy Saving & Green Initiative

- ☑ Weichai engine is green initiative and energy saving
- ☑ Dual pump converging hydraulic system significantly reduces the fuel consumption and energy consumption

Comfort & Efficiency

- ☑ Hydraulic flow amplified steering system increases the steering comfort
- ☑ Full sealed space for engine and separated radiating air chamber greatly reduce the noise
- ☑ Comfortable cab and seat, with A/C as standard configuration

Reliability & Durability

- ☑ Pilot control is used for working device hydraulic system, which increases the maneuverability
- ☑ Extended wheel base and rear mounted fuel tank increase the stability and bearing capacity
- ☑ Electronic control fixed shaft transmission and heavy duty axles are with high reliability and easy for maintenance
- ☑ Double sealing structure is adopted for hydraulic pipeline, which improves the sealing performance of hydraulic system
- ☑ Reinforced front and rear frames with high strength and long service life
- ☑ Optimized working devices provide large breakout force and high load ratio

YX667 Wheel Loader

High Reliability
Energy Saving

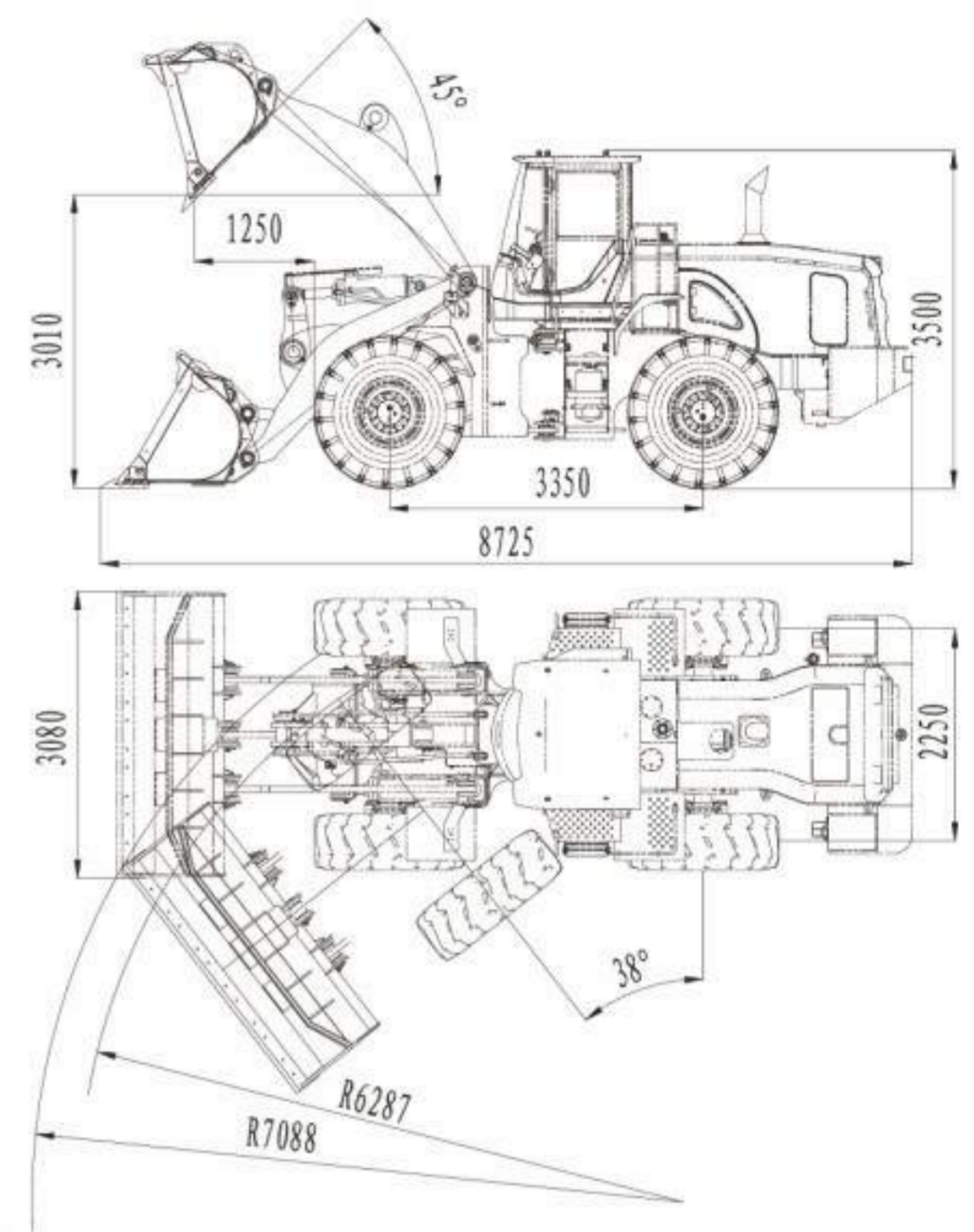
Energy Saving & Green Initiative



◆ Weichai engine and capable converter are optimally matched, which significantly increase traction and ensure excellent fuel economy. Shock absorption device is added when installing the engine, which further improves the sealing effect of the cab and reduces vibration and noise.

Strong Power & Reliability

- ◆ Extended wheel base and large counterweight contribute to larger bearing capacity. Rear mounted fuel tank is equipped for high stability and convenience of fuel filling.
- ◆ Electronic control fixed shaft transmission and heavy duty axles are with high reliability and easy for maintenance.



Technical Parameters

Bucket capacity (standard)	m ³	3.5	Total cycle time(lift, dump & lower)	s	≤9.8
Rated load	kg	6000	Dump height/Dump angle	mm/°	3010/45
Overall operating weight	kg	20700	Dump distance/Dump angle	mm/°	1250/45
Max. traction force	kN	≥186	Min. ground clearance	mm	445
Max. breakout force	kN	≥186	Wheel base	mm	3350
Gradeability	°	30	Wheel tread	mm	2250
Min. turning radius(outer side of the bucket)	mm	7088	Departure angle	°	30
Min. turning radius(outer side of the tire)	mm	6287	Steering angle(left & right)	°	38
Overall dimension(standard configuration)		mm	8725*3080*3500		

Engine

Model - - - - Weichai WD10G240E201
Type - - vertical, in-line, direct injection, water-cooling, four-stroke, turbo charged
Rated power - - - - - 178kW

Braking System

Service brake - - - - - air-over-oil caliper disc
Parking brake (emergency brake) - - - - manual pneumatic control drum brake

Tire

Specification - - - - - 23.5-25
Tread pattern - - - - general pattern

Drive System

Torque converter type - - single stage, 3 elements, centripetal
Transmission type - - - fixed shaft electronic control shift
Gears - - - - - 4 forward, 4 reverse
Main drive type - - - - spiral bevel gear, first reduction
Hub reduction type - - - planetary, first reduction
Drive axle - - - - - dry type axle

Working Device Hydraulic System

Hydraulic system pressure - - - 17.5Mpa
Control type - - - - - pilot control
Oil pump type - - - - - gear pump

Steering System

Type - - - - - flow amplification steering hydraulic
Oil pump type - - - - - gear pump
Oil pump displacement - - - - 100ccr
Working pressure - - - - - 16Mpa

Oil Capacity

Fuel tank - - - - - 305L
Engine oil - - - - - 20L
Transmission oil - - - - - 50L
Hydraulic oil - - - - - 185L
Gear oil (per axle) - - - - - 42L
Antifreeze liquid - - - - - 41L

ENSIGN HEAVY INDUSTRIES CO., LTD.

Sales Hotline: +86-536-6298882
Email: export@ensighi.com

Fax: +86-536-6298797

Website: www.ensighi.com

Add: No.1567, Ensign Street, Economic Development Zone, Changle, Weifang, Shandong, China
Post Code: 262499

Under our policy of continuous improvement, we reserve the right to change specifications and designs without prior notice. The illustrations do not necessarily show the standard version of the machine.