

## High-level Configuration with Comfort and Reliability



## YX657 Wheel Loader

### Comfort

- ▣ New-type steel structure cab provides all-around clear visibility, high security and lower noise
- ▣ Long boom and bigger bucket have been used

### Reliability

- ▣ Dry type axle with excellent load capacity
- ▣ Full load sensing hydraulic steering system has been adopted for flexible steering
- ▣ Dual sealing is used for pipelines, providing high reliability
- ▣ Bottom & backside of bucket is reinforced for rock working conditions, while the main cutting edge is made of special wear-resisting material, increasing the abrasion resistance by 30%

### High-level Configuration

- ▣ Cummins diesel engine is adopted for strong power and high reliability
- ▣ ZF transmission is equipped, featuring easy operation, flexibility and efficiency
- ▣ Pilot controlled working devices system is adopted for easy operation and high efficiency

**WAHA**  
EQUIPMENT

# YX657 Wheel Loader



High-level Configuration with Comfort and Reliability

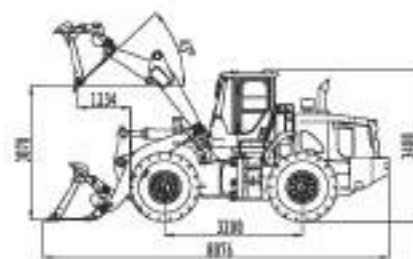
## Strong Power & Green Initiative



- Cummins supercharged engine is adopted, featuring low fuel consumption, low noise, high reliability and strong power.
- ZF fixed shaft electro-hydraulic shifting transmission has the KD gear shifting function, featuring easy operation, flexibility and efficiency.

## Security & Reliability

- New-type steel structure cab provides all-around clear visibility. Built-in structural framework contributes to high security. Full decorated interior cab increases the noise reduction effect.
- Waterproof design for key circuits and power switch design upgrade the overall service life and security. Digital instrument panel provides excellent human-machine interaction.



## Technical Parameters

Bucket capacity	m <sup>3</sup>	24-4.5(standard bucket 3.0)	Total cycle time(lift, dump & lower)	s	≤ 11
Rated load	kg	5000	Dump height/Dump angle	mm/°	3078/43
Overall operating weight	kg	16560	Dump distance/Dump angle	mm/°	1234/43
Max. traction force	kN	≥ 160	Min. ground clearance	mm	445
Max. breakout force	kN	≥ 191	Wheel base	mm	3200
Gradeability	°	30	Wheel tread	mm	2190
Min. turning radius(outer side of the bucket)	mm	6725	Departure angle	°	30
Min. turning radius(outer side of the tire)	mm	6038	Steering angle(left & right)	°	38
Overall dimension(standard configuration)			mm 8076*3024*3480		

### Engine

Model - - - Cummins 6CTA8.3-C215  
 Type - - vertical, in-line, direct injection, water-cooling, four-stroke, supercharged  
 Rated power - - - - 160kW(Cummins)

### Braking System

Service brake - - - - - air-over-oil caliper disc  
 Parking brake (emergency brake) - - - - manual pneumatic control drum brake

### Tire

Specification - - - - - 23.5-25  
 Tread pattern - - - - - general pattern

### Drive System

Transmission model - - - - - ZF4WG200  
 Torque converter type - - - single stage, three elements (single turbine)  
 Transmission type - - - - - fixed shaft  
 Gears - - - - - 4 forward, 3 reverse  
 Main drive type - - - - - spiral bevel gear, first reduction  
 Hub reduction type - - - - - planetary, first reduction  
 Drive axle - - - - - Dry type axle

### Working Device Hydraulic System

Hydraulic system pressure - - - 17.5Mpa  
 Control type - - - - - pilot control  
 Oil pump type - - - - - gear pump

### Steering System

Type - - - - - load sensing hydraulic  
 Oil pump type - - - - - gear pump  
 Oil pump displacement - - - - - 80ccr  
 Working pressure - - - - - 16Mpa

### Oil Capacity

Fuel tank - - - - - 300L  
 Engine oil - - - - - 20L  
 Transmission oil - - - - - 59L  
 Hydraulic oil - - - - - 176L  
 Gear oil (per axle) - - - - - 27L  
 Antifreeze liquid - - - - - 45L

Under our policy of continuous improvement, we reserve the right to change specifications and designs without prior notice. The illustrations / photos do not necessarily show the standard version of the machine.

[www.waha.co.za](http://www.waha.co.za)

Showroom: 578A 16th Road, <https://tractormanualz.com/> 28  
 Will - 076 037 9516 · Alec - 060 998 3798 · Darren - 083 250 8481

