

CHERY

RK404-A/RK454-A/RK504-A Wheeled Tractor

Parts Catalog

英文版

CHERY HEAVY INDUSTRY CO.,LTD.

<https://tractormanualz.com/>

RK404-A/RK454-A/RK504-A

Wheeled Tractor

Parts Catalogue

Chery Heavy Industry Co., Ltd.

<https://tractormanualz.com/>

Brief Introduction of the Content

This catalogue systematically introduces main part names, part codes, part use amount of related assemblies and the like of RK464-A, RK454-A, RK501-A wheeled tractor through parts illustrations and parts lists and is used in service, maintenance and repair.

Foreword

KK404-A, KK424-A, KK504-A wheeled tractor is one of series of leading products of Chery Heavy Industry Co., Ltd. This model has the characteristics of compact structure, convenience in control, flexible steering, great traction force, extensive use, convenience in maintenance, etc. can carry out various field works such as ploughing, tilling, sowing, harvesting, etc. together with corresponding agricultural implements and can be used for transportation work and fixed power such as power generation, irrigation and drainage, etc.

Along with the development of science and technology and use requirements, product structure will be improved and perfected constantly. Except for amendments or republication, catalogue content and annual structure may be slightly differently without prior notice. User shall not make any unjustifiable claim based on parts lists and parts illustrations in this catalogue. Please note.

As inadequacies are inevitable because the content of this catalogue is too much, we sincerely hope that the majority of users can put forward valuable opinions and suggestions for further improvement and perfection.

Chery Heavy Industry Co., Ltd. has the copyright, amendment and explanation rights of the parts catalogue. No entity or individual shall reprint, publish or duplicate this parts catalogue without the consent of Chery Heavy Industry Co., Ltd.

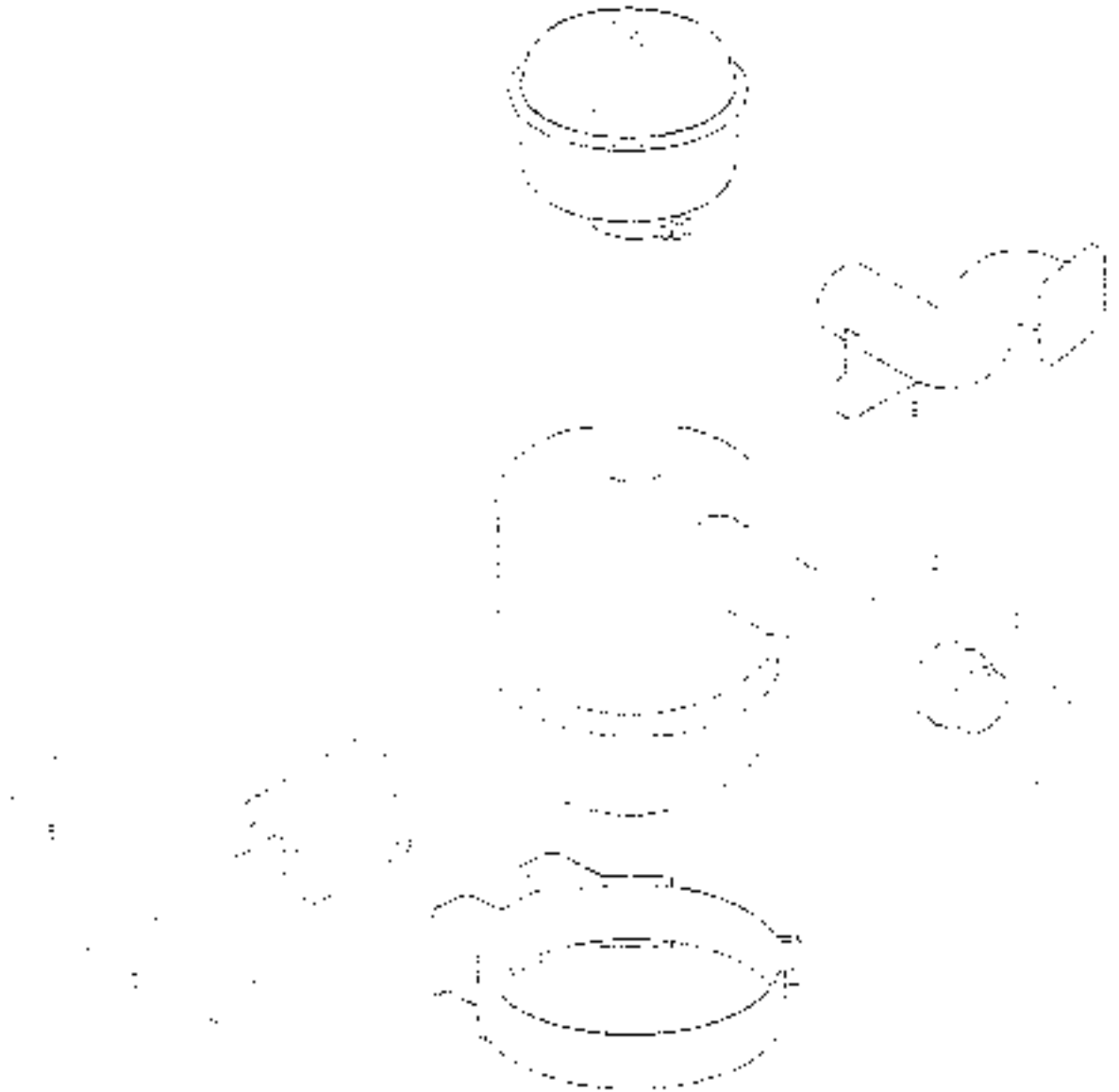
Chery Heavy Industry Co., Ltd.

Mar. 2015

Table of Contents

S.N	Code Name	Name and Specification of Parts	Applicable Model			Page
			RK404-A	RK454-A	RK504-A	
			RK404-D1H2 FG616MN-C	RK454-D1H2 FG616MN-C	RK504-D1H2 FG616MN-C	
1	RC460.11P.001	Air filter assembly (general)	✓	✓	✓	1
2	RC450.13P.001	Cooling system assembly	✓	✓	✓	5
3	RC400.20.001	Engine and control assembly	✓	✓	✓	-
4	RC400.21P9.001	Clutch assembly	✓	✓	✓	9
5	RC550.23C.001	Exhaust system assembly	✓	✓	✓	11
6	RC504.21.001	Front drive axle assembly	✓	✓	✓	17
7	RC504.22.001	Front wheel assembly 8.3-20 tire	✓	✓	✓	21
8	RC500.24B.001	Rear wheel assembly	✓	✓	✓	23
9	RC500.25C.001	Traction device assembly	✓	✓	✓	25
10	RC550.37P1.001	Transmission assembly	✓	✓	✓	37
11	RC454.38P1.001	Rear axle assembly	✓	✓	✓	51
17	RC450.39.001	Final drive assembly	✓	✓	✓	59
12	RC454.40A.001	Hydraulic steering assembly	✓	✓	✓	63
14	RC550.41P.001.2	Power output assembly	✓	✓	✓	65
15	RC454.43P1.001	Transfer case assembly	✓	✓	✓	71
16	RC450.43C.001	Brake assembly	✓	✓	✓	75
17	RC300.44C.001	Seat assembly	✓	✓	✓	77
18	RC550.45C.001	Floor and mudguard assembly	✓	✓	✓	79
19	RC550.46.001	Safety frame assembly	✓	✓	✓	83
20	RC550.47P.001	Engine hood installing assembly	✓	✓	✓	85
21	RK504.48E.001	Electrical equipment installation drawing	✓	✓	✓	87

RC400.L1P.001
Air Filter Assembly (optional)



RC400.11P.001
Air Filter Assembly (optional)

S.N	Code and Specification of Parts	Parts Name	Quantity	Remark
1	RC 550.11Q.1	air filter assembly	1	
2	TB T5576-1999	Hose clamp (80)	2	
3	RC 503A.11.103	Air hose	1	
4	GB 15783-2000	Bolt M10x25-Zn.D	2	
		Bolt M8x25-Zn.D	2	
5	GB T93-1987	Washer 10	2	
		Washer 8	4	
6	GB 1977-2002	Washer 10-200HV-Zn.D	2	
		Washer 8-200HV-Zn.D	2	
7	RC 503.11.020	air filter bracket	1	
8	GB 15783-2000	Bolt M8x20-Zn.D	2	
9	RC 400.11P.101-1	Air intake knif pipe	1	

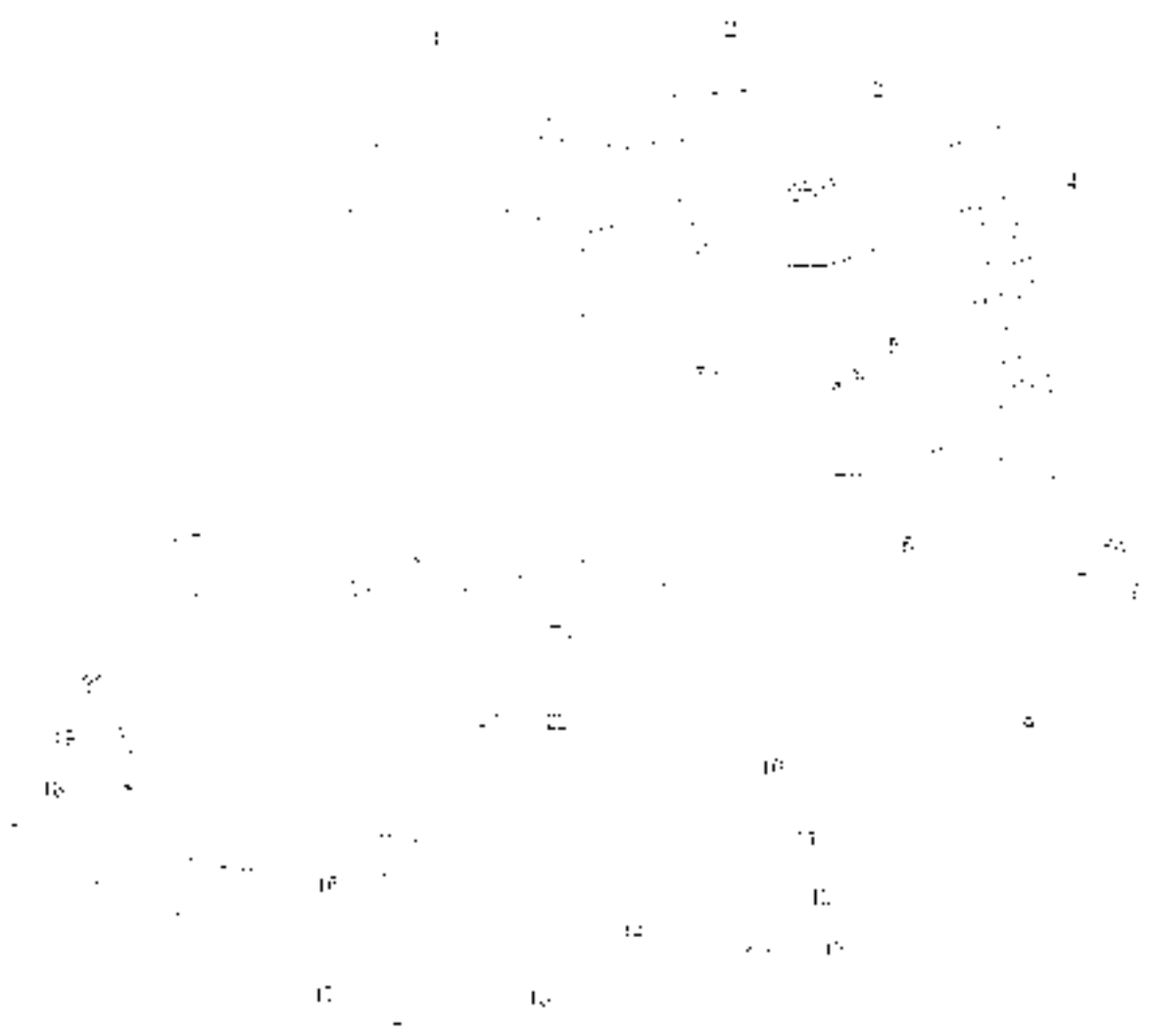
RC400.11C.00!
Air Filter Assembly



RC400.11C.001 Air Filter Assembly

S/N	Code and Specification of Part	Part Name	Quantity	Remark
1	D250.11C.010	air filter assembly	1	
2	D250.11C.030	Air filter bracket welding		
3	D250.11C.107	Air intake pipe	1	
4	D250.11C.108	Air intake hose	1	
5	GB T93	A type combination washer 8	2	HT200 Clean and send to 1-resisting hose
6	GB T93	Washer 8-AQP	2	
7	GB T4170	Nut M8	2	
8	GB T5184	Bolt M8x25-A11	2	
9	Q67689	B-type worm drive hose clip	2	

RC450.13P.001
Cooling System Assembly



RC450 13P.001 Cooling System Assembly

S.N.	Code and Specification of Parts	Parts Name	Quantity	Remark
1	RC450 13P.010	Radiator assembly	1	
2	IRC500 13.101	Water inlet pipe of water tank	1	
3	HB 18870	Hexe clamp band	4	
4	IRC500 13.107	Protecting net	2	Used for export certified tractor
5	GB T6170	Nut M8-A31	12	
6	IRC500 13.013	Protection net connecting pipe welding	4	
7	GB T 91	Washer 8-AOP	12	
8	GB 155783	Bolt M8x75-A3L	12	Used for export certified tractor
9	RC450 13.102	Water outlet pipe of water tank	1	
10	IRC500 13.112	Rubber backing block	1	
11	IRC500 13.107	Rubber backing block	2	
12	IRC500 13.106	Shim	2	
13	GB T 6178	Slotted nut M10-A31	1	
14	GB T 91	Self pier 2.0x40-AOP	2	
15	RC580 13.213A	Hood latch bracket Washer 8-200JA	2	
16	GB T 5783	M8X20-A3L	4	
17	RC450 13P.020	Water tank shim plate welding	1	
18	GB T 91	Washer 10-AOP	4	
19	GB 15925	Washer 10-AOP	4	
20	GB T55782	Bolt M 10x25-A31	4	
21	RC 500 13.201A	Link	1	
22	GB T 91	Washer 8 AOP	10	

RC400.20 001
Engine Control Mechanism Assembly



RC400 20.001 Engine Control Mechanism Assembly

S.N	Code and Specification of Parts	Parts Name	Quantity	Remark
1	RC 300.20.010	Foot throttle pedal assembly	1	
1.1	RC300 20.105	Pedal	1	
1.2	RC300 20.013	Pedal rocking arm welding-on unit	1	
1.3	RC300 20.106	Dampng cushion	1	
1.4	RC300 20.112	Throttle support	1	
1.5	GB T5783	Bolt M8x45-A33	1	
1.6	GB T9170	Nut M8-A2L	1	
1.7	RC300.20.111	Torsion spring	1	
1.8	GB T97.1	Washer 8-ACF	1	
1.9	RC300 20.110	Hand throttle rocking arm	1	
1.10	RC300 20.122	Fixing screw	1	
1.11	RC 300.20.011	Foot throttle rocking arm welding-on arm	1	
1.12	GB T879.1	Pin 5x22	1	
2	GB T5783	Bolt M8x30-A3L	6	
3	GB T97.1	Washer 8-ACF	6	
4	GB T82	Washer 8-ACF	6	
5	GB T6170	Nut M8-A2L	6	
6	RC300 20.103	Hand throttle pull bracket	1	
7	RC300 20.019A	Hand throttle assembly	1	
8	GB T97.1	Washer 8-ACF	1	
9	GB T318	Cross screw M6x10-A31	6	
10	RC 300.20.108	Hand throttle cover	1	
11	GB T819	Cross screw M8x30-A3L	3	
12	GB T879.1	Pin 5x20	1	
13	GB T93	Washer 6-ACF	3	
14	RC300 20.104	Dust proof cover pressing plate	1	
15	RC300.20.105	Foot throttle dust proof cover	1	
16	RC300.20.102	Foot throttle pull bracket	1	
17	RC400 20.013A	Engine stop pull assembly	1	
18	RC 650.20.014A	Foot throttle pull assembly	1	
19	GB T91	Pin 2x12	1	

RC400.21PR01 Clutch Assembly

S.N	Code and Specification of Parts	Part Name	Quantity	Remark
1	GB 1276-1994	Bearing 6201-2Z	1	
2	RC400.21B.011	Clutch subassembly	1	
3	GB 1573-2000	Bolt M10x45-10.9-Zn.D	4	
4	GB 193-1987	Washer 10	4	
5		Release bearing 996715	1	
6	RC400.21B.101	Release bearing seat	1	
7	RC300.21.102	Bearing seat return spring	2	
8	RC300.21.103	Release fork	1	
9	RC300.21.1.3	Clutch screw	1	
10	GB 15057-1993	Galvanized steel wire Z41.4x250	1	
11	GB T5783-2000	Bolt M10x40-Zn.D	1	
12	GB T6170-2000	Nut M10-Zn.D	2	
13	RC300.21.101	Clutch release fork shaft assembly	1	
14	GB 1887-2000	Axis pin B10x30-Zn.D	2	
15	GB T97.1-2002	Washer 10-200HV-Zn.D	2	
16	GB 197-2000	Pin 3 2x16	2	
17	RC300.43.108	Frame fork of link	1	
18	RC300.21.11-91	Link	1	
19	GB 16770-2000	Nut M10x10-Zn.D	1	
20	RC300.13.113	Full rod rear fork	1	
21	RC300.212.012A	Clutch pedal assembly	1	
21.1	RC300.21P.018.1	Clutch pedal rocker arm welding	1	
21.2	RC300.21R.111.1	Clutch pedal	1	
21.3	GB T6170-2000	Nut M8-Zn.D	2	
21.3	GB 193-87	Washer 8	2	
21.5	GB 127-1985	Reamer 16hM8x30	2	
21.6	RC300.21.111	Bus	1	
22	RC300.21P.210	Clutch return spring	1	
23	GB 193-1987	Washer 8	1	
24	RC300.21.109	Main clutch spring hanger	1	
25	GB T6170-2000	Nut M8-Zn.D	2	
26	RC300.21P.0150	Return spring bracket welding	1	

RC550.22C.001
Exhaust System Assembly

S.N.	Code and Specification of Parts	Parts Name	Quantity	Remarks
1	RC 550.22C.001	Muffler assembly	1	
2	RC550.22C.104	Nameplate of muffler	1	Aluminum sheet 10-0.50
3	RC 550.22C.101	Muffler	1	
4	RC 550.22C.102	Muffler cover	1	Steel wire net 1.0 (219#)
5	RC 550.22C.103	Air outlet pipe cover	1	Steel wire net 1.0 (219#)
6	RC 550.22X.111	Exhaust belt pipe	1	Borrowed
7	RC 300.22.151	Protection net 1	1	Borrowed
8	RC 300.22.152	Protection net 2	1	Borrowed
9	RC 300.22.090	Combined sealing packing	2	Borrowed
10	GB 15-85	Bolt M8 X 16-A31	1	
11	GB 15785	Bolt M10 X 30-A31	4	
12	GB 15783	Bolt M10 X 40-A31	2	
13	GB 76170	Nut M10-A21	4	
14	GB 792	Washer 8-AOP	4	
15	GB 793	Washer 10-AOP	8	
16	GB 797.1	Washer 8-AOP	4	
17	GB 797.1	Washer 10-AOP	4	

RC504.31.004
Front Driving Axle Assembly (1)



RC504.31.001
Front Driving Axle Assembly (1)

S.N	Code and Specification of Parts	Parts Name	Quantity	Remark
1	RC504.31	Front driving axle sub-assembly	1	
2	RC404.31.01	Bracket	1	
3	GB 15782-2000	Bolt M18x110-Zn.D	6	
4	GB 193-1987	Washer 16	6	
5	GB 15783-2000	Bolt M14x45-Zn.D	8	
6	GB 193-1987	Washer 14	8	

RC504.31.001
Front Driving Axle Assembly (2)

Main reduction gearbox case



RC504.31.001
Front Driving Axle Assembly (7)

S.N.	Code and Specification of Parts	Parts Name	Quantity	Remark
1	GB T2783	Hexagon head bolt - full thread M12x45	4	
2	GB 187	Standard spring washer 12	4	
3	RC304.31F.124	Connecting cap	1	
4	GB 15977.1	Oil seal FBS100512	1	
5	RC304.31F.125	Oil seal bush	1	
6	GB T278	Angular ball bearing 607.3	2	
7	GB 1893.1	Clutch for Lode - A type 100	2	
8	RC304.31F.128	Plan washer	1	
9	RC304.31F.122	Gear	1	
10	JB 1-940.1	Oil cup M10x1	2	
11	QYXF3-1992	Screw plug Z3.5	1	
12	GB 11160.2	Oil leveler M10	1	
13	KC304.31F.121	Axle shaft housing	1	
14	KC304.31F.126	Gear	1	
15	GB 1276	Angular ball bearing 5120	1	
16	KC304.31F.128	Spine shaft	1	
17	KC304.31F.127	Casing pipe	1	
18	RC304.31F.123	Adjusting shim	Group 1	
19	RC304.31F.130	Adjusting shim	Group 1	
20	GB 16156	Oil type hexagon nut - fine thread M14x1.5	6	
21	RC304.31F.205	Washer	8	
22	RC304.31F.117	Front drive shaft	1	
23	RC304.31F.115	Knocking bolt	8	
24		Fluorine oil seal	2 pairs	
25	GB 15753	Hexagon head bolt - full thread M16x35	8	
26	GB T95	Standard spring washer	8	
27	RC304.31F.107	Big end cover	1	
28	RC304.31F.196	Adjusting shim	Group 1	

Main reduction gearbox case



RC504.31.001
From Driving Axle Assembly (2) Continued

S.N	Code and Specification of Parts	Parts Name	Quantity	Remarks
29	GB 3475.1	O-type rubber seal ring 22x25.5x2	1	
30	GB T276	Annular ball bearing 6310	1	
31	RC304.31F 101	Washer	2	
32	RC304.31F 108	Big end gear	1	
33	GB T276	Annular ball bearing 6310	1	
34	RC 304.31F 113	Adjusting shim	2	
35	RC504.31F 110	End spline shaft	1	
36	RC304.31F 111	Bush 50x30	1	
37	GB T301	Thrust ball bearing 8107	1	
38	RC 304.31F 105	Screw plug	2	
39	RC 304.31F 106	Washer	2	
40	GB T6170	L-type hexagon nut M16	1	
41	GB T5785	Hexagon head bolt - full thread M16x30	1	
42	RC 304.31F 107	Left terminal case	1	
43	RC 304.31F 112	Small end gear	1	
44	GB T276	Annular ball bearing 6308	1	
45	GB T895.1	Chisel tip for hole - A type 90°	1	
46	RC304.31F 022	Seal cover	1	
47	GB T895.1	Chisel tip for hole - A type 90°	1	

RC504.31.001
Front Driving Axle Assembly (3)



RC504.31.001
Front Driving Axle Assembly (3)

S/N	Code and Specification of Parts	Parts Name	Quantity	Remark
1	GB3452.1	O-type rubber seal ring 110x3.50	2	
2	RC304.31F.191	Positioning disc	1	
3	RC304.31F.129	Reducing gearbox case	1	
4	RC304.31F.136	Washer	1	
5	RC304.31F.126	Screw plug	1	
6	GB1119	Cylindrical pinB12x22		
7	GB3452.1	O-type rubber seal ring 60x2.650	1	
8	RC304.31F.131	Driving spiral bevel gear shaft	1	
9	GB1297	Conical roller bearing 32207		
10	RC304.31F.132	Spacer sleeve	1	
11	RC304.31F.133	Adjusting sleeve	1	
12	GB T893.1	Catch nut hole A type 77	1	
13	GB T9877.1	Oil seal FH 50728D	1	
14	RC304.31F.134	Oil seal seat	1	
15	GB3452.1	O-type rubber seal ring 34.5 x 3.50	1	
16	RC304.31F.104	Copper waxing	3	
17	GB 17510	Small ring 375x1.5		
18	GB 1375	Lock washer 20 for round nut	1	
19	RC304.31F.138	Big spiral bevel gear for central transmission	1	
20	GB 1216	Annular ball bearing 6216	2	
21	RC304.31F.137	Differential right bearing	1	
22	GB 1119	Cylindrical pin B8x20	2	
23	RC304.31F.135	Spacer	2	
24	RC304.31F.111	Semi axle gear	2	
25	RC304.31F.140	Washer	2	
26	RC304.31F.145	Planet gear	2	
27	RC304.31F.147	Axis pin	1	
28	RC304.31F.141	Stop pin	1	

RC504.31.001
Front Driving Axle Assembly (3) Continued

S.N.	Code and Specification of Parts	Parts Name	Quantity	Remark
29	RC304.31F.136	Differential left housing	1	
30	GB T93	Standard spring washer 10	6	
31	GB T70	Inside hexagonal fillister head screw M10x70	6	

RC504.31.001
Front Driving Axle Assembly (4)

Main reduction gearbox case



RC504-31.001
Front Driving Axle Assembly (4)

S.N	Code and Specification of Parts	Parts Name	Quantity	Remark
1	C.B. 15783	Hexagon head bolt - full thread M12x40	4	
2	C.B. 194	Standard spring washer 12	4	
3	RC504-313-124	Component cap	1	
4	CB T9877-1	Oil seal FB8007512	1	
5	RC504-31E-125	Oil seal bush	1	
6	C.B. 1276	Annular ball bearing 6015	2	
7	CB 15931	Clutch for hole - A type 135	2	
8	RC504-313-188	Plan washer	1	
9	RC504-313-122	Gear	1	
10	IB 17940-1	Oil ring M110x7	1	
11	QYNF70-1992	Screw plug Z2 8'	1	
12	C.B. T1160.2	Oil leveler A10	1	
13	RC504-313-121	Axle shaft housing	1	
14	RC504-313-126	Gear	1	
15	CB 1276	Annular ball bearing 6309	1	
16	RC504-313-145	Spring shaft	1	
17	RC504-31E-127	Casing pipe	1	
18	RC504-311-123	Adjusting shunt	Group 1	
19	RC504-311-120	Adjusting shunt	Group 1	
20	RC504-31E-119	End splae shaft	1	
21		Floating oil seal	2 parts	
22	RC504-313-111	Bush 55x30	1	
23	CB 1307	Thrust ball bearing 8107	1	
24	RC504-313-105	Screw plug	1	
25	RC504-313-106	Washer	2	
26	RC504-313-146	Right terminal case	1	
27	CB 16170	1 type hexagon nut M15	1	
28	CB 15783	Hexagon head bolt Full thread M12x40	1	

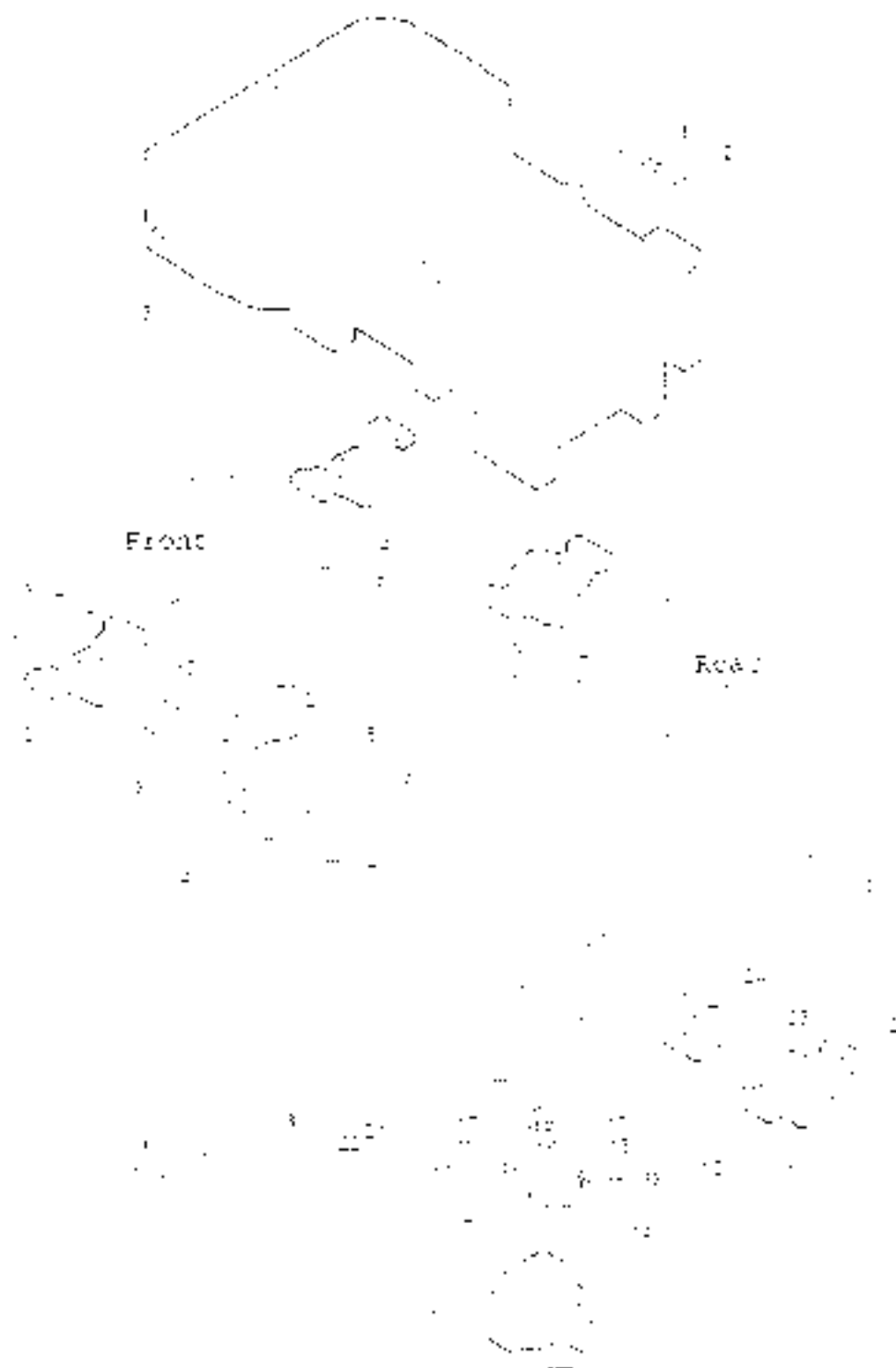
RC504.31.001
Front Driving Axle Assembly (4) Continued

S. N.	Code and Specification of Parts	Parts Name	Quantity	Remark
29	RC304.31F.112	Small end gear	1	
30	GB T276	Annular ball bearing 6308	1	
31	RC304.31F.113	Adjusting shim	2	
32	GB 1893.1	Clutch for hole - A type 90	1	
33	RC304.31F.022	Seal cover	1	
34	GB T583.3	Clutch for hole - A type 100	1	
35	GB 1226	Annular ball bearing 6210	1	
36	RC304.31F.116	Big end gear	1	
37	RC304.31F.114	Washer	2	
38	GB 1228	Annular ball bearing 7310	1	
39	GB 1345.1	O-type rubber seal ring 236x8 3G	1	
40	RC304.31F.180	Adjusting shim	Group 1	
41	RC304.31F.107	Big end cover	1	
42	GB 193	Standard spring washer	8	
43	GB 15785	Hexagon head bolt full thread M5x25	8	
44	RC304.31F.117	Front drive shaft	1	
45	RC304.31F.115	Knurling bolt	6	
46	RC304.31F.205	Washer	6	
47	GB 16376	O-type hexagon nut full thread M14x1.5	6	

RC304.31 001
Front Driving Axle Assembly (5)

S.N.	Code and Specification of Parts	Parts Name	Quantity	Remark
1	RC304.31F.160	Dust cap	1	
2	GB T7940.1	Oil cup M16x1	1	
3	RC304.31F.165	Fixing nut	1	
4	GB 1893.1	Pin for hole - A type 35	1	
5	GB 19765	Radial, single bearing G12025	1	
6	RC304.31F.166	Outer rod bearing	1	
7	RC304.31F.167	Spacer sleeve	1	
8	RC304.31F.168	Hexagon slotted nut	3	
9	GB 197	Split pin 3.2x40	3	
10	RC304.31F.027	Dust proof leather boot	1	
11		Eye clamp 50	1	
12	RC304.31F.029	Hydraulic cylinder	1	
13	RC304.31F.026	Dust-proof bark pocket	2	
14	RC304.31F.174	Left ball pin seat	1	
15	RC304.31F.175	Ball pin gasket	2	
16	RC304.31F.177	Ball pin	2	
17	RC304.31F.180	Ball pin cover	2	
18	RC304.31F.179	Gasket	2	
19	RC304.31F.183	Adjusting shim	Group 2	
20	GB 1893.1	Pin for hole - A type 37	2	
21	GB 16175	Hexagon thin nut - fine thread M20x1.5LH	1	
22	RC304.31F.175	Link	1	
23	GB 16175	Hexagon thin nut - fine thread M20x1.5	1	
24	RC304.31F.176	Right ball pin seat	1	

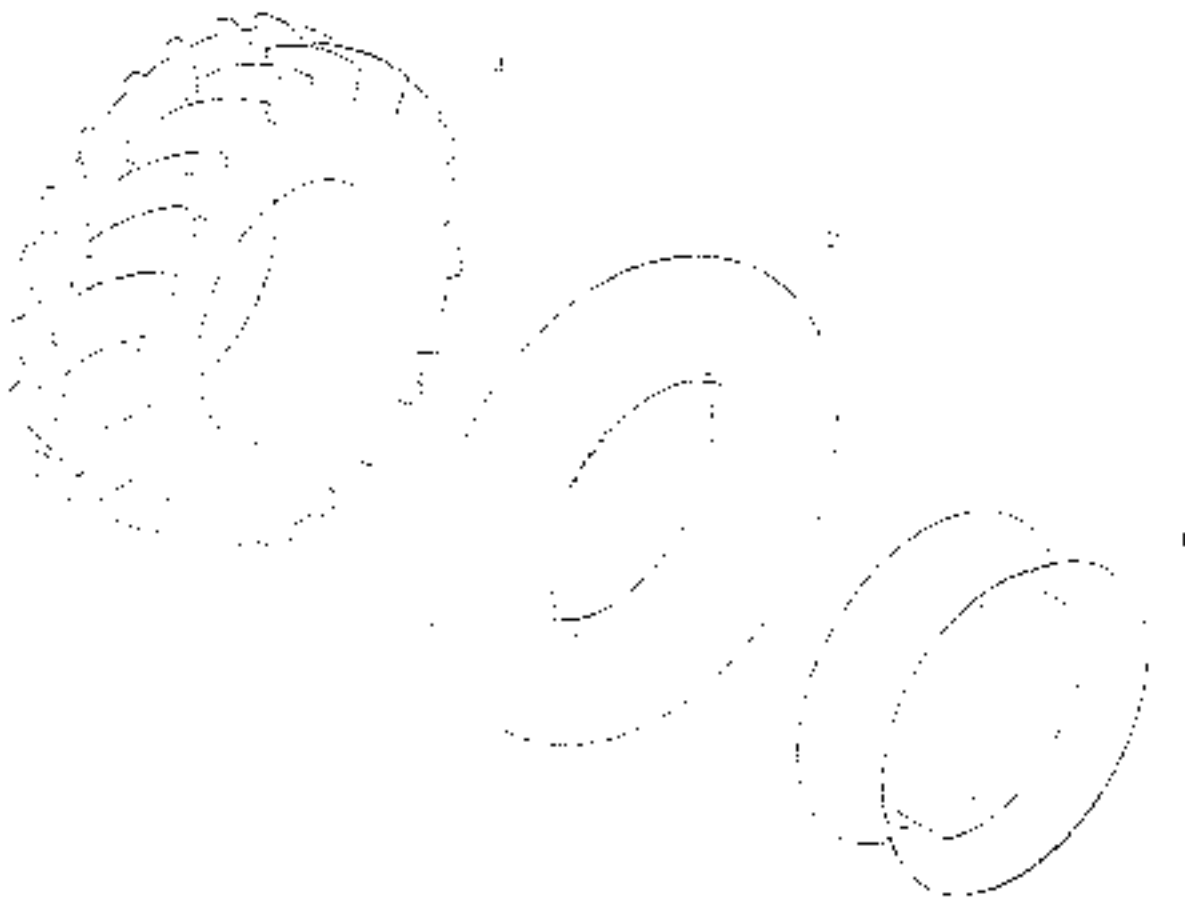
RC504.31.001
Front Driving Axle Assembly (6)



RC504.31.001
Front Driving Axle Assembly (6)

S.N	Code and Specification of Parts	Parts Name	Quantity	Remark
1	GB T5782	Hexagonal head bolt M16x100-Zn.D	6	
2	GB 193	Standard spring washer 16	6	
3	RC404.312-01	Bracket	1	
4	GB 193	Standard spring washer 14	8	
5	GB T5783	Hexagon head bolt - full thread M14x40-Zn.D	8	
6	GB T5782	Hexagon head bolt - full thread M16x40-Zn.D	1	
7	GB 16170	T type hexagon nut M16	1	
8	RC304.31F-025	Sealed shim	1	
9	RC304.31F-149	Front support shaft seat	1	
10	RC304.31F-150	Shim	1	
11	RC304.31F-148	Sliding bearing 30x10	1	
12	GB T7946-1	Oil cup M8x1	2	
13	GB 13452.1	O-type rubber seal ring 47.5x3.55G	1	
14	RC394.31F-024	Connecting pin	2	
15	RC394.31F-147	Support shaft	1	
16	GB T3452.1	O-type rubber seal ring 58x3.55G	1	
17	GB T5783	Hexagon head bolt - full thread M8x20-Zn.D	2	
18	GB 193	Standard spring washer 8	2	
19	GB T7946.2	Oil cup 45 M8x1	2	
20	GB T5783	Hexagon head bolt - full thread M17x40-Zn.D	6	
21	GB 193	Standard spring washer 12	18	
22	GB 16170	T type hexagon nut M12	12	
23	GB 1800	Stud bolt AMT 2-40-8.8-Zn.D	12	
24	RC304.31F-156	Sliding bearing 30x22	1	
25	GB 13452.1	O-type rubber seal ring 18x3.55G	1	
26	RC304.31F-155	Rear support shaft seat		

RC404.32.001
Front Wheel Assembly 8.3-20 Tire



RC404.32.001
Front Wheel Assembly & 3-20 Tire

S.N	Code and Specification of Parts	Parts Name	Quantity	Remark
1	RC404.32.0112	Rim welding-on unit (20x9.5)	1	
2	GB 12979	Inner tire of driving wheel & 3-20	1	
3	GB 12979	Outer tire of driving wheel & 3-20	1	

RC400.34B.001
Rear Wheel Assembly



RC400.34B.001
Rear Wheel Assembly

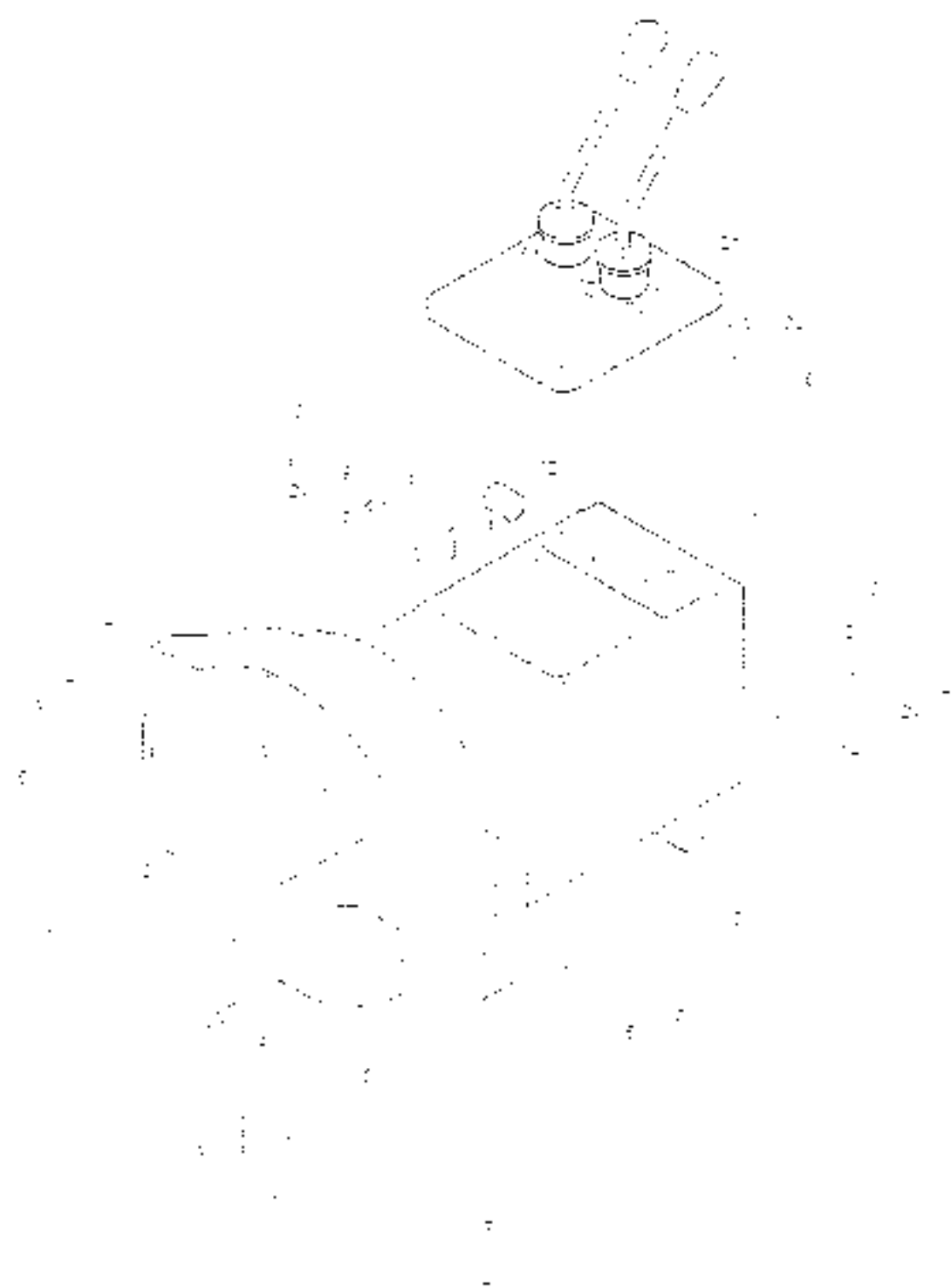
S.N.	Code and Specification of Parts	Parts Name	Quantity	Remark
1	GB T2979-1999	12.4-28 Outer tire of driving wheel	2	matched
2	GB T2979-1999	12.4-28 Inner tire of driving wheel	2	matched
3	RC400.34B.001B	Rear assembly (28xW10)	1	matched matched matched matched matched

RC300.35C.001
Traction Device Assembly

RC300.35C.001
Traction Device Assembly

S. N.	Code and Specification of Parts	Parts Name	Quantity	Remark
1	RC65.52.103	Elastic lock pin	3	
2	RC300.35C.103	Connecting pin	1	
3	RC300.35C.103	Arresting pin	2	
4	GB T 5782	Hexagonal head bolt M16X80 A3L	3	
5	RC300.35A.105	Balance pin	1	
6	RC300.35C.102	Swing rod	1	
7	RC300.35A.101	Correction swing rod	1	
8	GB T 93	Spring washer 16-A3P	10	
9	GB T 6170	Nut M16-A3L	10	
10	RC300.35C.010	Traction frame welding	1	
11	GB T 5782	Hexagonal head bolt M16X80 A3L	8	

RC550.37P1.001
Transmission Assembly (1)



RC550.37P1.001
Transmission Assembly (1)

S.N.	Code and Specification of Parts	Parts Name	Quantity	Remarks
1	GB 15783-2000	Bolt M12x40-Zn D	1	
2	GB T93-1987	Washer 12	20	
3	GB T119.1-2000	Pin 12mmx30	3	
4	GB 15782-2000	Bolt M12x110-Zn D	2	
5	GB T119.1-2000	Pin 12mmx22	1	
6	GB T6170-2000	Nut M12 Zn.D	3	
7	RC400.37E-01	Transmission housing	1	
8	GB 15782-2000	Bolt M12x150-Zn.D	1	
9	GB 15782-2000	Bolt M12x70-Zn.D	4	
10	RC300.37.159	Release fork shaft sleeve	2	
11	GB T119.1-2000	Pin 6mmx20	2	
12	RC300.37.158	Pedal shaft sleeve	1	
13	GB T6171-2000	Nut M12x1.5-Zn.D	10	
14	GB T898.1-1988	Stud bolt AM12-M12x1.75x13.8x8 Zn.D	10	
15	GB T7940.1-1995	Oil cup M16x1	2	
16	GB T93-1987	Washer 16	10	
17	GB 15783-2000	Bolt M10x25-Zn D	1	
18	RC400.37E-03	Observation hole cover plate	1	
19	GB T91-2000	Pin 6x40	1	
20	GB 15783-2000	Bolt M10x30-Zn D	6	
21	RC550.37P1.012	Transmission control mechanism assembly	1	

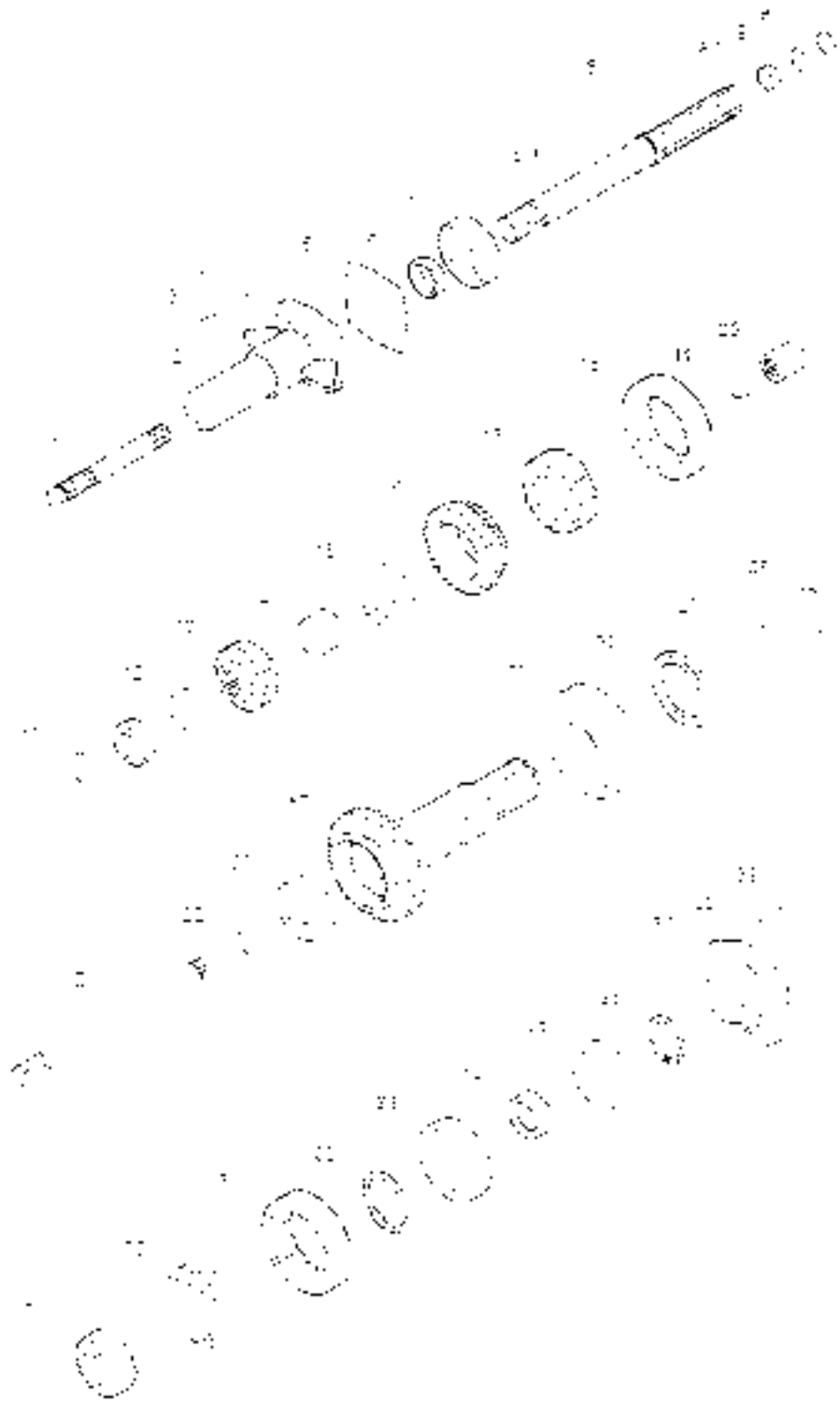
RC550.37PI.001
Transmission Assembly (2)



RC550.37P1.001 Transmission Assembly (2)

S.N	Code and Specification of Part	Part Name	Quantity	Remark
1	RC 400.37B.201	Secondary clutch shaft	1	
2	RC 300.37B.124	I shaft bearing cap	1	
3	GB 15733-2000	Bush M8x25-Zn D	4	
4	GB 193-1987	Washer 8	1	
5	RC 300.37B.125	I shaft bearing cap paper cushion	1	
6	GB 19877.1-1988	Oil seal 1640x57x10	1	
7	GB T276-1994	Bearing 6208	1	
8	RC300.37B.021a	I shaft assembly	1	
8.1	RC300.37B.202a	I shaft	1	
8.2	RC300.37.170	Bush	1	
9	GB 13457.1-1997	O-ring 23.4x1.80	2	
10	RC550.372-13	I speed gear spacer	1	
11	RC550.372-09a	I-speed gear driving gear	1	
12	RC550.372-19a b c d	I-II-speed gear spacer	1	
13	RC 550.372-10	I speed gear driving gear	1	
14	RC300.37B1.130	III speed gear bushing	1	
15	GB 15529-1986	Needle bearing K205530	1	
16	RC 550.372-11a	II-speed driving gear	1	
17	RC 550.372-12	II-II-speed meshing tooth holder	1	
18	RC 550.372-11a	II-II-speed meshing bushing	1	
19	GB T895.1-1986	Snap ring 21	1	
20	RC 500.37.136	Connecting bushing	1	
21	RC 500.37.137	Power output connecting shaft	1	
22	GB 1895.2-1986	Snap ring 14	1	
23	GB T276-1994	Bearing 6007	1	
24	RC 550.373-01a	Auxiliary transmission driving gear shaft	1	
25	GB T283-1994	Bearing 6102-2HR	1	
26	RC 550.373-02	Washer	1	

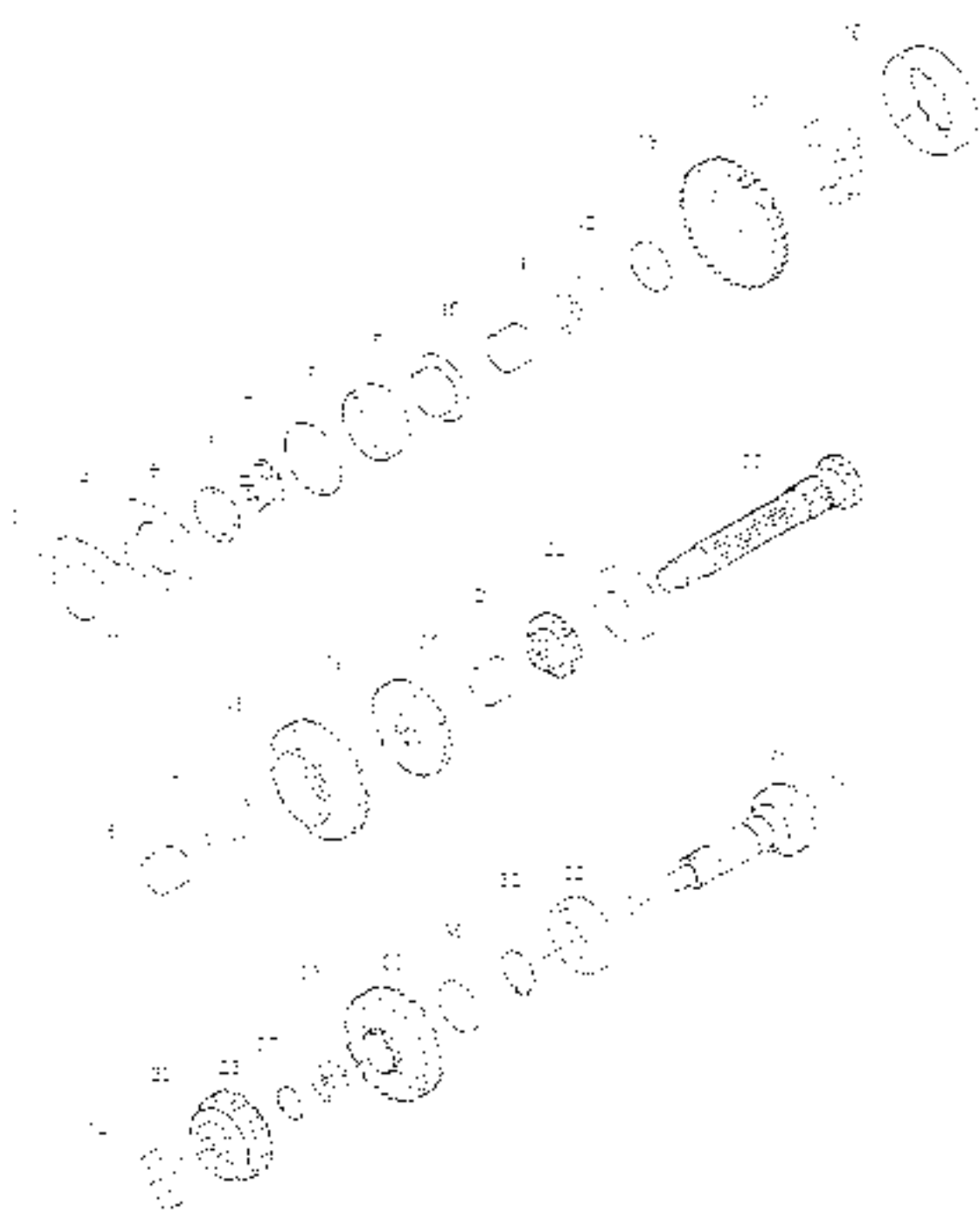
RC550.37P1.001
Transmission Assembly (2) Continued



RC550.37PJ.001
Transmission Assembly (2) Continued

S.N.	Code and Specification of Parts	Parts Name	Quantity	Remark
27	GB T5846-1986	Needle bearing K26530	1	
28	RC550.373-045	Spacer sleeve	1	
29	RC550.373-056	Intermediate speed driving gear	1	
30	RC550.373-058	Intermediate speed meshing bush holder	1	
31	RC550.373-062	Intermediate speed meshing bushing	1	
32	GB T594.1-1986	Snap ring 50	1	
33	GB T287-1994	Bearing NJP308E	1	
34	RC300.371.108	Spacer sleeve	1	
35	GB T287-1994	Bearing NE208	1	
36	GB T594.1-1986	Snap ring 40	1	
37	RC300.37.159	Auxiliary transmission bearing cap	1	
38	GB T93-1987	Washer 10	2	
39	GB T5783-2000	Bolt M10x30 Z613	2	

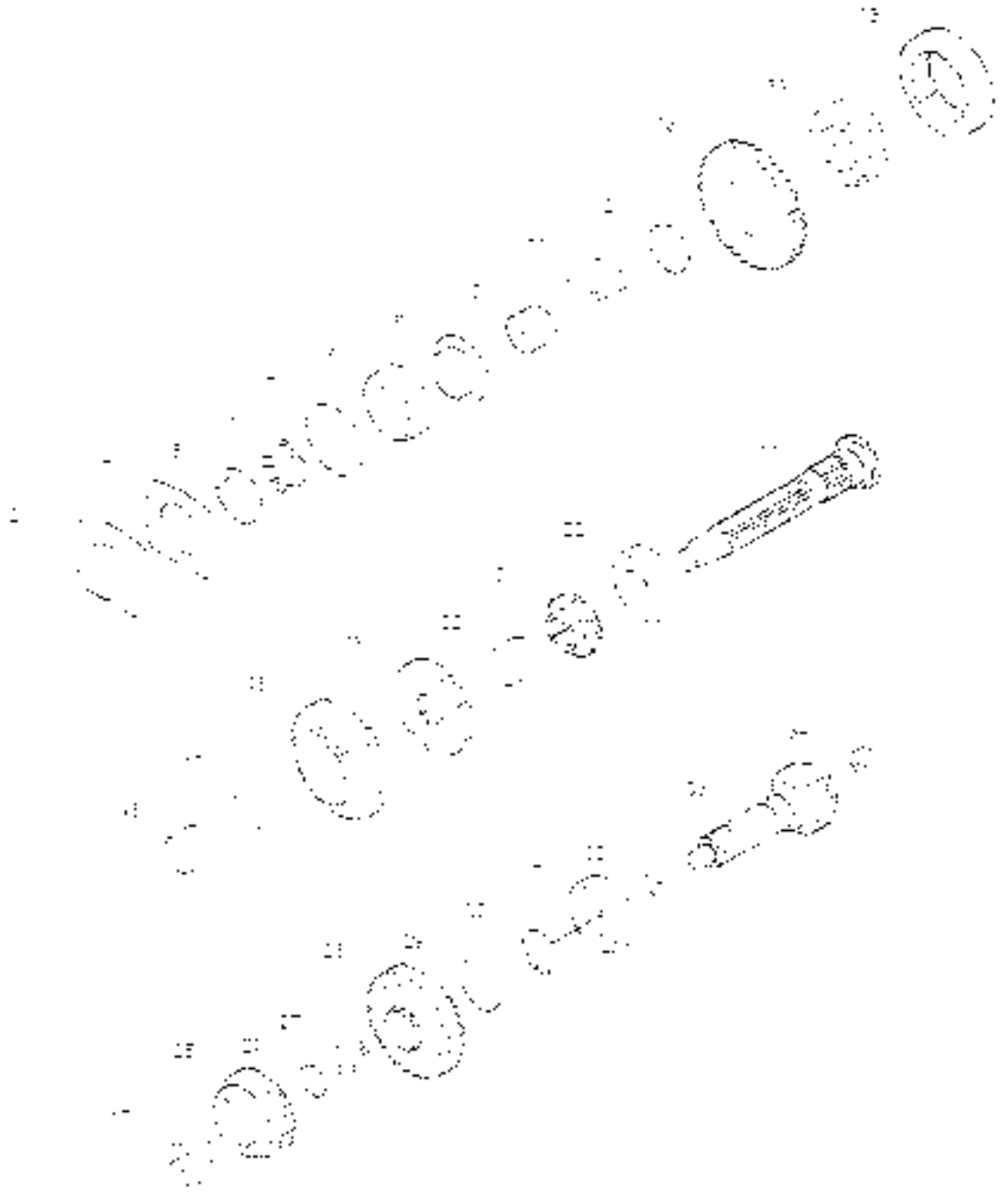
RC550.37PJ.001
Transmission Assembly (3)



RC550 37PJ001
Transmission Assembly (5)

S.N.	Code and Specification of Parts	Parts Name	Quantity	Remark
1	GB T531-2000	Bolt M8x25-Zn.D	4	
2	GB T531-1987	Washer 8	4	
3	RC300.37-120	II-shaft bearing cap	1	
4	RC300.37-119	II-shaft bearing cap paper cushion	1	
5	GB T817-1988	Nut M24x1.5	1	
6	GB T858-1988	Washer 24	1	
7	GB T305-1998	Checking ring 2756	1	
8	GB T270-1994	Bearing 6306N	1	
9	RC550.372-05	II-shaft end snap ring	1	
10	RC550.372-07	I-speed gear bushing	1	
11	GB T5846-1986	Needle bearing K434935-5	1	
12	RC550.372-15	Spacer sleeve	1	
13	RC550.372-06	I-speed driven gear	1	
14	RC300.37M-115	I-II-speed meshing tooth holder	1	
15	RC300.41C-116	PTO engaging sleeve	1	
16	RC300.37M-114	I-II-speed gear bushing	1	
17	GB T5846-1986	Needle bearing K434930	1	
18	RC550.372-01	II-speed driven gear	1	
19	RC550.372-03	III-speed driven gear	1	
20	RC300.37-110	III-IV-speed gear spacer	1	
21	RC550.372-04	IV-speed driven gear	1	
22	GB T283-1994	Bearing N10708L	1	
23	RC550.372-02	I-shaft	1	
24	RC550.373-09	Reverse gear meshing tooth holder	1	
25	RC550.373-08	Intermediate-speed driven gear	1	
26	RC300.37-111	Spacer sleeve	1	
27	GB T5846-1986	Needle bearing K43433-1	1	
28	RC450.37-103	Auxiliary transmission driven gear	1	

RC550.37P1.001
Transmission Assembly (3) Continued



RC 550.37PJ.001
Transmission Assembly (3) Continued

S/N	Code and specification of Parts	Parts Name	Quantity	Remark
29	RC 300.351.20.2a bo de l'g h a	Adjusting shim	1	
30	GB T594.1-1986	Snap ring 35	1	
31	GB 1283-1994	Bearing NUP307E	1	
32	GB 15846-1986	Needle bearing K223820	1	
33	RC 550.373-10	Auxiliary transmission driven shaft	1	
34	GB 15846-1986	Needle bearing K253120	1	

RC550.37P1.001
Transmission Assembly (4)



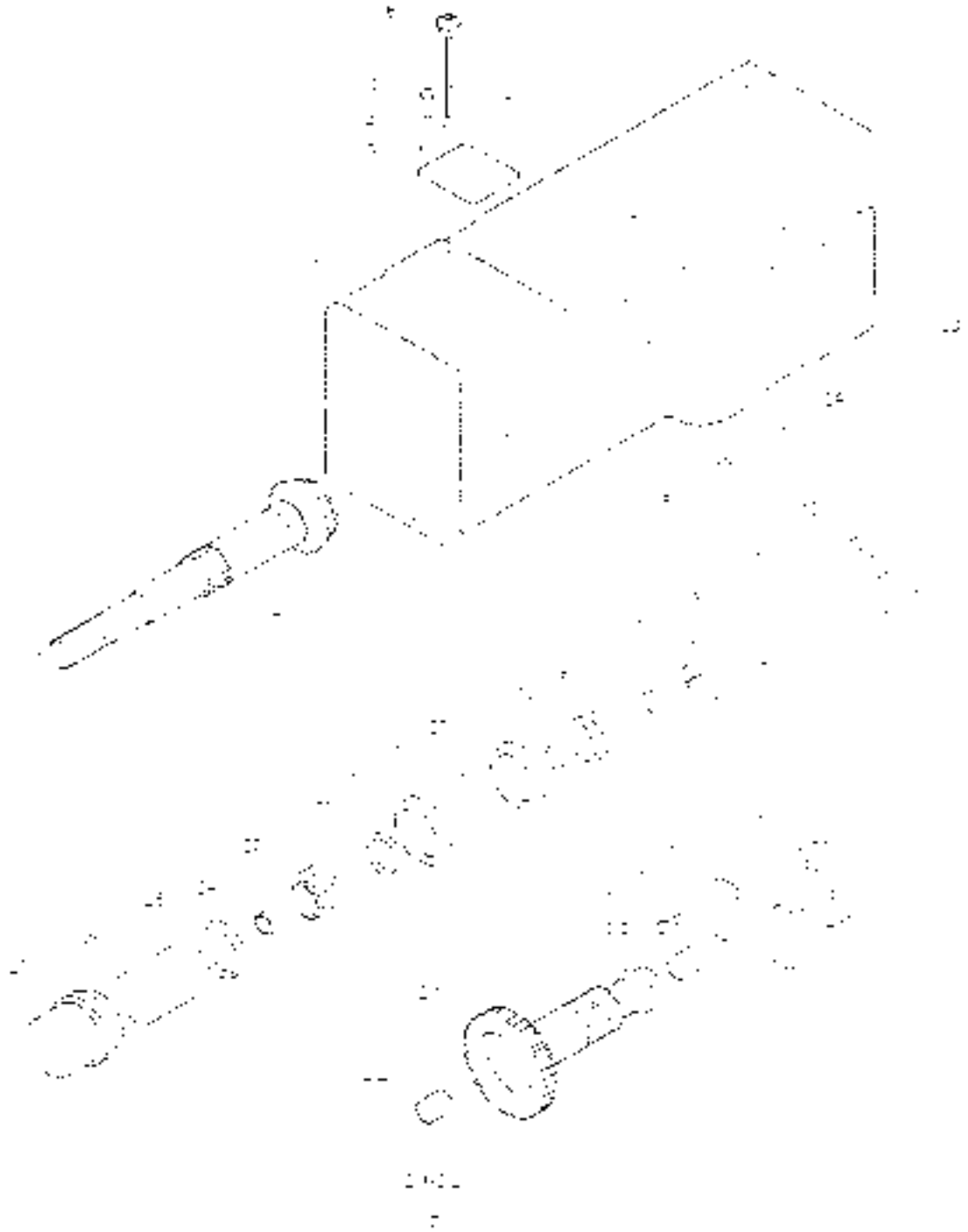
RC550.37PJ.012
Transmission Control Mechanism Assembly



RC550.37P1.012 Transmission Control Mechanism Assembly

S.N	Code and specification of parts	Parts Name	Quantity	Remarks
1	RC700.37.015A	Main shifting control handle assembly	1	
2	GB 16172.1-2000	Nut M10-Zn.D	2	
3	RC500.37P.167B	Main gear shift lever	1	
4	RC500.37.166A	Gear shift lever dust proof cover	2	
5	RC500.37.175	Nylon seat	2	
6	GB 1593.1-1998	Spring 4E	2	
7	RC500.37.179	Gear shift lever locating pin	4	
8	YB 15037.1003	Galvanized steel wire-B18x Zd14 U=00D 250	2	
9	GB 15785.2-2000	Bolt M8x10 Zn.D	8	
10	GB 193-1987	Washer 8	8	
11	RC355.37.180	Gear shift lever support	2	
12	RC400.3745-01	Transmission upper cover	1	
13	RC500.37P.168	Stick shift spring	2	
14	RC500.37.164	Spring anchor- stick shift	2	
15	RC500.37.162	Main shifting guide rod	1	
16	GB 15784-2000	Bolt M8x16 Zn.D	4	
17	GB 1551-1988	Washer 8	4	
18	RC500.374-03	Auxiliary shifting guide rod	1	
19	RC500.37P.160B	Auxiliary gear shift lever	1	
20	RC700.37.016A	Auxiliary shifting control handle assembly	1	
21	RC500.37P.200	Gear shift lever support cast iron block	2	

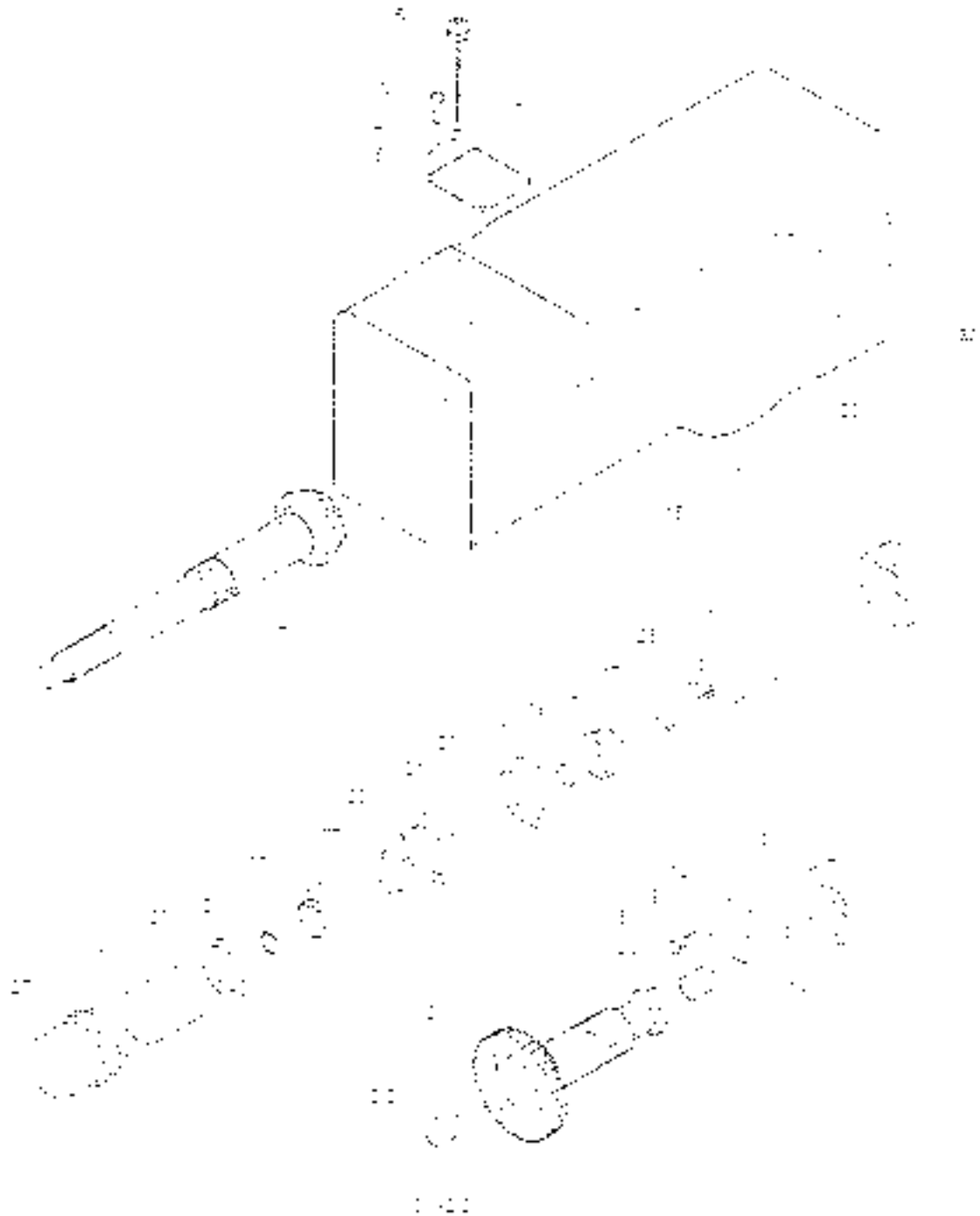
RC454.38PJ.001
Axle Assembly (1)



RC454.3SP1.001
Axle Assembly (1)

S.N	Code and Specification of Parts	Parts Name	Quantity	Remark
1	RC300.381.011	Rear axle housing assembly	1	
2	RC450.381	Reverse-position intermediate shaft assembly	1	
2.1	RC450.381.001	Reverse-position intermediate shaft	1	
2.2	RC300.37.170	Wash	2	
3	GB 15783-1980	Bolt M5x20-Zn D	4	
4	GB 190-1987	Washer 8	5	
5	RC300.381.124	Upper cap	1	
6	RC350.38.016	Oil filling breather plug assembly	1	
7	GB 1987-1977	Combination washer 36	1	
8	GB 75783-2000	Bolt M10x30-Zn D	5	
9	GB 190-1987	Washer 10	28	
10	RC300.381.204	Bearing pressing plate	2	
11	GB 1283-1994	Bearing 61301	1	
12	GB 7594.1-1986	Snap ring 50	1	
13	GB 1283-1994	Bearing NUP2230E	1	
14	RC300.381.115	Small bevel pinion shaft	1	
15	RC350.38.026	Oil plug assembly	1	
16	GB 1892.1-1986	Snap ring 48	1	
17	GB 1297-1994	Bearing 32205	2	
18	RC300.38.128	Bevel gear shaft adjusting shim	as needed	
19	RC300.38.119 RC300.38.120 RC300.38.117	Bevel gear shaft adjusting shim level gear shaft adjusting shim Bearing seat	as needed 1	
20	GB T812-1988	Nut M30x1.5	2	
21	GB T838-1988	Washer 39	1	
22	RC300.381.202a b c d e Fig 91	Adjusting shim	1	
23	RC300.381.201	Reverse idler gear	1	
24	GB T5846-1986	Needle bearing KK354324	1	

RC454.38PJ.001
Rear Axle Assembly (1) Continued



RC454.3SP1.001
Rear Axle Assembly (1) Continued

S/N	Code and Specification of Parts	Parts Name	Quantity	Remark
25	RC360 37 111	Spacer sleeve	1	
26	RC390 38 112	Meshing seat	1	
27	RC300 39 113	Gear shift meshing bushing	1	
28	RK404 35G 116	Even driving output gear	1	
	RC300 39G 116	Even driving output gear	1	
29	GB 7119.1-2000	Pin 12mmx28	2	
30	GB 7119.1-2000	Pin 14mmx30	1	

RC454.38PJ 001
Rear Axle Assembly (2)



RC454.38PJ.001
Rear Axle Assembly (2)

SN	Code and Specification of Parts	Parts Name	Quantity	Remark
1	GB 193-1987	Washer 5	8	
2	GB 193-1987	Washer 10	28	
3	QC T388-1998	L shaped patch 20	1	
4	RC300.38.180	Differential lock shifting block	1	
5	GB T879.1-2000	Pin 6x40	1	
6	GB T879.2-2000	Pin 1.5x40	1	
7	RC300.38.159a	Differential fork	1	
8	RC300.38.160	Differential lock return spring	1	
9	RC300.38.158a	Differential fork shaft	1	
10	GB T3487.3-1992	O ring 35x2.65x1	1	
11	RC300.38.172	Shifting fork shaft locating spring	1	
12	GB 1305-1988	Steel balls 8.5 G3000	1	
13	GB 15785-2000	Bolt M10x25-Zn.D	1	
14	GB 15785-2000	Bolt M8x12-Zn.D	4	
15	RC300.38.161	Lock plate	2	
16	RC300.38.151	Adjusting nut	1	
17	RC300.38.177	Right differential bearing seat	1	
18	GB T599-1988	Stud bolt AM12-M10x 1.25 x 150-8.8 Zn.D	24	
19	GB T6171-2000	Nut M12x1.25-Zn.D	24	
20	GB 193-1987	Washer 12	24	
21	RC300.38.012A	Differential assembly	1	
22	RC300.38.142	Left differential bearing seat	1	
23	RC300.38.120	Shifting fork shaft reverse gear	1	
24	RC300.38.121B	Shifter fork reverse gear	1	
25	GB T91-2000	Pin 4x32	1	
26	RC300.38.120	Reverse gear side cover	1	
27	GB 15785-2000	Bolt M10x60-Zn.D	1	
28	GB 15785-2000	Bolt M10x25 Zn.D	21	

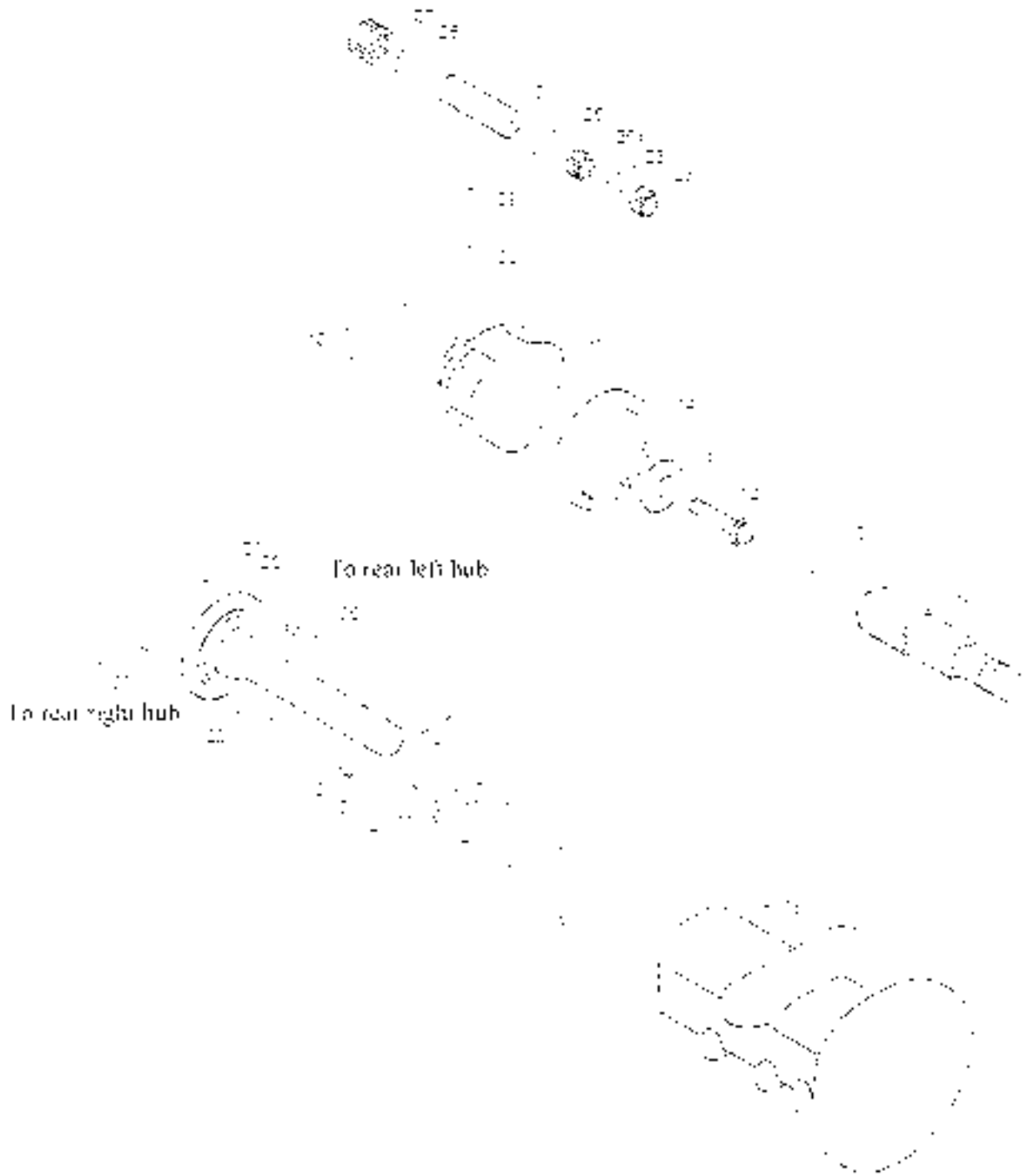
RC454.38PJ.001
Rear Axle Assembly (3)



RC454.38PJ.001
Rear Axle Assembly (3)

S.N	Code and Specification of Parts	Parts Name	Quantity	Remark
1	GB 193-1987	Washer 10	2	
2	RC300.11.015A	Power output control handle assembly	1	
3	GB T6170-2000	Nut M10-Zn.D	1	
4	RC384.38PJ	Sliding-type shifting mechanism assembly	1	
5	GB 1989-1988	Stud bolt AM17 M12x1.25x150-8.8-Zn.D	24	
6	GB 15171-2000	nut M12x1.25 Zn.D	24	
7	GB 193-1987	Washer 12	24	
8	GB T879.1-2000	Pin 6x35	1	
9	GB T879.2-2000	Pin 7.5x35	1	
10	RC500.38PJ.015	Differential hub, pedal rocker arm welding	1	
11	ZC 400.385-09	Belt M10x1x70	2	
12	ZC 300.38175	Lower cover	1	
13	GB 15783-2000	Belt M10x3.3 Zn.D	10	
14	RC450.38-08	Reverse idler shaft spacer	1	
15	RC450.38-08	Reverse idler	1	
16	GB 1593.1-1986	Snap ring 62	1	
17	GB 1383-1994	Bearing N1206E	2	
18	RC450.381-07	Reverse idler shaft	1	
19	GB T879.2-2000	Pin 8x50	1	
20	GB T879.1-2000	Pin 5x50	1	
21	RC500.38PJ.015	Pedal welding	1	
22	GB 1882-2000	Axis pin B8x74 Zn.D	2	
23	GB T91-2000	Pin 3.7x22	2	
24	GB 197.1-2002	Washer 4.700TV-Zn.D	1	

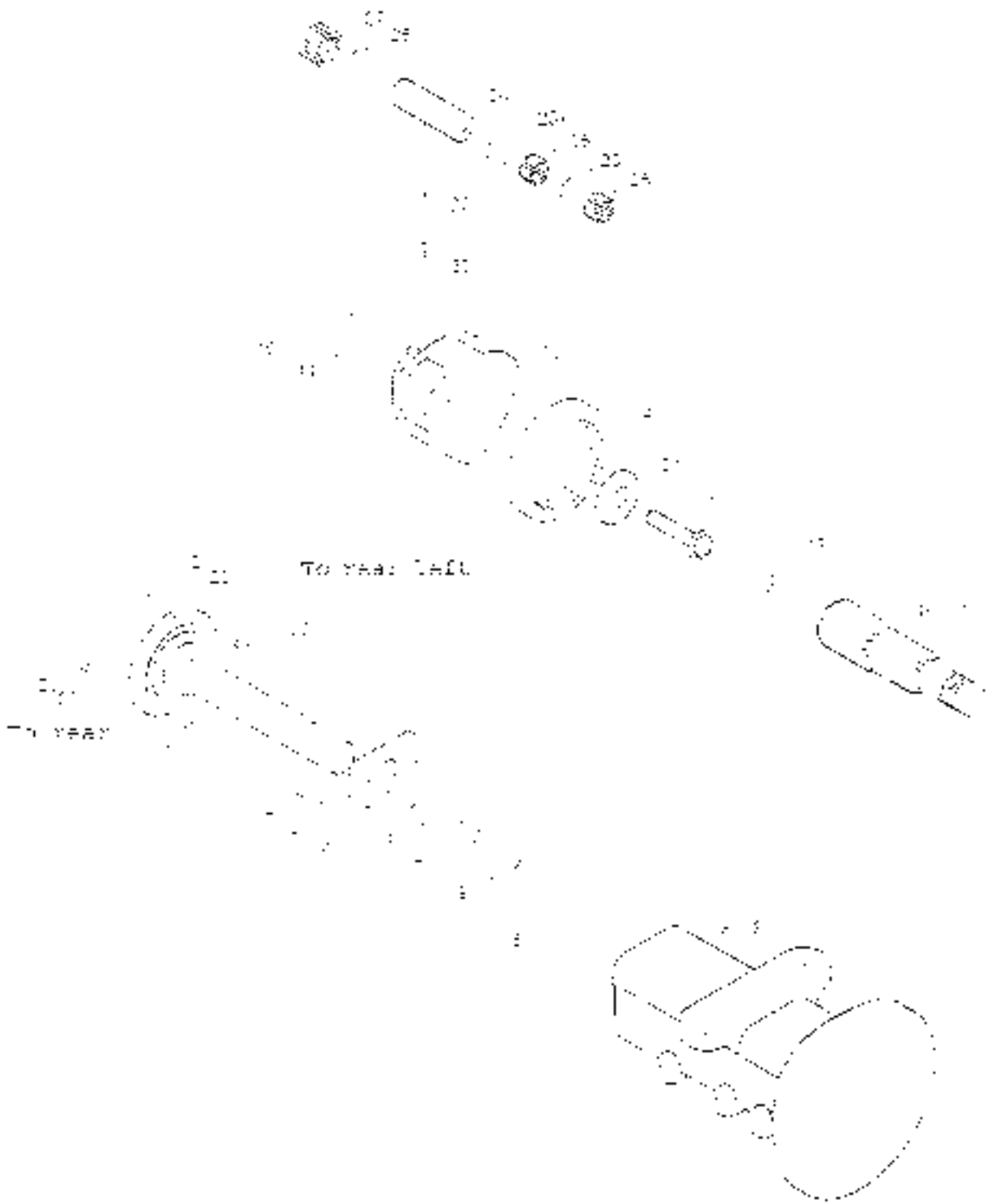
RC450.39.001
Final Drive Assembly



RC450.39.001
Final Drive Assembly

S.N	Code and Specification of Parts	Parts Name	Quantity	Remark
1	RC300.39.118	Drive shaft	1	
2	GB 15783-2000	Bolt M12x30-Zn D	8	
3	GB 1951987	Washer 12	8	
4	RC300.39.119	Oil seal seat	2	
5	GB T3452.1-1992	O ring 115x3.55	2	
6	GB 19877.1-1988	Frame of seal EB70x95x100	4	
7	GB T276-1994	Bearing 6211	2	
8	RC300.39.115	Left driving shaft housing	1	
9	GB T276-1994	Bearing 6211	2	
10	RC300.39.113	Spacer sleeve	2	
11	RC300.39.121	Adjusting shim	as needed	
	RC300.39.122	Adjusting shim	as needed	
	RC300.39.123	Adjusting shim	as needed	
12	RC300.39.112	Driving shaft lock bolt	2	
13	RC300.39.110	Driving shaft lock plate	2	
14	RC450.391-02	Final driving gear ring	2	
15	RC380.39.104	Planet carrier	2	
16	RC450.391-01	Left final drive axle shaft	1	
17	RC450.392-01	Right final drive axle shaft	1	
18	RC300.39.114	Right drive shaft housing	1	
19	RC300.39.116	Rear hub bolt	8	
20	RC300.39.157	Washer	16	
21	GB T8175-2000	Nut M16x1.5-12 /zn D	8	
22	RC300.39.158	Rear hub bolt (left)	8	
23	GB T8175-2000	Nut M16x1.5-left-12-Zn D	8	
24	RC300.39.106	Planet wheel shaft	6	
25	RC300.39.109	Needle outer spacer	12	
26	GB 1300-2000	Needle 5x73x5 G2-7-4	11x2x5	

RC450.39.001
Final Drive Assembly Continued



RC450.39.001
Final Drive Assembly Continued

S.N.	Code and Specification of Parts	Parts Name	Quantity	Remark
27	RC 180 61.1 31	Final drive planet gear	5	
28	RC 300 59 305	Needle roller inner spacer	5	
29	GB 1879 1-7000	Pin 8x26	5	
30	GB 1879 1-7000	Pin 8x26	5	
31	RC 300 59 111	Stop block	5	

RC454.40A 001
Hydraulic Steering Assembly

S.N	Code and Specification of Parts	Parts Name	Quantity	Remark
1	RC300-R0.011	Steering wheel assembly	1	
2	RC350-90P.036	Steering column assembly	1	
3	GB 15783	Bolt M10x30	4	
4	GB 193-1987	Washer 19	6	
5	M 1982	A-type combination washer 20	4	
6	RC350-40P.136	Steering gear part 1	3	
	RC350-40P.039B	Steering gear working hose	2	
8	RC450-40P.138	Damping block	1	
9	RC 800.40-107	Backing plate	1	
10	GB T5783	Bolt M8x55	3	
11	GB 193	Washer 5	11	
12	GB 16170	Nut M8	3	
13	RC 550-40P.038 A	Steering gear control pipe assembly	1	
14	RC350-10A.135	Oil suction hose	1	
15	SA 7577	A-type worm-drive hose clip	4	
16	RC350-40P.137	Steering gear part 2	1	
17	RC354-40P.015	Hydraulic steering gear	1	
18	RC 550-40P.171	Lower bracket of steering oil pipe	1	
19	GB T5783	Bolt M8x20	2	
20	RC 550-40P.126	Three-hole clamp	2	
21	GB T5783	Bolt M10x25	2	
22	GB T911	Washer 19	2	
23	GB T6170	Nut M10	2	
24	RC 450-40A.134	Steering oil tank bracket	1	
25	RC 800-40.029	Steering oil tank and breather assembly	1	
26	RC 550-40L.107	Oil delivery hose	1	
27	RC 550-40A.035	Oil delivery steel pipe welding part of oil tank	1	
28	GB T5783	Bolt M8x40	2	

RC454.40A.001
Hydraulic Steering Assembly Continued

S.N	Code and Specification of Parts	Parts Name	Quantity	Remark
29	GB 13453.1	O-ring 13x2.65	1	
30	RC650.40.112	Yellow bolt M16 L 5	2	
31	JB T982	A-type combination washer 10	2	
32	RC154.20X.1	High-pressure oil delivery hose assembly	1	
33	RC454.40X.5	High-pressure right oil delivery pipe assembly	1	
34	RC550.40P.031B	Left oil delivery pipe welding part	1	
35	RC550.40P.032B	Right oil delivery pipe welding part	1	
36	RC550.40P.030B	Oil outlet steel pipe welding part of oil pump	1	
37	KJB 1.5785	Bolt M16x40	4	
38	RC550.40P.130	Four-hole clamp	2	
39	RC450.40P.057A	Steering related upper bracket welding part	1	
40	GB 1071	Washer 6	4	
41	GB 105	Washer 6	4	
42	GB 16070	Nut M6	4	
43	RC454.40X.02	Right oil pipe bracket	1	
44	RC500.100.102A	Straight thread connector body	1	
45	JB T982	A-type combination washer 18	1	
46	RC304.40L.022	Constant-flow overflow pump	1	
47	KJB 1.601	Screw M6x 25	2	
48	RC154.40X.03	Left oil pipe bracket	1	
49	RC454.40X.01	Single-hole pipe clamp	1	
50	RC454.40X.3	Left oil delivery steel pipe welding part of oil cylinder	1	
51	RC454.40X.2	High pressure left oil delivery pipe assembly	1	

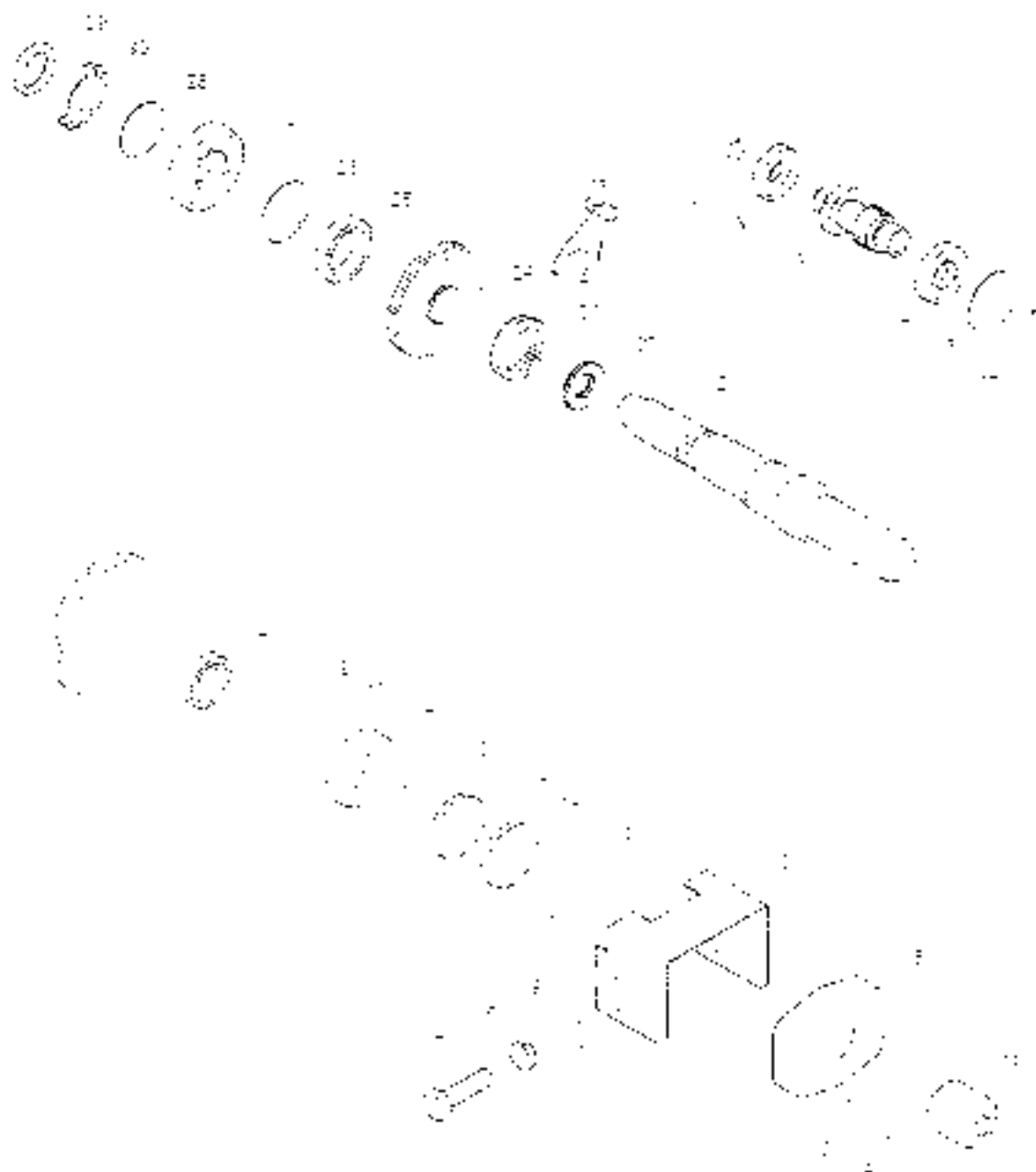
RC550 4IP 001-3
Power Output Assembly (1)



RC550.41P.001-3
Power Output Assembly (1)

S.N	Code and Spec. of Part	Part Name	Quantity	Remark
1	GB 353-2000	Axis pin B10x50-Zn.D	3	
2	GB T93-1-2002	Washer 10-200HV-Zn.D	3	
3	GB T91-2000	Pin 3 2x30	3	
4	RC 300.41.108	Front fork of fork	2	
5	GB T6170-2000	Nut M10-Zn.D	3	
6	RC300.41E.112	Control lever	1	
7	RC 300.41P.020	Power take-off control mechanism assembly	1	
8	RC800.37.4.116	Creep gear control lever	1	
9	GB T6170-2000	Nut M10-le5-Zn.D	1	
10	RC 300.41.110	Push and rear fork	1	
11	RC 300.41.128	Spacer sleeve	1	
12	RC 300.41.130	Shaft sleeve	1	
13	RC 300.41.129	Washer	1	
14	GB T93-1987	Washer 12	6	
15	GB T5782-2000	Bolt M12x75-Zn.D	1	
16	GB T5783-2000	Bolt M8x20-Zn.D	2	
17	GB T93-1987	Washer 8	2	
18	GB 191-2000	Pin 2 5x32	1	
19	RC 330-13-07	Screw	1	
20	RC300.41.125	Steering fork shaft locating spring	1	
21	GB 1508-1989	Steel ball 9.5 G1005	1	
22	RC 300.41.075	Power output gear shaft lever welding part	1	
23	GB 1879.1-2000	Pin 6x24	1	
24	GB 1879.1-2000	Pin 3.5x21	1	
25	GB 13452.1-1992	O-ring 17.2x2.65G	2	
26	RC 300.41E.109	Deflector rod shaft sleeve	1	
27	RC 300.41E.011	Finger type deflector rod welding part	1	
28	RC 350.413-01a	Power output shafting fork	1	
29	RC 300.40C.167a	Power take-off shafting fork shaft	1	
30	RC 300.3713.01.4A	Push-push handle assembly	1	

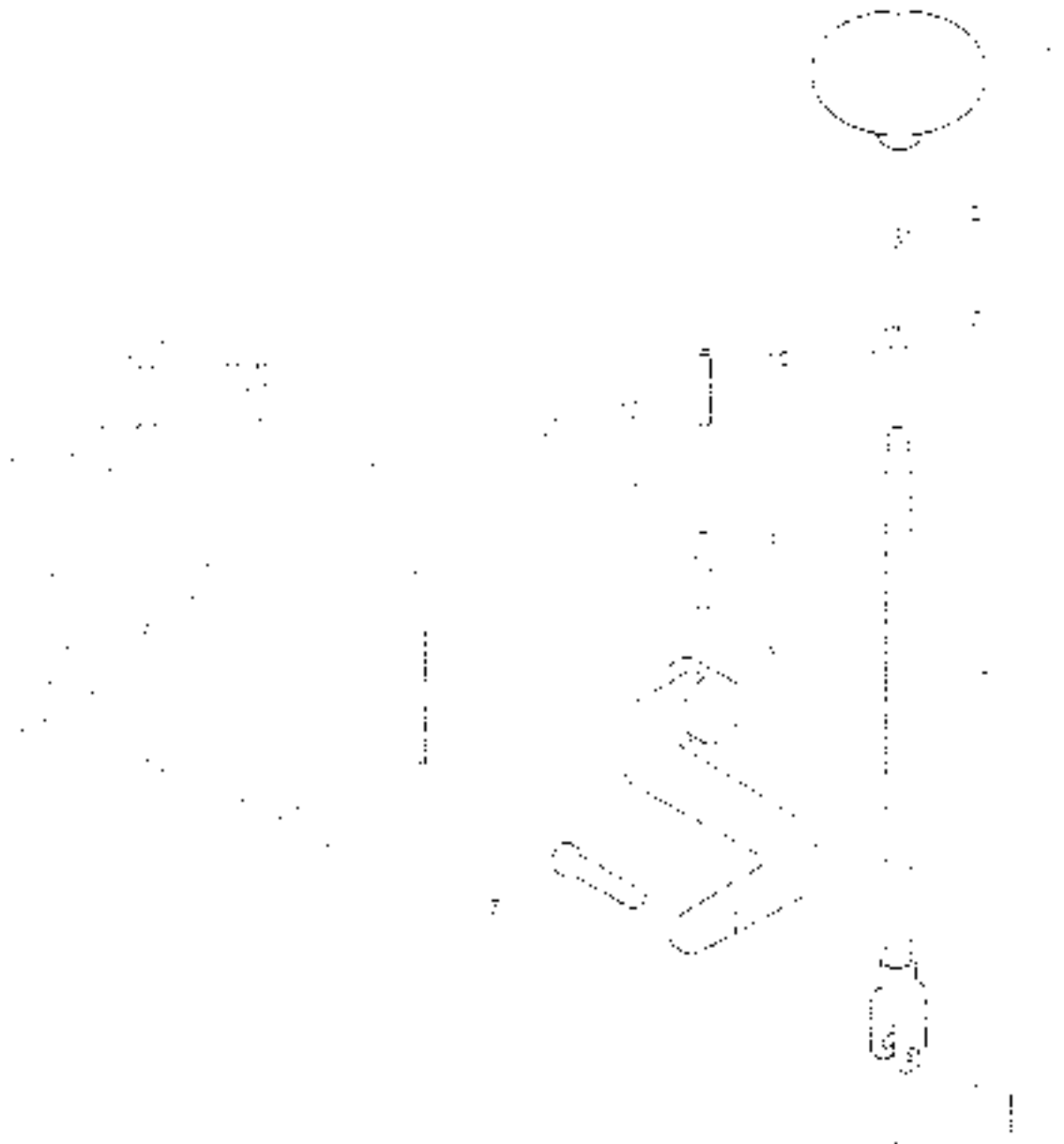
RC55Q.41P.001-3
Power Output Assembly (2)



RC550-41P-001-3
Power Output Assembly (2)

S.N.	Code and Specification of Parts	Parts Name	Quantity	Remark
1	RC550-41A-01	Power output high/low-speed driving dual gear	1	540-1000
2	GB T894.2-1986	Snap ring 40	2	
3	GB T276-1994	Bearing 6205	1	
4	GB T276-1994	Bearing 6208	1	
5	GB T305-1998	Clack ring 90 96 5	1	
6	GB 193-1987	Washer 12	9	
7	GB T5783-2000	Bolt M12x25-Zn.D	2	
8	GB T97.1-2002	Washer 12-200(A)-Zn.D	2	
9	GB T5782-2000	Bolt M12x88-Zn.D	2	
10	RC300-41E-10	Safety protective cover	1	
11	RC300-41E-102	Power output shaft cover	1	
12	RC550-412A-01	PTO shaft	1	
13	RC300-41E-115	Oil seal snap ring	1	
14	GB 19877.1-1988	Oil seal TB30x72x8D	1	
15	RC300-41E-101	Rear end cover 1		
16	RC300-41E-113	Output shaft bearing washer	1	
17	GB 1276-1994	Bearing 6206	1	
18	RC300-41E-119	Output shaft half baffle ring	1	
19	RC300-41E-114 half circle	rear baffle ring		
20	RC550-41E-05	Power output low-speed driven gear	1	
21	GB T5846-1986	Needle bearing Kx301631	1	
22	RC300-41E-116	PTO engaging sleeve	1	
23	RC300-41E-117	PTO engaging gear seat	1	
24	RC550-41E-02	Power output high-speed driven gear	1	540-1000
25	GB T5846-1986	Needle bearing K354022	1	

RC454.42PL(001)
Transfer Case Assembly (1)



RC454.42PE.001
Transfer Case Assembly (1)

S.N	Code and Specification of Parts	Parts Name	Quantity	Remark
1	RC45.38.051	Put-on-in-handle assembly	1	
2	GB 16070-2000	Ball M10-Zn.D	1	
3	RC600.45.081	Sealing seat assembly	1	
4	RC702.420.001	Control lever assembly	1	
5	GB 1582-2000	Axis pin B10x30-Zn.D	1	
6	GB 197.1-2000	Washer 10-200HV-Zn.D	5	
7	GB 191-2000	Pin 3.2x16	1	
8	RC454.422C-01	Knocker arm	1	
9	GB 1879.1-2000	Pin 5x32	1	
10	GB 1879.1-2000	Pin 5x32	1	
11	GB 1578.2-2000	Ball M10x30-Zn.D	4	
12	GB 193-1987	Washer 10	5	

RC454.42PE.001
Transfer Case Assembly (2)



RC454.42PE.001
Transfer Case Assembly (2)

S.N	Code and Specification of Parts	Parts Name	Quantity	Remark
1	GB T92-1987	Washer 8	1	
2	GB 15783-2000	Bolt M8x16-ZnD	2	
3	RC304.42X.015	Jacket (1) welding part	1	
4	GB 15783-2000	Bolt M10x20-ZnD	2	
5	GB 193-1987	Washer 10	3	
6	GB 197.1-2002	Washer 10-200HV-ZnD	3	
7	GB 7245.2-1-2002	O-ring 34.5x3.55G	2	
8	GB 1879.1-2000	Pin 6x35	2	
9	RC304.42.107a	Spline sleeve	2	
10	RC404.42.128	Rear transmission shaft	1	
11	GB 1894.1-1986	Snap ring 26	2	
12	RC304.42X.017	Jacket (2) welding part	2	
13	GB 1894.2-1986	Snap ring 77	1	
14	34.42X.13e	Spacer	1	
15	GB 276-2002	Bearing 6007-2Z	1	
16	RC304.42X.135	Rubber ring	1	
17	GB 118.1-2000	Pin 5x6x35	2	
18	RC554.422.1	Intermediate bearing semi-assembly	1	
19	GB 193-1987	Washer 12	2	
20	GB 15783-2000	Bolt M12x40-ZnD	2	
21	RC304.42X.135	Intermediate spline sleeve	1	
22	GB 15783-2000	Bolt M8x20-ZnD	3	
23	RC404.42.130	Front transmission shaft	1	
24	RC404.42.016	Jacket (3) welding part	1	

CHERY

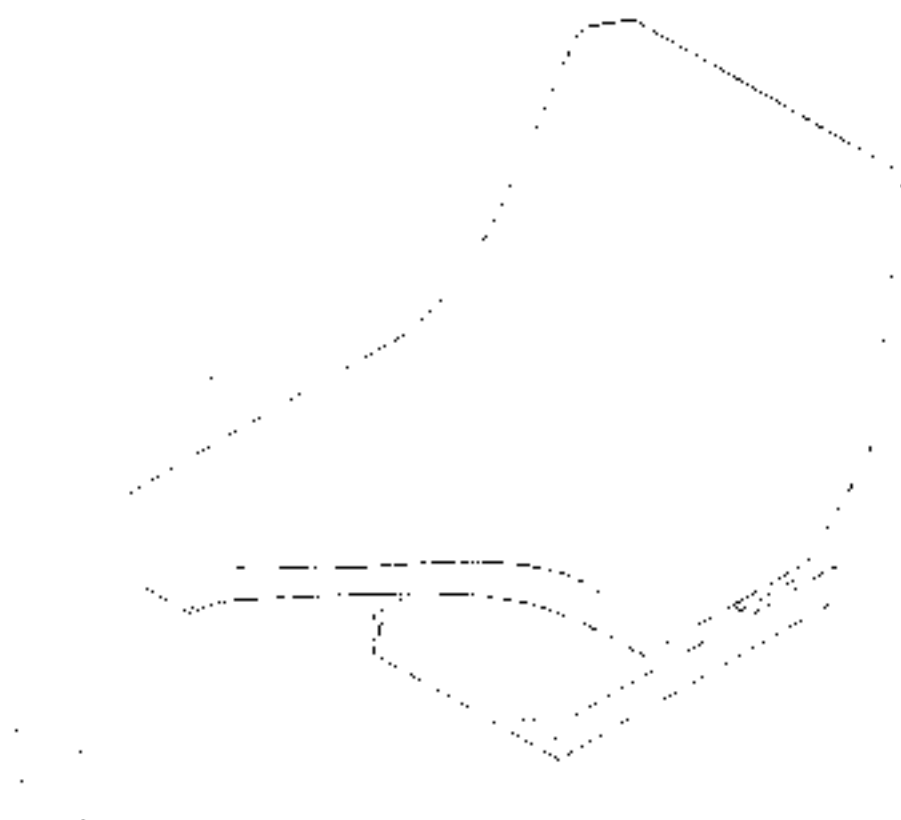
RC450.43C.001
Brake Assembly - 2



RC450.43C 001
Brake Assembly - 2

SN	Code and Specification of Parts	Parts Name	Quantity	Remarks
1	RC450.43C 019	Hand brake and cable assembly	1	
2	GB 7572	Bol. M10x15	2	
3	GB 783-87	Washer 10	2	
4	GB T97.1	Washer 10	2	
5	RC450.43C 14	Scap block	1	
6	GB 1882	Axis pin B10x30	1	
7	GB 197.1	Washer 10 200HV-437	1	
8	GB 191	Pin 5x2x16	1	
9	RC450.43C 131	Rocker arm shaft	1	
10	RC450.43C 020	Rocker arm	1	
10.1	RC450.43C 126	Bush of rocker arm	1	
10.2	RC450.43C 021	Rocker arm welding	1	
11	GB 197.1	Washer 20	1	
12	GB 7894.1	Scap ring for shaft 20	1	

RC300.44C.001
Driver's Seat Installation Assembly



C300.44C.001
Driver's Seat Installation Assembly

S.N.	Code and Specification of Parts	Parts Name	Quantity	Remark
1	KC300.44C.001 RJ0250.44C.011	Seat mounting assembly (Seat assembly)	1	
2	GB 75783-2000	Bolt M10x1.25 Zn.D	1	1C50978.764.200
3	GB 753-1987	Washer 10	4	5.0670007.003
4	GB 187.1-200.2	Washer 10-200HS-Zn.D	4	

RC550.45C.001
Floor and Mudguard Assembly



RC550.45C.001
Floor and Mudguard Assembly

S/N	Code and Specification of Parts	Parts Name	Quantity	Remark
	RC 550.45C.001	Floor and mudguard assembly	1	
1	RC 550.45C.011	Floor and fender welding assembly	1	
2	RC800.45.275	Seal cover	2	
3	GB T5782	Bolt M16x140-A31	6	
4	GB T96.1	Washer 6-A30P	7	
5	RC800.45.149	Damping block guard	12	
6	RC800.45.150A	Rubber damping block	12	
7	RC 550.45P.030-1	Front fender support welding	1	
8	RC800.15.151C	Damping block entry pipe	6	
9	RC800.45.273	Big washer	6	
10	GB T6170	Nut M16-A31	12	
11	RC 550.45P.029-1	Front left support welding	1	
12	GB T193	Washer 7-A30P	8	
13	GB T7778.5	Bolt M12x25-A3L	8	
14	RC 550.45P.02	Pedal assembly	2	
15	GB T56.70	Nut M10-A31	12	
16	GB T792	Washer 13-A30P	12	
17	GB T193.1	Washer 16-A30P	12	
18	GB T7778.5	Bolt M10x30-A3L	12	
19	GB T15783	Bolt M14x35-A3G	5	
20	GB T193	Washer 14-A30P	8	
21	RC 550.45P.031-1	Rear support welding	2	
22	GB T193.1	Washer 18-A30P	4	
23	RC 550.51C.020	Reflector support welding	2	
24	RC 550.51C.021	Right reflector assembly	2	AW14-3R-023300
25	RC 550.51C.003	Reflector bracket	2	
26	RC 550.51C.030	Left reflector assembly	2	AW14-3R-023300

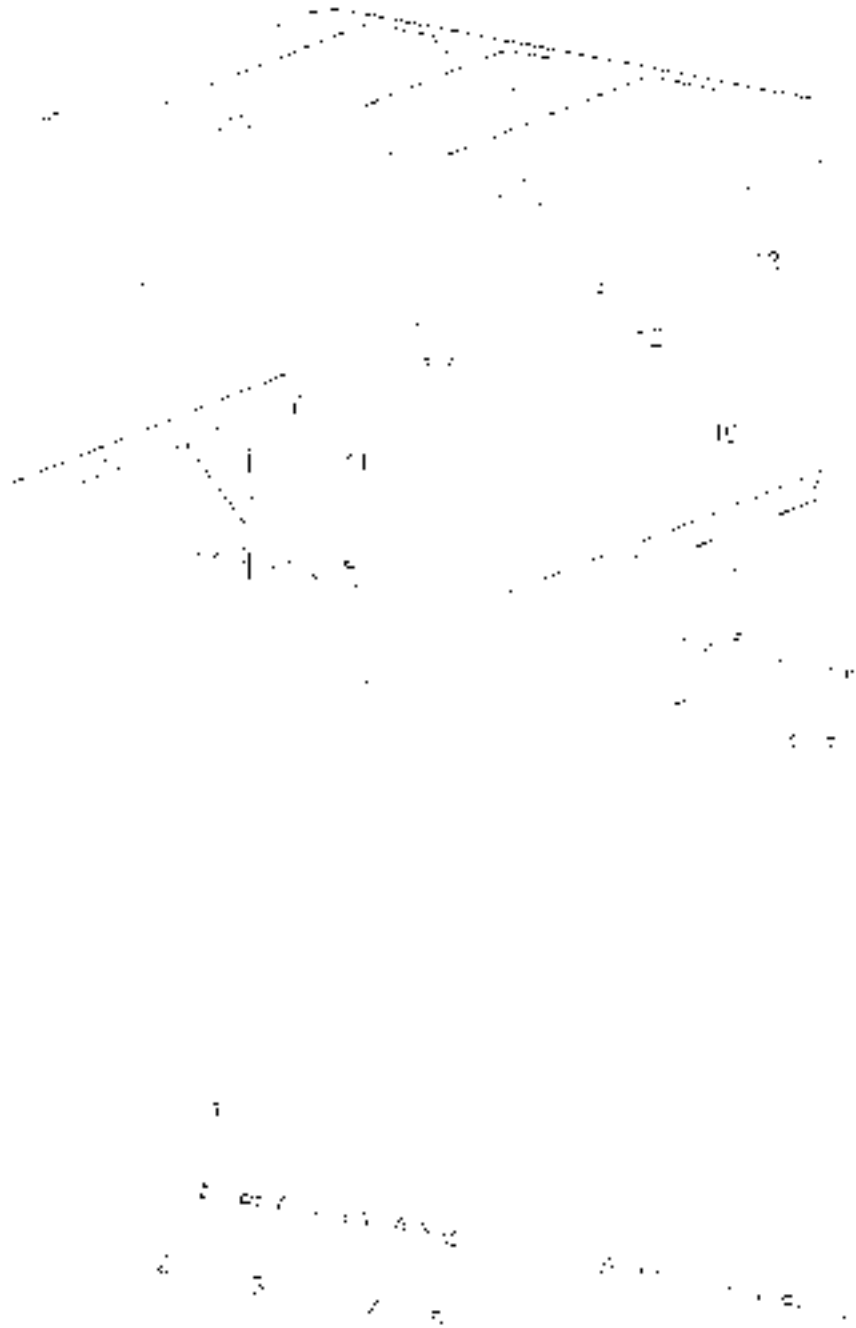
RC550.45C.001
Floor and Fender Assembly (continued 1)



RC550-45C-001
Floor and Fender Assembly (continued 1)

S/N	Code and Specification of Parts	Parts Name	Quantity	Remark
23	RC500-473-031A	Right view mirror assembly JH-F11-46R-C589541	2	
24	RC550-45P-056	Floor rear view mirror bracket welding	2	
25	GB 1-5783	Bolt M8x25-A3L	4	
26	GB 1-93	Washer 8-AOP	4	
27	GB 1-6770	Nut M8-A3L	4	
28	GB 1-5783	Bolt M8x16-A3L	4	
29	GB 1-697	Washer 8-AOP	4	
30	GB 1-971	Washers AOP	4	
31	RC500-45-225	Round nut gasket	8	
32	RC500-45-075	Round nut press fit	4	
33	RC550-45P-114	Front wind screen 14-47R-0003303	2	
34	RC550-45P-012	Instrument box assembly	1	
35	GB 1-818	Screw M6x15	6	
36	GB 1-93	Washer 6-AOP	6	
37	GB 1-971	Washer 6-AOP	6	
38	RC550-45P-106	Control lever dust proof cover	1	
39	RC500-45-075A	Right console handle assembly	1	
40	RC550-45P-115	Lower rear window glass	1	
41	RC550-45P-116	Lower rear window glass seal	1	
42	GB 1-9130	Nut M12-A3L	4	
43	GB 1-93	Washer 12-AOP	4	
44	GB 1-971	Washer 12-AOP	4	
45	RC500-45-560A	Left console handle assembly	1	

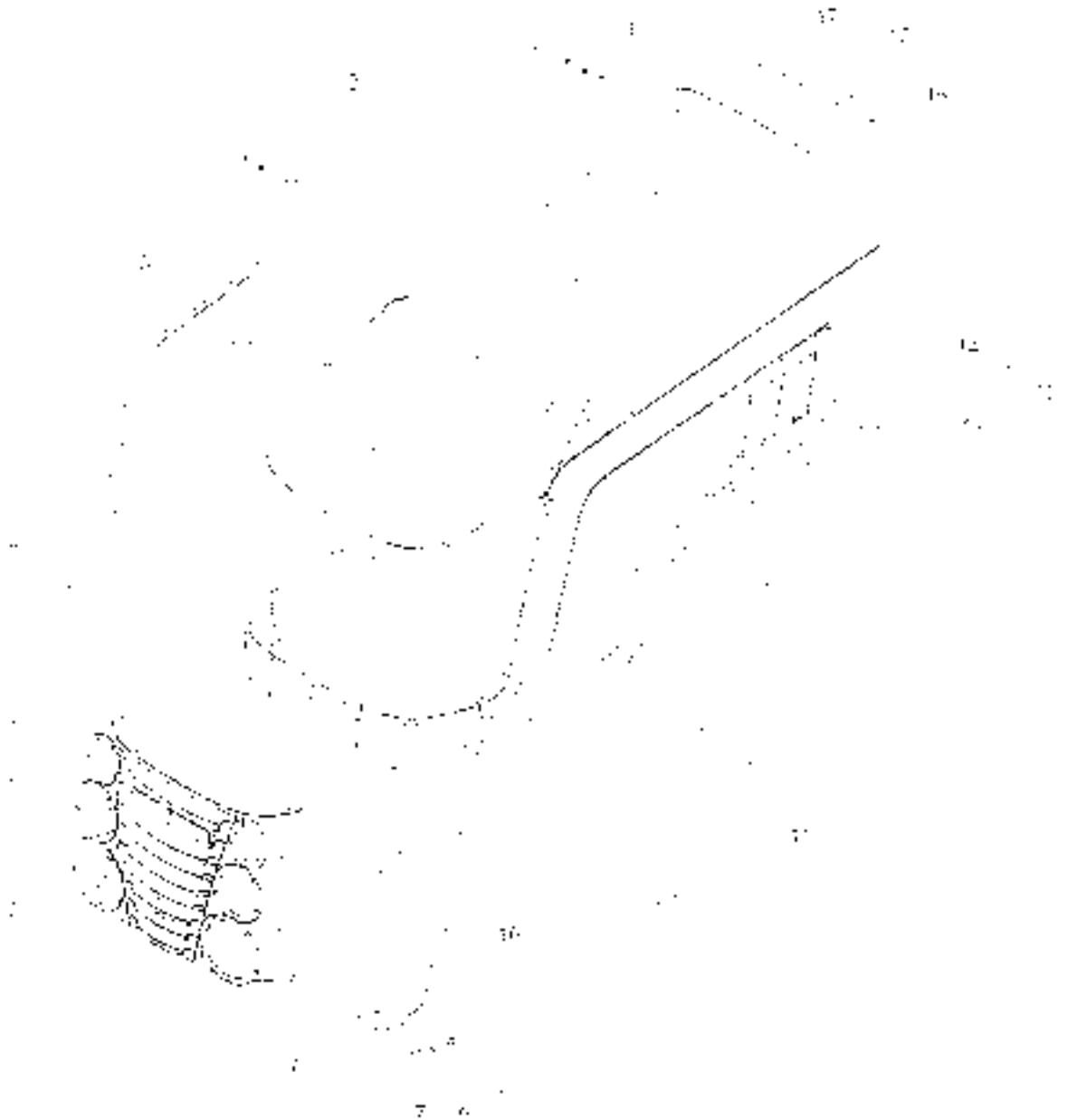
RC550.46.001
Safety Frame Assembly



RC550.46.001
Safety Frame Assembly

S.N.	Code and Specification of Parts	Parts Name	Quantity	Remark
1	RC 550.46.001 RC550.16.011	Safety shell assembly safety shell welding	1	
2	GB 15784	Bolt M16x1.5x120-A3L	8	
3	GB T97.1	Washer 16-A09	16	
4	GB 143	Washer 16-A09	8	
5	GB 16171	nut M16x1.5-A2L	8	
6	GB 16170	nut M12-A27	16	optional
7	GB T93	Washer 12-A09	16	optional
8	GB T97.1	Washer 12-A09	16	optional
9	RC 550.46.130	L type bolt	4	optional
10	RC 550.46.015	Ceiling left bracket welding part	1	optional
11	RC 550.46.016	Ceiling right bracket welding part	1	optional
12	GB 5782	Bolt M12x35-A3L	8	optional
13	RC 550.46.120	Ceiling	1	optional

RC550.47P.1
Engine hood Installing Assembly



RC550.47P.1 Engine hood Installing Assembly

S/N	Code and Specification of Parts	Parts Name	Quantity	Remark
	RC550.47P.001	Engine hood installing assembly	1	
1	RC550.47P.012	Welding	1	
2	RC550.47.076-1	Air spring	2	
3	RC550.47P.154	Right mesh plate	1	
4	RC550.45.070	Lamp left mesh plate assembly	1	
5	RC550.47.015	Bezel front grille assembly	1	
6	GB T818	Screw M6X12 A31	20	
7	GB T97.1	Washer 6-A31	20	
8	GB T93	Washer 6-A31	19	
9	GB 16170	Nut M6-A2L	19	
10	RC550.45.021	Lamp right mesh plate assembly	1	
11	RC550.47P.155	Left mesh plate	1	
12	GB 16170	Nut M10 A31	2	
13	GB 193	Washer 10-A31	2	
14	GB T97.1	Washer 10-A31	1	
15	GB 197.1	Washer 18-A31	1	
16	GB 191	Split pin AX32	2	
17	GB 1882	Axis pin B1KA50	1	

RC450.48.012 Battery Mounting Assembly

S N	Code and Specification of Parts	Parts Name	Quantity	Remarks
1	GB T6170-2000	Nut M10	1	
2	GB T93-1987	Washer 10	1	
3	GB T97.1-1985	Washer 10	1	
4	RC400.485 A.2	Battery ground wire	1	
5	6-QW-100M7	Maintenance-free storage battery	1	
6	RC450.48.010	Battery pressing plate	1	Hubei, Caner Storage Battery Co. Ltd
7	RC400.485 A.1	Power cord assembly	1	
8	RC450.48.102	Storage battery damping cushion	1	
9	RC400.485 A.10	Battery pull rod	2	
10	GB T6170-2000	Nut M8	2	
11	GB T93-1987	Washer 8	2	
12	GB T97.1-1985	Washer 8	2	

RC400.48X.023A
Headlamp Wire Harness Assembly



To "body wire harness assembly"

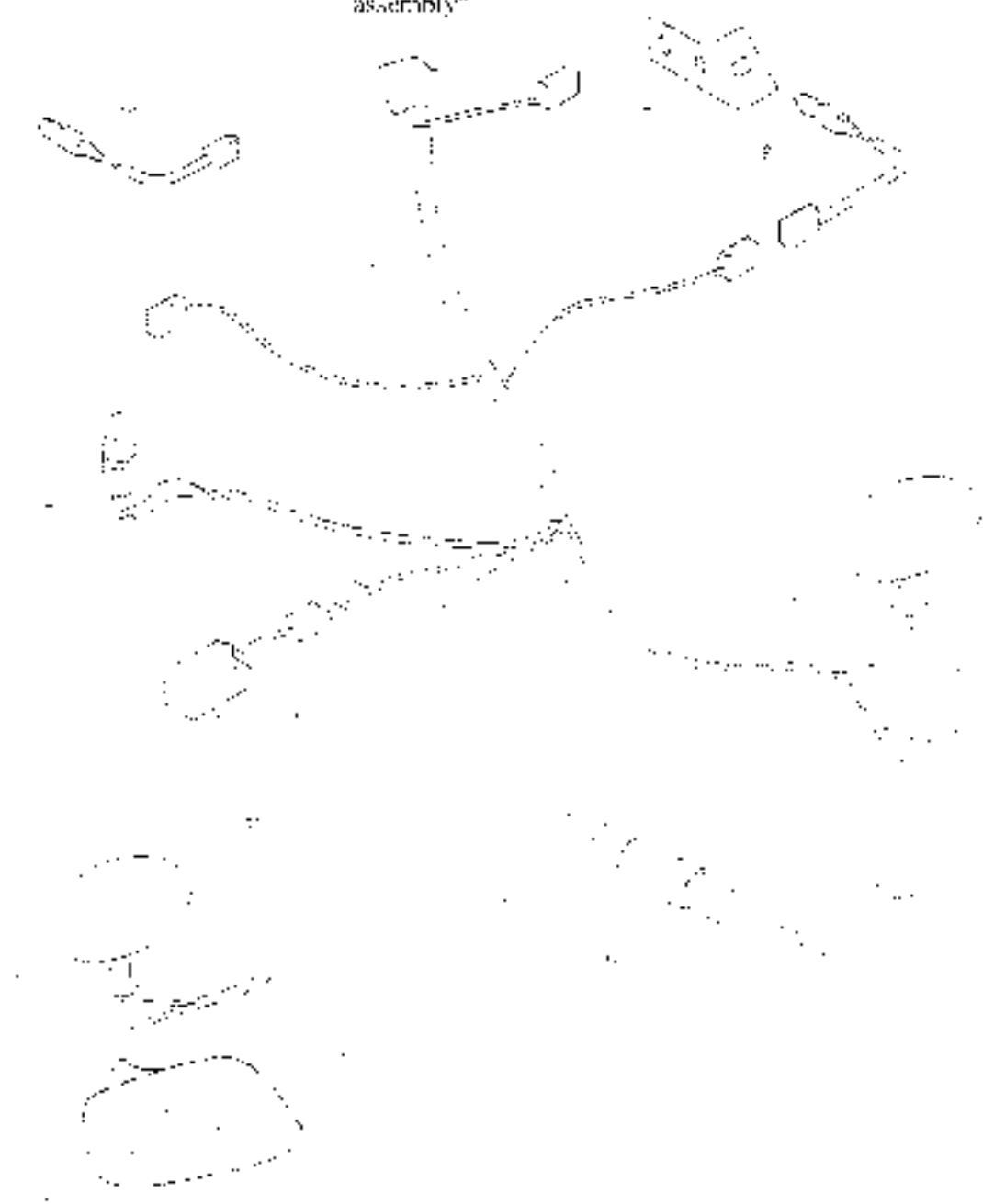


RC400.48X.023A
Headlamp Wire Harness Assembly

S. N.	Code and Specification of Parts	Parts Name	Quantity	Remark
1	RC400.48X.023A	Headlamp wire harness assembly	2	
2	RC 550.47X.013.1	Front direction indicator assembly	2	L11 6R-012511
3	RC 550.47X.013.2	High beam assembly	2	L11 112R-009124
4	RC 550.47X.013.3	Front combination light assembly	2	L11 112R-009112
5	DL 121	Horn assembly	1	L11 002130

RC554.48E.1
Rear Lamp Wire Harness Assembly

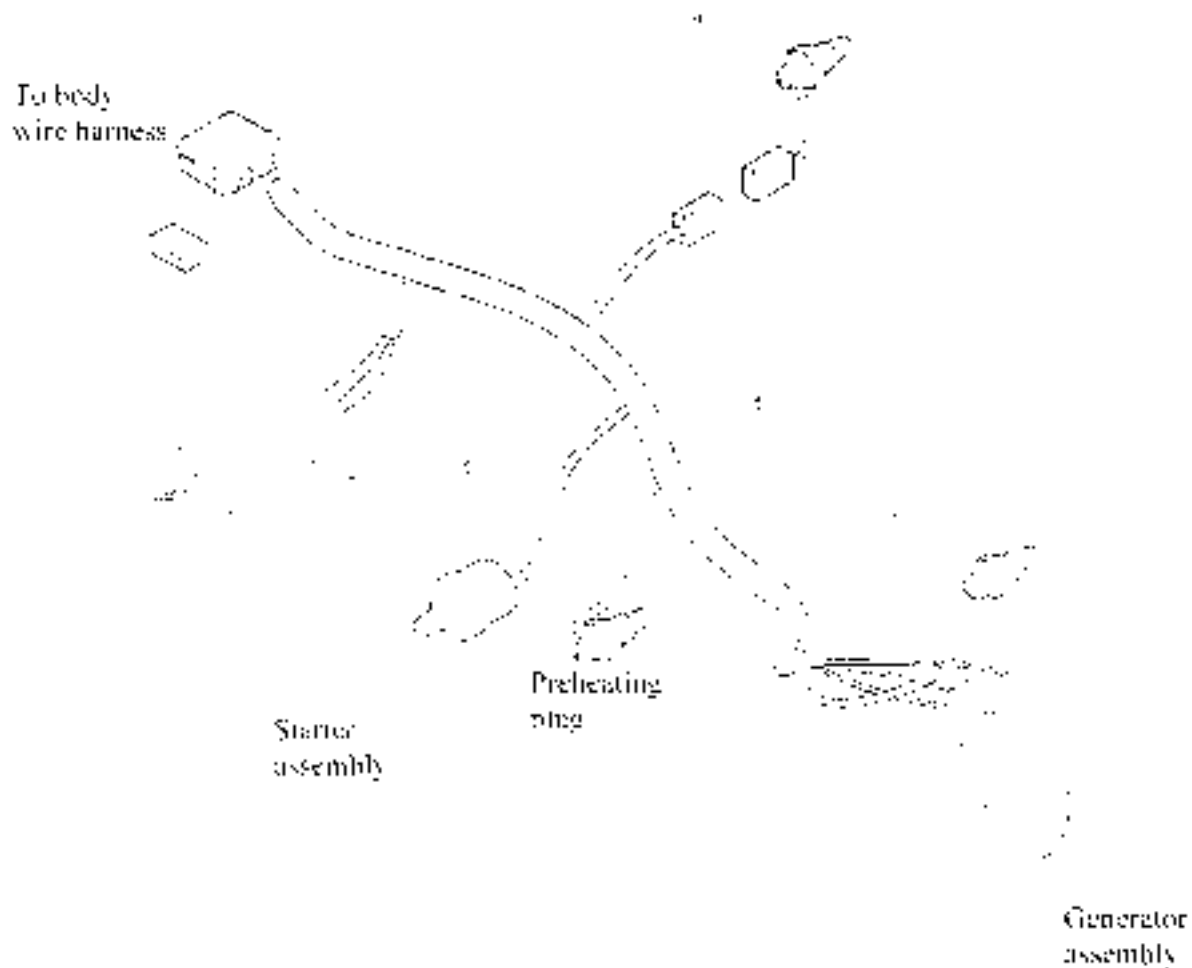
To "body wire harness
assembly"



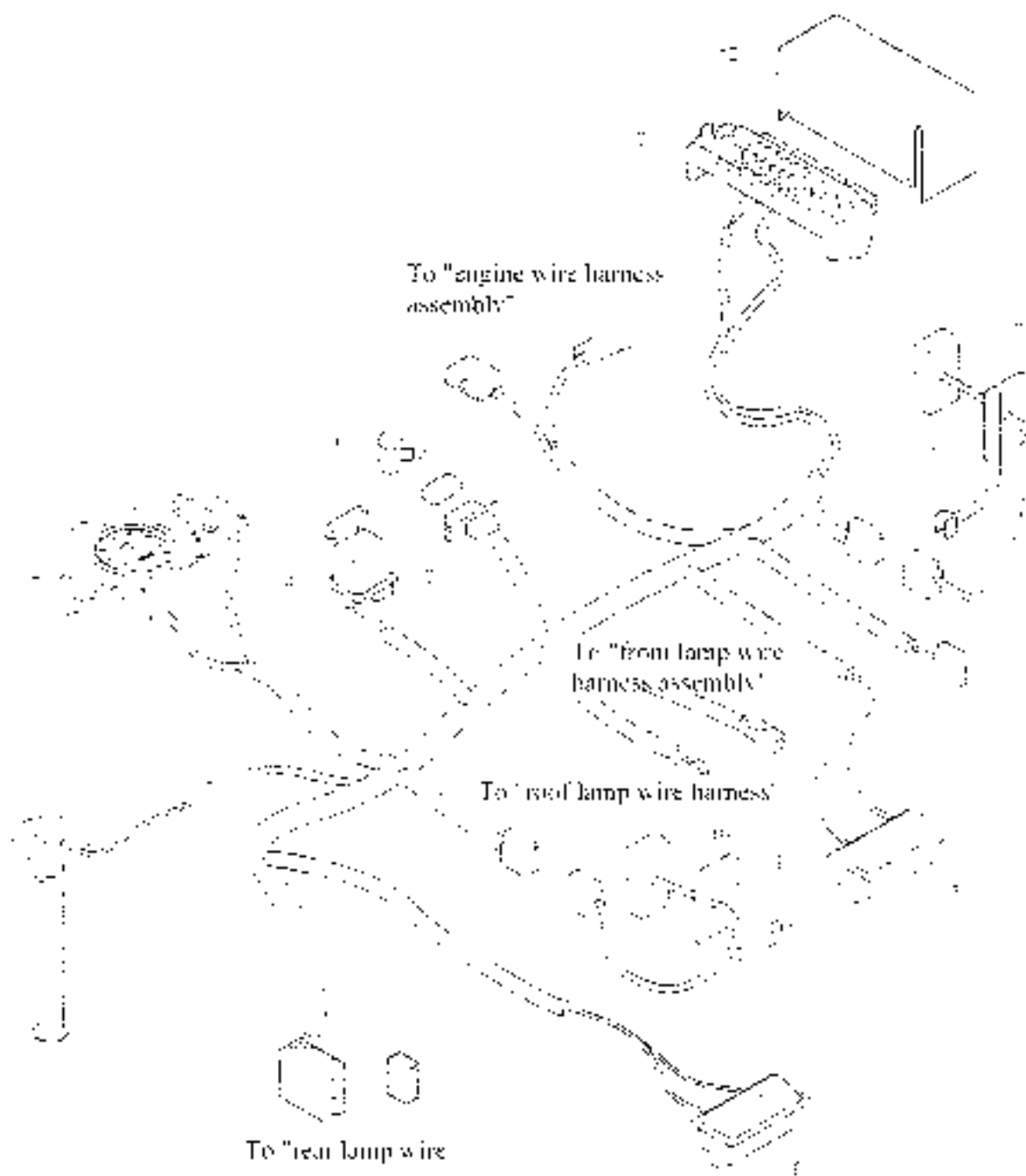
RC554.48E.1 Rear Lamp Wire Harness Assembly

S/N	Code and Specification of Parts	Parts Name	Quantity	Remark
1	RC554.48E.1	Rear lamp wire assembly	1	
2	RC65.48.087	Air pressure alarm	1	
3	SL465.48.053	Rear work lamp	2	U-TR-012515
4	RC580.48X.051.1	Rear direction indicator lamp assembly	2	
5	RC550.48X.052.2	Brake lamp assembly	2	
6	D250.48.055.1	License plate lamp assembly	2	U-TR-013015
7	RK554.48E.107	Safety switch bracket	1	
8	RC500.48.011	Secure startup switch assembly	1	E4-4R-004208
9	DJ101	Seven-hole trailer socket	1	
10	DJ102	Seven-hole trailer plug	1	
11	RC550.51U.030	License plate bracket welding	1	

RK400.48C.1.1
Engine Wire Harness Assembly



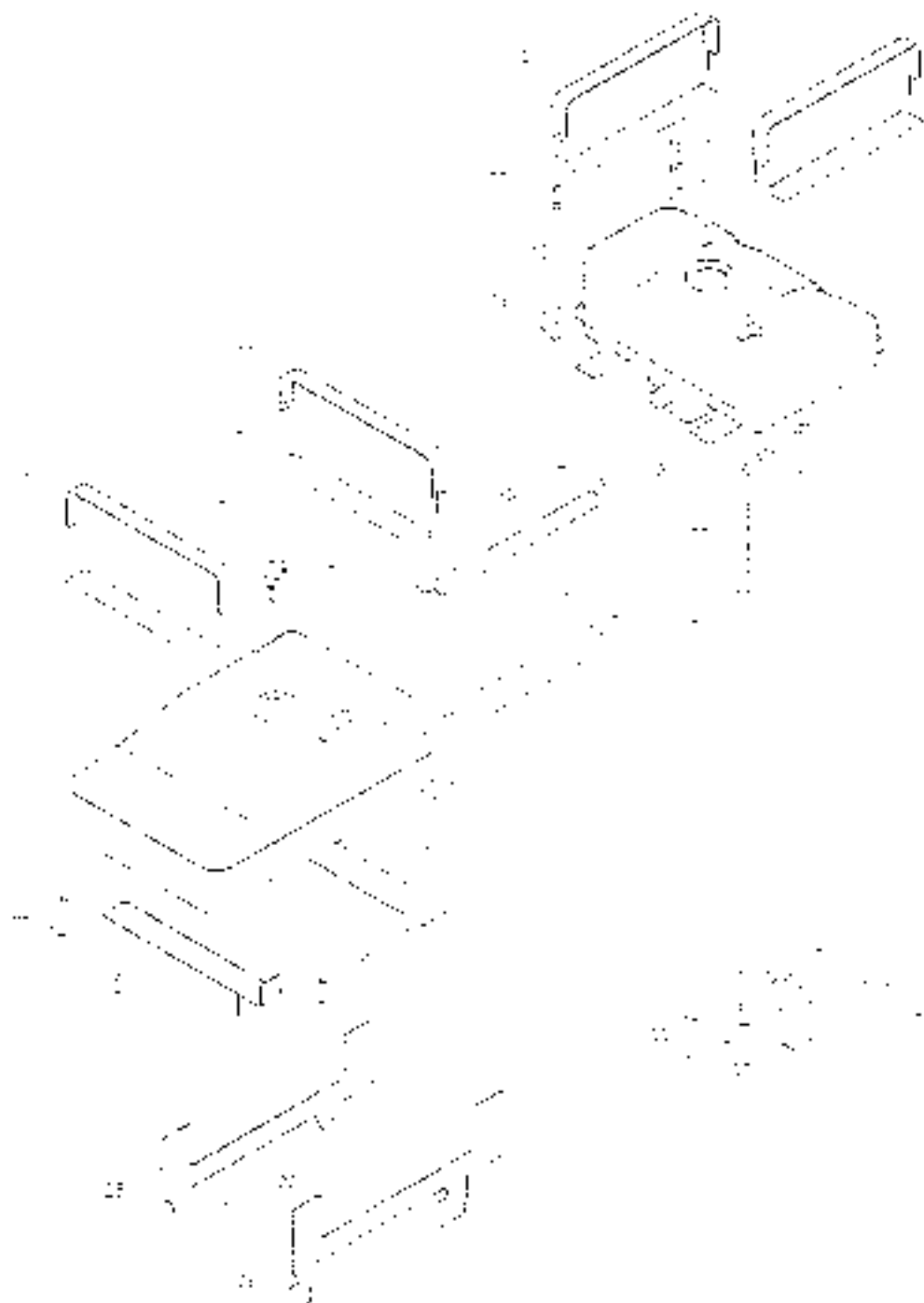
RK554 48E.2.1
Body Wire Harness



RK554.48E.2.1
Body Wire Harness

S.N.	Code and Specification of Parts	Parts Name	Quantity	Remark
1	RK554.48E.2.1	Body wire harness assembly	1	
2	RC500 48C.2.2	Central electrical box	1	
3	RC500 48C.055	Start relay	1	
4	RC500 48C.063	Instrument cluster assembly	1	
5	RC500 48C.071-2	Ful level sensor	1	
6	RC500 48D.2.3-1B	Left four-way switch	1	
7	RC500 48D.2.4A	Right four-way switch	1	
8	RC800 48C.021	Igition lock	1	
9	RK554.48E.034	Bracket welding (left)	1	
10	RC250 48X.025.1	Outline marker lamp assembly	2	PL 12318
11	RK554.48E.033	Bracket welding (right)	1	
12	RC400 48.262	Electric box cap	1	

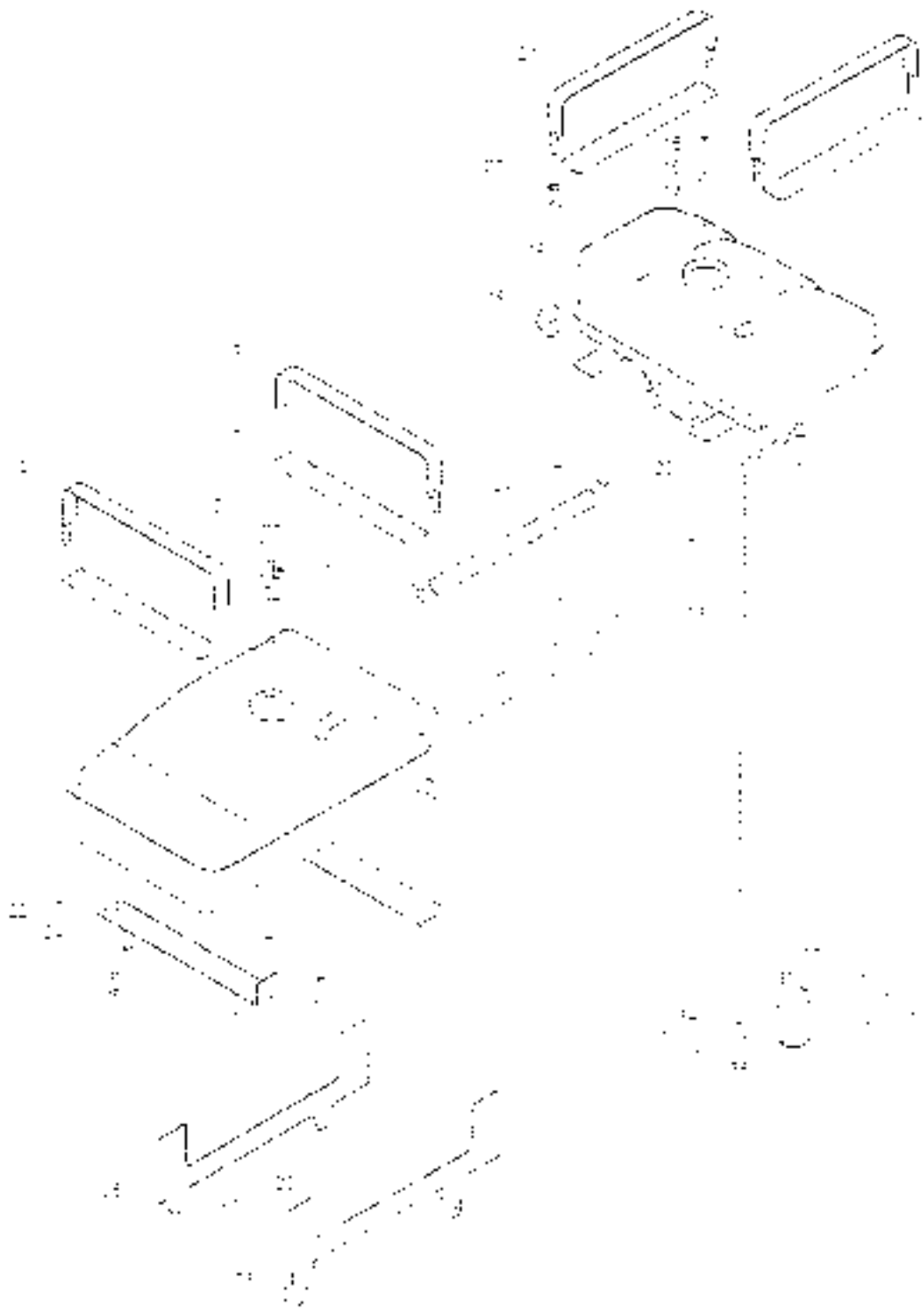
RC 550.50C.001
Fuel Tank and Bracket Assembly



RC550,50C,1001 Fuel Tank and Bracket Assembly

S.N.	Code and Specification of Parts	Parts Name	Quantity	Remark
1	RC550-50C-1	Auxiliary fuel tank welding	1	
2	RC550,50P-018	Auxiliary fuel tank band assembly 1	1	
3	RC404,50T-114	Fuel tank band rubber cushion	2	
4	RC400,50P-022	Front fixing bracket assembly of auxiliary fuel tank	1	
5	RC65-50-226	Drain plug	1	
6	JB 1982-1977	Compression washer 16	2	
7	RC550,50C-027	Fuel tank cover assembly	1	
8	RC65-50-023	Co. fiber strainer assembly	1	
9	RC400-50P-033	Rear fixing bracket assembly of auxiliary fuel tank	1	
10	RC550-50P-102	Fuel tank ventilation connecting pipe	1	
11	RC550-50P-019	Auxiliary fuel tank band assembly 2	1	
12	RC550-50P-105	Fuel tank connecting pipe	1	
13	JB 18870-1999	Clamp 25-28	2	
14	JB 18870-1999	Clamp 16-25	2	
15	GB 1819-1985	Screw M4x16	2	
16	GB 193-1987	Washer 4-Zn D	2	
17	GB 1971-2002	Washer 4-Zn D	2	
18	RC550,50H-1	Main fuel tank welding	1	
19	RC300,50-112	Rubber backing bars	8	
20	RC550-50P-152	Main fuel tank rubber cushion	2	
21	RC550,50P-5	Main fuel tank band assembly	2	
22	GB 16770-2000	Nut 10-Zn D	14	
23	GB 18-82-2000	Bolt M10x75	6	
24	GB 193-1987	Washer 10-Zn D	6	
25	RC400-50P-2011	Rigid bracket	1	

RC550.50C.001
Fuel Tank and Bracket Assembly Continued



RC550.50C-001
Fuel Tank and Bracket Assembly Continued

S/N	Code and Specification of Parts	Parts Name	Quantity	Remark
26	RC400.50P-2021	Left bracket	1	
27	RC300.50P74	Oil pipeline assembly 2	2	
28	RC65.48.095	Braiding rubber ring 1.1	1	
29	GB 7573-2000	Bolt M8x30-Zn.D	2	
30	GB 7427-087	Washer 8-Zn.D	2	
31	GB 1.871-2002	Washer 8-Zn.D	2	
32	GB 76170-2000	Nut M8	2	
33	RC68.50.106	Holder bolt M14x1.5	3	
34	GB962-18.1	Combination washer 14	6	
35	RC500.50-024	Diesel filter	1	

RC350.55C.001
Lillet Assembly (1)



RC550.55C.001
Lifter Assembly (1)

S.N.	Code and Specification of Parts	Parts Name	Quantity	Remark
1	RC550.55A.1	Lifter assembly	1	
2	GB T 3452.1	O-ring 22.5 x 1.50x1	4	
3	RC300.55B.028	Oil filler pipe welding	1	
4	GB T 93	Washer 8-AOP	5	
5	GB T 70.1	inner hexagon screw M18X25-A3L	2	
6	GB T 13527.1	fluid transportation rubber pipe ILS-8 0X1.5	1	600 in length
7	JB T 8870	Hose clamp d12	2	
8	RC500.55A.033	Breacher assembly	1	Borrowed
9	GB T 13578.1	Bolt M18X20-A3L	1	
10	GB T 93.1	Washer 8-AOP	1	
11	GB T 6170	Nut M18-A3L	1	
12	RC300.55B.029	Oil pipe plug assembly	1	
13	RC200.55B.022.1	Dipstick assembly	1	
14	GB T 93	Washer 12-AOP	12	
15	GB T 5783	Bolt M12X25-A3L	4	
16	GB T 5783.3	Bolt M18X35-A3L	2	
17	RC500.55B.13111	Oil delivery pipe nut	1	
18	JB T 882-1077	Washer combined washer 22	4	
19	RC300.55B.024A	Oil drain pipe welding assembly	1	
20	RC500.55.101	Flow valve	1	
21	RC500.55A.009	Hydraulic output joint (English system)	1	Borrowed
22	RC500.55SP.110	Transition joint (English system)	1	
23	GB T 5783	Bolt M17X40-A3L	2	
24	GB T 5783.2	Bolt M12X240-A3L	4	
25	GB T 5787	Bolt M17X100-A3L	2	
26	RC500.55A.064	Ball knob assembly	2	Borrowed

RC550.55C.001
Lifter Assembly (2)



RC550.55C 001
Lifter Assembly (2)

S/N	Code and Specification of Parts	Parts Name	Quantity	Remark
	RC550.55C 000	Control mechanism assembly	1	
1	GB 1 5783	Bolt M8x35-A3L	2	
2	GB 1 907	Washer 8-A00	2	
3	RC 550.55P.070-1	Control mechanism bracket welding part	1	
4	RC 550.55C 001	Control socket arm welding part 1	1	
5	RC 550.55P.032-1	Control socket arm welding part 2	1	
6	GB 1 894-1	A type clutch for shaft 21	1	
7	GB 1 887	Axis pin B8x30	2	
8	GB 1 2912	Pin 3x25-A00	4	
9	GB 1 907-1	Flange washer 8-A00	4	
10	RC 550.55P.023	Adjusting pul. arm welding part	2	
10-1	RC 550.55A.180	Rightward rotating sleeve	1	
10-2	GB 1 9170	Nut M10-A31	1	
10-3	RC 550.55P.137	Adjusting pul. rod	1	
11	GB 1 907	Washer 12-A00	2	
12	GB 1 5783	Bolt M12x70-A3L	2	

RC300A.56B.001 Suspension Mechanism Assembly (1)

S.N.	Code and Specification of Parts	Part Name	Quantity	Remark
1	RC300.56A.017	Left spacing link support welding-on unit	1	
2	RC300.56.107	Spring lockpin 2	4	
3	RC300.56A.102	Connecting pin of spacing link	2	
4	GB 193-1987	Washer 16	18	
5	GB 15785-2000	Bolt M16x40-Zn-D	8	
6	RC300.56A.016a	Limiting rod assembly	2	
6.1	RC300.56A.021a	Telescopic rod ball knob assembly	1	
6.2	RC300.56A.022	Limiting rod pin assembly	1	
6.3	RC300.56A.022a	Telescopic rod pin welding part	1	
6.4	GB 18170-2000	Nut M17	1	
6.5	RC300.56A.161	Limiting rod adjusting screw	1	
7	GB 1587-2000	Axis pin 815x33-Zn-D	2	
8	RC300A.56.012	Lower pull rod assembly	2	
9	GB 191-2000	Pin 4x30	4	
10	GB 1613-1986	Nut M10-Zn-D	4	
11	GB 1971-2002	Washer 20-200015-Zn-D	2	
12	GB 18171-2000	Nut M16x1.5	8	
13	GB 1898-1988	Nut hole AM16-M16x1.5x25.5-8	8	
14	RC300.56B.017	Left lower pull rod base welding part	1	
15	RC300.56B.014	Right lower pull rod base welding part	1	
16	RC300.56A.110B	Rear connecting pin of limiting rod	2	
17	RC300.56A.111a	Round plate	2	
18	RC300.56A.109	Right spacing link support welding-on unit	1	
19	RC300.56A.104	Unit	2	

RC500A.56B.001
Suspension Mechanism Assembly (2)



RC500A.56B.001
Suspension Mechanism Assembly (2)

S.N	Code and Specification of Parts	Parts Name	Quantity	Remark
1	RC500.56.105	Spring lockpin 2	2	
2	RC500.56A.101A	Upper connecting pin of lifting rod	2	
3	RC500.56A.015B	Lifting rod assembly	2	
3.1	RC500.56A.107B	Lifting rod upper connecting fork	1	
3.2	GB 16173-1	Nut M24x2	1	
3.3	RC500.56A.075A	Lifting rod screw tube welding	1	
3.4	GB 16173-1	Nut M24x2-LH	1	
3.5	RC500.56A.081A	Lifting rod down connecting fork	1	
4	RC500A.56.011B	Upper pull rod assembly	1	
6	RC500.56A.112	Down connecting pin of lifting rod	2	
8	RC500.56B.018-1	Upper pull rod fixing clip assembly	1	

RC450.58PH.002
Oil Pipe Assembly (1) of Oil Pump



RC450.58PH.002
Oil Pipe Assembly (1) of Oil Pump

S.N.	Code and Specification of Parts	Parts Name	Quantity	Remark
1	GB T 917-2000	Screw M8x35-Zn.D	2	
2	GB T 93-1987	Washer 8-Zn.D	10	
3	RC704.58L.010	Gear pump (left rotation)	1	
4	RC450.58X.015A	Oil suction short pipe welding	1	
5	GB T 5783-2000	Bolt M8x25-Zn.D	2	
6	RC450.58P.052	Pressure oil pipe assembly - I	1	
7	RC710.58X.101	Straight thread connector - body	2	
8	RC700.58X.104	Fuel suction hose	2	
9	ZB T 8670-1989	Hose clamp - d46	2	
10	RC450.58X.012C	Pressure oil pipe assembly	1	
11	RC100.58X.030	Oil filter assembly	1	
12	GB T 3452.1-1992	O-ring 21.2x1.80	1	
13	GB T 3452.1-1992	O-ring 15x2.65	2	
14	GB T 5783-2000	Bolt M8x35-Zn.D	2	
15	GB T 5783-2000	Bolt M8x20-Zn.D	2	
16	GB 1987-1987	Washer 8-300 (A)-Zn.D	2	

RC150.58PH.002
Oil pipe assembly (2) of oil pump

S.N.	Code and Specification of Parts	Parts Name	Quantity	Remark
1	IRC500.58A.056	Hydraulic output joint	1	
2	GB 1982-1977	A-type combination washer 22	1	
3	RC550.58A.301	Oil pipe joint	1	
4	GB 16173-2000	Nut M12x2-Zn D	1	
5	GB 15782-2000	Bolt M10x70-Zn D	1	
6	GB 192-1987	Washer 10-Zn D	1	
7	GB T6170-2000	Nut M10-Zn D	1	
8	IRC550.58H.024	Multway valve assembly	1	
9	IRC550.58H.024B	Multway valve bracket welding	1	
10	GB 15783-2000	Bolt M10x70-Zn D	1	
11	GB 192.1-2002	Washer 10-Zn D	1	
12	IRC550.58P.029.1	Multway valve control mechanism assembly	1	
13	IRC550.58P.043	Multway valve output oil pipe assembly	1	
14	IRC550.58P.042	Multway valve output oil pipe assembly	1	
15	IRC550.58P.041	Multway valve output oil pipe assembly	1	
16	IRC550.58P.040	Multway valve output oil pipe assembly	1	
17	KC301.85A.112	Straight thread connector - body	1	
18	GB 1982-1977	A-type combination washer 15	1	

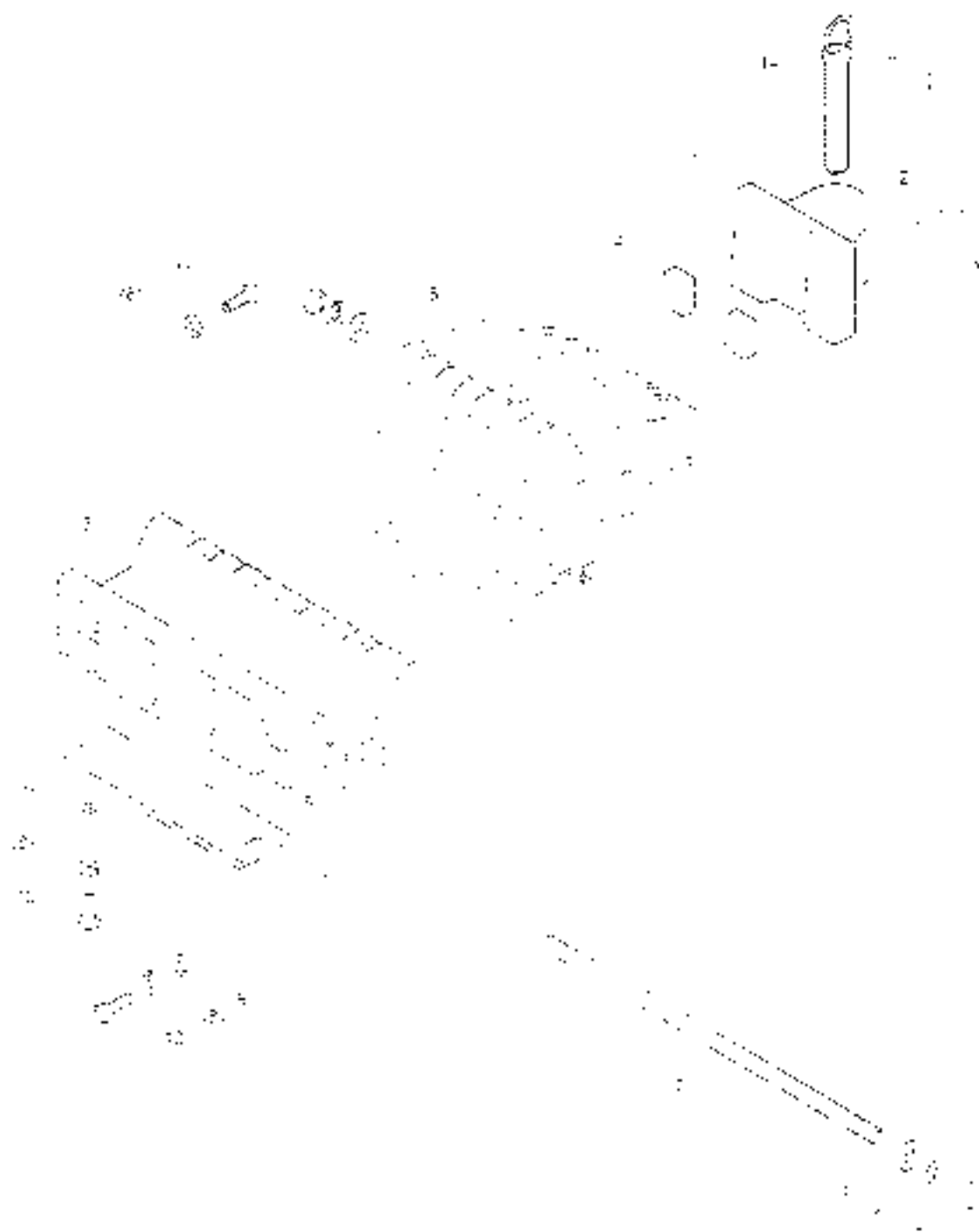
RC450.58PH.002
Oil Pipe Assembly (3) of Oil Pump



RC450.58PH.002
Oil Pipe Assembly (3) of Oil Pump

S N	Code and Specification of Parts	Parts Name	Quantity	Remark
1	GB T5783-2000	Bolt M8x40-Zn.D	2	
2	GB T93-1987	Washer 8-Zn.D	10	
3	GB T3452.1-1992	O-ring 19x2.6x3	1	
4	IRC550.58H.018A	Multway valve oil return pipe assembly	1	
5	IRC550.58H.021B	Multway valve output oil pipe assembly 1	1	
6	IRC800.58A.102	Straight thread connector - body	1	
7	IRC550.58H.023-2	Multway valve oil inlet pipe assembly 1	1	
8	JB 1932-1977	Washer 22	8	
9	IRC300.58.101	Hollow bolt	2	
10	IRC550.58H.012A	Multway valve output oil pipe assembly 2	1	
11	IRC450.58X.011B	Oil suction pipe welding	1	
12	IRC550.58H.013C	Multway valve oil inlet pipe assembly 2	1	

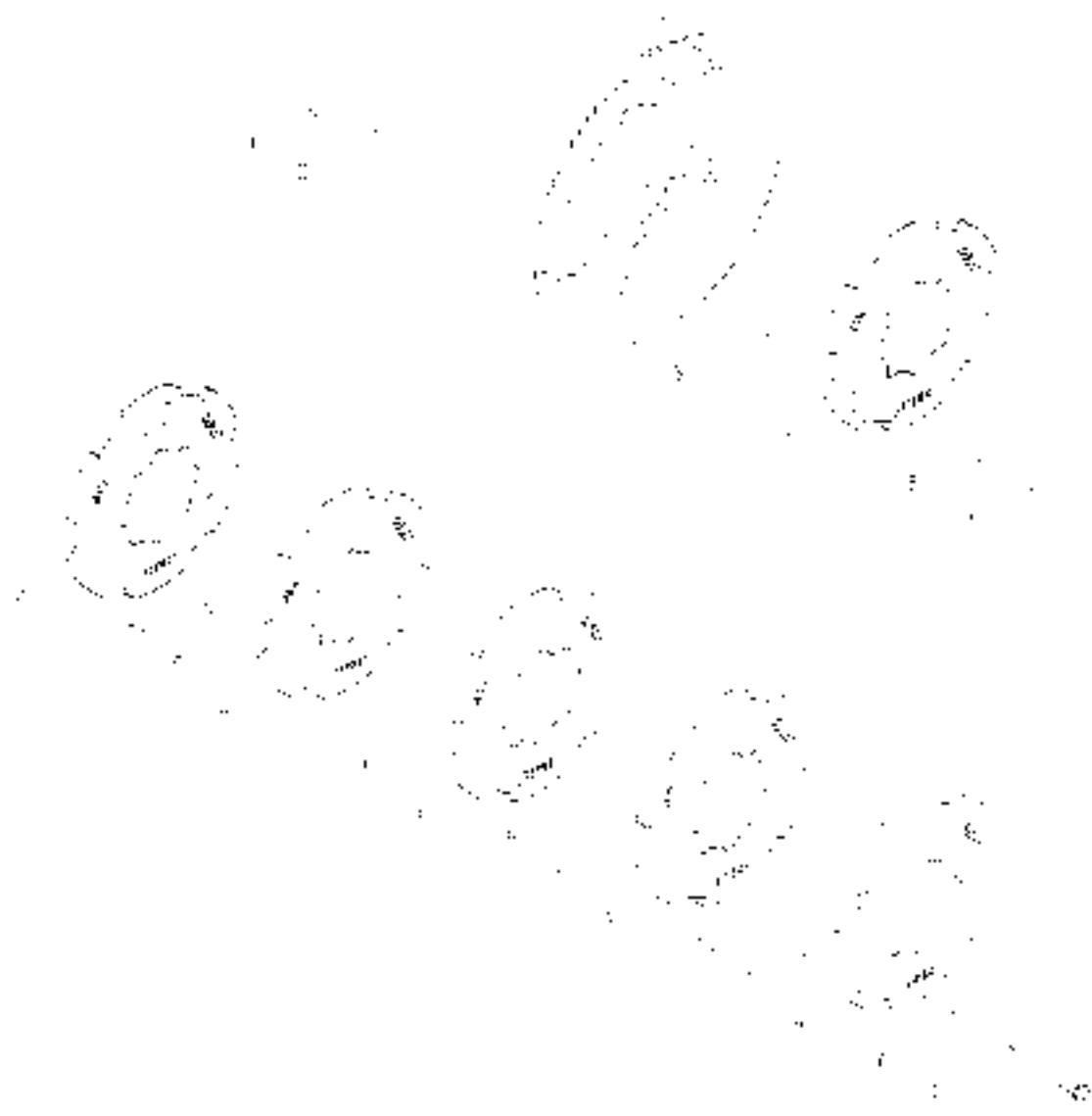
RC404.74.001A
Front Weights Assembly



RC404.74.001A From Weights Assembly

S. No.	Code and Specification of Parts	Parts Name	Quantity	Remark
1	RC 300 74A 110B	Traction lug	1	
2	GB 15785-2000	Bolt M20x1.5x80 Zn.D	2	
3	GB T93-1987	Washer 70	2	
4	RC 650 74.108	Traction nut	2	
5	RC 300 74A 106A	Counterweight block	8	
6	RC 300 74A 101A	Counterweight frame	1	
7	GB 16170-2000	Nut M16 Zn.D	2	
8	GB T93-1987	Washer 16	12	
9	GB T97.1-2002	Washer 16-200HV-Zn D	2	
10	RC 404 74A 108	Connecting bolt	1	
11	GB 15782-1000	Bolt M16x55 Zn.D	8	
12	RC 300 74A 107	Fixed frame	1	
13	GB 15785-2000	Bolt M16x40 Zn D	4	
14	RC 300 74A 010	Traction pin welding	1	

RC300.91.001
Rear Weights Assembly



RC300.91.001

Rear Weights Assembly

S.N	Code and Specification of Parts	Parts Name	Quantity	Remark
1	GB T0171	Bolt M16X1.5-A32	3	
2	GB T93	Washer 16	6	
3	RC300 91.103	Rear counterweight screw	3	
4	RC300 91.101A	Rear counterweight	6	
5	RC300 91.102	Rear counterweight screw 1	18	
6	RC300 91.104	Washer	18	
7	GB T5786	Bolt M16X1.5X30-A32	3	

Parts Catalogue of RK404-A/RK454-A/RK504-A Wheeled Tractor

Prepared by Chery Heavy Industry Co., Ltd.

Internal materials Keep carefully

Format:880 x 1230 1/16 Number: RK.LJ-00.1

1st Edition of 2013; first printed in June 2013

CHERY

FOR A GREEN FUTURE

CHERY HEAVY INDUSTRY CO.,LTD.

Add.: No.16 Exi Rd, Sanshan economic development zone, Wuhu City, Anhui Province.

Manufacturer: Chery Heavy Industry Henan Co.,Ltd

Plant site: No.98 Songcheng Rd, Kaifeng City, Henan Province.

Sales hotline: (86)10-63707028

Service hotline: (86)10-63707178

E-mail:sales@cheryhi.com

Website: www.cheryhi.cn

<https://tractormanualz.com/>