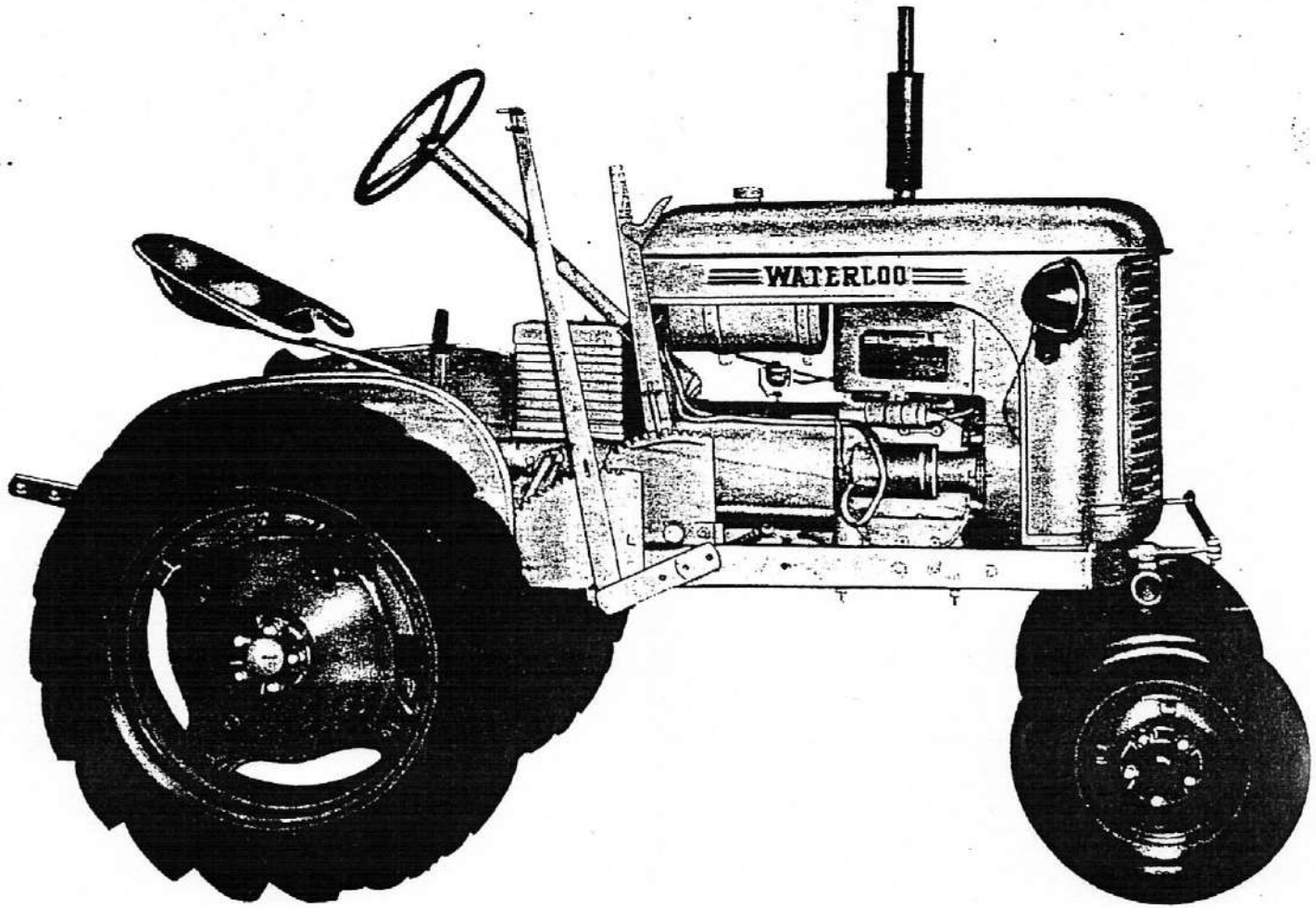


THE

"BRONCO" TRACTOR

MADE IN
CANADA



ENGINE—2 cylinder, 4 cycle Air Cooled Wisconsin 11.2 H.P. at 2600 R.P.M.

CLUTCH—Single plate 6½" disc type.

TRANSMISSION—3 speeds forward, 1 reverse.

DIFFERENTIAL—Heavy duty, Automotive type.

CROP CLEARANCE—21½".

FIXED FRONT END—36" wheel centers.

ADJUSTABLE FRONT END—34" to 54" centers.

TURNING RADIUS—7'6" with brake.

SPEEDS—1st gear, 2⅓ M.P.H.; 2nd gear, 3¼ M.P.H.; 3rd gear, 7 M.P.H.

BRAKES—Individual brakes on each rear wheel.

STEERING—Worm and sector type.

DRAW BAR—Swinging Type.

STARTER and LIGHTS—(Can be supplied with crank starter).

TIRES—4.00 x 12 Front; 7 or 8 x 24 rear.

REAR POWER TAKE-OFF and PULLEY.

WEIGHT—Approx. 1500 lbs.

IMPLEMENT LIFT—Manual or Hydraulic.

THE WATERLOO MANUFACTURING CO. LTD.

WATERLOO - ONTARIO

ILLUSTRATION INDEX

	Page No.
FRONT WHEEL & HUB ASSEMBLY	1
FIXED FRONT AXLE & TIE ROD ASSEMBLY	3
ADJUSTABLE FRONT AXLE & TIE ROD ASSEMBLY	5
REAR END DIFFERENTIAL	7
DRIVE & DIFFERENTIAL SHAFTS, HOUSINGS & BRAKE	9
TRANSMISSION — SERIAL NO. 101 to 500	11
TRANSMISSION & DIFFERENTIAL — SERIAL NO. 501 up	13
BRAKE ROD, CLUTCH ROD & CROSS-SHAFT ASSEMBLY	15
FRAME ASSEMBLY	17
BASE HOOD & CRANK	19
TOOL BOX	21
LAMPS & ACCESSORIES	21
INSTRUMENT PANEL & THROTTLE CONTROL	23
BATTERY BOX & INSTRUMENT PANEL — SERIAL NO. 701 up	25
BATTERY BOX & WIRING	27
STEERING CONTROL	29
STEERING — DRAG LINK & MOUNTING BRACKET	31
CLUTCH & POWER TAKE-OFF PULLEY	33
BULL GEAR HOUSING & REAR AXLE	35
CLUTCH RELEASE FORK ASSEMBLY	37
ENGINE HOOD	37
GAS TANK & ACCESSORIES	39
FENDERS	41
RIDING SEAT	41
GRILL	43
MUFFLER	43
REAR WHEEL	45
DRAW BAR	47

THE WATERLOO MANUFACTURING COMPANY RESERVES THE RIGHT TO IMPROVE ITS PRODUCTS BY CHANGES IN MATERIALS OR DESIGN. RECORDS OF THESE CHANGES ARE KEPT BY SERIAL NUMBER BREAKING POINTS. IN ORDER THAT CORRECT REPLACEMENT PARTS MAY BE FURNISHED IT IS THEREFORE **ESSENTIAL** THAT SERIAL NUMBER BE QUOTED WHEN ORDERING PARTS.

Figure and Reference No.	Part No.	DESCRIPTION	No. Pcs.
FRONT WHEEL AND HUB ASSEMBLY			
	A158-450	Front Wheel Tire—400 x 12 - 2 ply	2
	A158-451	Tractor Implement tube for 4.00 x 12 tire with No. TR-217 Valve for Calcium Filling	2
1-1	A158-449	Wheel Rim and Disc 12 x 3.00—C9882-5	2
1-2	B158-48	Front Wheel Hub	2
1-3	A127-312	Front Wheel Hub Bolt 7/16"—20 T.P.I. x 1 1/8"	10
1-4	A158-452	Bearing Cone—07100	4
1-5	A158-453	Bearing Cup—07196	4
1-6	A158-454	Oil Seal—"P"—212112	2
1-7	A158-375	Hub Cap No. 3888	2
1-8		Light Hex. S.F. Slotted Nut 1"—14 T.P.I.	2
1-9		Cotter Pin 3/16 dia. x 2"	2
	A158-473	4 Way Rim Wrench—306	1

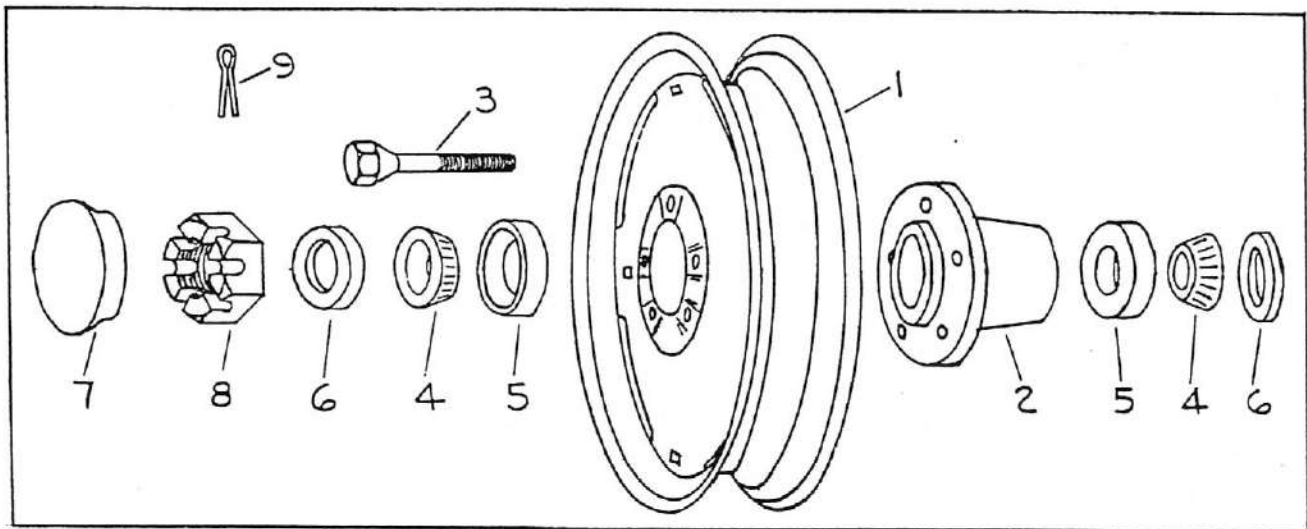


Fig. No. 1—Front Wheel & Hub Assembly

Ref. No.	Part No.	Page No.
1	A158-449	1
2	B158-48	1
3	A127-312	1
4	A158-452	1
5	A158-453	1
6	A158-454	1
7	A158-375	1
8		1
9		1

Figure and Reference No.	Part No.	DESCRIPTION	No. Pcs.
FIXED FRONT AXLE AND TIE ROD ASSEMBLY			
2-1	C158-272	Fixed Front Axle Ass'y.	1
2-2	B158-31	Front Wheel Spindle R.H.	1
2-3	B158-32	Front Wheel Spindle L.H.	1
2-4		Woodruff Key No. 807	2
2-5	A158-19	Spindle Turning Arm R.H.	1
2-6	B158-25	Spindle Arm & Ball Extension Ass'y.	1
2-7		Cap Screw $\frac{3}{8}$ "—16 N.C. x 2"	2
2-8		Lockwasher $\frac{3}{8}$ "	2
2-9		Hex. S.F. Nut $\frac{3}{8}$ "—16 N.C.	2
2-10	B158-275	Tie Rod Fixed Axle Ass'y.	1
2-11		Hex. S.F. Jam Nut $\frac{3}{8}$ "—18 N.F.	1
2-12	A158-55	Adjustable Yoke End	1
2-13	A158-59	Tie Rod Connecting Pin on Serial No. 201 to 500	2
	A158-483	Tie Rod Connecting Pin on Serial No. 101 to 200	2
2-14		Cotter Pin $\frac{1}{8}$ " dia. x 1"	2
2-15	B158-274-1	Bunting Bearing No. E598 $1\frac{3}{8}$ " O.D. x 1" I.D. x $1\frac{1}{2}$ " lg.	4
2-16		Alemite Grease Fitting No. 1608 Drive Type	2
2-17	A158-26	Ball (Spindle Arm Extension)	1
2-18		King Pin Washer Std. Plain Washer for $1\frac{1}{4}$ " Bolt 3" O.D. x $1\frac{3}{8}$ " I.D.	1
2-19		King Pin Cotter $5/16$ dia. x 2"	1

Ref. No.	Part No.	Page No.	Ref. No.	Part No.	Page No.
1	C158-272	2	11		2
2	B158-31	2	12	A158-55	2
3	B158-32	2	13	A158-59	2
4		2		A158-483	2
5	A158-19	2	14		2
6	B158-25	2	15	B158-274-1	2
7		2	16		2
8		2	17	A158-26	2
9		2	18		2
10	B158-275	2	19		2

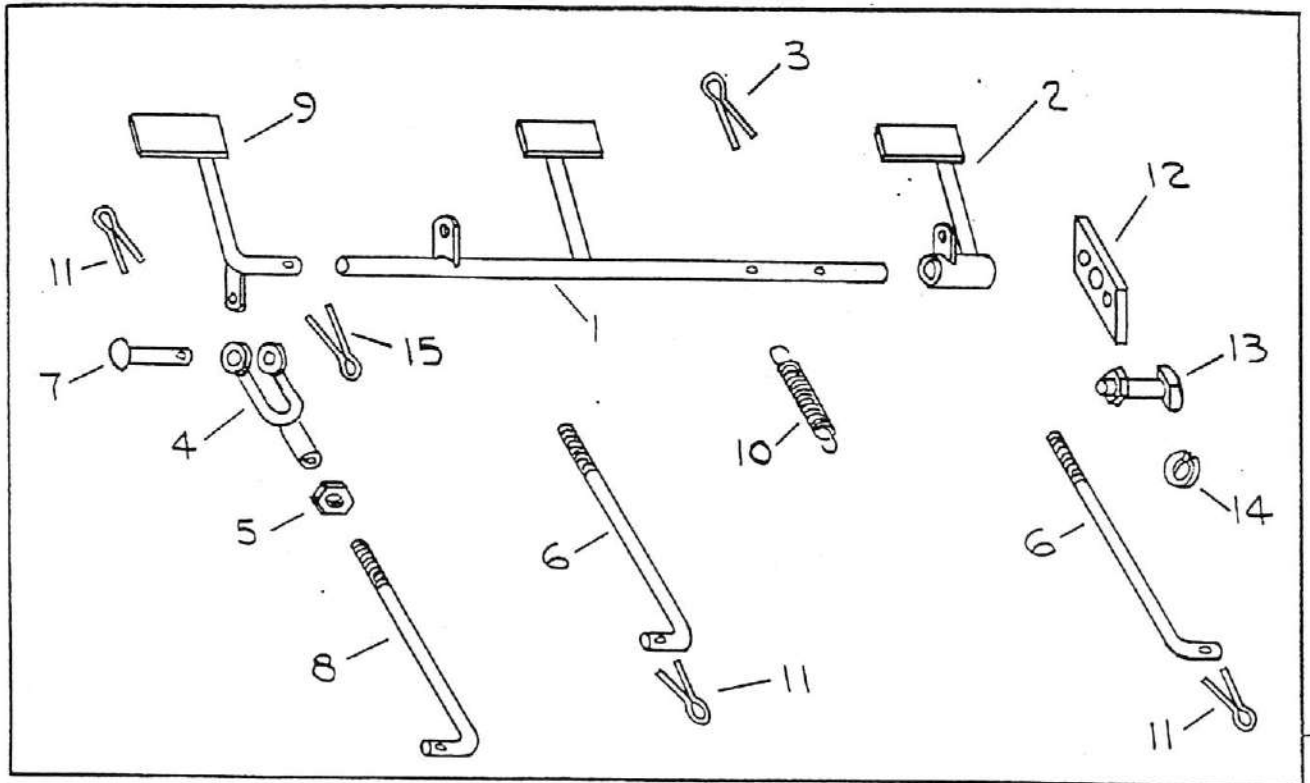


Fig. No. 8—Brake Rod — Clutch Rod & Cross-Shaft Assembly

Ref. No.	Part No.	Page No.
1	B158-174	14
	B158-288	14
2	A158-193	14
3		14
4	A158-196-200-2	14
5		14
6	A158-197	14
	A158-279	14
7	A158-199	14
8	A158-201	14
9	A158-202	14
	A158-330	14
	B158-395	14
10	SP-381	14
11		14
12	A158-198	14
13		14
14		14
15		14

Figure and Reference No.	Part No.	DESCRIPTION	No. Pcs.
FRAME ASSEMBLY			
9-1	C158-117	Frame and Platform Assembly (used on Serial Nos. up to 500)	1
	C158-285	Frame Ass'y. less platform (used on Serial Nos. 501 up)	1
9-2		Alemite Grease Fitting No. 1641- $\frac{1}{4}$ "-28	1
9-3	B158-114	Engine Mounting Plate (used on Serial Nos. up to 500)	1
	B158-289	Engine Mounting Plate (used on Serial Nos. 501 up)	1
9-4		Mach. Bolt with Nut $\frac{3}{8}$ "-11 N.C. x 3"	2
9-5		Lockwasher $\frac{5}{8}$ "	2
9-6		Mach. Bolt with Nut $\frac{1}{2}$ "-13 N.C. x $1\frac{3}{4}$ "	4
		Machine Bolt with Nut $\frac{1}{2}$ "-13 N.C. x $2\frac{1}{2}$ "	4
9-7		Lockwasher $\frac{1}{2}$ "	4
9-8		Plain Washer $\frac{1}{2}$ "	4
9-9	B158-133	Frame Cross Brace Assembly	1
9-10		Mach. Bolt with Nut $\frac{1}{2}$ "-13 N.C. x $1\frac{3}{4}$ "	4
9-11		Lockwasher $\frac{1}{2}$ "	4
9-12	A158-240	Crank Clip	2
9-13		Self Tapping Screw Type "F" No. 10-24 x $\frac{1}{2}$ "	2
		Model TE Wisconsin Engine (See Page 14)	1
9-14	A158-484	Flat Hd. Mach. Screw $\frac{1}{4}$ "-20 N.C. x $\frac{1}{2}$ "	3
9-15	B158-317	Pipe Clip—3041	1
		Platform only (Serial Nos. 501 up)	1
SAFETY FIRST			
REMEMBER A CAREFUL OPERATOR ALWAYS IS THE BEST INSURANCE AGAINST AN ACCIDENT			

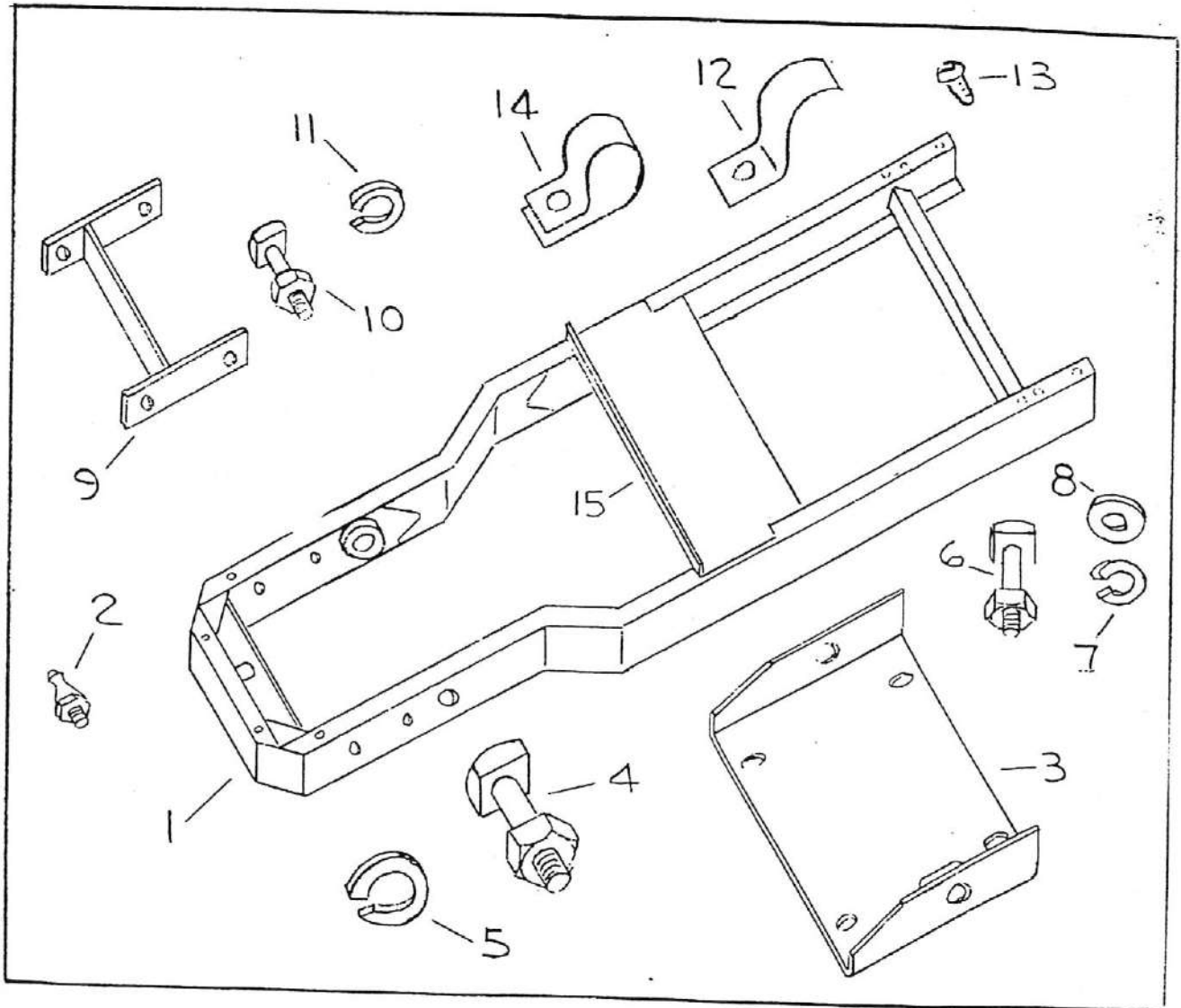


Fig. No. 9—Frame Assembly

Ref. No.	Part No.	Page No.	Ref. No.	Part No.	Page No.
1	C158-117	16	9	B158-133	16
	C158-285	16	10		16
2		16	11		16
3	B158-114	16	12	A158-240	16
	B158-289	16	13		16
4		16	14	A158-484	16
5		16	15	B158-317	16
6		16			
7		16			
8		16			

Figure and Reference No.	Part No.	DESCRIPTION	N Pc
		BASE HOOD AND CRANK	
10-1	B158-40	Base Hood	1
10-2	A158-113	Crank Support	2
10-3		Cap Screw $\frac{3}{8}$ "-16 N.C. x 1" (Used on Serial No. up to 501)	2
10-4		Cap Screw $\frac{3}{8}$ "-16 N.C. x $1\frac{1}{2}$ " (Used on Serial Nos. 501 up)	2
10-5		Lockwasher $\frac{3}{8}$ "	2
10-6		Mach. Bolt with Nut $\frac{3}{8}$ "-16 N.C. x $1\frac{3}{4}$ "	2
10-7		Mach. Bolt with Nut $\frac{1}{2}$ "-13 N.C. x $2\frac{1}{2}$ "	2
10-8		Lockwasher $\frac{3}{8}$ "	2
10-9		Lockwasher $\frac{1}{2}$ "	2
10-10		Bevelled Washer for $\frac{3}{8}$ " dia. bolt	2
10-11	A158-112	Bevelled Washer for $\frac{1}{2}$ " dia. bolt	2
10-12		Crank Adapter	2
10-13	B158-155	Soc. Type Set Screw C.P. $\frac{3}{8}$ "-16 N.C. x $\frac{3}{8}$ "	2
10-14	A158-360	Crank Assembly	1
		Crank Support Filler (used on Serial No. 501 up)	1

THE WATERLOO MANUFACTURING COMPANY RESERVES THE RIGHT TO IMPROVE ITS PRODUCTS BY CHANGES IN MATERIALS OR DESIGN. RECORDS OF THESE CHANGES ARE KEPT BY SERIAL NUMBER BREAKING POINTS. IN ORDER THAT CORRECT REPLACEMENT PARTS MAY BE FURNISHED IT IS THEREFORE **ESSENTIAL** THAT SERIAL NUMBER BE QUOTED WHEN ORDERING PARTS.

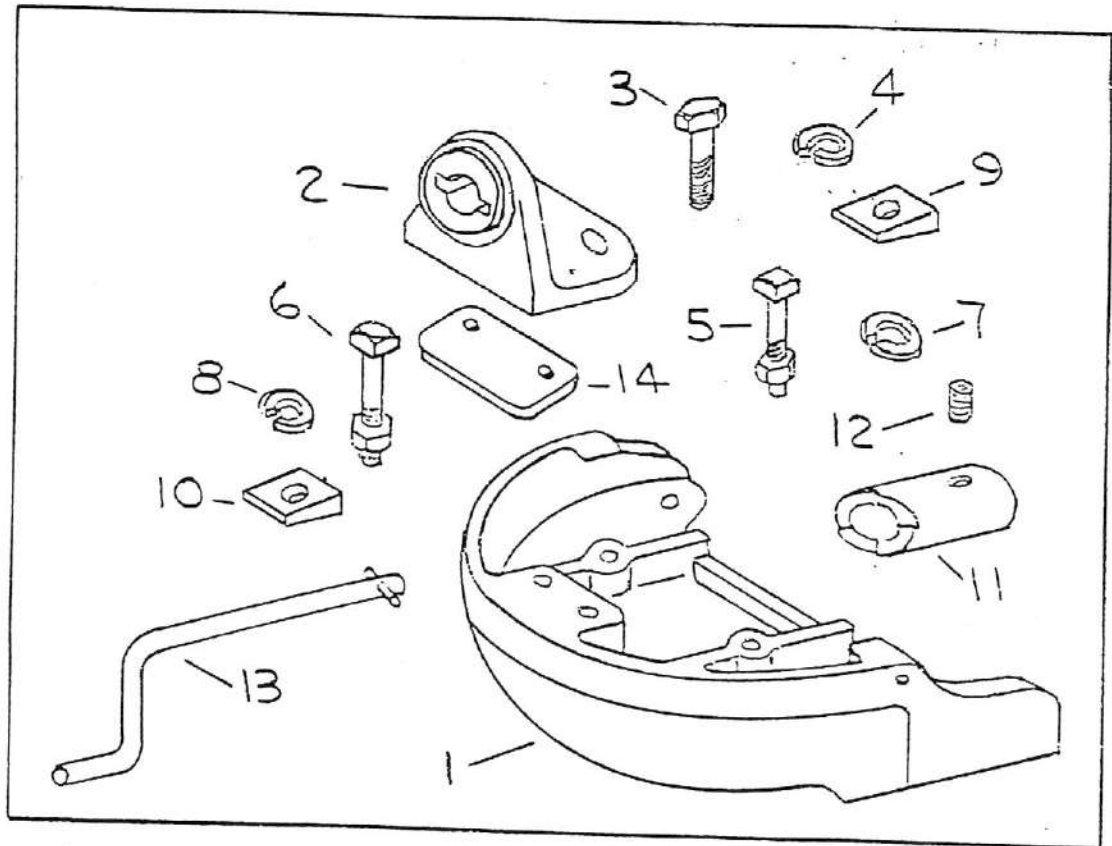


Fig. No. 10—Base Hood & Crank

Ref. No.	Part No.	Page No.
1	B158-40	18
2	A158-113	18
3		18
4		18
5		18
6		18
7		18
8		18
9		18
10		18
11	A158-112	18
12		18
13	B158-155	18
14	A158-360	18

Figure and Reference No.	Part No.	DESCRIPTION	No. Pcs.
		TOOL BOX	
11-1	C158-211	Tool Box Ass'y. on Serial No. 101 to 400	1
11-2		Hex. Semi Fin. Nut $\frac{3}{8}$ "-16 N.C.	2
11-3		Std. Spring Lockwasher for $\frac{3}{8}$ " dia. bolt	2
11-4	B158-215	Tool Box Door Ass'y. on Serial No. 101 to 400	1
11-5	B158-267	Tool Box Body on Serial No. 401 to 500	1
11-6		Sq. Hd. Mach. Bolt with H.P. Hex. Nut Reg. $\frac{1}{4}$ "-20 N.C. x $\frac{3}{4}$ "	2
11-7		Std. Spring Lockwashers for $\frac{1}{4}$ " dia. bolt	2
11-8		Std. Plain Washer for $\frac{1}{4}$ " dia. bolt	2
		LAMPS AND ACCESSORIES	
12-1	A158-477	Sealed Beam Tractor lamp—A7220	3
12-2		Rd. Hd. Mach. Screw $\frac{5}{16}$ "-18 N.C. x $\frac{3}{4}$ "	4
12-3		Rd. Hd. Mach. Screw $\frac{1}{4}$ "-20 N.C. x $\frac{3}{4}$ "	2
12-4		Hex. Semi Fin. Nut— $\frac{5}{16}$ "-18 N.C.	4
12-5		Hex. Semi Fin. Nut— $\frac{1}{4}$ "-20 N.C.	2
12-6		Std. Plain Washer $\frac{5}{16}$ "	4
12-7		Std. Plain Washer $\frac{1}{4}$ "	2
12-8		Std. Spring Lockwasher $\frac{5}{16}$ "	4
12-9		Std. Spring Lockwasher $\frac{1}{4}$ "	2
12-10	A153-479	Pipe Clip—For headlamp wiring #302	4
12-11	A158-480	Lamp Wiring Loom fastener #1341-3	2
12-12	A158-481	Terminal #870821	2
12-13	A158-482	Terminal Sleeve #870822	4
12-14	A158-485	Rubber Terminal Cover	3
12-15	A158-495	Sealed Beam Unit	3
12-16	A153-366	Rear Light Bracket	6
			3
			1
		SAFETY FIRST	
		LIFE IS SHORT, AN ACCIDENT CAN MAKE IT SHORTER	

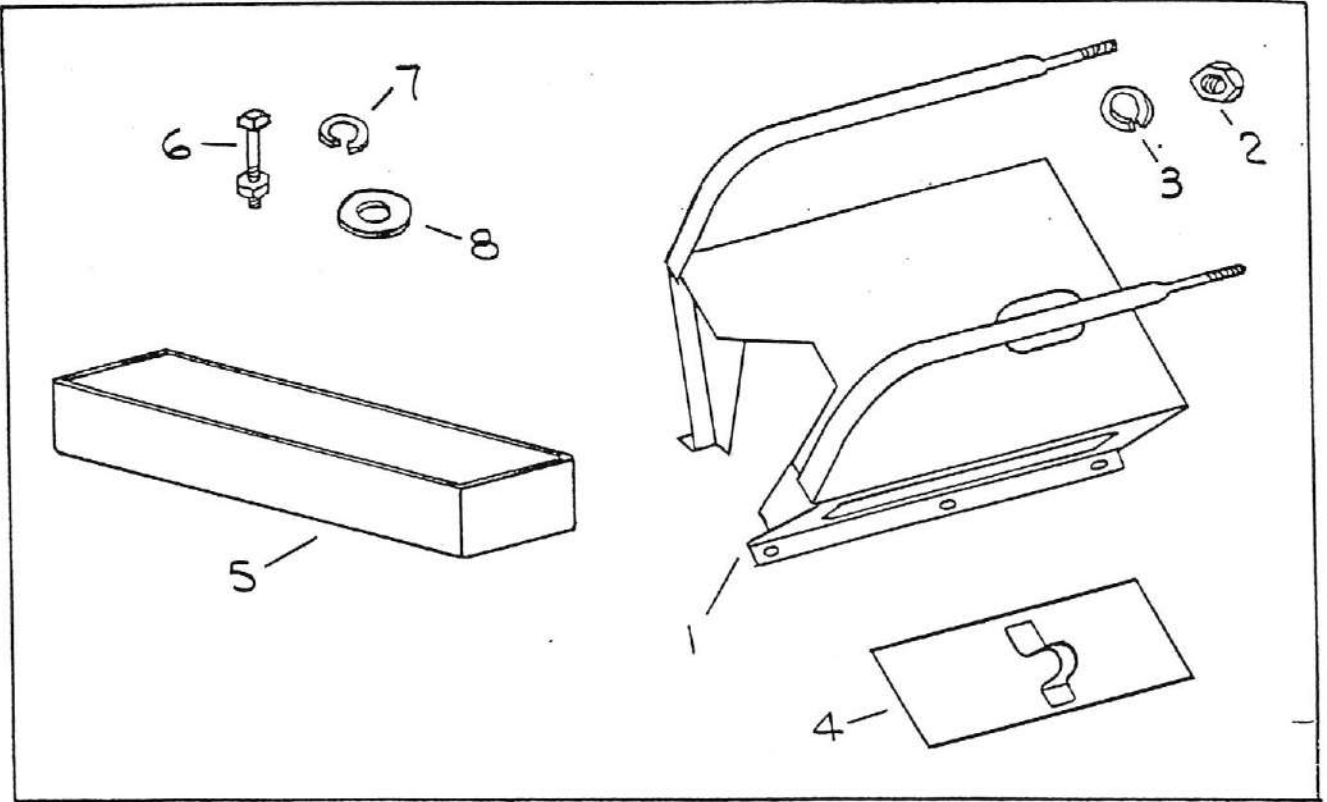


Fig. No. 11—Tool Box

Ref. No.	Part No.	Page No.	Ref. No.	Part No.	Page No.
1	C158-211	20	5	B158-267	20
2		20	6		20
3		20	7		20
4	B158-215	20	8		20

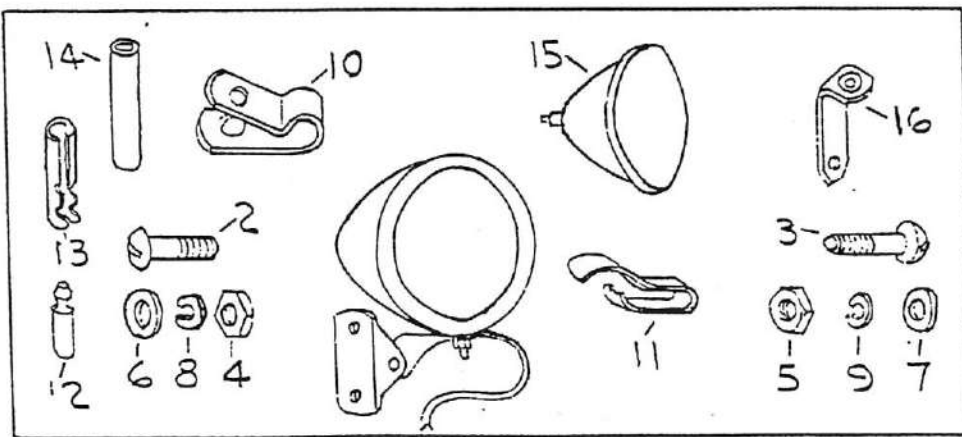


Fig. No. 12—Lamps & Accessories

Ref. No.	Part No.	Page No.
1	A158-477	20
2		20
3		20
4		20
5		20
6		20
7		20
8		20
9		20
10	A158-479	20
11	A158-480	20
12	A158-481	20
13	A158-482	20
14	A158-485	20
15	A158-495	20
16	A158-366	20

Figure and Reference No.	Part No.	DESCRIPTION	No. Pcs.
INSTRUMENT PANEL AND THROTTLE CONTROL			
13-1	C158-81	Instrument Panel Assembly (Serial Nos. 101-500)	1
	C158-219	Instrument Panel Ass'y. (Serial Nos. 501-700)	1
13-2		Rd. Hd. Mach. Screw 1/4"-20 N.C. x 1/2" (Inst. Panel to Eng. Hood)	2
13-3		Rd. Hd. Mach. Screw 1/4"-20 N.C. x 3/4" (Inst. Panel to Eng. Hood)	2
13-4		Hex. Nut 1/4"-20 N.C. (Inst. Panel to Eng. Hood)	2
13-5		Lockwasher 1/4"	4
13-6	A158-478	Fused Light Switch Heavy Duty Push-Pull—5053 on Serial No. 401 to 500	1
	A158-478A	Fused Light Switch Heavy Duty Push-Pull—5011 on Serial No. 101 to 400	1
	A158-478B	Fuse Block—4714 on Serial No. 101 to 400	1
	A158-478C	Self Tapping Screw No. 8—32 N.C. x 3/8" Fuse Block to Pan on Serial No. 101 to 400	1
13-6A	A158-493	Fuse—20 Amp. 6 Volt	1
13-7	A158-392	Ignition Switch	1
13-8	A158-422	Starter Button	1
13-9	A158-487	Ampmeter	1
13-10		Rd. Hd. Mach. Screw 1/4"-20 N.C. x 1/2" For Mtg. Starter	2
13-11		Hex. S.F. Jam Nut 1/4"-20 N.C. for Mtg. Starter	2
13-12		Lockwasher 1/4"	2
13-13	A158-488	Choke Wire	1
13-14	B158-208	Throttle Control Rod (Serial Nos. 101 to 400)	1
13-15	B158-265	Throttle Control Rod (Serial Nos. 401 to 700)	1
	B158-402	Throttle Control Rod (Serial Nos. 701 up)	1
13-16	A158-209	Throttle Control Knob	1
13-17	A153-163	Throttle Tension Spring	1
13-18		Cotter Pin 1/16" dia. x 3/4"	1
13-19		Rd. Hd. Mach. Screw 1/4"-20 N.C. x 1/2"	1
13-20		Hex. S.F. Nut 1/4"-20 N.C.	1
13-21		Lockwasher 1/4"	1
	A127-67	Name Plate—Type—Model No.—Serial No.	1
		Rd. Hd. Self Tapping Screw—No. 4-40 x 1/4" (See back of Front Cover) Type "F"	2
		Cap Screws 3/8"-16 N.C. x 3/4" (Serial Nos. 501 up) (Instrument panel to clutch housing)	2
		Lockwasher 3/8" (Serial Nos. 501 up) (Instrument panel to clutch housing)	2

SAFETY FIRST

A CAREFUL OPERATOR IS THE BEST
INSURANCE AGAINST AN ACCIDENT

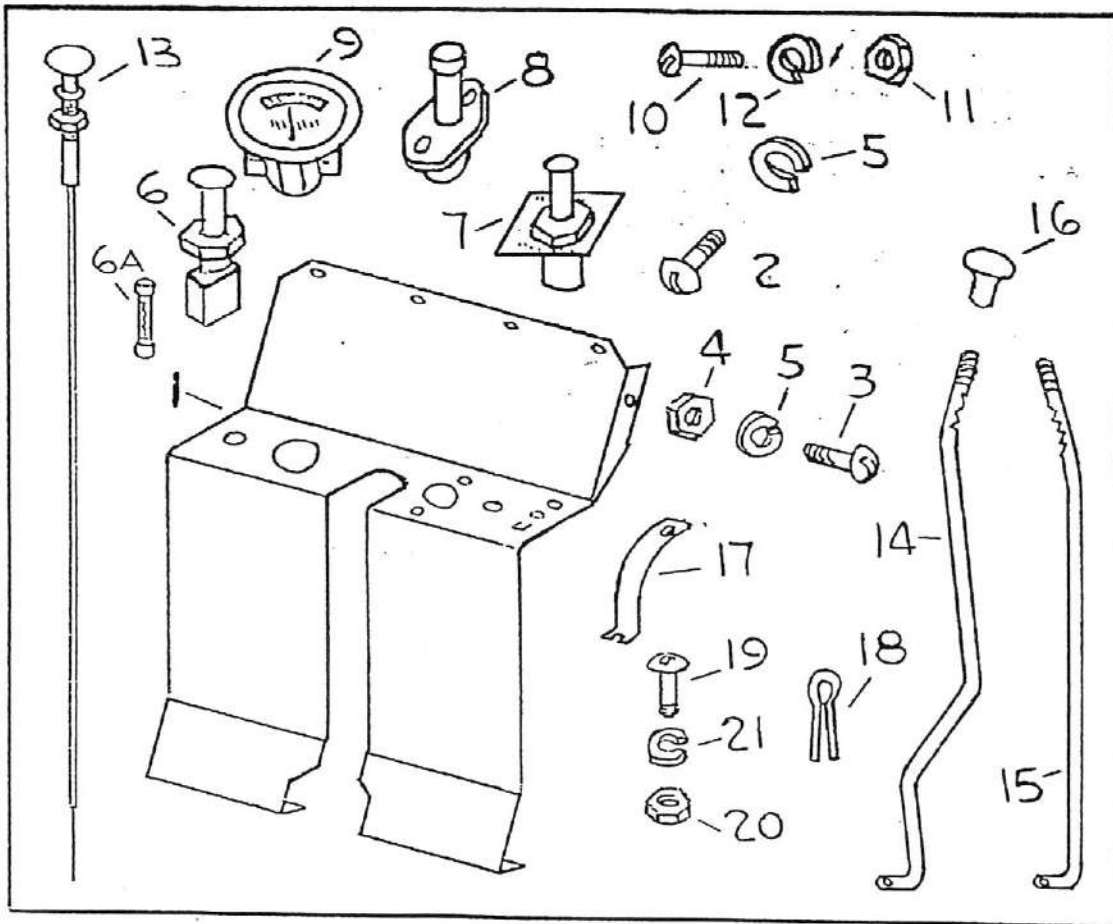


Fig. No. 13—Instrument Panel & Throttle Control

Ref. No.	Part No.	Page No.	Ref. No.	Part No.	Page No.
1	C158-81	22	10		22
	C158-219	22	11		22
2		22	12		22
3		22	13	A158-488	22
4		22	14	B158-208	22
5		22	15	B158-265	22
6	A158-478	22		B158-402	22
	A-158-478A	22	16	A158-209	22
	A158-478B	22	17	A158-163	22
	A158-478C	22	18		22
6A	A158-493	22	19		22
7	A158-392	22	20		22
8	A158-422	22	21		22
9	A158-487	22			

Figure and Reference No.	Part No.	DESCRIPTION	No. Pcs.
BATTERY BOX AND WIRING			
14-1	C158-416	Battery Box Assembly	1
14-2	B158-427	Instrument Panel Ass'y.	1
14-3	A158-426	Battery Box Baffle	1
14-4	A158-431	Shakeproof Pan Hd. Thrd. Cutting "Sems" Screw Type #1—#6-32 N.C.	16
		Battery Box Support	1
		Hex. Hd. Mach. Bolt 1/4"-20 N.C. x 1/2"	3
		H.P. Hex. Nut Reg. 1/4"-20 N.C.	3
		Std. Spring Lockwasher for 1/4" dia. bolt	3
		Flat Hd. Mach. Screw 1/4"-20 N.C. x 1/2"	4
14-5	A158-425	Battery Top Clamp	2
14-6		Std. Plain Washer for 3/16" dia. bolt	2
14-7	A158-430	Wing Nut 3/16"-24 N.C. Thrd.	2
14-8	A158-434 A158-492	Battery Box Lid	1
		Shakeproof Lockwasher #1110-00 External—Plain Finish	2
		Shoulder Thumb Screw 3/16"-24 N.C. x 1/2" sh.	2
		Battery Box Hold Bar	1
		Battery Box Nut	2
		Countersunk Lockwasher 1/4"	4
		Gasket (Battery Box to Hood)—3/16" x 3/4" x 2 1/2" Sponge Rubber	2

SAFETY FIRST

NEVER ATTEMPT TO CLEAN, OIL OR ADJUST
A MACHINE WHILE IN MOTION

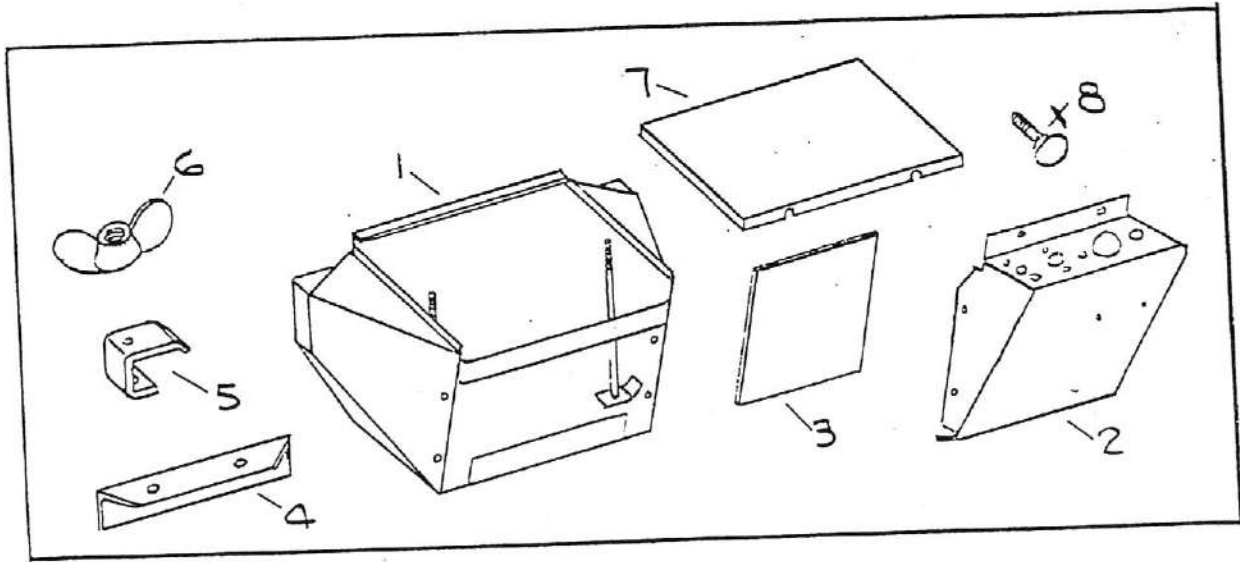


Fig. No. 14—Battery Box & Instrument Panel

Ref. No.	Part No.	Page No.
1	C158-416	24
2	B158-427	24
3	A158-426	24
4	A158-431	24
5	A158-425	24
6		24
7	A158-430	24
8		24

Figure and Reference No.	Part No.	DESCRIPTION	No. Pcs.
BATTERY BOX AND WIRING			
15-1	C158-146-6	Battery Box Assembly (Serial Nos. 101-500)	1
15-2	C158-146-5	Battery Box Lid Ass'y. (Serial Nos. 101-500)	1
	B158-325	Battery Cover (Serial Nos. 501-700)	1
15-3		Wing Nut 5/16"-18 N.C. (Serial Nos. 101-500)	2
		Wing Nut 3/16"-24 N.C. (Serial Nos. 501 up)	2
15-4		Plain Washer 5/16"	2
	A158-328-1	Battery Hold Down Bolt (Serial Nos. 501-700)	2
15-5		Cap Screw 3/8"-16 N.C. x 3/4"	2
15-6		Lockwasher 3/8"	2
	A158-474	6 Volt Battery 1M-80	1
15-7	A158-355	Starter to Switch Cable 33 1/4" lg. (Serial No. 401-700)	1
	A158-405	Starter to Switch Cable 40" lg. (Serial Nos. 101-400 and 701 up)	1
15-8	A158-476	Switch to Battery Cable 72" lg. (Serial Nos. 101-500)	1
	A158-356	Switch to Battery Cable 10 1/4" lg. (Serial Nos. 501 up)	1
15-7	A158-357	Battery to Ground Cable 12" lg. (Serial Nos. 101-700)	1
	A158-406	Battery to Ground Cable 17" lg. (Serial Nos. 701 up)	1
	C158-314	Wiring Harness Complete (Serial Nos. 101-700)	1
	C158-407	Wiring Harness Complete (Serial Nos. 701 up)	1
15-10	C158-314-1	Fuse Block to Light Switch (Serial Nos. 101-400)	1
15-11	C153-314-2	Lighting Harness only (Serial Nos. 101-700)	1
	C158-407-1	Lighting Harness only (Serial Nos. 701 up)	1
15-12	C158-314-3	Ignition Harness only (Serial Nos. 101-700)	1
	C158-407-2	Ignition Harness only (Serial Nos. 701 up)	1

SAFETY FIRST

NEVER ATTEMPT TO CLEAN, OIL OR ADJUST
A MACHINE WHILE IN MOTION

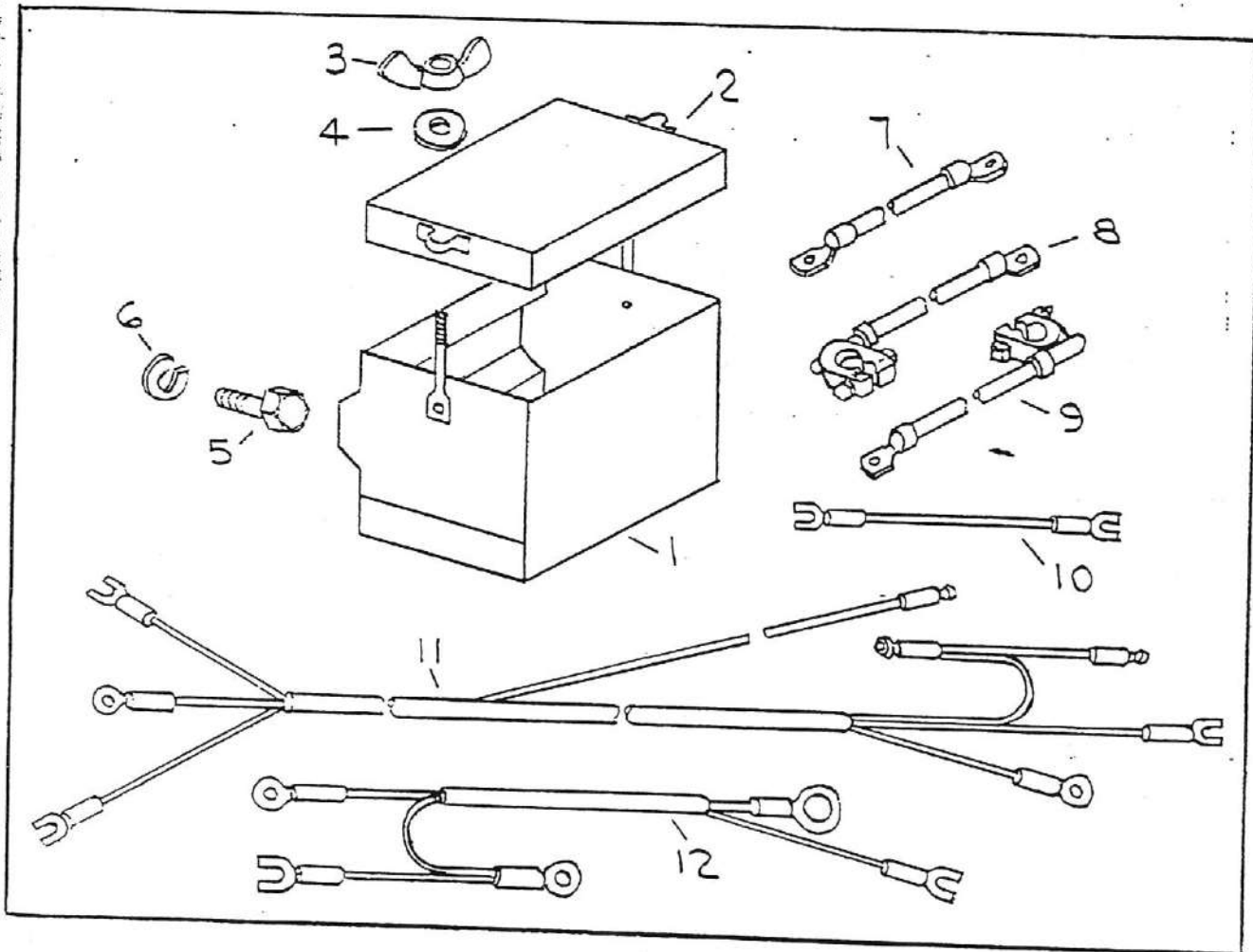
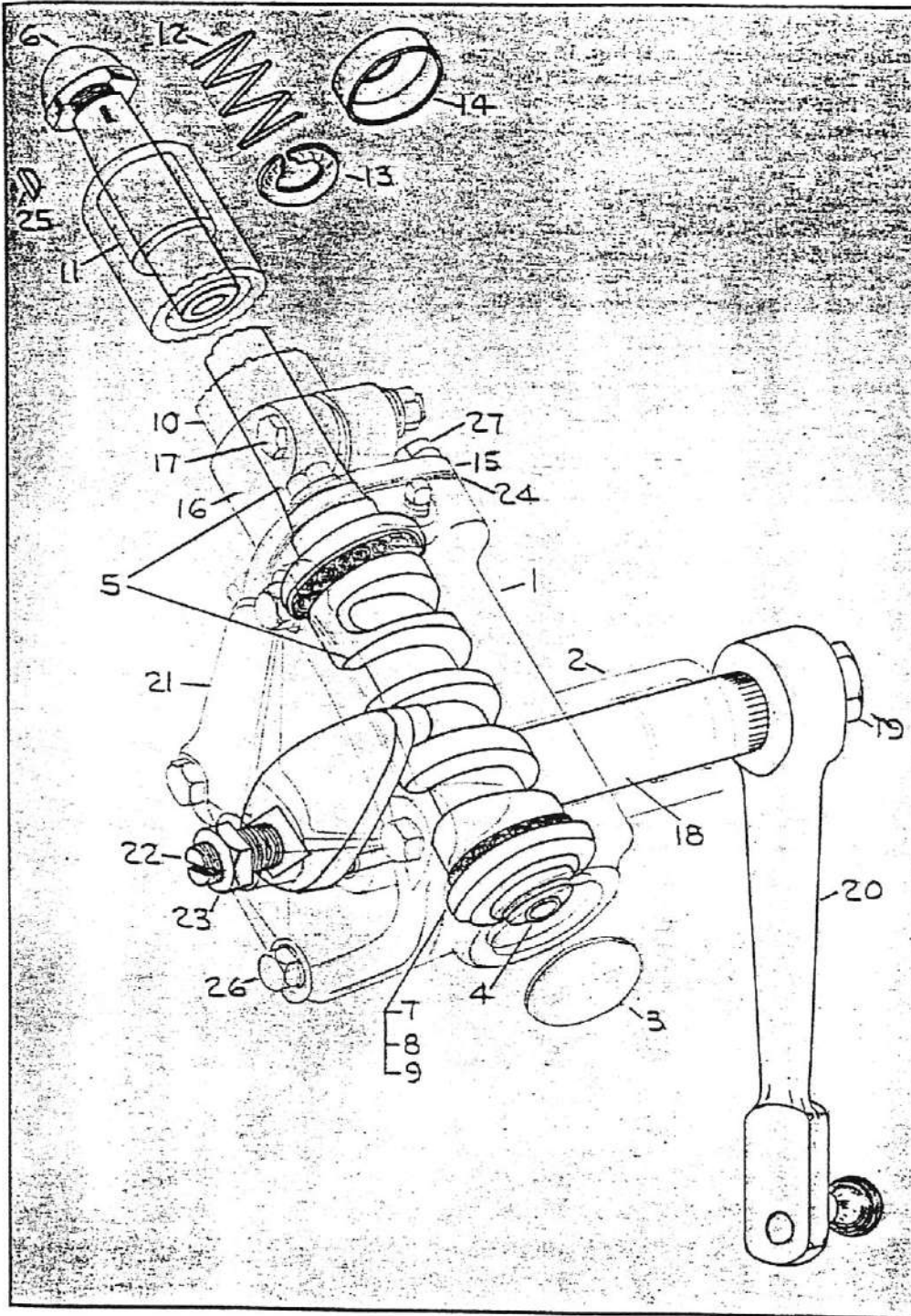


Fig. 15—Battery Box & Wiring

Ref. No.	Part No.	Page No.
1	C158-146-6	26
2	C158-146-5	26
	B158-325	26
3		26
4		26
5		26
6		26
7	A158-355	26
	A158-405	26
8	A158-476	26
	A158-356	26
9	A158-357	26
	A158-406	26
10	C158-314-1	26
11	C158-314-2	26
	C158-407-1	26
12	C158-314-3	26
	C158-407-2	26

Figure and Reference No.	Part No.	DESCRIPTION	No. Pcs.
STEERING CONTROL			
16-1	505473	Housing Assembly (Serial Nos. 101-700)	1
	505751	Housing Assembly (Serial Nos. 701- up)	1
	S122018	Housing N.S.S. (Serial Nos. 101-700)	1
	S122019	Housing N.S.S. (Serial Nos. 701 up)	1
16-2	063011	Lever Shaft Bushing—Inner	1
	063012	Lever Shaft Bushing—Outer	1
16-3		Expansion Plug—1 1/4"	1
16-4	504000	Oil Seal Unit	1
	032075	Oil Seal	1
	032101	Oil Seal Gasket	1
	9204-30	Cam & Wheel Tube Ass'y. w/Bearings (Serial Nos. 101-700)	1
	9204-20-3/4	Cam & Wheel Tube Ass'y. w/Bearings (Serial Nos. 701 up)	1
16-5	9203-30	Cam & Wheel Tube Ass'y. 30" Ig. (Serial Nos. 101-700)	1
	9203-20-3/4	Cam & Wheel Tube Ass'y. 20 3/4" Ig. (Serial Nos. 701 up)	1
	S123091	Cam N.S.S.	1
	086023	Wheel Tube 25-1/16" Ig. N.S.S. (Serial Nos. 101-700)	1
	086023	Wheel Tube 16-7/16" Ig. N.S.S. (Serial Nos. 701 up)	1
16-6	025055	Wheel Nut	1
16-7	400027	Ball Cup	1
16-8	401101	Retaining Ring	1
16-9	400013	Balls—5/16 dia.	20
16-10	9183	Jacket Tube Ass'y. 23-9/16" Ig. (Serial Nos. 101-700)	1
	9183-14-5/16	Jacket Tube Ass'y. 14-5/16" Ig. (Serial Nos. 701 up)	1
	095137	Jacket Tube 23 1/2 N.S.S. (Serial Nos. 101-700)	1
16-11	061993	Jacket Tube 14 1/2 N.S.S. (Serial Nos. 701 up)	1
16-12	401134	Spring	1
16-13	028155	Spring Seat	1
16-14	029068	Wheel Skirt Cup	1
16-15	T126000	Housing Upper Cover	1
16-16	502052	Jacket Tube Clamp Ass'y.	1
	475104	Jacket Tube Clamp	1
16-17	021104	Cap Screw 5/16"-24 N.F. x 1 3/8"	1
		Hex. Nut 5/16-24 N.F.	1
		Lockwasher 5/16"	1
16-18	8720	Lever Shaft Assembly 6 3/4" Ig. (Serial Nos. 101-700)	1
	8720-4-1/2	Lever Shaft Assembly 4 1/2" Ig. (Serial Nos. 701 up)	1
	S124003	Lever Shaft 6 3/4" Ig. N.S.S. (Serial Nos. 101-700)	1
	S124003	Lever Shaft 4 1/2" Ig. N.S.S. (Serial Nos. 701 up)	1
16-19	025060	Lever Shaft Nut	1
		Lockwasher 3/8"	1
16-20	424058-38	Steering Arm Ass'y. 8" Centres	1
	424058	Steering Arm N.S.S.	1
	042038	Ball Stud N.S.S.	1
	504257	Housing Side Cover Assembly	1
16-21	S125002	Housing Side Cover	1
16-22	021116	Adjusting Screw	1
16-23		Locknut 7/16"-20 N.F.	1
	404254	Steering Wheel—15"	1
16-24	033046	Upper Cover Shim .002	1
	033047	Upper Cover Shim .003	1
	033048	Upper Cover Shim .010	1
	A158-456	Grease Fitting	1
16-25	038601	Wheel Key	1
16-26	020041	Cap Screw 5/16" 18 N.C. x 1"	4
16-27	020028	Cap Screw 5/16" 18 N.C. x 3/4"	3
		Lockwasher 5/16"	7
	S129000	Side Cover Gasket	1
	S13142	Steering Control—Complete—28 1/4"	
	S13176	Steering Control—Complete—19 1/4"	

Note: Items marked "N.S.S." are components of an assembly which can not be serviced separately. If these parts are required it will be necessary to purchase the assembly.



Page No.	Part No.	Ref. No.
1	505473	28
	505751	28
2	063011	28
	063012	28
3		28
4	504000	28
	032075	28
	032101	28
5	9203-30	28
	9203-20-3/4	28
6	025055	28
7	400027	28
8	401101	28
9	400013	28
10	9183	28
	9183-14-5/16	28
	095137	28
11	061993	28
12	401134	28
13	028155	28
14	029068	28
15	T126000	28
16	502052	28
17	021104	28
18	8720	28
	8720-4-1/2	28
19	025060	28
20	424058-38	28
21	S125002	28
22	021116	28
23		28
24	033046	28
	033047	28
	033048	28
25	038601	28
26	020041	28
27	020028	28

Fig. No. 16—Steering Gear

Figure and Reference No.	Part No.	DESCRIPTION	No. Pcs.
STEERING — DRAG LINK AND MOUNTING BRACKET			
17-1	B158-141	Steering Drag Link Ass'y. (Serial Nos. 101-500)	1
	B158-282	Steering Drag Link Ass'y. (Serial Nos. 501-700)	1
	B158-389	Steering Drag Link Ass'y. (Serial Nos. 701 up)	1
17-2	A158-46	Ball Sockets	2
17-3	A158-47	Adj. Ball Sockets	2
17-4		Cotter Pin 1/8" dia. x 1 1/2"	2
17-5		Grease Fitting No. 195A-1/4"-28	2
		Cap Screw 7/16"-14 N.C. x 1"	2
		Lockwasher 7/16"	2
17-6	B158-153	Steering Column Support (Serial Nos. 101-500)	1
	B158-363	Steering Column Support (Serial Nos. 501-700)	1
17-7	A158-154	U Bolt	1
		Hex. S.F. Nut 5/16"-18 N.C.	2
		Lockwasher 5/16"	2
		Cap Screws 1/4"-20 N.C. x 3/8"	2
		Lockwasher 1/4"	2

SAFETY FIRST

YOUR SAFETY DEPENDS ON HOW CAREFUL
YOU ARE, NOT HOW LUCKY

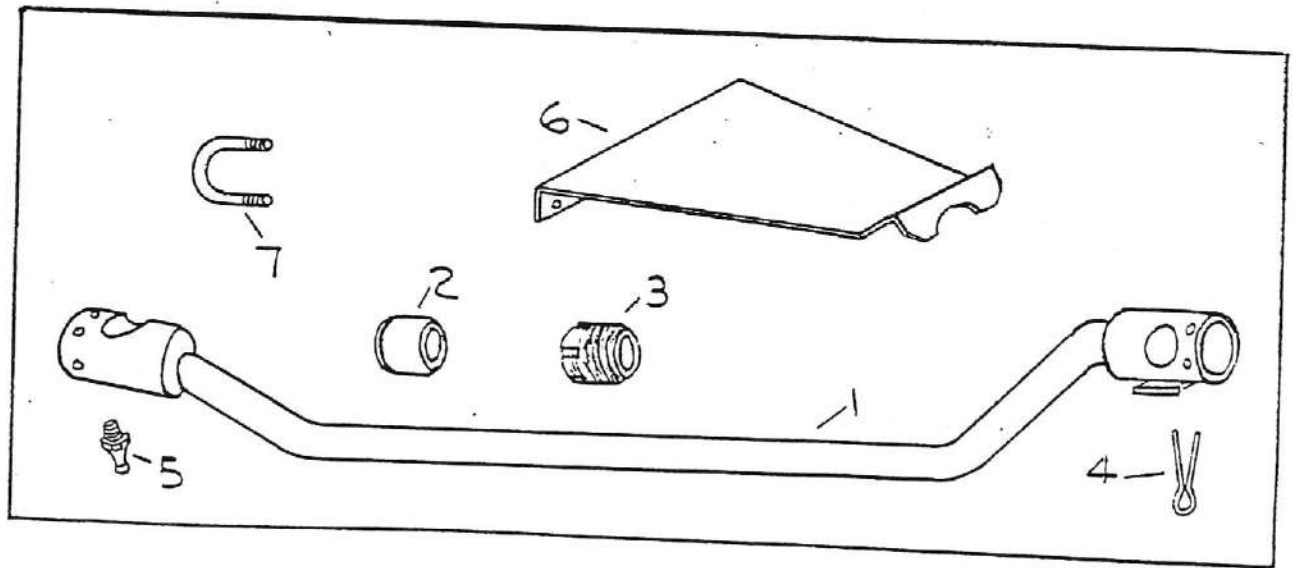


Fig. No. 17—Steering — Draw Link & Mounting Bracket

Ref. No.	Part No.	Page No.
1	B158-141	30
	B158-282	30
	B158-389	30
2	A158-46	30
3	158-47	30
4		30
5		30
6	B158-153	30
	B158-363	30
7	A158-154	30

Figure and Reference No.	Part No.	DESCRIPTION	No. Pcs.
CLUTCH AND POWER TAKE-OFF PULLEY			
18-1	A158-334	Motor Key $\frac{3}{8}$ " Sq. x 3-7/16" lg. (Used with Crankshaft Pulley)	1
18-2	C158-210	Power Take-Off Pulley	1
		Soc. Type Set Screw C.P. 7/16"-14 N.C. x $\frac{1}{2}$ "	1
		Soc. Type Set Screw C.P. 7/16"-14 N.C. x $\frac{3}{8}$ "	1
18-3	B158-3	Clutch Adapter	1
18-4	B158-3-1	Clutch Adapter Brg. A1053-2-.630 I.D. x 1.066 O.D. x 1" lg.	1
18-5	A158-457-2	Clutch Disc Assembly CL-4229-2 (Serial Nos. 101-700)	1
	A158-500-2	Clutch Disc Assembly (Serial 701 up)	1
18-6	A158-457-1	Clutch (Less Disc Ass'y.)-SLA-1938-1.A.C. (Serial Nos. 101-700)	1
	A158-500-1	Clutch (Less Disc Ass'y.) (Serial Nos. 701 up)	1
		Cap Screw 5/16"-18 N.C. x $1\frac{1}{4}$ "	6
		Cap Screw 5/16"-18 N.C. x $\frac{3}{4}$ "	2
		Lockwasher 5/16"	6
		Hex. Nut 5/16"-18 N.C.	6
18-7	A158-453	Rockford Clutch Release Bearing Ass'y. UCL-4635-2	1
18-8	B158-83	Clutch Housing & Steering Bracket Ass'y.	1
	B153-361	Clutch Housing & Steering Bracket Ass'y. Serial Nos. 501-700)	1
	B158-394	Clutch Housing Assembly (Serial Nos. 701 up)	1
18-9	B158-97	Clutch Housing Cover Assembly	1
18-10	A158-303	Clutch Release Bearing Sleeve (Serial Nos. 501 up)	1
		Lockwasher $\frac{1}{4}$ "	4
		Cap Screw $\frac{1}{4}$ "-20 N.C. x $\frac{1}{2}$ "	4
		Cap Screw 7/16"-14 N.C. x $1\frac{1}{4}$ "	4
		Cap Screw 7/16"-14 N.C. x 2"	4
		Hex Nut 7/16"-14 N.C.	4
		Lockwasher 7/16"	8

Note:—The Bronco clutch is precision built to rigid S.A.E. specifications to give years of trouble free service.

We advise against any attempt, to service the clutch in the field.

You will save both time and money by returning clutch (where possible) to the factory for service, where the special equipment and know-how required are available.

THE WATERLOO MANUFACTURING CO. LTD.

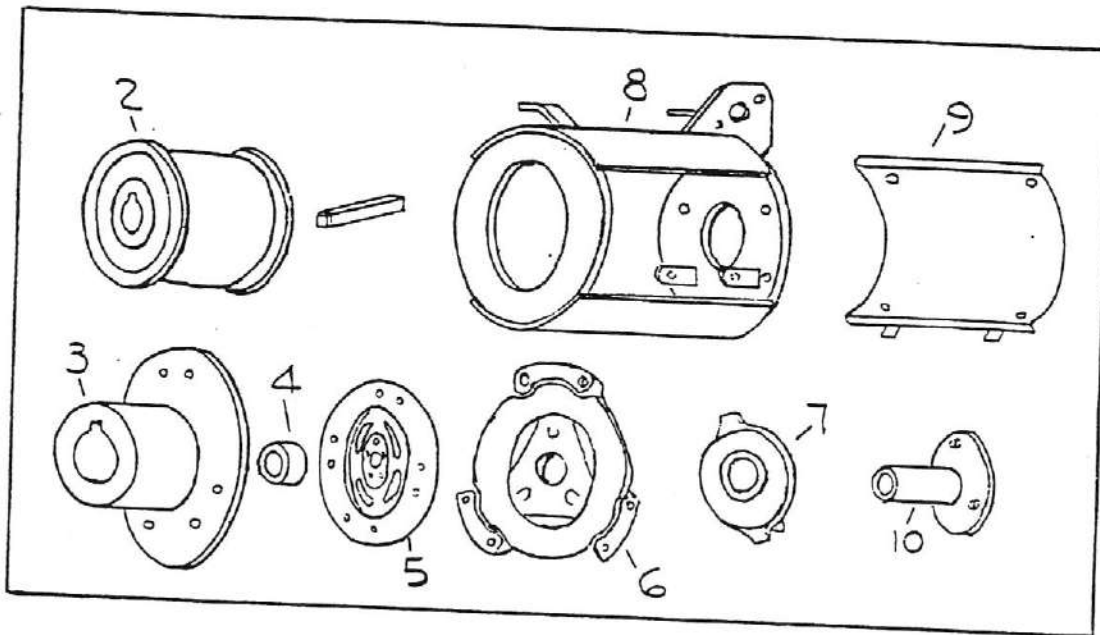


Fig. No. 18—Clutch & Power Take-Off Pulley

Ref. No.	Part No.	Page No.
1	A158-334	32
2	C158-210	32
3	B158-3	32
4	B158-3-1	32
5	A158-457-2	32
	A158-500-2	32
6	A158-457-1	32
	A158-500-1	32
7	A158-458	32
8	B158-83	32
	B158-361	32
	B158-394	32
9	B158-97	32
10	A158-308	32

Figure and Reference No.	Part No.	DESCRIPTION	No. Pcs.
BULL GEAR HOUSING & REAR AXLE			
19-1	B158-76	Rear Axle Shaft (used up to serial No. 500)	2
	C158-297	Rear Axle Shaft (used on Serial No. 501 up)	2
19-2	A158-442	Oil Seal 30622	2
19-3	A158-444	Bearing Cup—24720	2
19-4	A158-446	Bearing Cone—24780	2
19-5	B158-23	Bull Gear—Welded (used up to serial No. 500)	2
	C158-296	Bull Gear Ass'y.—Cast (used on Serial No. 501 up)	2
	C158-295	Bull Gear Ring only (used on Serial No. 501 up)	2
	C158-296-1	Bull Gear Centre only (used on Serial No. 501 up)	2
	C158-296-2	Bull Gear Pin (used on Serial No. 501 up)	6
19-6	A158-105	Spacer Washer 1 5/8 I.D. x 3 O.D. x 1/8" thick	2
19-7	A158-443	Spacer Washer 1 5/8 I.D. x 2 3/8 O.D. x 1/32 thick (Use as req.)	4
19-8		Woodruff Key #297 3/8 x 1 11/16" (up to Serial No. 200)	2
19-9		Woodruff Key #1212 3/8 x 1 1/2 (Serial No. 201 up)	2
19-10	A158-445	Bearing Cup—15245	2
19-11	A158-447	Bearing Cone—15123	2
19-12	A158-116	Hex. Slotted Nut 1"-14 N.F.	2
		Cotter Pin 3/16 dia. x 2"	2
19-13	A158-80	Diff. Shaft Outer Bearing—Bronze—E598 (up to Serial No. 500)	2
19-14	A158-494	Diff. Shaft Outer Bearing—Ball—6305 N.R. (used on Serial No. 501 up)	2
19-15	A158-441	Expansion Plug—1 3/8" (used up to Serial No. 500)	2
19-16	A158-311	Bearing Cap (used on Serial No. 501 up)	2
19-17	A158-312	Bearing Cap Gasket (used on Serial No. 501 up)	2
		Cap Screw Hex Hd. 1/4"-20 N.C. x 3/4"	8
		Lockwasher 1/4"	8
19-18	A158-375	Hub Cap	2
19-19		Grease Fitting #1637 1/4"-28 T.P.I.	2
19-20	C158-75-1	Bull Gear Housing R.H.—welded (Used on Serial Nos. 101-300; 351-375 & 497)	2
	C153-75-2	Bull Gear Housing L.H.—welded (Used on Serial Nos. 101-300; 351-375 & 497)	2
19-21	Z158-300-1	Bull Gear Housing R.H.—Cast (Used on Serial Nos. 301-350; 376-496; 498-500)	2
	Z158-300-2	Bull Gear Housing L.H.—Cast (Used on Serial Nos. 301-350; 376-496; 498-500)	2
	D158-281-1	Bull Gear Housing L.H.—Cast (Used on Serial Nos. 501 up)	2
	D158-281-2	Bull Gear Housing R.H.—Cast (Used on Serial Nos. 501 up)	2
19-22	A158-463	Oil Pan Gasket (Used on Serial Nos. 101-300; 351-375 and 497)	2
	A158-258	Oil Pan Gasket (Used on Serial Nos. 301-350; 376-496; 498 and up)	2
19-23	B158-58	Oil Pan Assembly (Used on Serial Nos. 101-300; 371-375 & 497)	2
	B158-251	Oil Pan Assembly (Used on Serial Nos. 301-350; 376-496 & 498 up)	2
19-24	A158-65	Gasket—Bull Gear Housing to Axle Housing	2
19-25		Pipe Plug 3/8 N.P.T.	4
19-26		Cap Screw 5/8"-18 N.F. x 4"	4
		Cap Screw 5/8"-18 N.F. x 1 3/4"	4
		Lockwasher 5/8"	4
		Cap Screw 1/4"-20 N.C. x 1/2" (Serial Nos. 101-300; 351-375 and 497)	20
		Cap Srew 1/4"-20 N.C. x 1" (Serial Nos 301-350; 376-496 and 498 up)	20
		Hex. Nut 1/4"-20 N.C.	20
		Lockwasher 1/4"	20
		Machine Bolt with Nut 1/2"-13 N.C. x 2" (Serial Nos. 701 up.)	1
		Machine Bolt with Nut 1/2"-13 N.C. x 1 3/4"	8
		Lockwasher 1/2"	8
19-27		Bevel Washer for 1/2" bolt	4

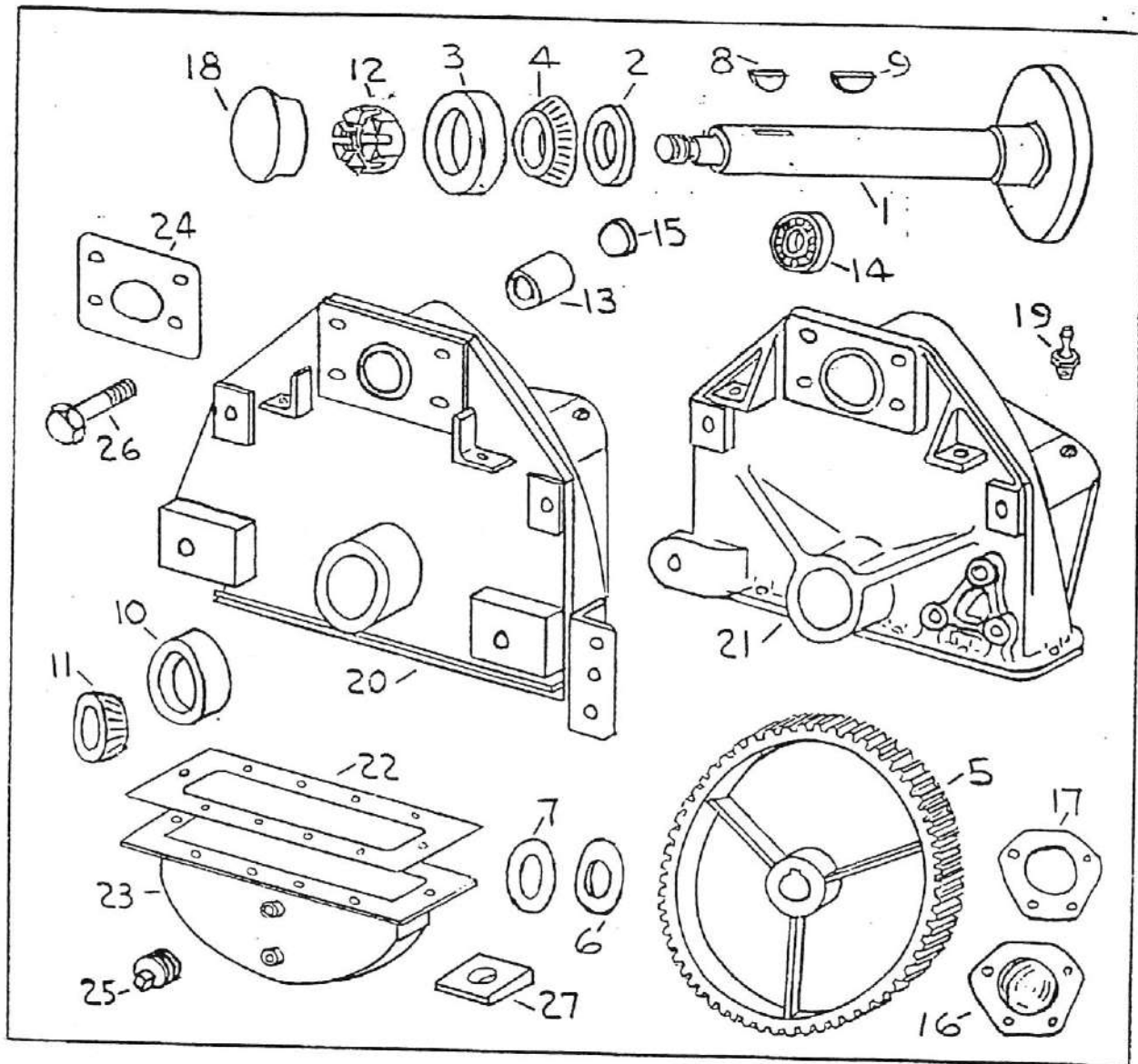


Fig. No. 19—Bull Gear Housing & Rear Axle

Ref. No.	Part No.	Page No.	Ref. No.	Part No.	Page No.	Ref. No.	Part No.	Page No.
1	B158-76	34	9		34	21	Z158-300-1	34
	C158-297	34	10	A158-445	34		Z158-300-2	34
2	A158-442	34	11	A158-447	34		D158-281-1	34
3	A158-444	34	12	A158-116	34		D158-281-2	34
4	A158-446	34	13	A158-80	34	22	A158-463	34
5	B158-23	34	14	A158-494	34		A158-258	34
	C158-296	34	15	A158-441	34	23	B158-58	34
	C158-295	34	16	A158-311	34		B158-251	34
	C158-296-1	34	17	A158-312	34	24	A158-65	34
	C158-296-2	34	18	A158-375	34	25		34
6	A158-105	34	19		34	26		34
7	A158-443	34	20	C158-75-1	34	27		34
8		34		C158-75-2	34			34

Figure and Reference No.	Part No.	DESCRIPTION	No. Pcs.
CLUTCH RELEASE FORK ASSEMBLY			
20-1	B158-91	Clutch Release Fork Assembly	1
20-2	A158-95	Fulcrum Pin	1
20-3		Cotter Pin 1/8" dia. x 3/4"	2
ENGINE HOOD			
21-1	C158-11	Engine Hood Ass'y. (Serial Nos. 101-500)	1
	C158-362	Engine Hood Ass'y. (Serial Nos. 501-700)	1
	C158-390	Engine Hood Assembly (Serial Nos. 701 up)	1
21-2		Rd. Hd. Mach. Screw 1/4"-20 N.C. x 3/8"	4
21-3		Rd. Hd. Mach. Screw 1/4"-20 N.C. x 1"	4
21-4		H.P. Hex. Nut Reg. 1/4"-20 N.C.	8
21-5		Lockwasher 1/4" dia.	8
21-6		Binding Tapa for Gas Tank Straps—1" Wide x 72" lg.—Press Belting	1
21-7		Mach. Bolt with Hex. Nut 1/4"-20 N.C. x 2 1/4"	2
		Lockwasher 1/4"	2
SAFETY FIRST			
HAPPY IS THE MAN WHO IS CAREFUL			

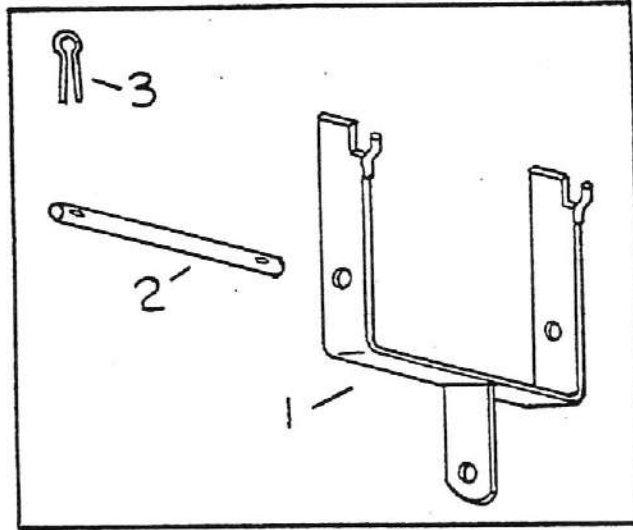


Fig. No. 20—Clutch Release Fork Assembly

Ref. No.	Part No.	Page No.
1	B158-91	36
2	A158-95	36
3		36

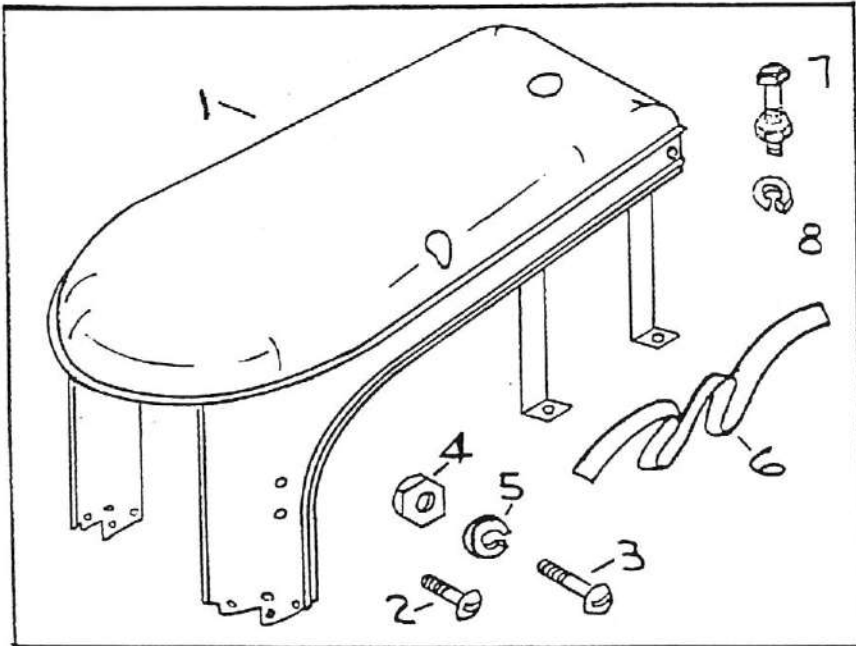


Fig. No. 21—Engine Hood

Ref. No.	Part No.	Page No.
1	C158-11	36
	C158-362	36
	C158-390	36
2		36
3		36
4		36
5		36
6		36
7		36
8		36

Figure and Reference No.	Part No.	DESCRIPTION	No. Pcs.
FUEL TANK AND ACCESSORIES			
22-1	C158-49	Fuel Tank Assembly (Serial Nos. 101-400)	1
22-2	C158-259	Fuel Tank Assembly (Serial Nos. 401 up)	1
22-3	C158-259-3	Fuel Tank Mtg. Pad ½ x 1 x 18" Felt	1
22-4		Binding Tape 1" x 20½" Press Belting	1
22-5	A158-486	Filler Cap—553469-2	1
22-6	A158-333	Fuel Line Assembly (Serial Nos. 101-400)	1
22-7	A158-313	Fuel Line Assembly (Serial Nos. 401-500)	1
	A158-315	Fuel Line Assembly (Serial Nos. 501-700)	1
	A158-413	Fuel Line Ass'y. Tank to Strainer (Serial Nos. 701 up)	1
	A158-409	Fuel Line Ass'y.—Strainer to Pump (Serial Nos. 701 up)	1
22-8	A158-333-1	Fuel Line Tubing only—¼" O.D. x 9¾" lg (Serial Nos. 101-400)	1
22-9	A158-313-1	Fuel Line Tubing only ¼" O.D. x 19" lg. (Serial Nos. 401-500)	1
	A158-315-1	Fuel Line Tubing only ¼" O.D. x 19" lg. (Serial Nos. 501-700)	1
	A158-413-1	Fuel Line Tubing only ¼" O.D. x 13" lg. (Serial Nos. 701 up)	1
	A158-409-1	Fuel Line Tubing only ¼" O.D. x 3" lg. (Serial Nos. 701 up)	1
22-10	A158-333-2	Tube Nut—1110 x 4 (Serial Nos. 101-400)	1
22-11	A158-333-4	Compression Nut—61x 4 (Serial Nos. 101-500)	1 or 2
22-12	A158-315-3	Replacement Nut—881-L-¼" (Serial Nos. 501 up)	2
22-13	A158-333-3	Compression Sleeve—60 x 4 (Serial Nos. 101-500)	1 or 2
22-14	A158-313-5	Compression Connector—¼" Tube to ⅛" I.P.T. (Serial Nos. 401-500)	2
22-15	A158-409-2	Half Union—888-L (Serial Nos. 501 up)	1 or 2
22-16	A158-409-3	Elbow—889-L (Serial Nos. 501 up)	1 or 2
22-17	C158-49-2	Shut-off Cock—555-J103-K (Serial Nos. 101-400)	1
22-18	A158-484	Shut-off Cock—215--J103-K (Serial Nos. 401-500)	1
	A158-501	Close Nipple ⅛" Pipe, Tank to Strainer	1
	A158-491	Fuel Strainer Mtg. Bracket (Serial Nos. 701 up)	1

SAFETY FIRST

DO NOT TAKE CHANCES



A CAREFUL OPERATOR IS THE BEST
INSURANCE AGAINST AN ACCIDENT

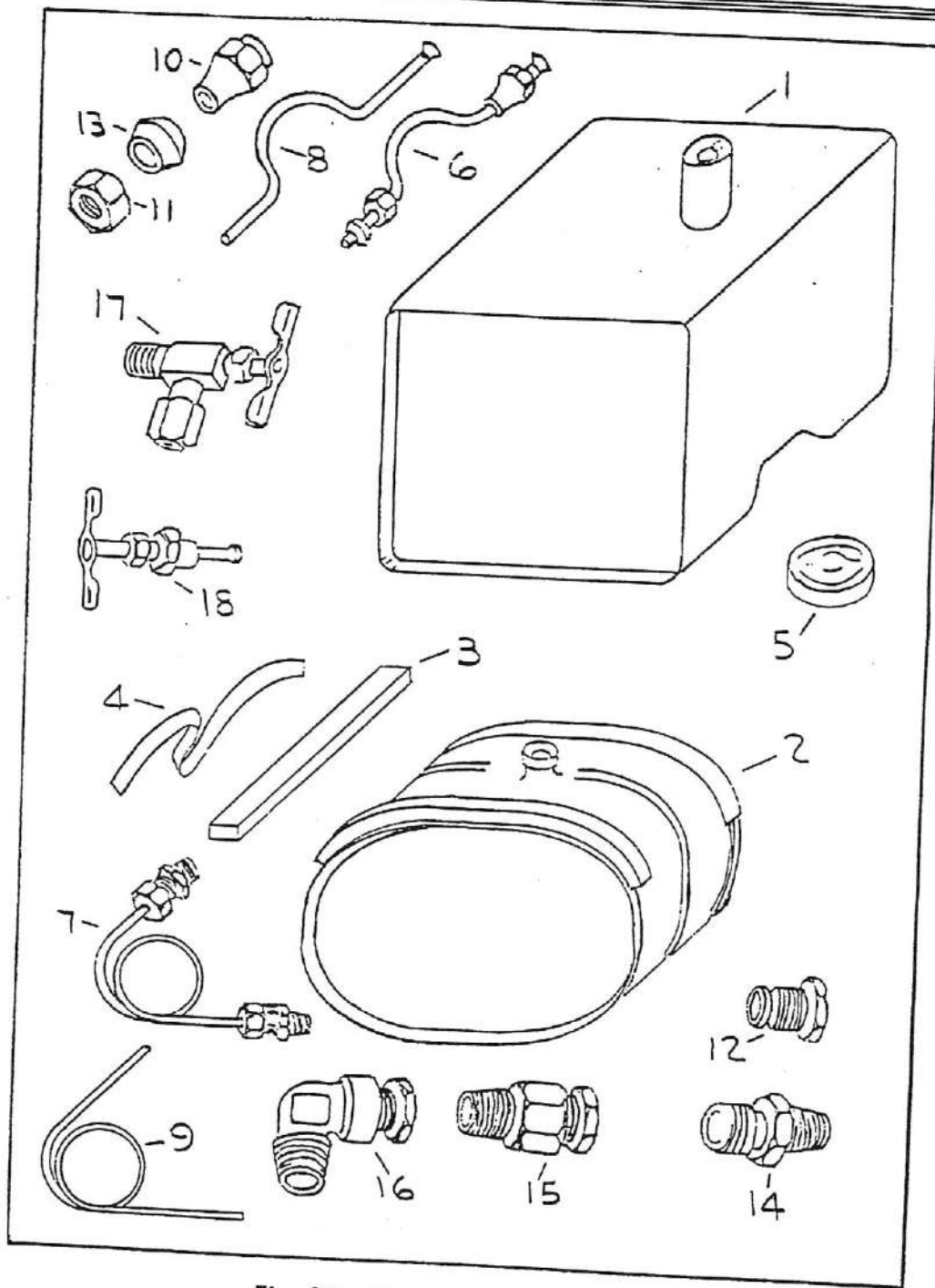


Fig. 22—Gas Tank & Accessories

Ref. No.	Part No.	Page No.	Ref. No.	Part No.	Page No.	Ref. No.	Part No.	Page No.
1	C158-49	38		A158-409	38	13	A158-333-3	38
2	C158-259	38	8	A158-333-1	38	14	A158-313-5	38
3	C158-259-3	38	9	A158-313-1	38	15	A158-409-2	38
4		38		A158-315-1	38	16	A158-409-3	38
5	A158-486	38		A158-413-1	38	17	C158-49-2	38
6	A158-333	38	10	A158-409-1	38	18	A158-484	38
7	A158-313	38	11	A158-333-2	38		A158-501	38
	A158-315	38	12	A158-333-4	38		A158-491	38
	A158-413	38		A158-315-3	38			

Figure and Reference No.	Part No.	DESCRIPTION	No. Pcs.
FENDER R.H. AND L.H.			
23-1	B158-248-1	Fender Left Hand (Serial Nos. 101-500)	1
	B158-345-1	Fender—Left Hand (Serial Nos. 501 up)	1
23-2	B158-248-2	Fender Right Hand (Serial Nos. 101-500)	1
	B158-345-2	Fender—Right Hand (Serial Nos. 501 up)	1
23-3	A158-134	Fender Spacer (Serial Nos. 101-500)	2
	A158-339	Fender Spacer (Serial Nos. 501 up)	2
23-4		Mach. Bolt with Hex. Nut $\frac{1}{2}$ "-13 N.C. x 2"	2
23-5		Lockwasher $\frac{1}{2}$ "	2
23-6		Plain Washer $\frac{1}{2}$ "	2
RIDING SEAT			
24-1	A158-455	Riding Seat SS-701	1
24-2	B158-4	Seat Spring (Serial Nos. 101-500)	1
	B158-292	Seat Spring (Serial Nos. 501-700)	1
	B158-382	Seat Spring (Serial Nos. 701 up)	1
24-3		Short Neck Carriage Bolt $\frac{5}{8}$ "-11 N.C. x $1\frac{1}{2}$ "	1
24-4		Plain Washer $\frac{7}{8}$ "	1
24-5	A158-106	Seat Assembly Anchor Bolt (Serial Nos. 101-500)	1
		Seat Spring Stud $\frac{5}{8}$ "-11 N.C. x $2\frac{1}{4}$ " (Serial Nos. 501 up)	1
24-6		Nut— $\frac{5}{8}$ "-11 N.C.	2
24-7		Lockwasher $\frac{5}{8}$ "	2
24-8		Cotter Pin $\frac{1}{8}$ " dia. x $1\frac{1}{4}$ "	1
24-9	A158-207	Locating Pin	1
24-10		Stl. Jack Chain No. 13 Single x $6\frac{1}{2}$ " lg.	1
24-11		Cotter Pin $\frac{1}{8}$ " dia. x 1"	2
24-12	A158-369	Seat Positioner Plate (Serial Nos. 501 up)	1
		Cap Screw—Flat Head $\frac{5}{8}$ "-11 N.C. x 1" (Serial Nos. 501 up)	1
SAFETY FIRST			
REMEMBER A CAREFUL OPERATOR ALWAYS IS THE BEST INSURANCE AGAINST AN ACCIDENT			

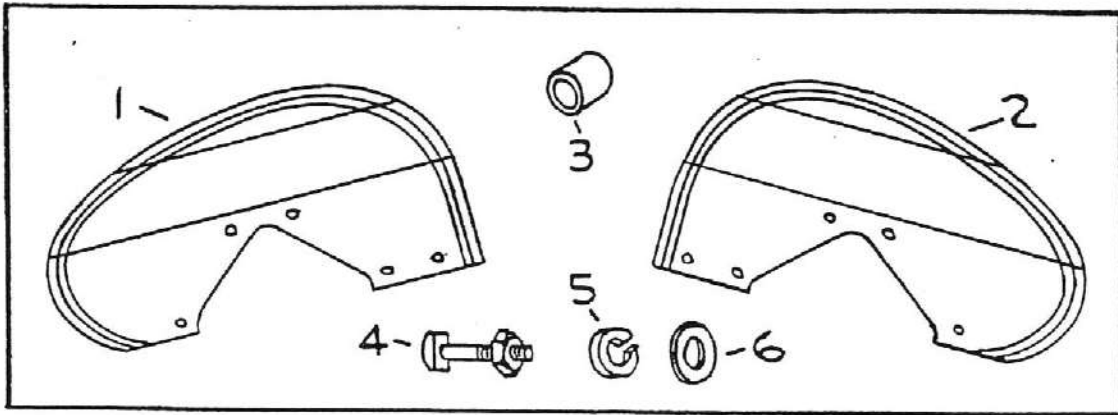


Fig. No. 23—Fenders

Ref. No.	Part No.	Page No.
1	B158-248-1 B158-345-1	40
2	B158-248-2 B158-345-2	40
3	A158-134 A158-339	40
4		40
5		40
6		40

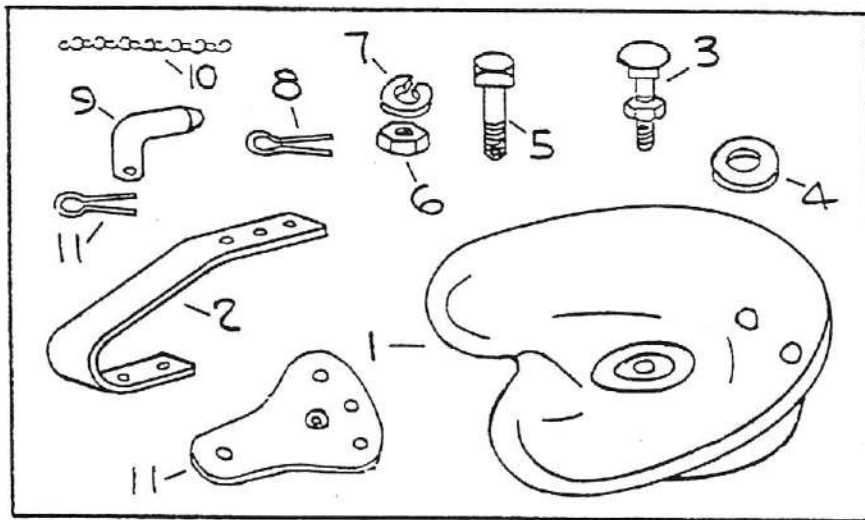


Fig. No. 24—Riding Seat

Ref. No.	Part No.	Page No.
1	A158-455	40
2	B158-4 B158-292 B158-382	40
3		40
4		40
5	B158-106	40
6		40
7		40
8		40
9	A158-207	40
10		40
11		40
12	A158-369	40

Figure and Reference No.	Part No.	DESCRIPTION	No. Pcs.
GRILL ASSEMBLY			
25-1	A158-167	Grill Assembly (Used on Serial Nos. up to 500)	1
	C158-341	Grill Assembly (Used on Serial Nos. 501-700)	1
25-2	C158-393	Grill Assembly (Used on Serial Nos. 701 up)	1
25-3		Thumb Screw 1/4"-20 N.C. x 1/2"	1
		Std. Plain Washer for 1/4" dia. bolt	1
MUFFLER ASSEMBLY			
26-1	B158-156	Muffler Ass'y. (Used on Serial Nos. up to 700)	1
	B158-398	Muffler Ass'y. (Used on Serial Nos. 701 up)	1
CAUTION			
<p>We caution you against the purchase of replacement parts not made by The Waterloo Manufacturing Co. Ltd. The parts entering into the construction of W.M. Co. products are made from high grade materials, a great many of which are of special S.A.E. specifications to meet the most rigorous requirements. Both the raw materials and the parts during the various processes of manufacture are subjected to frequent and rigid inspections to guard against any possibility of defect in material or workmanship. There are on the market many parts identical in appearance with the genuine W.M. Co. parts but which are made of inferior materials and will not give satisfaction. Insist on getting genuine W.M. Co. parts.</p> <p style="text-align: center;">Signed THE WATERLOO MANUFACTURING CO. LTD.</p>			

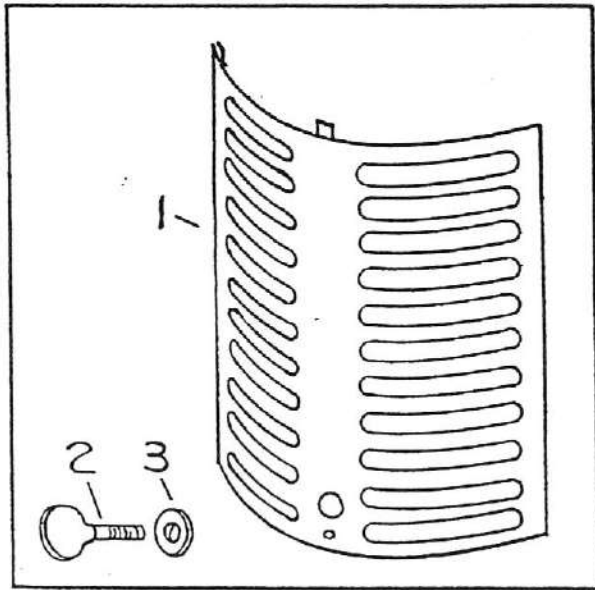


Fig. No. 25—Grill

Ref. No.	Part No.	Page No.
1	A158-167	42
	C158-341	42
	C158-393	42
2		42
3		42

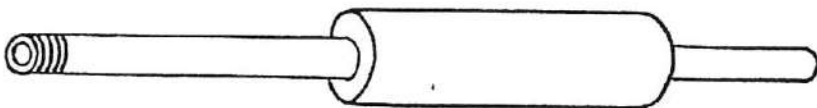


Fig. No. 26—Muffler

Ref. No.	Part No.	Page No.
1	B158-156	42
	B158-398	42

Figure and Reference No.	Part No.	DESCRIPTION	No. Pcs.
		REAR WHEEL	
	A158-371	Rear Wheel Tractor Tire—2 ply—7.00 x 24	2
	A158-372	Rear Wheel Tractor Tire—2 ply—8.00 x 24	2
	A158-373	Tractor Implement Tube for 7.00 x 24 Tire with TR-217 Valve for Calcium Filling	2
	A158-374	Tractor Implement Tube for 7.00 x 24 Tire with TR-217 Valve for Calcium Filling	2
27-1	B158-37	Rear Wheel Rim Assembly 6-24 for 7.00 x 24 Tire	2
27-2	B158-411	Rear Wheel Rim Assembly 7-24 for 8.00 x 24 Tire	2
27-3	A158-370	Wheel Disc No. 5551	2
27-4	B158-255	Wheel Weight—App. 150 Lbs. each	2 or 4
27-5		Rear Wheel Hub Bolts ½"-20 T.P.I. x 1½"	10
27-6		Mach. Bolt with Hex. Nut ½"-13 N.C. x 2½"	8
27-7		Lockwasher ½"	8
27-8		Carriage Bolt—When using 1 Wt. (per wheel) ½"-13 N.C. x 3"	4
27-9		Carriage Bolt—When using 2 Wt. (per wheel) ½"-13 N.C. x 6"	4
27-10		Hex. Nut ½"-13 N.C. (per wheel)	4
27-11		Spring ½" (per wheel)	4

SAFETY FIRST

REMEMBER A CAREFUL OPERATOR ALWAYS
IS THE BEST INSURANCE AGAINST
AN ACCIDENT

*

DO NOT TAKE CHANCES

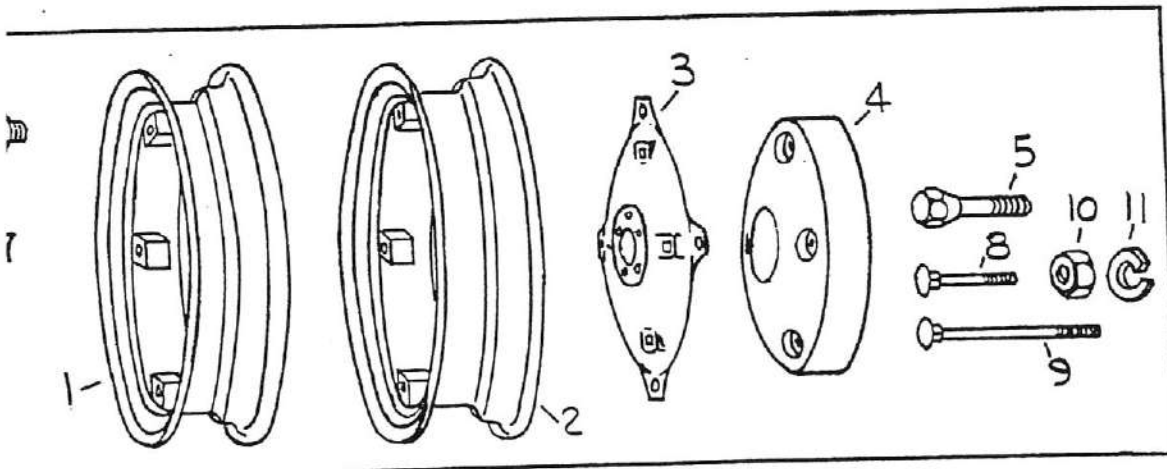


Fig. No. 27—Rear Wheel

Ref. No.	Part No.	Page No.
1	B158-37	44
2	B158-411	44
3	A158-370	44
4	B158-255	44
5		44
6		44
5		44
9		44
7		44
10		44
11		44

Figure and Reference No.	Part No.	DESCRIPTION	No. Pcs.
DRAW BAR			
28-1	B158-231	Draw Bar Frame Assembly	1
28-2	B158-227	Draw Bar "V" Assembly	1
28-3	B158-232	Draw Bar Arm Assembly	1
28-4	A158-234	Draw Bar Adjusting Rivet	2
28-5		Cotter Pin 1/8" dia. x 1 1/2"	4
28-6	A158-233	Machine Bolt 5/8"-11 N.C. x 3"	2
28-7	C158-226-4	Hex. S.F. Slotted Nut 5/8"-11 N.C.	2
28-8	C158-226-1	Machine Bolt and Nut 5/8"-11 N.C. x 1 1/4" on Serial No. 101 to 300-351 to 375 and 497	2
28-9		Hex. Hd. Cap Screw 5/8"-11 N.C. x 1 1/4" on Serial No. 301 to 350—376 to 496—498 to 500	2
28-10		Std. Spring Lockwasher for 5/8" dia. bolt	2

THE WATERLOO MANUFACTURING COMPANY RESERVES THE RIGHT TO IMPROVE ITS PRODUCTS BY CHANGES IN MATERIALS OR DESIGN. RECORDS OF THESE CHANGES ARE KEPT BY SERIAL NUMBER BREAKING POINTS. IN ORDER THAT CORRECT REPLACEMENT PARTS MAY BE FURNISHED IT IS THEREFORE **ESSENTIAL** THAT SERIAL NUMBER BE QUOTED WHEN ORDERING PARTS.

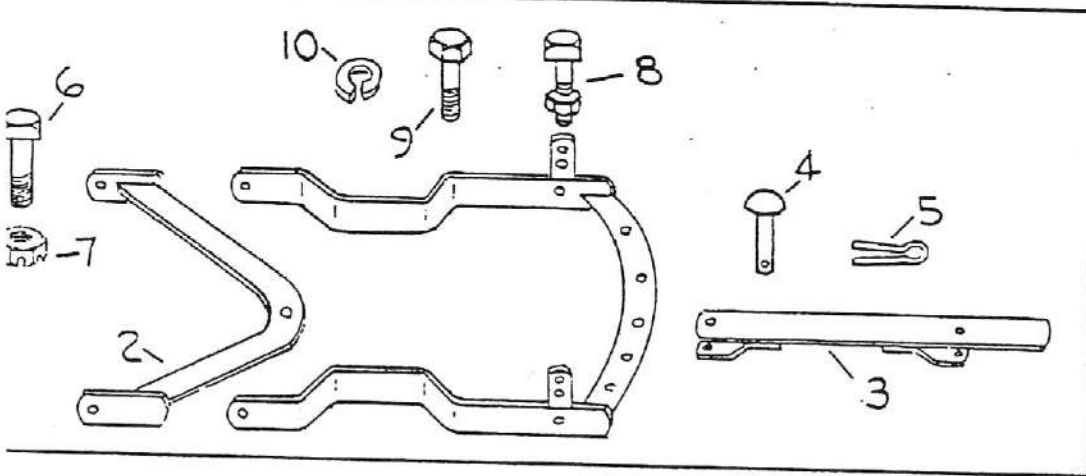


Fig. No. 28—Draw Bar

Ref. No.	Part No.	Page No.
1	B158-231	46
2	B158-227	46
3	B158-232	46
4	A158-234	46
5		46
6	A158-233	46
7	C158-226-4	46
8	C158-226-1	46
9		46
10		46

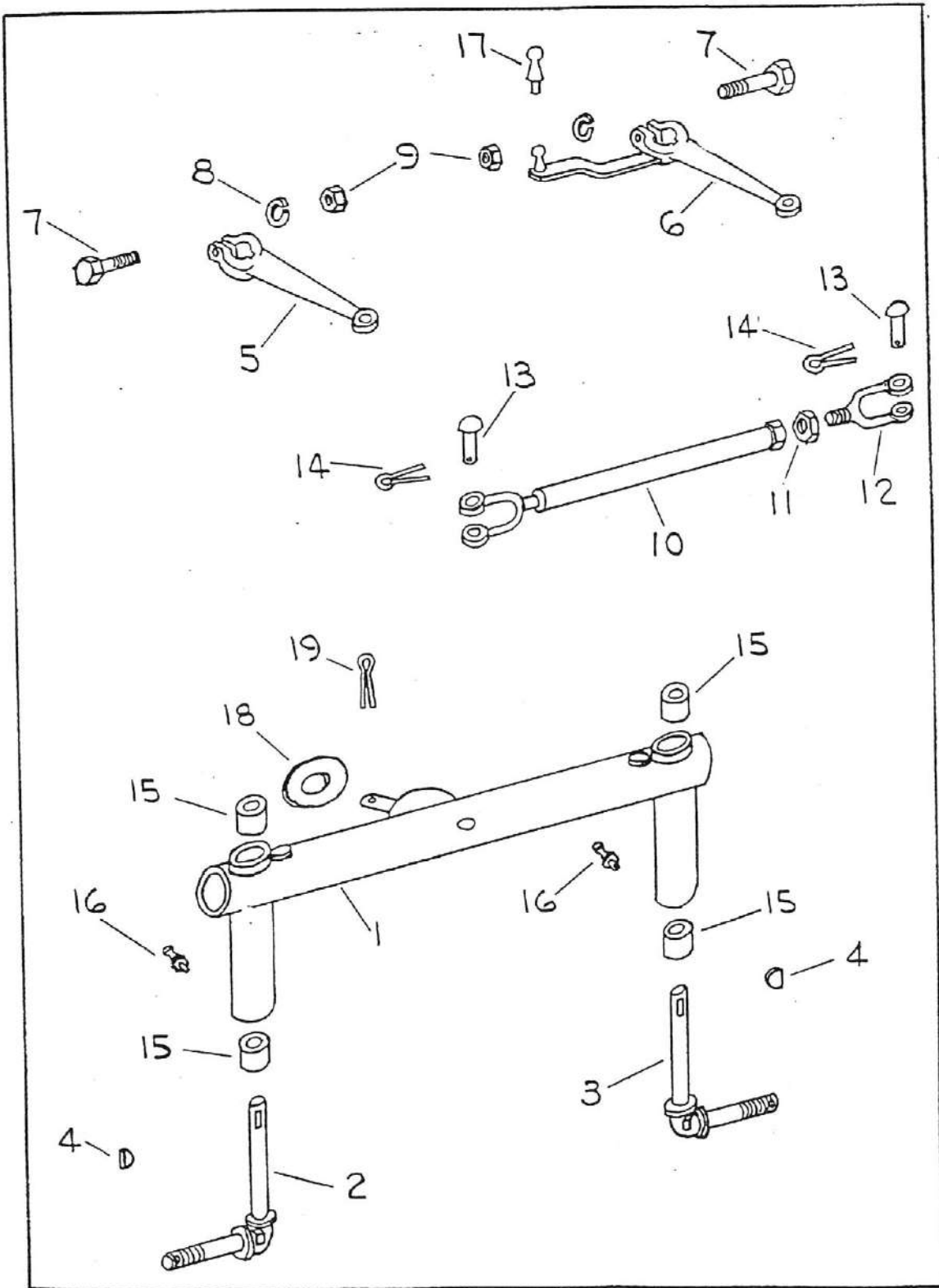


Fig. 2—Fixed Front Axle & Tie Rod Assembly

Figure and Reference No.	Part No.	DESCRIPTION	No. Pcs.
ADJUSTABLE FRONT AXLE AND TIE ROD ASSEMBLY			
3-1	B158-44	Main Axle and King Pin Ass'y.	1
3-2	B158-16	Axle Spindle Housing Ass'y. R.H.	1
3-3	B158-17	Axle Spindle Housing Ass'y. L.H.	1
3-4	A158-60	Axle Setting Pin	1
3-5		Cotter Pin 1/8" dia. x 3/4"	1
3-6	A158-10	Front Axle Adjusting Clamp	2
3-7		Cap Screw 1/2"—20 N.F. x 3"	2
3-8		Lockwasher 1/2"	4
3-9		Hex. S.F. Nut 1/2"—20 N.F.	4
2-2	B158-31	Front Wheel Spindle Ass'y. R.H.	4
2-3	B158-32	Front Wheel Spindle Ass'y. L.H.	4
2-4		Woodruff Key No. 807	1
2-5	A158-19	Spindle Arm Ass'y. R.H.	1
2-6	B158-25	Spindle Arm & Ball Ass'y. L.H.	2
2-7		Cap Screw 3/8"—24 N.F. x 2"	1
2-8		Lockwasher 3/8"	1
2-9		Hex. S.F. Nut 3/8"—24 N.F.	2
3-10		Grease Fitting No. 1608 5/16" D.T.	2
3-11	B158-16-17-4	Bearing No. E-598 1 3/8" O.D. x 1" I.D. x 1 1/2" lg.	2
2-17	A158-26	Ball—(Spindle Arm Extension)	2
3-12	B158-44-2	King Pin Washer Std. Plt. Washer for 1 1/4" dia. blot	4
3-13		King Pin Cotter 5/16" dia. x 2"	1
3-14	B158-51	Tie Rod Sleeve Assembly	1
3-15		Jam Nut 5/8"—18 N.F.	1
2-12	A158-55	Adjustable Yoke End	1
3-16	B158-56	Positioning Yoke End	1
3-17	B158-50-5	Tie Rod Sleeve Clamp	1
3-18		Machine Bolt & Hex. Nut 3/8"—16 N.C. x 1 1/2"	1
3-19		Lockwasher 3/8"	1
2-13	A158-59	Tie Rod Connecting Pin	1
2-14		Cotter Pin 1/8" dia. x 1"	1
			2
			2

SAFETY FIRST

NEVER ATTEMPT TO CLEAN, OIL OR ADJUST
A MACHINE WHILE IN MOTION
A CAREFUL OPERATOR IS THE BEST
INSURANCE AGAINST AN ACCIDENT

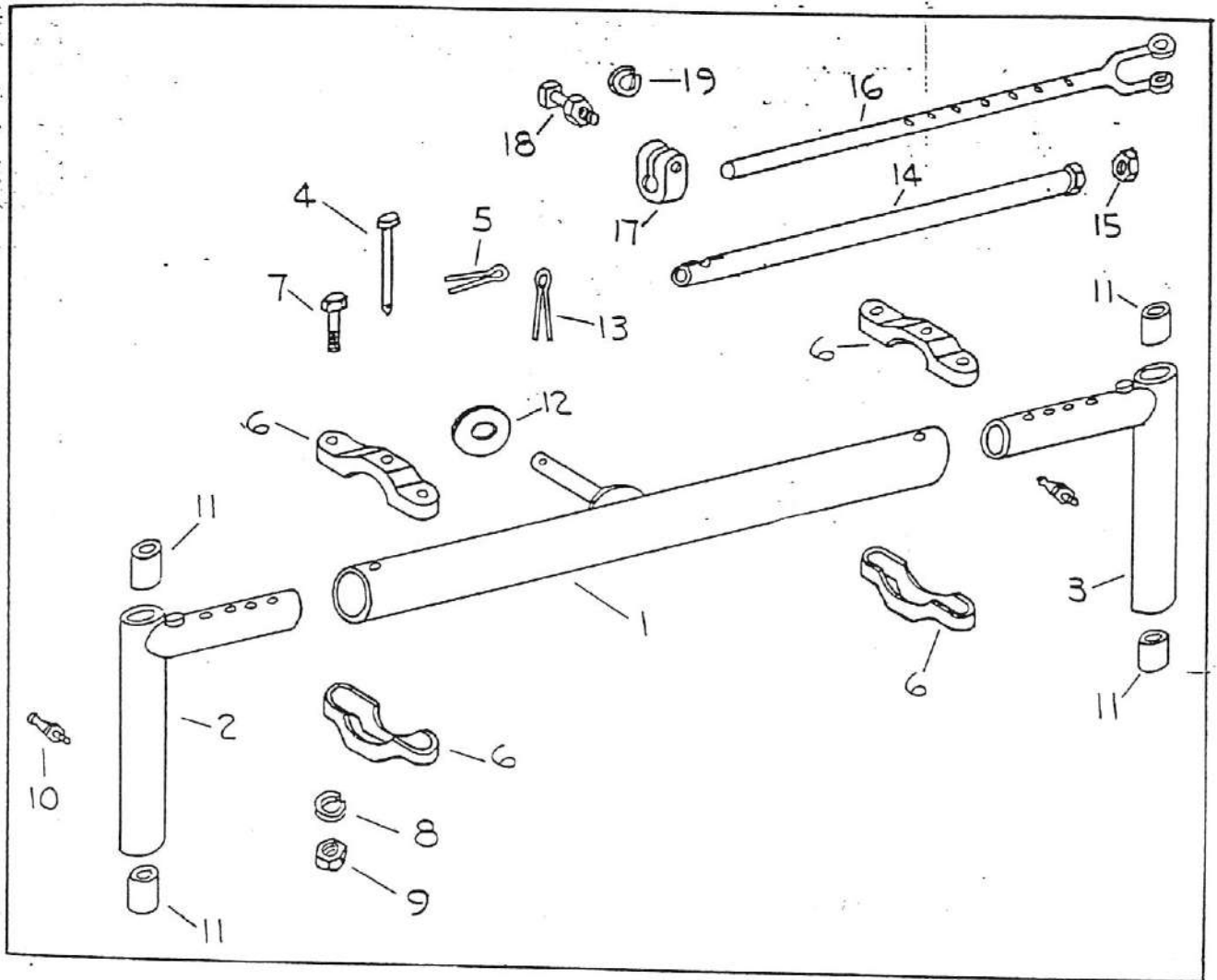


Fig. No. 3—Adjustable Front Axle & Tie Rod Assembly

Ref. No.	Part No.	Page No.	Ref. No.	Part No.	Page No.
1	B158-44	4	11	B158-16-17-4	4
2	B158-16	4	12	B158-44-2	4
3	B158-17	4	13		4
4	A158-60	4	14	B158-51	4
5		4	15		4
6	A158-10	4	16	A158-56	4
7		4	17	B-158-50-5	4
8		4	18		4
9		4	19		4
10		4			

Figure and Reference No.	Part No.	DESCRIPTION	No. Pcs.
REAR END DIFFERENTIAL			
4-1	B158-379	Differential Gear Shaft on Serial No. 101 to 300	2
	B158-135	Differential Gear Shaft on Serial No. 301 to 500	1
4-2	A158-459	Set Diff. Ring Gear & Pinion—WX1090A-WX1091A	2
4-3	A158-469	Bearing Cone—28156	1
4-4	A158-468	Bearing Cup—28300	2
4-5	A158-460	Differential Case Set Complete W1181	2
		Flanged Sides (2 parts—1 part shown) W1182—Plain Side	1
4-6	A158-461	Differential Spider W1181-3	1
4-7	A158-462	Differential Spider Pinion W1181-5	1
4-8	A158-173	Cap Screw $\frac{3}{8}$ "—24 N.F. x $3\frac{1}{4}$ "	3
		Hex. S.F. Slotted Nut $\frac{3}{8}$ "—24 N.F.	9
		Wire-Soft Annealed No. 16 Ga. x 24" lg.	9
4-9	A158-22	Bull Pinion	1
4-10	A158-225	Key for Bull Pinion $\frac{3}{16}$ " sq.— $2\frac{1}{4}$ " lg.	2
4-11	B158-98	Banjo Housing	2
4-12	A158-33-1	Differential Shim-Plastic—10" O.D. x $8-15/32$ " I.D. x .010 Th.	1
	A158-33-2	Differential Shim-Plastic—10" O.D. x $8-15/32$ " I.D. x .0075 Th.	2
	A158-33-3	Differential Shim-Plastic—10" O.D. x $8-15/32$ " I. D. x .005 Th.	2
		Hex. Hd. Cap Screw $\frac{3}{8}$ "—24 N.F. x $1\frac{1}{2}$ "	2
4-13	B158-138	Lockwasher $\frac{3}{8}$ "	20
	B158-137	Differential Axle Housing R.H.	20
4-14	A158-170	Differential Axle Housing L.H. with Clip	1
4-15	A158-192	Brake Band Lever Assembly	1
		Brake Band Pin	2
		Cap Screw $\frac{3}{8}$ "—16 N.C. x 1"	2
4-16	A158-178	Lockwasher $\frac{3}{8}$ "	4
4-17	A158-165	Brake Drum Assembly	4
		Brake Band Lever Bearing	2
		Cotter Pin $3/32$ " dia. x $3/4$ "	2
		Cotter Pin $3/32$ " dia. x 1"	4
4-18	A158-332	Brake Drum Key $1/4$ " sq. x $1\frac{3}{4}$ "	4
4-19	A158-467	Sq. Hd. Set Screw $3/8$ "—16 N.C. x $1/2$ "	2
4-20	B153-184	Oil Seal "P"—18714 For Diff. Gear Shaft	2
		Brake Band Assembly	4
4-21	B158-184-1	Hex. S.F. Jam Nuts $1/2$ "—13 N.C.	2
	B158-184-2	Brake Lining	4
4-22	A158-166	Brake Band Lining Rivets No. B-4-5x $5/16$ " x $9/64$ " dia. $5/16$ " O.D. Hd.	2
		Cover Differential Axle Housing	14
		Cap Screw $1/4$ "—20 N.C. x $1/2$ "	2
		Lockwasher $1/4$ "	8
4-23	B158-21	Pipe Plug $3/8$ " N.P.T. (For Banjo Hsg.)	8
	A158-465	Drive Shaft	2
	A158-466	Locknut for Diff. Ring Gear and Pinion TO-4634	1
4-24	A158-470	Lockwasher for Diff. Ring Gear and Pinion TO-4636	2
4-25	A158-471	Double Bearing Cup-28314D—For Diff. Pinion	1
4-26	A153-271	Bearing Cone—28156 for Diff. Pinion	1
		Key for Pinion (Drive Shaft)	2
		Light Slotted Hex. S.F. Nut $5/8$ "—11 N.F.	1
4-27	A158-464	Cotter Pin $1/8$ " dia. x $1\frac{1}{2}$ "	1
		Bushing $1\frac{1}{4}$ " I.D. x $1\frac{1}{2}$ " O.D. x 1"	1
			2

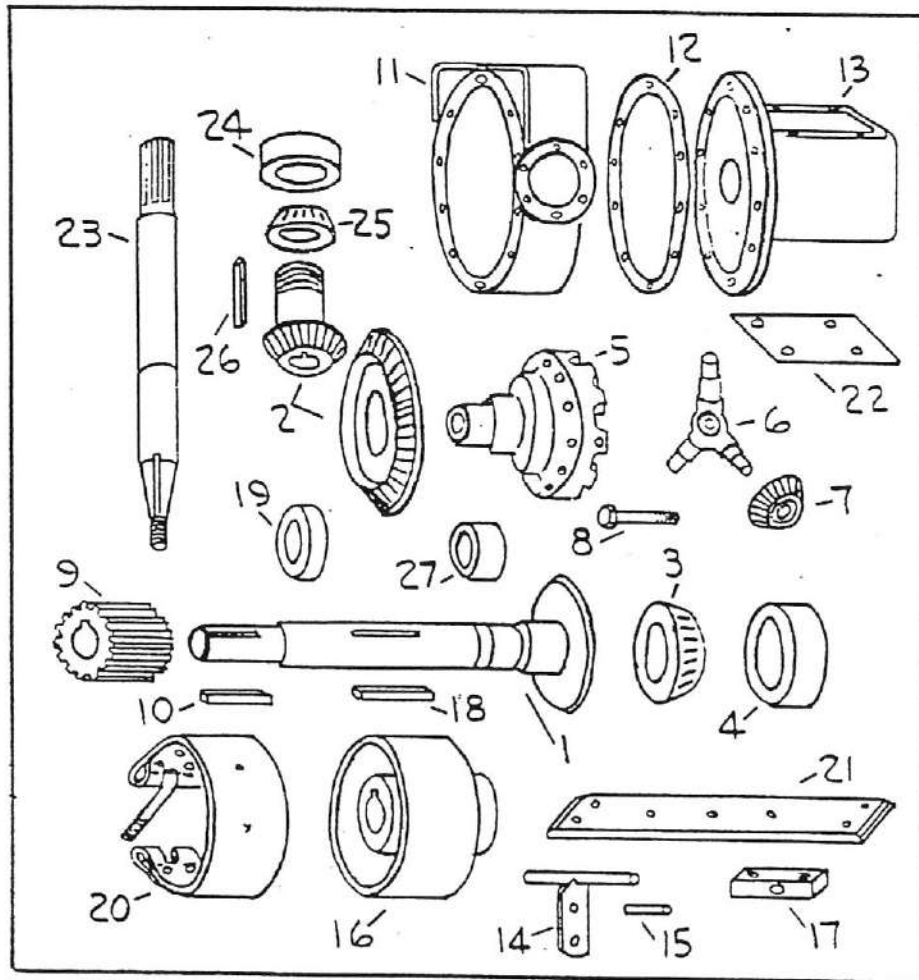


Fig. No.4—Rear End Differential

Used on Tractors up to Serial No. 500 Only
 For Tractors Serial No. 501 up — See Transmission & Differential Page 9

Ref. No.	Part No.	Page No.	Ref. No.	Part No.	Page No.	Ref. No.	Part No.	Page No.
1	B158-379	6	11	B158-98	6	19	A158-467	6
	B158-135	6	12	A158-33-1	6	20	B158-184	6
2	A158-459	6		A158-33-2	6	21	B158-184-1	6
3	A158-469	6		A158-33-3	6	22	A158-166	6
4	A158-468	6	13	B158-138	6	23	B158-21	6
5	A158-460	6		B158-137	6	24	A158-470	6
6	A158-461	6	14	A158-170	6	25	A158-471	6
7	A158-462	6	15	A158-192	6	26	A158-271	6
8	A158-173	6	16	A158-178	6	27	A158-464	6
9	A158-22	6	17	A158-165	6			
10	A158-225	6	18	A158-332	6			

Figure and Reference No.	Part No.	DESCRIPTION	No. Pcs.
DRIVE & DIFFERENTIAL SHAFTS & HOUSINGS & BRAKE			
5-1	A158-298	Bull Pinion—Serial No. 501 Up	2
5-2	B158-303	Drive Shaft Housing-on serial No. 501 to 700	1
		Studs— $\frac{3}{8}$ "—11 N.C. x $2\frac{1}{4}$ "	8
		Hex. Nut $\frac{5}{8}$ "—11 N.C.	8
5-3	D158-310-1	Differential Axle Housing L.H.	1
	D158-310-2	Differential Axle Housing R.H.	1
5-4	A158-316	Differential Axle Housing Cover	2
5-5	B158-299	Differential Gear Shaft	2
5-6	B158-496	Drive Shaft & Coupling Ass'y.	1
	A158-358	Drive Shaft Coupling Pin	1
5-7	A158-498	Snap Ring—No. 5100-98	2
5-8	A158-318	Key for Bull Pinion $\frac{1}{4}$ " sq. x $1\frac{7}{8}$ "	2
5-9	A158-497	Super Oil Seal No. 18616 Type "p"	2
5-10	A158-350	Brake Lever	4
5-11	A158-351	Brake Eye Bolt	2
5-12	B158-309	Brake Drum	2
5-13		Woodruff Key—810	2
		Sq. Hd. Set Screw C.P.— $\frac{3}{8}$ "-16 N.C. x 1"	2
		Jam Nut— $\frac{3}{8}$ "—16 N.C.	2
5-14	B158-346	Brake Band and Lining Ass'y.	2
5-15	B158-349	Brake Band Lining	2
	B158-346-3	Brake Band Rivet—Brass—B-4-7-9/64" dia. x 7/16" lg. x 5/16" O.D. Hd.	8
5-16		Elastic Stop Nut—29E-070-7/16-20 N.F. Plain	2
		Clevis Pin—C.P.—236	6
		Cotter Pin— $\frac{3}{32}$ " dia. x $\frac{3}{4}$ "	6
5-17	A158-352	Brake Band Compression Spring	2
		Washer—7/16"	2
5-18	A158-353	Ferrules	1
5-19	B158-412	Drive Shaft Housing On Serial No. 701 up	8
		Stud $\frac{5}{8}$ "-11 N.C. x $2\frac{1}{4}$ " Differential Axle Hsg. to Trans.	8
		Lockwasher $\frac{5}{8}$ " Differential Axle Hsg. to Trans.	8
		Hex. Nut $\frac{5}{8}$ "-11 N.C. Differential Axle Hsg. to Trans.	4
		Stud $\frac{1}{2}$ "-13 N.C. x 2" Drive Shaft Hsg. to Trans.	4
		Lockwasher $\frac{1}{2}$ " Drive Shaft Hsg. to Trans.	4
		Hex. Nut $\frac{1}{2}$ "-13 N.C. Drive Shaft Hsg. to Trans.	4
		Cap Screw 7/16"-14 N.C. x $1\frac{3}{4}$ " Drive Shaft Hsg. to Clutch Hsg.	4
		Cap Screw 5/16"-18 N.C. x $\frac{3}{4}$ " Differential Hsg. Cover	4
		Lockwasher 5/16" Differential Hsg. Cover	4
		Plain Washer 5/16"-18 N.C. Differential Hsg. Cover	4

SAFETY FIRST

YOUR SAFETY DEPENDS ON HOW CAREFUL
YOU ARE, NOT HOW LUCKY

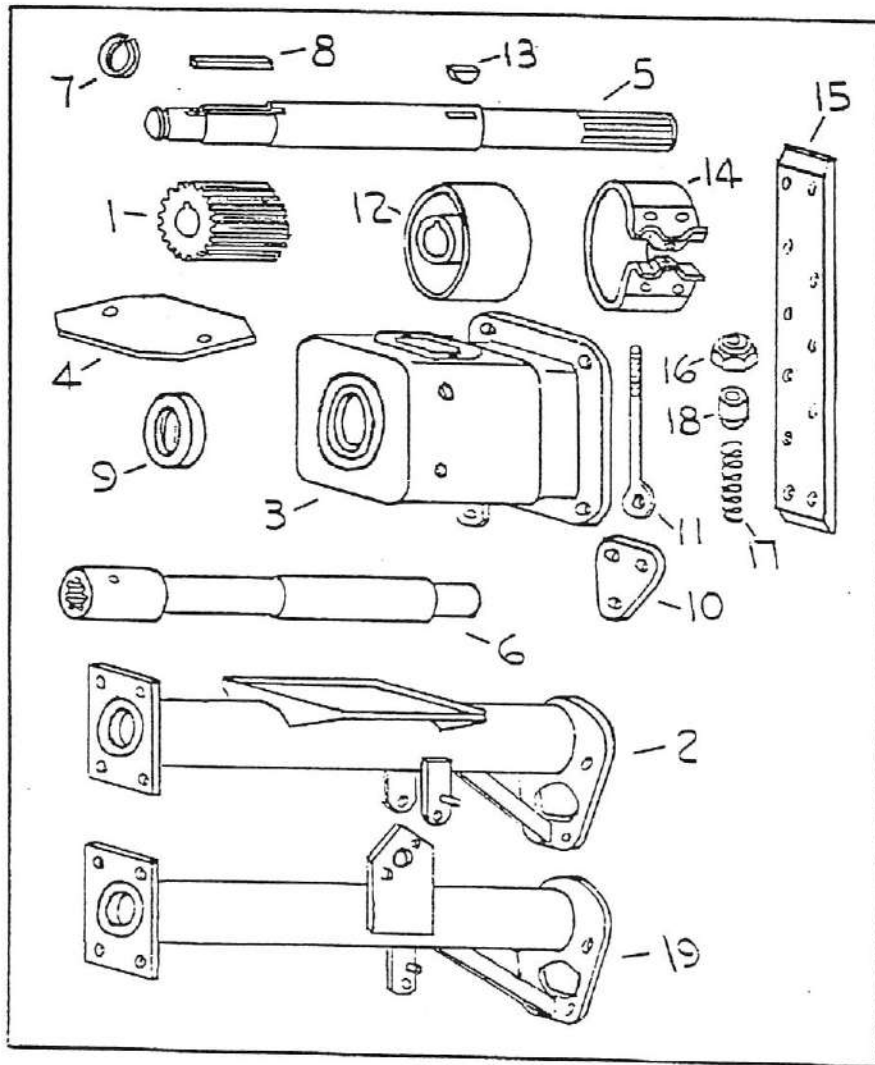


Fig. 5 Drive & Differential Shafts, Housings & Brake

Used on Tractors Serial Nos. 501 up only
For Tractors Serial Nos. below 501 see Page 7

Ref. No.	Part No.	Page No.	Ref. No.	Part No.	Page No.
1	A158-298	8	10	A158-350	8
2	B158-303	8	11	A158-351	8
3	D158-310-1	8	12	B158-309	8
	D158-310-2	8	13		8
4	A158-316	8	14	B158-346	8
5	B158-299	8	15	B158-349	8
6	B158-496	8	16		8
7	A158-498	8	17	A158-352	8
8	A158-318	8	18	A158-353	8
9	A158-497	8	19	B158-412	8

Figure and Reference No.	Part No.	DESCRIPTION	No. Pcs.
		TRANSMISSION	
	T96-1E	Transmission Case	
	X1519	1/2" Pipe Plug on Transmission Case	1
6-1	AT96-2	Mainshaft Assembly	2
	T96-2	Mainshaft	1
	AT96-2 1/2	Synchronizer Unit Assembly	1
6-2	T96-2 1/2	Intermediate & High Clutch Hub	1
6-3	T96-15	Second & Direct Clutch Sleeve	1
6-4	T96-13	Shifting Plate	1
6-5	4682K	Synchronizer Spring	3
	AT96-11	Mainshaft Second Speed Gear & Bushing Ass'y.	2
6-6	T96-11	Mainshaft Second Speed Gear 24T	1
6-7	T96-19	Second Speed Gear Bushing	1
6-8	T84F-14	Synchronizer Blocking Ring	1
6-9	4686	Clutch Hub Snap Ring	2
6-10	T96-12	Mainshaft Low and Reverse Gear 24T	1
6-11	X3203G	Annular Bearing No. 1206	1
6-12	T84-7 1/2	Mainshaft Bearing Snap Ring	1
	T84-7 1/2 A	Bearing Snap Ring (Use as req.)	1
6-13	T96-145 1/2	Rear Bearing Retainer Gasket (Use as req.)	1
	X702	Cap Screw 7/16"-14 N.C. x 7/8"	1
	X2979S	Lockwasher—7/16"	1
6-14	T96-8	Countershaft Gears	4
6-15	T96-28	Countershaft Bearing Spacer	4
6-16	T96-29	Countershaft Bearing Spacer	1
6-17	T96-30	Countershaft Thrust Washer, Front	1
6-18	T96-32	Countershaft Thrust Washer, Rear	2
6-19	T86-166	Bearing Rollers	1
6-20	T96-33	Countershaft Thrust Washer, Rear	1
6-21	T96-3	Countershaft	40
6-22	T96-35	Reverse Idler Shaft	1
6-23	T84G-48	Idler & Countershaft Lock Plate	1
	AT96-10	Reverse Idler Gear Assembly	1
6-24	T96-10	Reverse Idler Gear	1
6-25	T96-85	Reverse Idler Gear Bushing	1
6-26	T84G-6E	Main Drive Gear Bearing Retainer	1
6-27	T84-145A	Main Drive Gear Bearing Retainer Gasket	1
	20366-S	Cap Screw 5/16"-18 N.C. x 7/8"	1
	X2977D	Lockwasher 5/16"	1
	AT96-16A	Main Drive Gear Ass'y.	3
6-28	T96-16A	Main Drive Gear	3
6-29	X3204G	Annular Bearing No. 43207	1
6-30	B7070	M.D. Gear Bearing Snap Ring	1
	T84G-6 1/2	M.D. Gear Bearing Snap Ring	1
6-31	T84-17	M.D. Gear Snap Ring (Use as req.)	1
	T84-17A	M.D. Gear Snap Ring (Use as req.)	1
	T84-17B	M.D. Gear Snap Ring (Use as req.)	1
6-32	T90A-136	M.D. Gear Oil Baffle (Use as req.)	1
6-33	T84G-26	M.D. Gear Oil Baffle (Use as req.)	1
6-34	T96-148E	Mainshaft Pilot Bearing Roller	1
6-35	4023B	Control Housing	13
6-36	4572F	Control Bracket Pin	1
6-37	T96-20E	Shift Rail Cap	1
6-38	T96-21E	High and Inter. Shift Rail	1
6-39	T96-23E	Low and Reverse Shift Rail	2
6-40	T96-24E	High and Inter. Shift Fork	1
6-41	4583	Low and Reverse Shift Fork	1
6-42	T88-42	Gear Shift Fork Pin	1
6-43	T90-86	Poppet Spring	1
6-44	418-7A	Interlock Plunger	2
		Control Lever Support Spring	2
		Continued on Page 11A	1

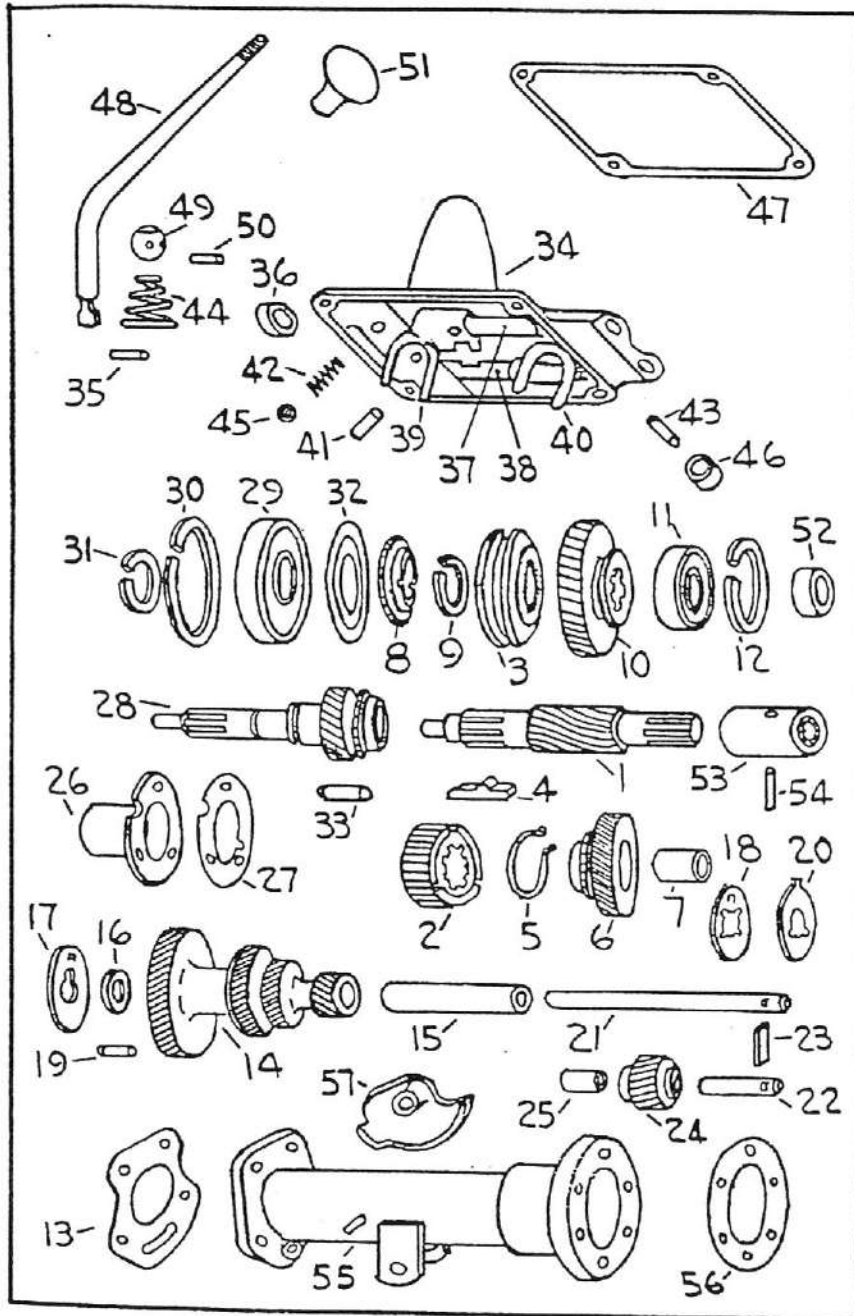


Fig. No. 6—Transmission (Borg Warner No. AS 11 - T96-B)

Used on Tractors up to Serial No. 500

For Tractors Serial No. 501 up see Transmission Page 13

Ref. No.	Part No.	Page No.
1	T96-2	10
2	T96-2½	10
3	T96-15	10
4	T96-13	10
5	4682K	10
6	T96-11	10
7	T96-19	10
8	T84F-14	10
9	4686	10
10	T96-12	10
11	X3203G	10
12	T84-7½	10
13	T96-145½	10
14	T96-8	10
15	T96-28	10
16	T96-29	10
17	T96-30	10
18	T96-32	10
19	T86-166	10
20	T96-33	10
21	T96-3	10
22	T96-35	10
23	T84G-48	10
24	T96-10	10
25	T96-85	10
26	T84G-6E	10
27	T84-145A	10
28	T96-16A	10
29	X3204G	10
30	B7070	10
31	T84-17	10
32	T90A-136	10
33	T84G-26	10
34	T96-148E	10
35	4023B	10
36	4572F	10
37	T96-20E	10
38	T96-21E	10
39	T96-23E	10
40	T96-24E	10
41	4583	10
42	T88-42	10
43	T90-86	10
44	418-7A	10
45	X2137	11A
46	4572D	11A
47	T96-115	11A
48	AC96-2F	11A
49	C37J-2½A	11A
50	X1929	11A
51	C37J-50A	11A
52	A158-256	11A
53	A158-243-1	11A
54	A158-243-2	11A
55	B158-62	11A
56	A158-61	11A
57	A158-221	11A

Figure and Reference No.	Part No.	DESCRIPTION
		TRANSMISSION
6-45	X2137	Steel Ball 3/8"
6-46	4572D	Taper Plug 3/8"
6-47	T96-115 20366-S X2977	Control Housing Gasket Cap Screw 5/16"-18 N.C. x 7/8" Lockwasher 5/16"
6-48	AC96-2F	Control Lever
6-49	C37J-2 1/2 A	Control Lever Fulcrum Ball
6-50	X1929	Round Pin 3/16"
6-51	C37J-50A AS-11-T-96	Control Lever Hand Ball Transmission Assembly Cpl.
6-52	A158-256	Transmission Shaft Collar
6-53	A158-243-1	Drive Shaft Coupling (Serial Nos. 101-500)
6-54	A158-243-2	Coupling Pin (serial Nos. 101-500)
6-55	B158-62	Drive Shaft Spindle Housing Cap Screw 7/16"-14 N.C. x 1 1/4" Lockwasher 7/16"
6-56	A158-61	Drive Shaft Hsg. & Banjo Gasket Cap Screw 3/8"-24 N.F. x 1 1/4" Lockwasher 3/8"
6-57	A158-221	Brake Lock Cotter Pin 3/32" dia. x 3/4"

CAUTION

We caution you against the purchase of replacement parts not made by The Waterloo Manufacturing Co. Ltd. The parts entering into the construction of W.M. Co. products are made from high grade materials, a great many of which are of special S.A.E. specifications to meet the most rigorous requirements. Both the raw materials and the parts during the various processes of manufacture are subjected to frequent and rigid inspections to guard against any possibility of defect in material or workmanship. There are on the market many parts identical in appearance with the genuine W.M. Co. parts but which are made of inferior materials and will not give satisfaction. Insist on getting genuine W.M. Co. parts.

Signed
THE WATERLOO MANUFACTURING CO. LTD.

WISCONSIN

"Air Cooled"

HEAVY DUTY ENGINE

MODEL TE

INSTRUCTION BOOK AND PARTS LIST

ISSUE MM-249

A copy of this Manual is sent out with each Tractor. All points of operation and maintenance have been covered as carefully as possible.

THEREFORE READ INSTRUCTIONS CAREFULLY

Service parts can be obtained from your nearest Wisconsin Dealer. But if further information is required, inquiries sent to the factory will receive prompt attention.

When writing the factory . . . always give the model and serial number of engine referred to.

THIS IS IMPORTANT

Figure and Reference No.	Part No.	DESCRIPTION	No. Pcs.
TRANSMISSION AND DIFFERENTIAL			
	205881	Shift Fork Backing Plate	2
	1H-312	Shift Fork & Backing Plate Rivet	4
	205882	Shift Lug 1st and Reverse	1
	205883	Shift Lug 2nd and 3rd	1
	205899	Mesh Thimble	2
	202200	Mesh Spring	2
	10J-12	Mesh Spring Bail	2
	205900	Interlock	1
7-39	205884	Control Cover	1
7-40	205885	Control Cover Gasket	2
	5C-616	Control Cover Screw & Lockwasher $\frac{3}{8}$ "—16 N.C. x 1" lg.	5
	5C-612	Control Cover Screw & Lockwasher $\frac{3}{8}$ "—16 N.C. x $\frac{3}{4}$ " lg.	1
7-41	205894	Gear Shift Lever	1
7-42	205896	Gear Shift Lever Pin	1
7-43	205897	Gear Shift Lever Dust Cover (Rubber)	1
	201553	Gear Shift Lever Pivot Pin Lockwire	1

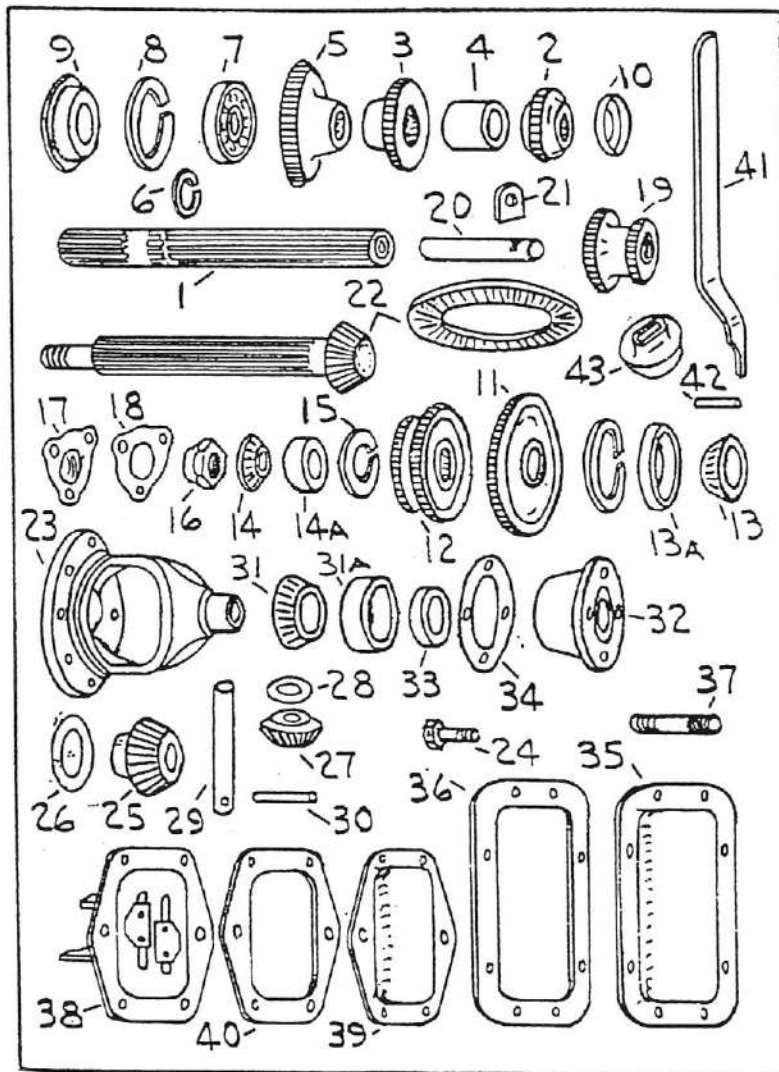


Fig. No. 7—Transmission & Differential (Clark No. T-50 - TS-4)

Used on Tractors Serial No. 501 up
For Tractors Serial Nos. Below 501 see Transmission Page 11

Ref. No.	Part No.	Page No.
1	200902	12
2	205873	12
3	205872	12
4	205866	12
5	205871	12
6	SK-251-46	12
7	SK-200-14	12
8	SK-250-17	12
9	206549	12
10	205886	12
11	205876	12
12	205875	12
13	02875	12
13A	02830	12
14	09078	12
14A	09195	12
15	SK-250-36	12
16	205365	12
17	205887	12
18	205888	12
19	200486	12
20	205867	12
21	201929	12
22	800415	12
23	200022	12
24	206391	12
25	200024	12
26	200026	12
27	200023	12
28	200025	12
29	200027	12
30	200028	12
31	16150	12
31A	16282	12
32	205889	12
33	207539	12
34	205890	12
35	205892	12
36	205893	12
37	203253	12
38	200831	12
39	205884	13
40	205885	13
41	205894	13
42	205896	13
43	205897	13

Figure and Reference No.	Part No.	DESCRIPTION	No. Pcs.
BRAKE ROD — CLUTCH ROD & CROSS-SHAFT ASSEMBLY			
8-1	B158-174	Brake Cross Shaft Assembly (serial No. 101-500)	1
	B158-288	Brake Cross Shaft Ass'y. (Serial No. 501 up)	1
8-2	A158-193	Brake Pedal Assembly	1
8-3		Cotter Pin 1/8" dia. x 1 1/2"	1
8-4	A158-196-200-2	Adjustable Yoke End 3/8"	2
8-5		Light S.F. Hex Nut 3/8"-24 S.A.E.	3
8-6	A158-197	Brake Rod 11 9/16" lg. (Serial Nos. 101-500)	3
	A158-279	Brake Rod 14 1/2" lg. (Serial Nos. 501 up)	2
8-7	A158-199	Brake & Clutch Rod Connecting Pin	2
8-8	A158-201	Clutch Rod (Use as req.)	2
8-9	A158-202	Clutch Pedal Ass'y. (Serial Nos. 101-500)	1
	A158-330	Clutch Pedal Assembly (Serial Nos. 501-700)	1
	B158-395.	Clutch Pedal Ass'y. (Serial Nos. 701 up)	1
8-10	SP-381	Brake & Clutch Return Spring	1
8-11		Cotter Pin 1/8" dia. x 1"	3
8-12	A158-198	Brake Cross Shaft Bearing	3
8-13		Machine Bolt with Hex. Nut 3/8"-16 N.C. x 1 1/4"	2
8-14		Machine Bolt with Hex. Nut 3/8"-16 N.C. x 2"	2
8-15		Cotter Pin 1/8" dia. x 1 1/2" (For Clutch Pedal Ass'y.)	2

RULES FOR SAFE TRACTOR OPERATION

- Be sure the gear shift lever is in neutral before cranking engine.
- Always engage the clutch gently, especially when going up a hill or pulling out of a ditch.
- When driving on highways, or to and from fields, be sure that both wheels are braked simultaneously, when making an emergency stop.
- Always ride on seat of tractor. Never ride on drawbar of tractor or drawn implement.
- When tractor is hitched to a stump or heavy load, always hitch to drawbar and never take up slack of chain with a jerk.
- Be extra careful when working on hillsides. Watch out for holes or ditches into which a wheel may drop and cause tractor to overturn.
- Always keep tractor in gear when going down steep hills or grades.
- Always drive tractor at speeds slow enough to insure safety, especially over rough ground or near ditches.
- Reduce speed before making a turn or applying brakes, the hazard of over-turning the tractor increases four times when speed is doubled.
- Always stop power take-off before dismounting from tractor.
- Never dismount from tractor when it is in motion. Wait until it stops.
- Never permit persons other than the driver to ride on tractor when it is in operation.