

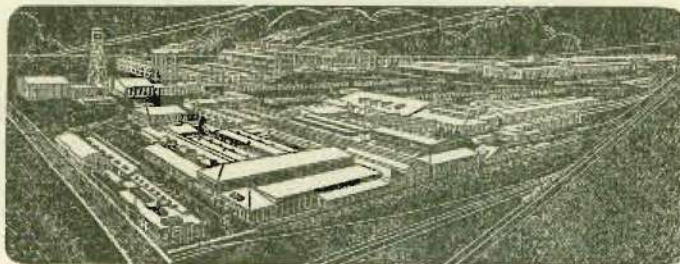
Waterloo
"Bronco"
Tractors
and Attachments



FRICK COMPANY, INC.

WAYNESBORO, PENNA., U. S. A.

D. N. BENEDICT, PRES. & GEN'L MGR.
W. H. AUBREY, VICE PRESIDENT
W. R. SNIVELY, VICE PRESIDENT
A. E. ROSCHLI, SEC'Y & TREAS.
A. A. DETWILER, ASST. SEC'Y.
R. W. CLINE, ASST. TREASURER



REFRIGERATING AND
ICE-MAKING MACHINERY
AMMONIA, CO₂, FREON-12
AND METHYL CHLORIDE SYSTEMS
AIR CONDITIONING
STEAM ENGINES, BOILERS
GAS TRACTORS
GRAIN THRESHERS
SAW MILL MACHINERY

ADDRESS ALL COMMUNICATIONS
TO THE COMPANY

ESTABLISHED 1853

CABLE ADDRESS
FRICK (WAYNESBORO) PENNA

FRICK COMPANY

(INCORPORATED)

WAYNESBORO, PENNA., U.S.A.

May 2, 1950
TUESDAY

FARM MACHINERY DIVISION LETTER NO. 656
RE: "BRONCO" Tractor Line

ALL BRANCHES, DETACHED SALESMEN
& FARM MACHINERY DEALERS:

The line of "Bronco" Tractors and attachments for same as manufactured by the Waterloo Manufacturing Co., Ltd., Waterloo, Ontario is now incorporated in our line of equipment on a distributor basis and we have exclusive sales rights on same for that part of the U.S.A., lying east of a line drawn from Erie, Penna. to New Orleans, La.

The "Bronco" Line will be sold direct to the trade in territories surrounding branches and in territories where we do not have contract dealers and through contract dealers having Farm Machinery Rider No. 1 incorporated in their agreements. The discounts to Frick contract dealers are 10% on time terms and 15% on cash terms.

This line of equipment should find a large market to large farmers needing a small tractor in their operations, small tobacco farmers, small cotton farmers and to wealthy men having large estates, etc.

On large estates or residential properties this small tractor and the attachments which go with it will find innumerable uses such as plowing snow from drive ways and walks, leveling gravel on drive-ways and walks, mowing weeds from paddocks, plowing and cultivating gardens and truck patches, mowing lawns, etc. etc. This tractor can also be put to good use on private and public golf courses. Many other uses for this equipment will come to the mind of every intelligent salesman. First cost, upkeep and operating cost will be low.

A price list on the "Bronco" Tractor and attachments is attached hereto, also a brief comparison of prices with a few competitive models. It is stated by the manufacturers that the "Bronco" Tractor will perform in the field in a manner that equals or surpasses the IHC "Cub" or the Massey Harris "Pony". In crucial tests in the Waynesboro area the "Bronco" Tractor has proven to the writer's satisfaction that it is well built, of good material and that it will perform well under most conditions when loaded within its rated horse power.

ALL CONTRACTS ARE SUBJECT TO APPROVAL AT OUR HOME OFFICE, WAYNESBORO, PENNA., AND ARE CONTINGENT UPON STRIKES, ACCIDENTS, AND OTHER DELAYS BEYOND OUR CONTROL. QUOTATIONS SUBJECT TO CHANGE WITHOUT NOTICE.



It must be remembered that this is a small tractor and that it should not be "Over-sold". Since the Power Plant is a Wisconsin Air Cooled Motor this tractor should never be loaded to a point where the engine is under full load continuously. According to our experience an Air Cooled Motor will not stand up under a continuous over-load. On the other hand if the tractor is operated properly with a load which the engine can handle without laboring, we believe the durability of both the engine and the entire tractor will be good.

At present there is a small live belt pulley on the drive-shaft of the "Bronco" Tractor which may be used for light belt power work. A little later it is the intention of the manufacturer to furnish a Clark Unit which incorporates a belt pulley and a PTO shaft to the rear of the tractor at extra cost. Details on this Unit will be distributed in due course.

All Tractors which we sell will be equipped standard with 8 x 24 Tires, Drawbar, Fenders, Lights, Electric Starter and Hand Lift for Plow, Cultivator and Mower at the prices shown in the price list attached. A Battery is included in the price of the Starter.

As a beginning one carload consisting of eight (8) Tractors, eight (8) Plows, four (4) Mowers, four (4) Cultivators and one (1) Combination Plow and Bull Dozer and an assortment of repair parts has been ordered to each of the following points:

Augusta, Me., Atlanta, Ga., and Waynesboro, Penna.

Other Branches that desire carload shipments promptly may submit requisitions at once for consideration of this office. It is contemplated that Branches which desire a single sample tractor can be supplied by incorporating Tractor and attachments with carload shipments of other machinery from Waynesboro.

Supply of sales literature, price lists parts and instructions books will be distributed to Branches shortly.

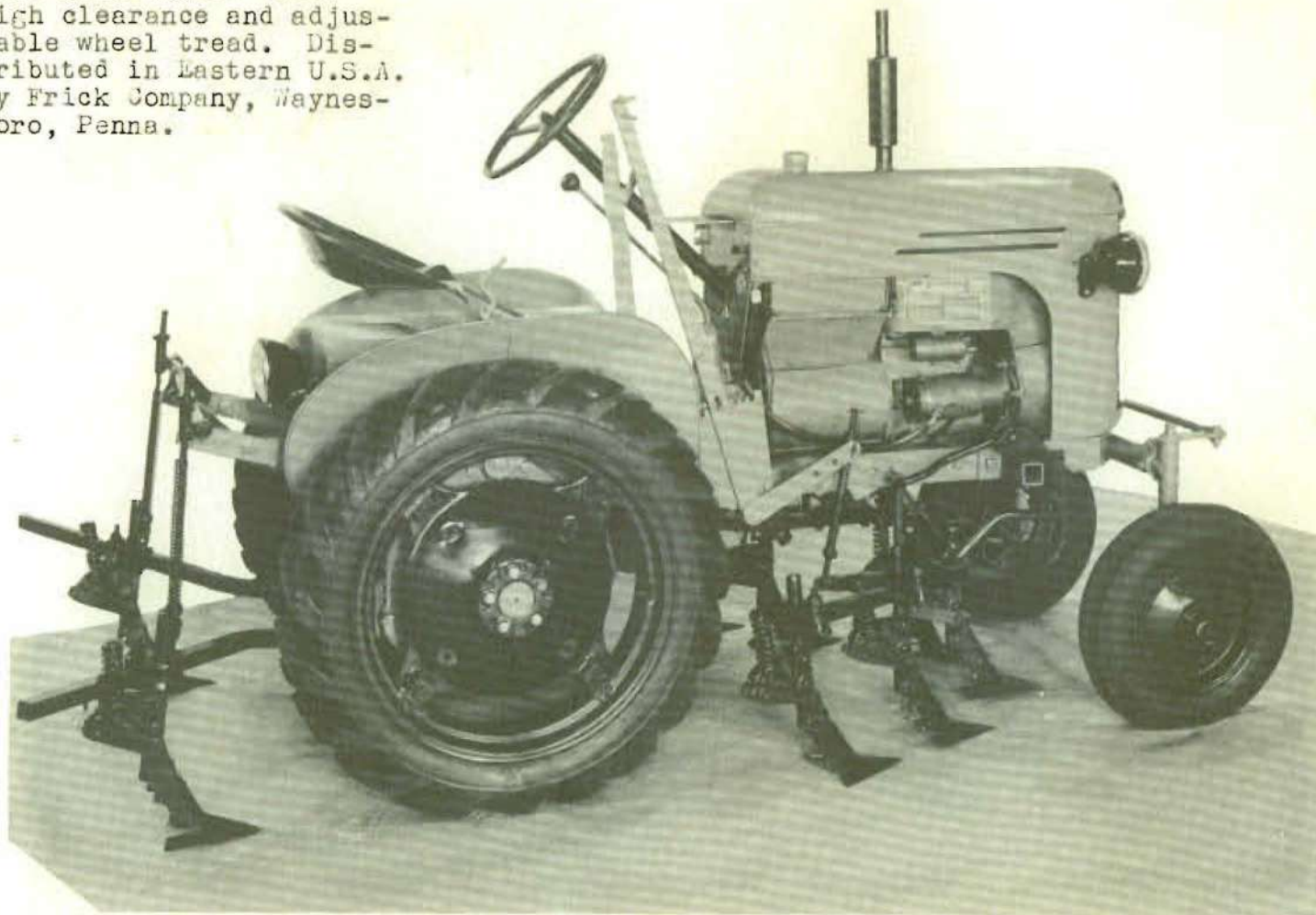
Very truly yours,

FRICK COMPANY

BY: *Edw. S. Warfield*
Sales Manager
Farm Machinery Division

ESW:BJS
Attach.

Waterloo "Bronco"
Tractor with one-row hand-
lift cultivator. Note
high clearance and adjus-
table wheel tread. Dis-
tributed in Eastern U.S.A.
by Frick Company, Waynes-
boro, Penna.

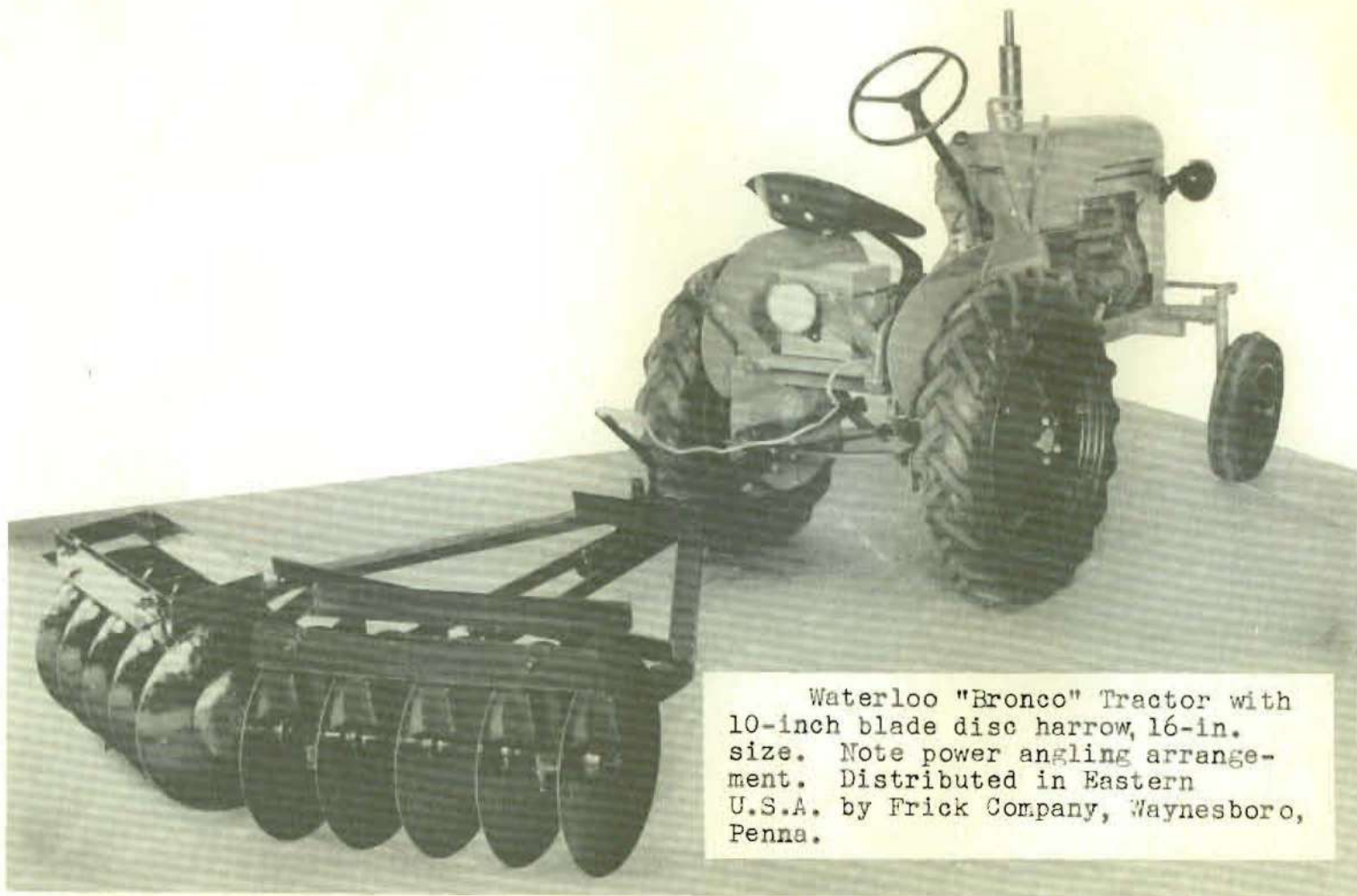




Waterloo "Bronco" Tractor with 5-ft. side-mounted sickle mower. Distributed in Eastern U.S.A. by Frick Company, Waynesboro, Penna.



Waterloo "Bronco" Tractor at work with one-row hand-lift cultivator. Note high clearance and adjustable tread. Distributed in the Eastern U.S.A. by Frick Company, Waynesboro, Penna.

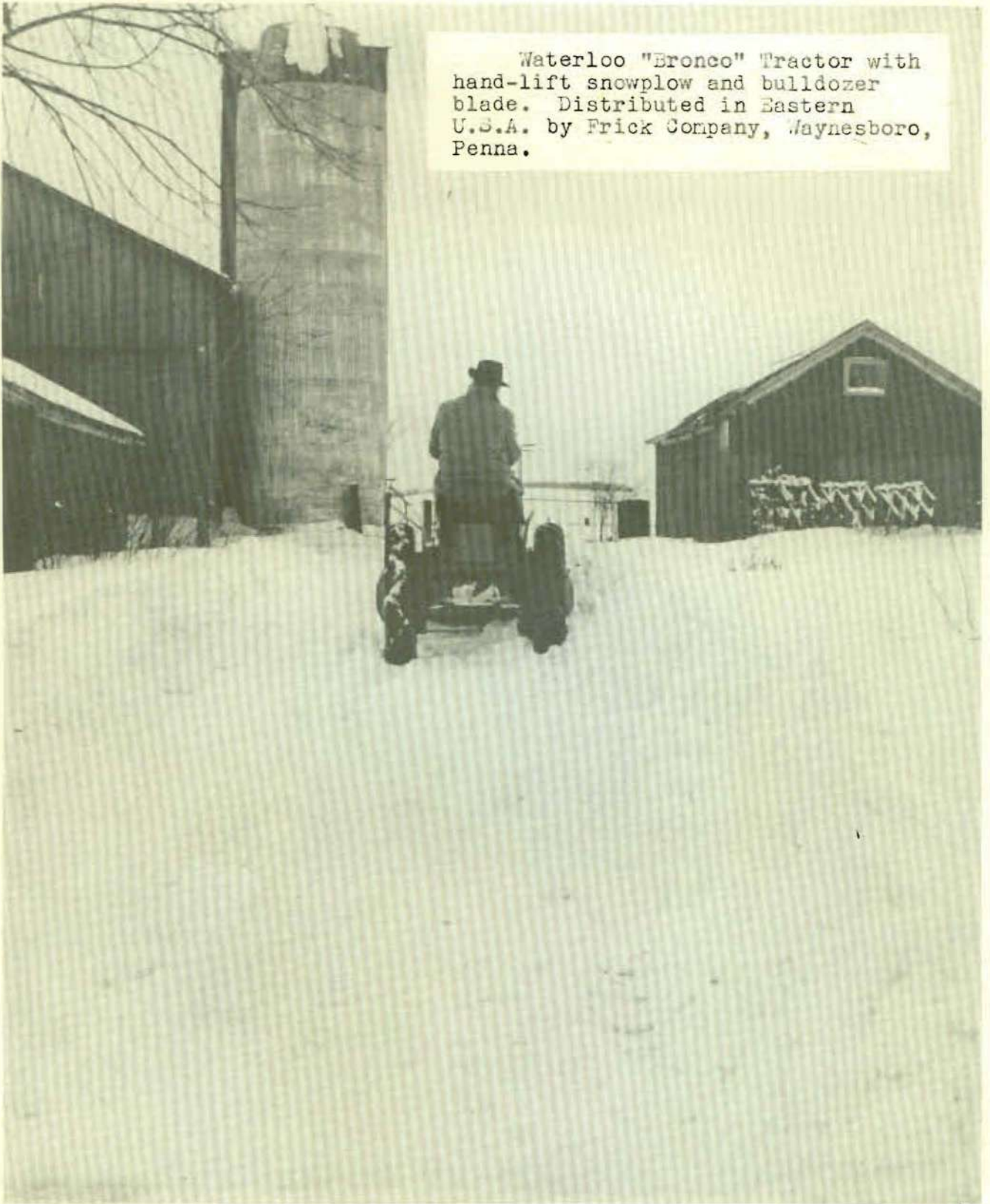


Waterloo "Bronco" Tractor with
10-inch blade disc harrow, 16-in.
size. Note power angling arrange-
ment. Distributed in Eastern
U.S.A. by Frick Company, Waynesboro,
Penna.

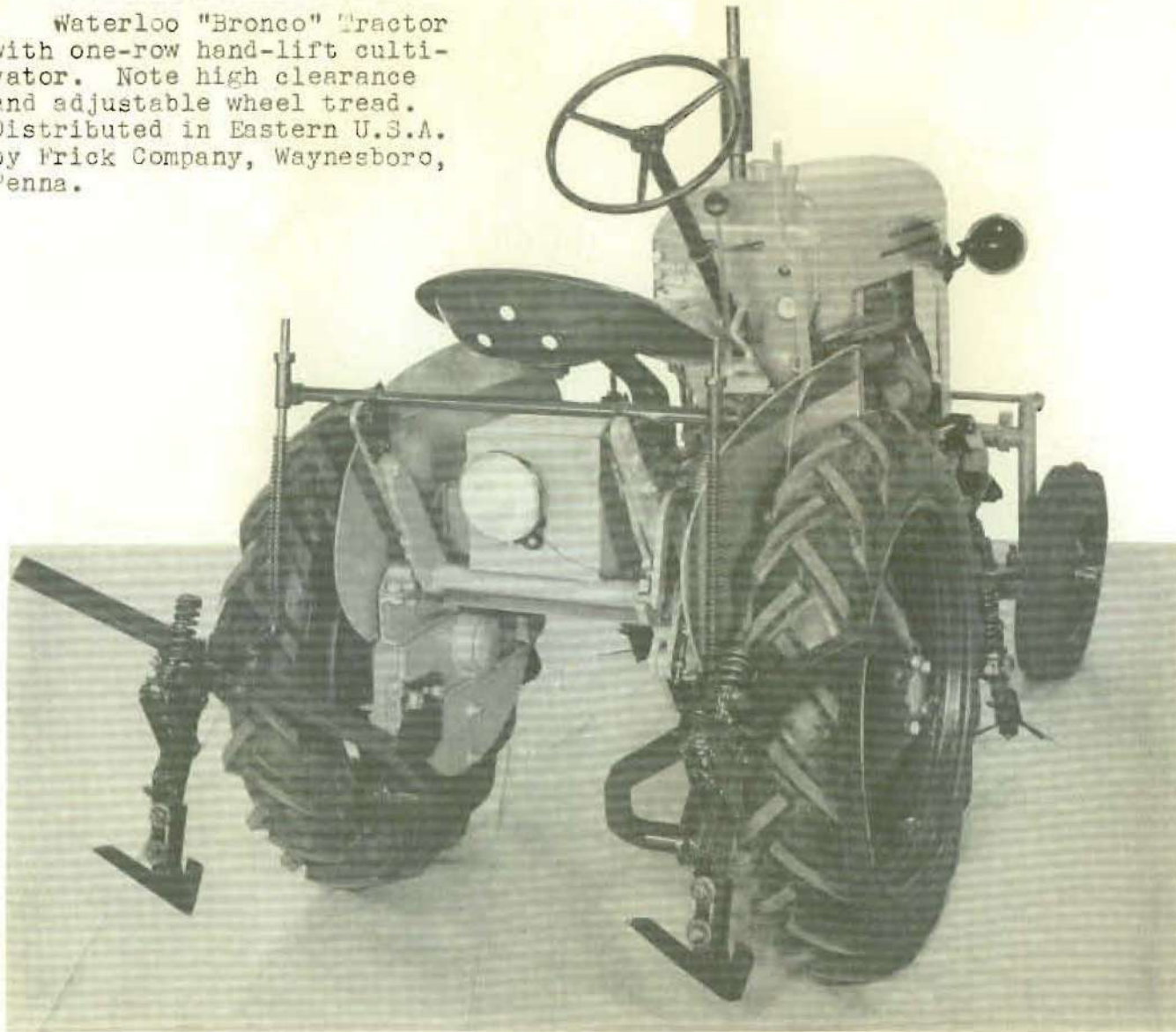
Waterloo "Bronco" tractor with hand-
lift bulldozer and snowplow blade. Dis-
tributed in the Eastern U.S.A. by Frick
Company, Waynesboro, Penna.



Waterloo "Bronco" Tractor with
hand-lift snowplow and bulldozer
blade. Distributed in Eastern
U.S.A. by Frick Company, Waynesboro,
Penna.



Waterloo "Bronco" Tractor
with one-row hand-lift culti-
vator. Note high clearance
and adjustable wheel tread.
Distributed in Eastern U.S.A.
by Frick Company, Waynesboro,
Penna.



Waterloo "Bronco" Tractor plowing heavy limestone soil on farm of Jacob Horst, near Laugansville, Md., March 17, 1950. Ten-inch mold-board plow. Distributed in Eastern U.S.A. By Frick Company, Waynesboro, Penna.



*"Bronco" Tractor Plowing on Farm of Jacob Horst, near
Maugansville, Md., March 17, 1950. Preston Horst, Operator.*



Hester Disc Plow on 9-Year-Old M-M "Z" Tractor at Farm of Jacob Horst, near Maugansville, Md., March 17, 1950. John Parmer, Frick Field Service Man, Operator.



FRICK COMPANY, INC.

WAYNESBORO, PENNA.

Exclusive distributor in Eastern U. S. A.

WATERLOO BRONCO - 10 H.P. TRACTORS

All prices are F.O.B. Waterloo, Ontario, Canada

Effective - May 1, 1950

Subject to change without notice.

	<u>Weight</u>	<u>Price</u>
Tractor with crank starter 7:00 x 24 tires	1,309	\$723.00
Tractor with crank starter 8:00 x 24 tires	1,329	735.00
Draw Bar	38	6.00
Fenders (Pair)	13	6.50
Lights - 2 front, 1 rear	8	18.00
Electric Starter	81	55.00
Handlift for Plow, Cultivator & Mower	100	35.00
10" Plow with Coulter	158	65.00
Disc Harrow 10 Blades 16"	352	85.00
Row Crop Cultivator	310	88.00
Field Mower 60"	266	135.00
Snow Plow	229	63.00
Power Take-off	(Weight and Price to Follow)	

NOTE: Above price of \$55.00 for starter applies only when ordered as original equipment. If tractor is purchased with crank starter and later converted to electric starter, price will be \$105.00

"Bronco" 2-Cyl.	Allis-Chalmers Model "G"	Farmall "Cub"	John Deere Model "L"	Remarks
Equipped with 4.00 12 Front, 7.00-24 Rear Tires.	Equipped with 4.00 12 Front, 6.30 Rear Tires.	Equipped with 4.00 12 Front, 7.00-24 Rear Tires.	Equipped with Pneu. Tires.	The price of the John Deere Tractor is an estimate offered by dealer in Waterville, Maine.
Lights and Starter	Lights and Starter	Lights and Starter	Lights and Starter	
Hand Lift for Plow, Cultivator, Mower,	Hand Lift and Tool Carrier	Power Take Off	Belt Pulley Power Take Off	
Drawbar				
F.O.B. Waynesboro Penna.	F.O.B. Chambersburg Penna.	F.O.B. Augusta, Me.	F.O.B. Waterville, Maine	
\$851.20	\$885.00	\$854.00	\$750.00	
10" Plow with Coulter	112" Plow	R.H. Single Plow		The Tractor complete with Tools is estimated at \$1000.00
\$67.00	\$75.00	\$76.00		
5' Mower	Mower	Mower		
\$137.50	\$185.00	\$100.00		
Cultivator	Cultivator	Cultivator		
\$91.00	\$45.00	\$78.00		

APR 15 1950