

PARTS MANUAL

JUNE 2001

Allmand™

ESL DESIGN
BACKHOES

MODELS
BH85 AND BH100

ALLMAND BROS. INC
P.O. BOX 888
HOLDREGE, NE 68949

PHONE: 308/995-4495, 1-800/562-1373
ALLMAND FAX: 308/995-5887
ALLMAND PARTS FAX: 308/995-4883



For Parts and Updates visit Allmand on the Web at www.allmand.com

<https://tractormanualz.com/>

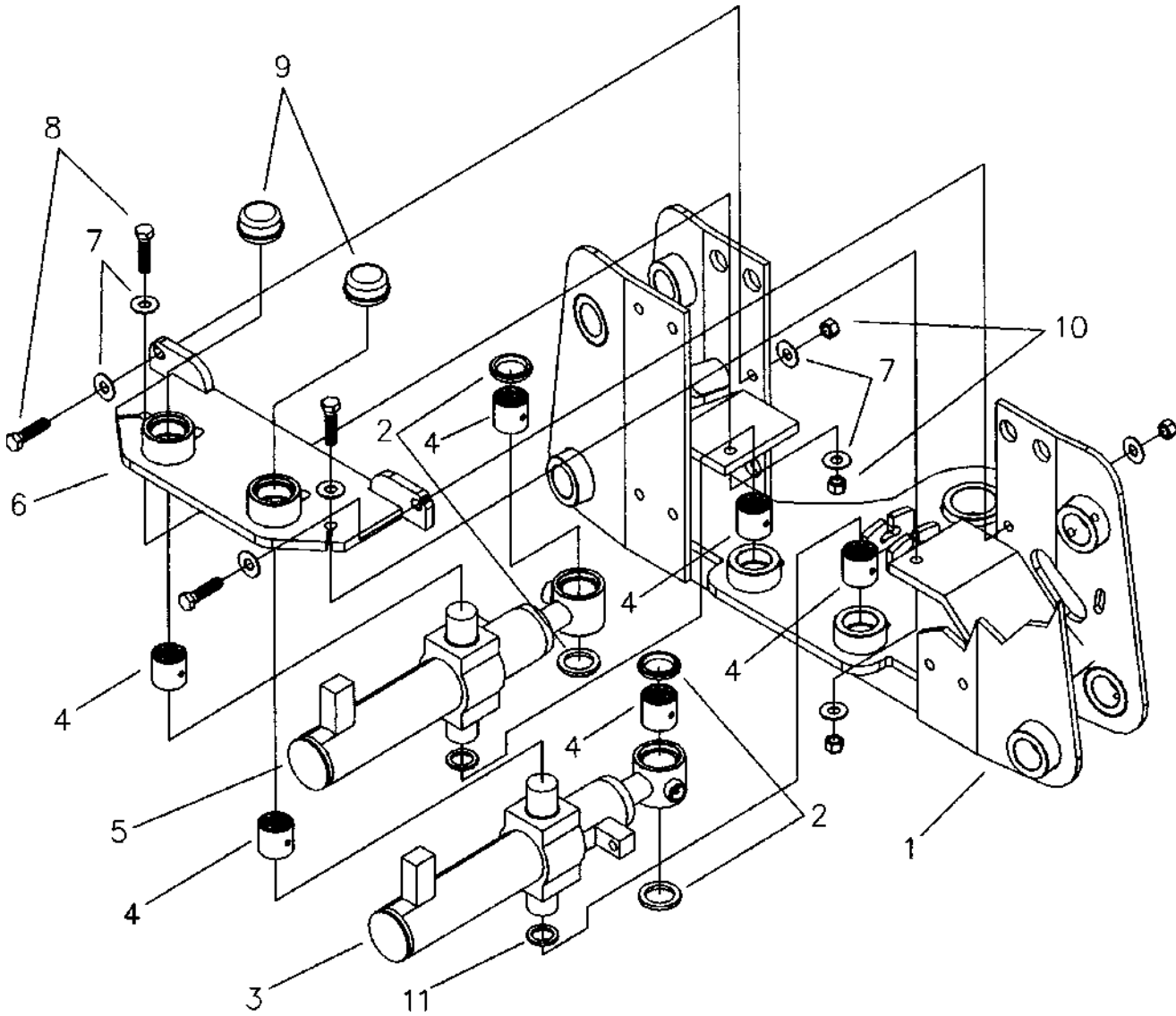


TABLE OF CONTENTS

| | |
|----------------------------------------------------------|------------|
| SWING POST TRUNNION ASSEMBLY (A-1A) | PAGE 46 |
| SWING POST TRUNNION ASSEMBLY PARTS (A-1B) | PAGE 47 |
| MAIN FRAME AND STABILIZER ASSEMBLY (A-1C) | PAGE 48 |
| MAIN FRAME AND STABILIZER ASSEMBLY PARTS (A-1D) | PAGE 49 |
| VALVE COVER PLATE ASSEMBLY (A-1E) | PAGE 50 |
| VALVE COVER PLATE ASSEMBLY PARTS (A-1F) | PAGE 51 |
| MAIN FRAME-SWING POST ASSEMBLY (A-2A) | PAGE 52 |
| MAIN FRAME-SWING POST ASSEMBLY PARTS (A-2B) | PAGE 53 |
| SWING POST AND 8 1/2 FT BOOM ASSEMBLY (A-3A) | PAGE 54 |
| SWING POST AND 8 1/2 FT BOOM ASSEMBLY PARTS (A-3B) | PAGE 55 |
| 8 1/2 FT BOOM AND DIPPER ASSEMBLY (A-3C) | PAGE 56 |
| 8 1/2 FT BOOM AND DIPPER ASSEMBLY PARTS (A-3D) | PAGE 57 |
| SWING POST AND 10 FT. BOOM ASSEMBLY (A-3E)..... | PAGE 58 |
| SWING POST AND 10 FT. BOOM ASSEMBLY PARTS (A-3F)..... | PAGE 59 |
| 10 FT BOOM AND DIPPER ASSEMBLY (A-3G)..... | PAGE 60 |
| 10 FT BOOM AND DIPPER ASSEMBLY PARTS (A-3H) | PAGE 61 |
| 8 1/2 FT DIPPER AND BUCKET ASSEMBLY (A-4A) | PAGE 62 |
| 8 1/2 FT DIPPER AND BUCKET ASSEMBLY PARTS (A-4B) | PAGE 63 |
| 10 FT DIPPER AND BUCKET ASSEMBLY (A-4C) | PAGE 64 |
| 10 FT DIPPER AND BUCKET ASSEMBLY PARTS (A-4D) | PAGE 65 |
| 8 1/2 FT HYDRAULIC HOSE ASSEMBLIES (A-5A) | PAGE 66 |
| 8 1/2 FT HYDRAULIC HOSE ASSEMBLY PARTS (A-5B) | PAGE 67 |
| 10 FT HYDRAULIC HOSE ASSEMBLIES (A-5C) | PAGE 68 |
| 10 FT HYDRAULIC HOSE ASSEMBLY PARTS (A-5D) | PAGE 69 |
| SAFETY AND OPERATION DECALS..... | PAGE 70-71 |

SWING POST TRUNNION ASSEMBLY

A-1A



SWING POST TRUNNION ASSEMBLY PARTS

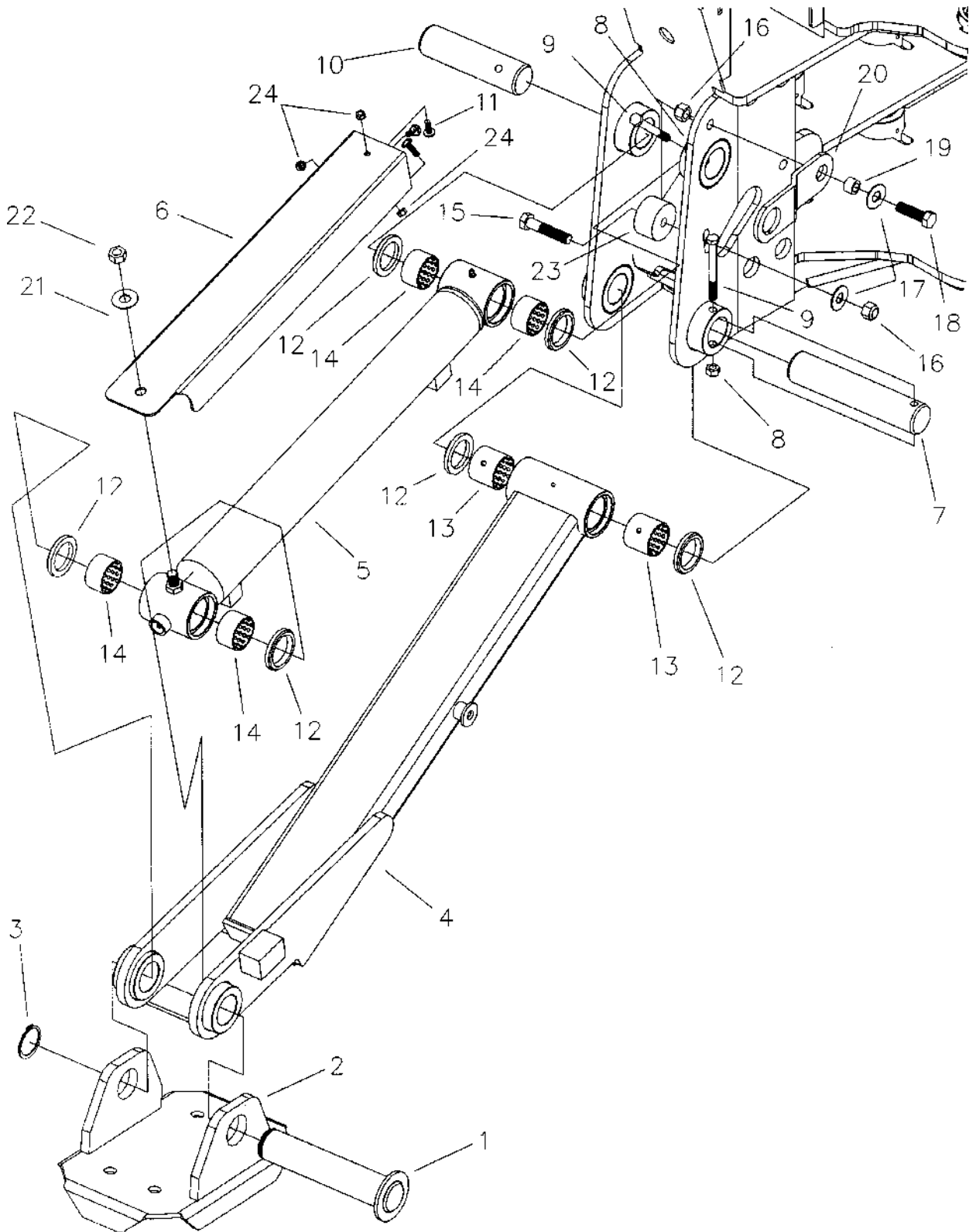
A-1B

| NO | REQ'D | PART NO | DESCRIPTION |
|----|-------|---------|-----------------------------|
| 1 | 1 | 923060 | BACKHOE MAINFRAME |
| 2 | 4 | 923040 | BEARING SEAL |
| 3 | 1 | 923159 | LEFT SWING CYLINDER |
| 4 | 6 | 923043 | GARLOCK BEARING |
| 5 | 1 | 923160 | RIGHT SWING CYLINDER |
| 6 | 1 | 923110 | SWING CYLINDER COVER |
| 7 | 16 | 047025 | 1/2 FLAT WASHER |
| 8 | 8 | 046195 | 1/2-13 NC x 2" GRADE 5 BOLT |
| 9 | 2 | 330005D | DUST CAP |
| 10 | 8 | 044048 | 1/2-13 NC NYLON INSERT NUT |
| 11 | 2 | 041089 | SPACER WASHER |
| NS | | 923579 | SEAL KIT FOR 923159/923160 |

LEGEND: NS = Not Shown
** = Purchase locally

MAINFRAME AND STABILIZER ASSEMBLY

A-1C



MAINFRAME AND STABILIZER ASSEMBLY PARTS

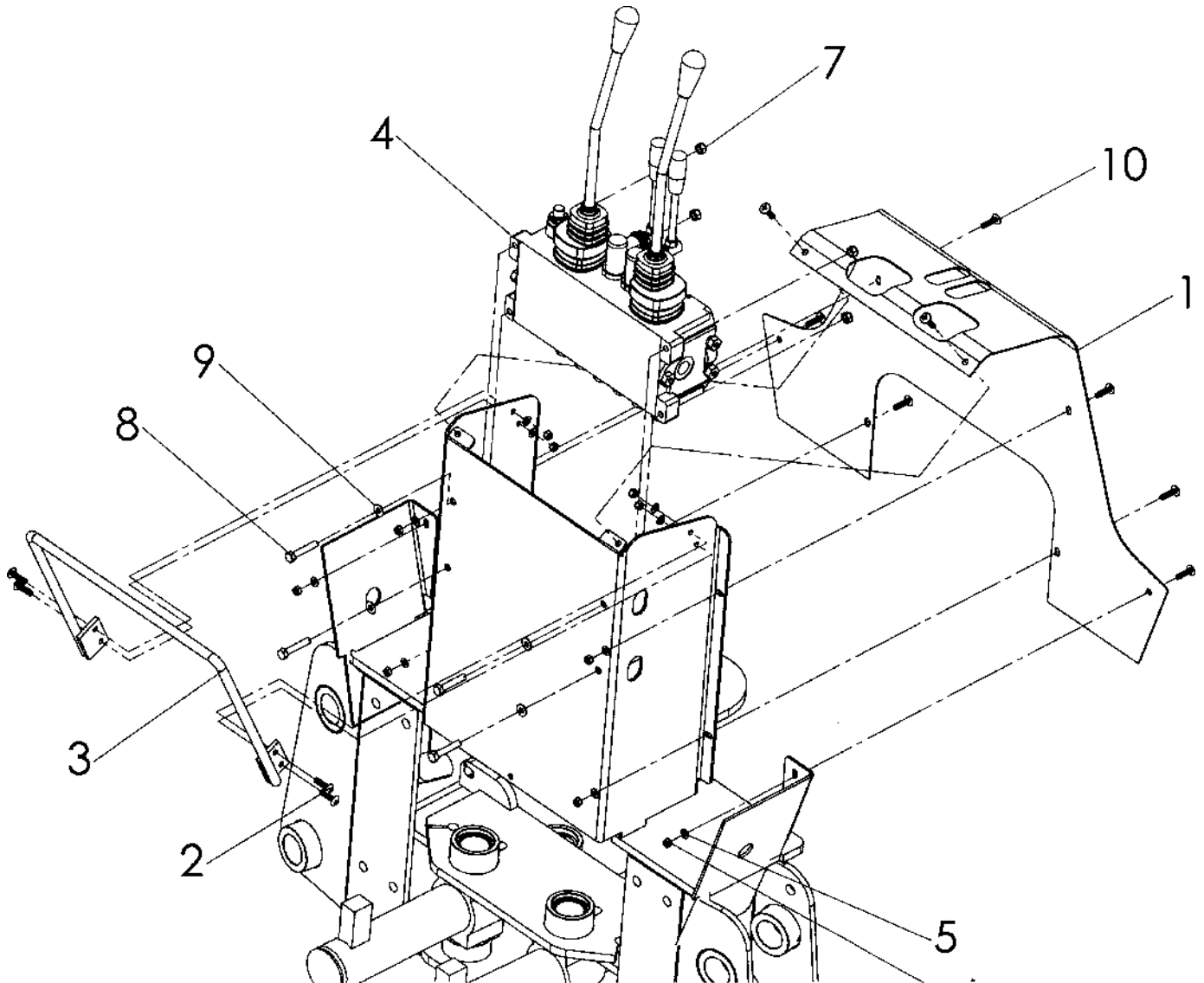
A-1D

| NO | REQ'D | PART NO | DESCRIPTION |
|----|-------|---------|-------------------------------------|
| 1 | 2 | 923113 | STABILIZER FOOT PIN ASSEMBLY |
| 2 | 2 | 923075 | STABILIZER FOOT |
| 3 | 2 | 923206 | EXTERNAL LOCK RING |
| 4 | 1 | 923078 | STABILIZER ASSEMBLY LEFT |
| NS | 1 | 923347 | STABILIZER ASSEMBLY RIGHT |
| 5 | 2 | 923587 | STABILIZER CYLINDER, 8-1/2' BACKHOE |
| 6 | 2 | 923109 | STABILIZER GUARD |
| 7 | 2 | 923145 | STABILIZER MOUNTING PIN |
| 8 | 4 | 044080 | 3/8-16 NC TOP LOCK NUT |
| 9 | 4 | 046138 | 3/8-16 NC x 3" GRADE 5 BOLT |
| 10 | 2 | 923147 | STABILIZER CYLINDER MOUNTING PIN |
| 11 | 6 | 041250 | 1/4-20 NC x 1/2 PLASTIC BOLT |
| 12 | 6 | 923041 | BEARING SEAL |
| 13 | 2 | 923045 | GARLOCK BEARING |
| 14 | 4 | 923044 | GARLOCK BEARING |
| 15 | 2 | 046200 | 1/2-13 X 2-1/4 GRADE 5 BOLT |
| 16 | 4 | 044048 | 1/2-13 NYLON INSERT NUT |
| 17 | 4 | 047025 | 1/2 FLAT WASHER |
| 18 | 2 | 046186 | 1/2-13 X 1-3/4 GRADE 5 BOLT |
| 19 | 2 | 923352 | STABILIZER LOCK SPACER |
| 20 | 2 | 930430 | STABILIZER LATCH |
| 21 | 2 | 047025 | 1/2 FLAT WASHER |
| 22 | 2 | 044101 | 1/2-13 CENTER LOCK NUT |
| 23 | 1 | 923194 | STABILIZER STOP |
| 24 | 6 | 044023 | 1/4-20 NYLOCK NUT |
| NS | | 923588 | SEAL KIT FOR 923587 |

LEGEND: NS = Not Shown
** = Purchase locally

VALVE COVER PLATE ASSEMBLY

A-1E



VALVE COVER PLATE ASSEMBLY PARTS

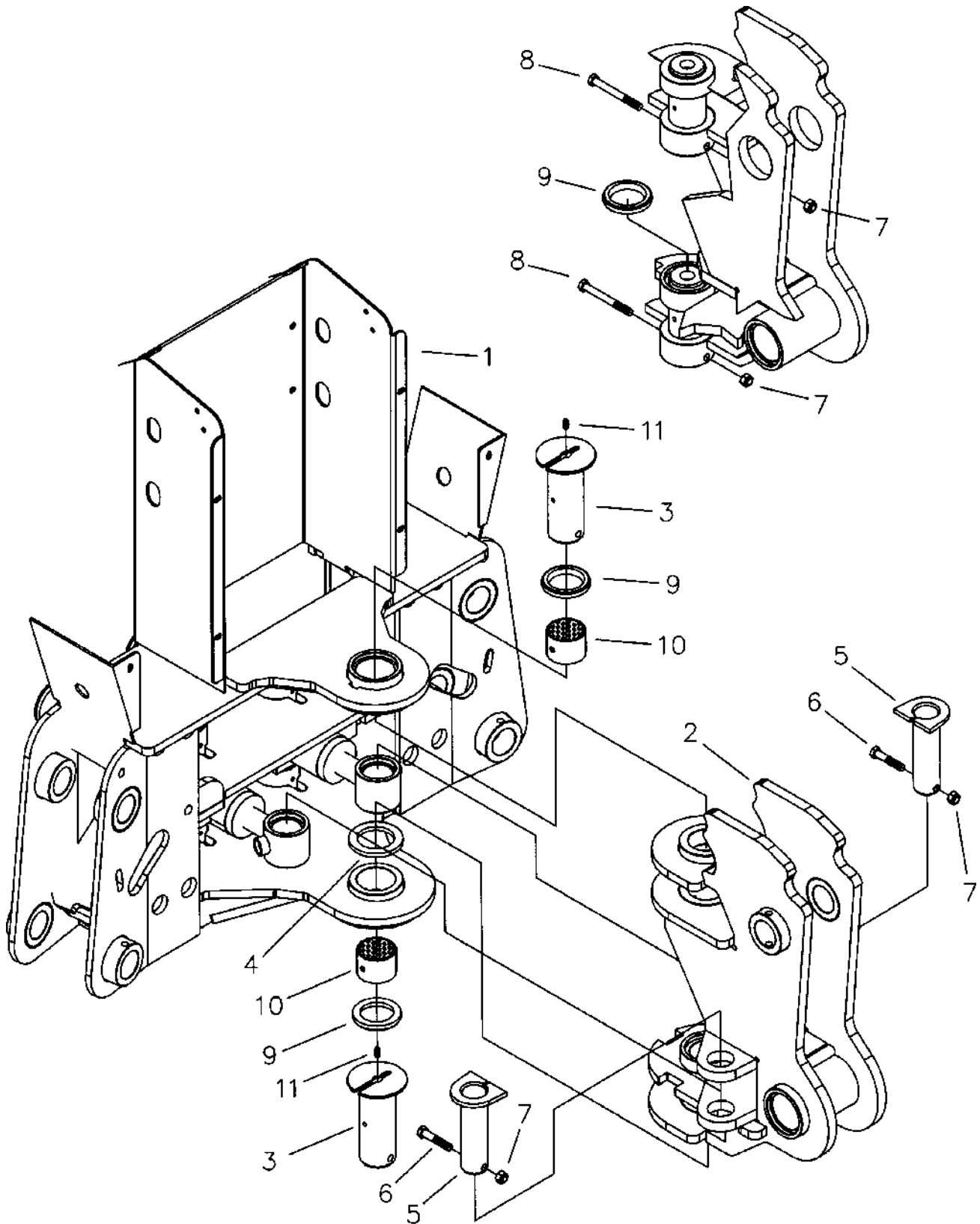
A-1F

| NO | REQ'D | PART NO | DESCRIPTION |
|----|-------|---------|-----------------------------------|
| 1 | 1 | 923107 | BACKHOE VALVE COVER PLATE |
| 2 | 4 | 041080 | 1/4-20 NC x 1" TRUSS HEAD SCREW |
| 3 | 1 | 923120 | WRIST SUPPORT ASSEMBLY |
| 4 | 1 | 923330 | WALVOIL VALVE ASSEMBLY |
| 5 | 10 | 047009 | 1/4 FLAT WASHER STAINLESS STEEL |
| 6 | 10 | 044023 | 1/4-20 NC NYLON INSERT NUT |
| 7 | 4 | 044033 | 5/16-18 NYLON INSERT NUT |
| 8 | 4 | 046065 | 5/16-18 X 1-3/4 GRADE 5 BOLT |
| 9 | 4 | 047005 | 1/4" FLAT WASHER |
| 10 | 10 | 041050 | 1/4-20 NC x 3/4" TRUSS HEAD SCREW |

LEGEND: NS = Not Shown
** = Purchase locally

MAIN FRAME-SWING POST ASSEMBLY

A-2A



MAIN FRAME-SWING POST ASSEMBLY PARTS

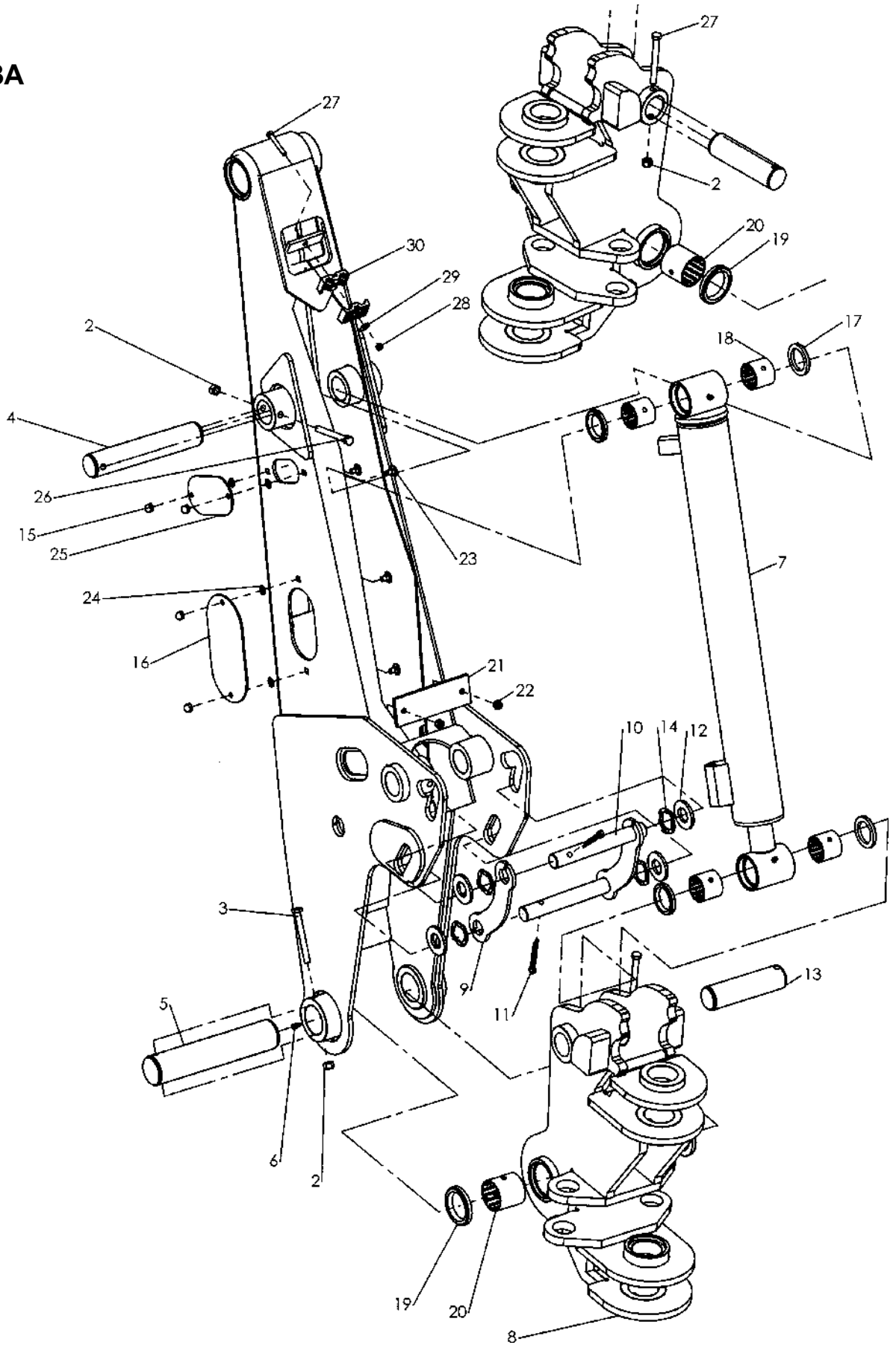
A-2B

| NO | REQ'D | PART NO | DESCRIPTION |
|----|-------|---------|--------------------------------|
| 1 | 1 | 923060 | BACKHOE MAINFRAME |
| 2 | 1 | 923084 | SWING POST WELDMENT |
| 3 | 2 | 923152 | SWING POST MOUNTING PIN |
| 4 | 1 | 923115 | SWING POST THRUST WASHER |
| 5 | 2 | 923118 | SWING CYLINDER PIN ASSEMBLY |
| 6 | 2 | 046130 | 3/8-16 NC x 2" GRADE 5 BOLT |
| 7 | 4 | 044080 | 3/8-16 NC TOPLOCK NUT |
| 8 | 2 | 046138 | 3/8-16 NC x 3-1/2 GRADE 5 BOLT |
| 9 | 3 | 923042 | BEARING SEAL |
| 10 | 2 | 923046 | GARLOCK BEARING |
| 11 | 2 | 401256 | STRAIGHT ZERK FITTING |

LEGEND: NS = Not Shown
** = Purchase locally

SWING POST AND 8 1/2 FT. BOOM ASSEMBLY

A-3A



SWING POST AND 8 1/2 FT. BOOM ASSEMBLY PARTS

A-3B

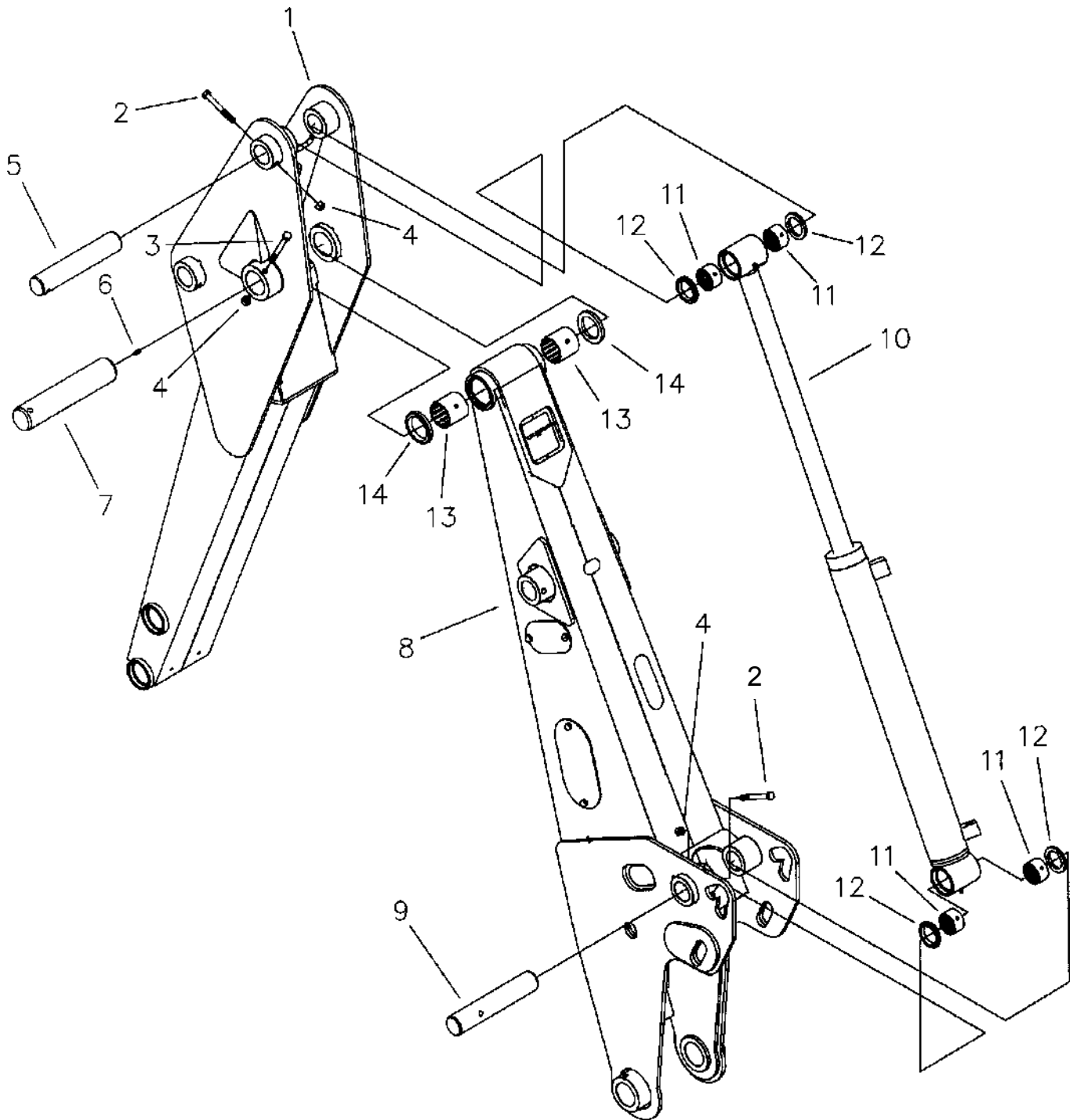
| NO | REQ'D | PART NO | DESCRIPTION |
|-----------|--------------|----------------|----------------------------------------------|
| 1 | 1 | 923093 | BACKHOE BOOM, 8-1/2' |
| 2 | 3 | 044080 | 3/8-16 NC TOP LOCK NUT |
| 3 | 1 | 046138 | 3/8-16 NC x 3-1/2 GRADE 5 BOLT |
| 4 | 1 | 923146 | BOOM CYLINDER BASE END MOUNTING PIN |
| 5 | 1 | 923153 | BACKHOE BOOM / SWING POST PIN |
| 6 | 1 | 401256 | STRAIGHT ZERK FITTING |
| 7 | 1 | 923300 | BOOM CYLINDER, 8-1/2' BACKHOE |
| 8 | 1 | 923084 | SWING POST WELDMENT |
| 9 | 1 | 923117 | BOOM LOCK LINKAGE ARM |
| 10 | 1 | 923116 | BOOM LOCK LINKAGE ASSEMBLY |
| 11 | 2 | 045012 | COTTER PIN, 1/4 X 1-3/4 |
| 12 | 4 | 923059 | BOOM LOCK NYLON WASHER |
| 13 | 1 | 923149 | BOOM CYLINDER ROD END MOUNTING PIN |
| 14 | 4 | 923224 | WAVY WASHER, 1-3/4 O.D. x 1" I.D. x .025 THK |
| 15 | 4 | 044027 | 5/16-18 ACORN NUT |
| 16 | 1 | 923349 | LARGE COVER |
| 17 | 4 | 923041 | BEARING SEAL |
| 18 | 4 | 923044 | GARLOCK BEARING |
| 19 | 2 | 923042 | BEARING SEAL |
| 20 | 2 | 923047 | GARLOCK BEARING |
| 21 | 1 | 923219 | BOOM HOSE PLATE |
| 22 | 2 | 044033 | 5/16-18 NC NYLON INSERT NUT |
| 23 | 4 | 053029 | 5/16-18 NC X 1/2 CARRIAGE BOLT |
| 24 | 4 | 045217 | 5/16-18 NC PUSHNUT BOLT RETAINER |
| 25 | 1 | 923350 | SMALL COVER |
| 26 | 2 | 046137 | 3/8-16 X 3" GRADE 5 BOLT |
| 27 | 1 | 046030 | 1/4-20 X 1-3/4 GRADE 5 BOLT |
| 28 | 1 | 044023 | 1/4-20 NC NYLON INSERT NUT |
| 29 | 1 | 047005 | 1/4 WASHER |
| 30 | 2 | 923227 | CLAMP HALVES |
| NS | | 923580 | SEAL KIT FOR 923300 |

LEGEND: NS = Not Shown

** = Purchase locally

8 1/2 FT. BOOM AND DIPPER ASSEMBLY

A-3C



8 1/2 FT. BOOM AND DIPPER ASSEMBLY PARTS

A-3D

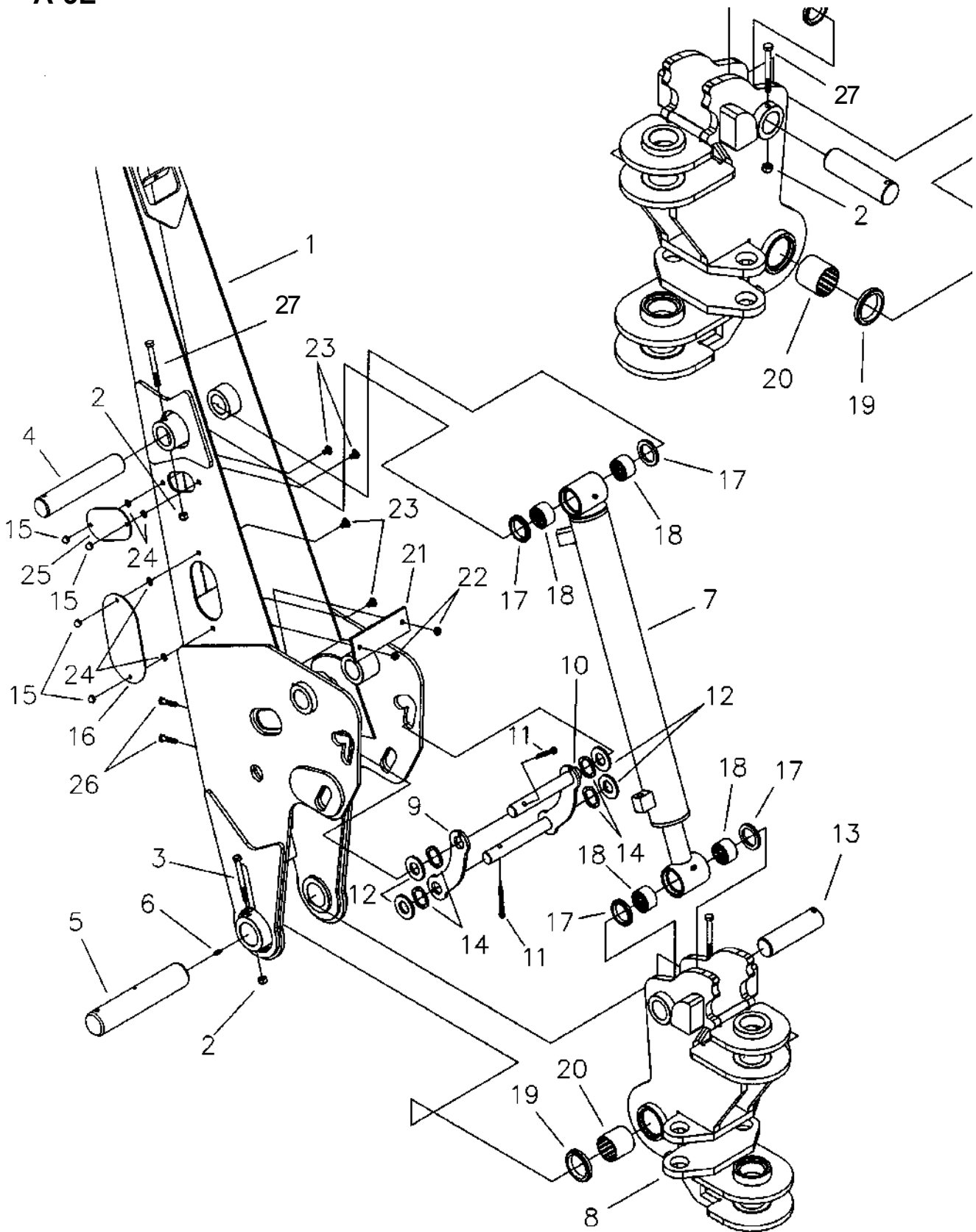
| NO | REQ'D | PART NO | DESCRIPTION |
|----|-------|---------|---------------------------------------|
| 1 | 1 | 923165 | BACKHOE DIPPER, 8-1/2' |
| 2 | 2 | 046137 | 3/8-16 NC x 3" GRADE 5 BOLT |
| 3 | 1 | 046138 | 3/8-16 NC x 3-1/2" GRADE 5 BOLT |
| 4 | 3 | 044080 | 3/8-16 NC TOP LOCK NUT |
| 5 | 1 | 923146 | BOOM CYLINDER BASE END MOUNTING PIN |
| 6 | 1 | 401256 | STRAIGHT ZERK FITTING |
| 7 | 1 | 923584 | BACKHOE DIPPER / BOOM PIN |
| 8 | 1 | 923093 | BACKHOE BOOM, 8-1/2' |
| 9 | 1 | 923150 | DIPPER CYLINDER BASE END MOUNTING PIN |
| 10 | 1 | 923241P | DIPPER CYLINDER, 8-1/2' BACKHOE |
| 11 | 4 | 923044 | GARLOCK BEARING |
| 12 | 4 | 923041 | BEARING SEAL |
| 13 | 4 | 923047 | GARLOCK BEARING |
| 14 | 4 | 923042 | BEARING SEAL |
| NS | | 923577 | SEAL KIT FOR 923158 |
| NS | | 100267 | SEAL KIT FOR 923241P |

LEGEND: NS = Not Shown

** = Purchase locally

SWING POST AND 10 FT. BOOM ASSEMBLY

A-3E



SWING POST AND 10 FT. BOOM ASSEMBLY PARTS

A-3F

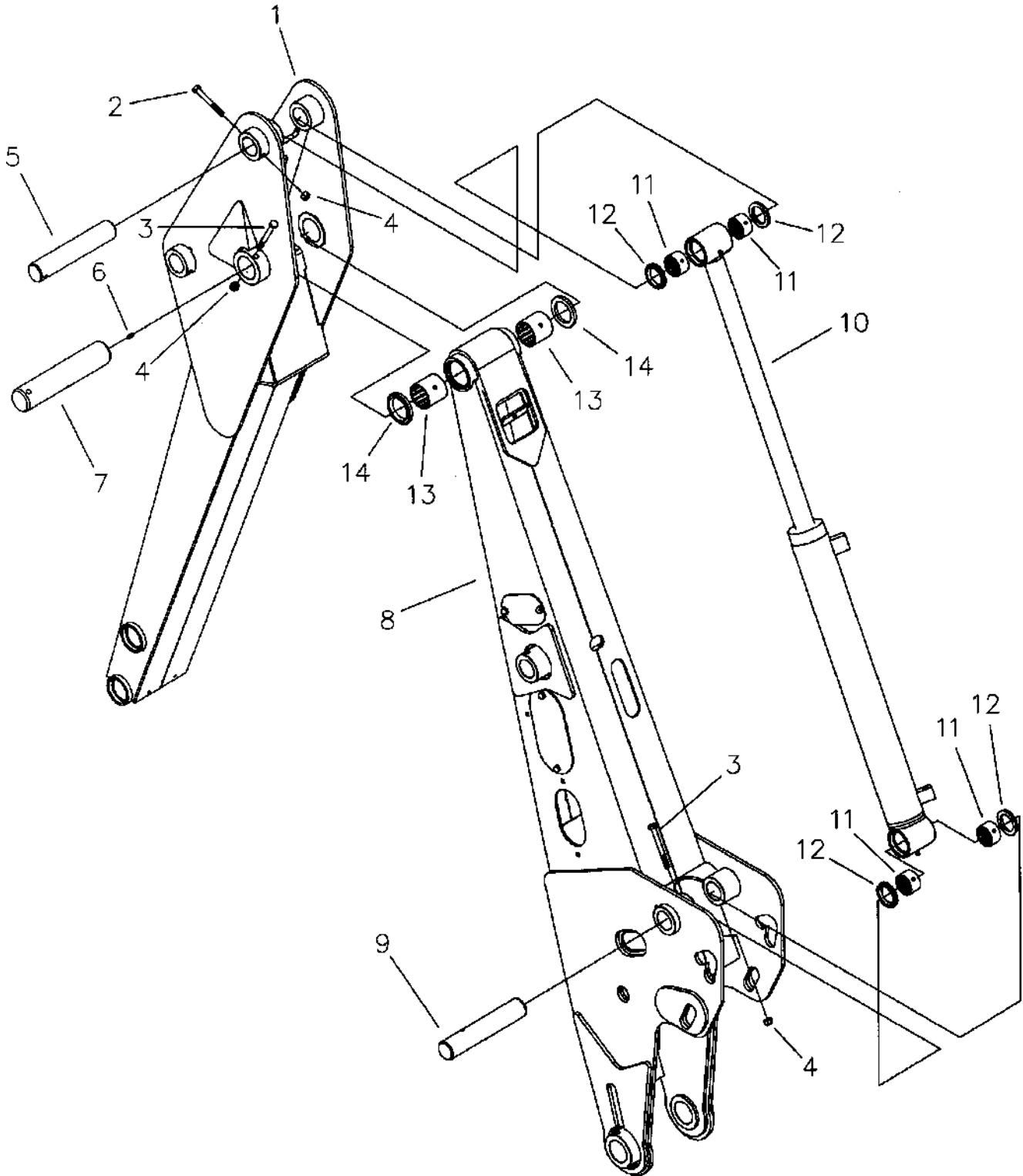
| NO | REQ'D | PART NO | DESCRIPTION |
|----|-------|---------|----------------------------------------------|
| 1 | 1 | 923395 | BACKHOE BOOM,10' |
| 2 | 3 | 044080 | 3/8-16 NC TOP LOCK NUT |
| 3 | 1 | 046138 | 3/8-16 NC x 3-1/2 GRADE 5 BOLT |
| 4 | 1 | 923146 | BOOM CYLINDER BASE END MOUNTING PIN |
| 5 | 1 | 923153 | BACKHOE BOOM / SWING POST PIN |
| 6 | 1 | 401256 | STRAIGHT ZERK FITTING |
| 7 | 1 | 923300 | BOOM CYLINDER, 10' BACKHOE |
| 8 | 1 | 923084 | SWING POST WELDMENT |
| 9 | 1 | 923117 | BOOM LOCK LINKAGE ARM |
| 10 | 1 | 923116 | BOOM LOCK LINKAGE ASSEMBLY |
| 11 | 2 | 045012 | COTTER PIN, 1/4 X 1-3/4 |
| 12 | 4 | 923059 | BOOM LOCK NYLON WASHER |
| 13 | 1 | 923149 | BOOM CYLINDER ROD END MOUNTING PIN |
| 14 | 4 | 923224 | WAVY WASHER, 1-3/4 O.D. x 1" I.D. x .025 THK |
| 15 | 4 | 044027 | 5/16-18 ACORN NUT |
| 16 | 1 | 923349 | LARGE COVER |
| 17 | 4 | 923041 | BEARING SEAL |
| 18 | 4 | 923044 | GARLOCK BEARING |
| 19 | 2 | 923042 | BEARING SEAL |
| 20 | 2 | 923047 | GARLOCK BEARING |
| 21 | 1 | 923219 | BOOM HOSE PLATE |
| 22 | 2 | 044033 | 5/16-18 NC NYLON INSERT NUT |
| 23 | 4 | 053029 | 5/16-18 NC X X1/2 CARRIAGE BOLT |
| 24 | 4 | 045217 | 5/16-18 NC PUSHNUT BOLT RETAINER |
| 25 | 1 | 923350 | SMALL COVER |
| 26 | 2 | 046060 | 5/16-18 NC X 1-1/2 GRADE 5 BOLT |
| 27 | 2 | 046137 | 3/8-16 X 3" GRADE 5 BOLT |
| NS | | 923580 | SEAL KIT FOR 923300 |

LEGEND: NS = Not Shown

** = Purchase locally

10 FT. BOOM AND DIPPER ASSEMBLY

A-3G



10 FT. BOOM AND DIPPER ASSEMBLY PARTS

A-3H

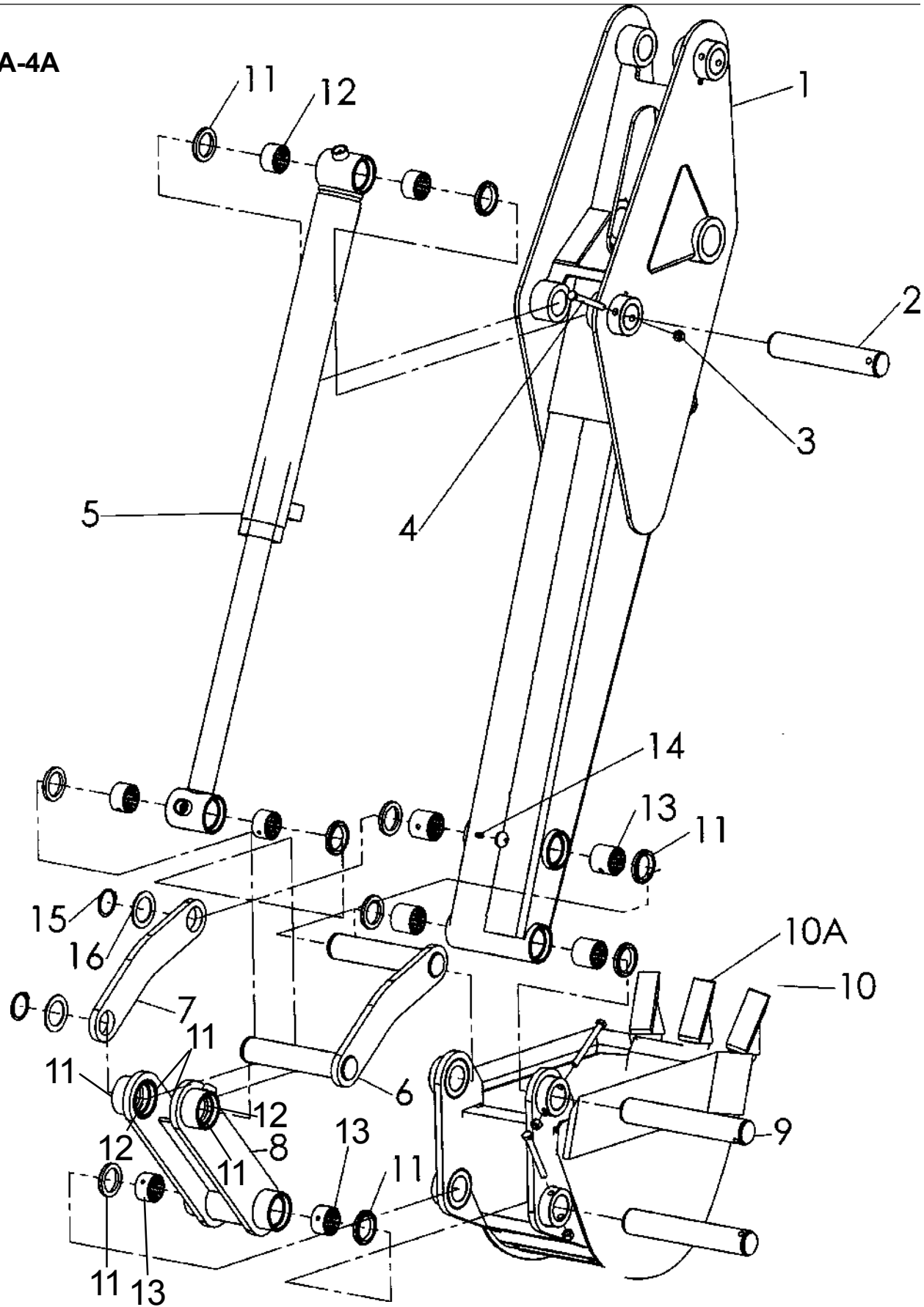
| NO | REQ'D | PART NO | DESCRIPTION |
|----|-------|---------|---------------------------------------|
| 1 | 1 | 923403 | BACKHOE DIPPER, 10' |
| 2 | 2 | 046137 | 3/8-16 NC x 3" GRADE 5 BOLT |
| 3 | 1 | 046138 | 3/8-16 NC x 3-1/2" GRADE 5 BOLT |
| 4 | 3 | 044080 | 3/8-16 NC TOP LOCK NUT |
| 5 | 1 | 923584 | BOOM CYLINDER BASE END MOUNTING PIN |
| 6 | 1 | 401256 | STRAIGHT ZERK FITTING |
| 7 | 1 | 923154 | BACKHOE DIPPER / BOOM PIN |
| 8 | 1 | 923395 | BACKHOE BOOM, 10' |
| 9 | 1 | 923150 | DIPPER CYLINDER BASE END MOUNTING PIN |
| 10 | 1 | 923220 | DIPPER CYLINDER, 10' BACKHOE |
| 11 | 4 | 923044 | GARLOCK BEARING |
| 12 | 4 | 923041 | BEARING SEAL |
| 13 | 4 | 923047 | GARLOCK BEARING |
| 14 | 4 | 923042 | BEARING SEAL |
| NS | | 923575 | SEAL KIT FOR 923220 |

LEGEND: NS = Not Shown

** = Purchase locally

8 1/2 FT. DIPPER AND BUCKET ASSEMBLY

A-4A



8 1/2 FT. DIPPER AND BUCKET ASSEMBLY PARTS

A-4B

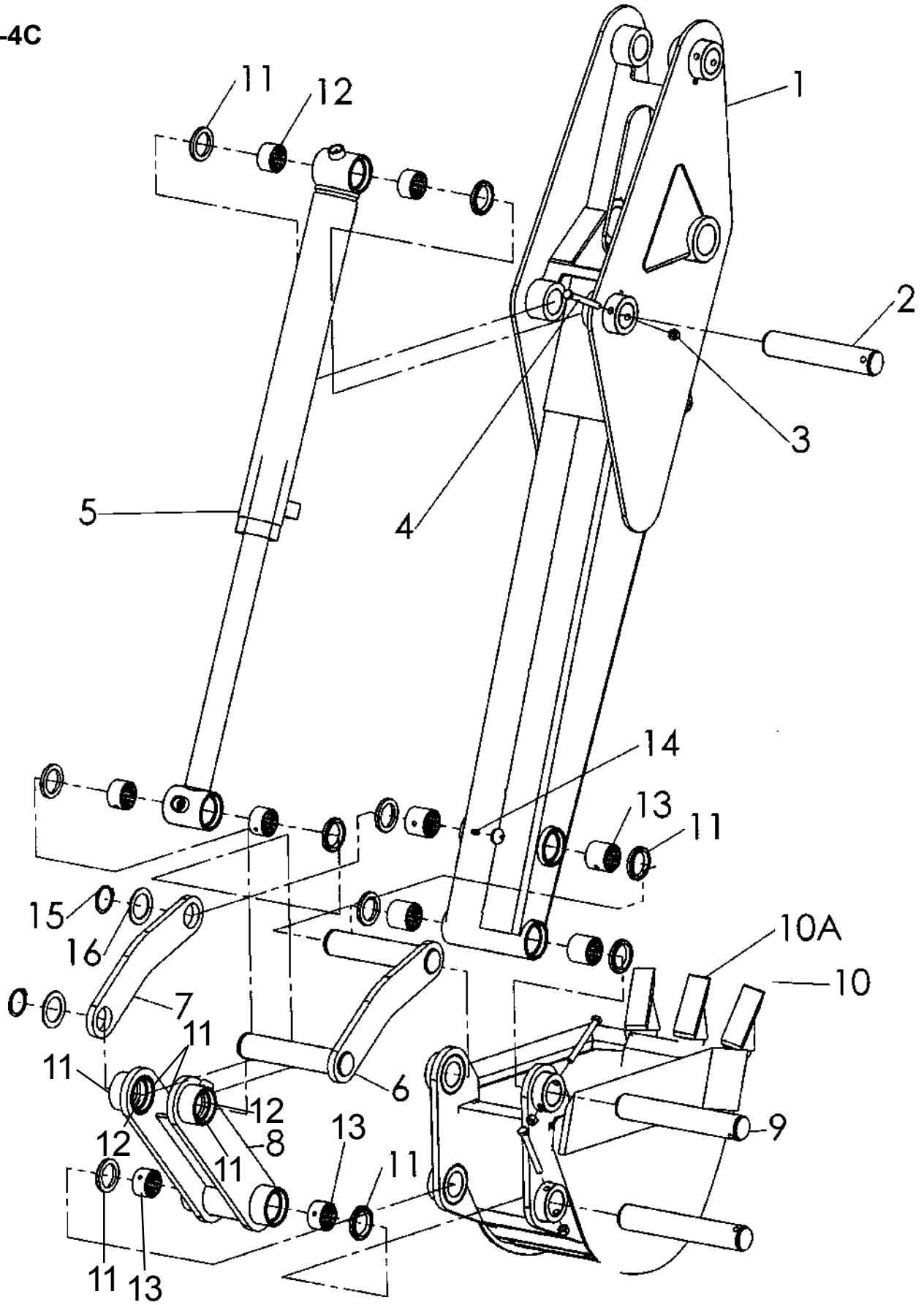
| NO | REQ'D | PART NO | DESCRIPTION |
|-----|-------|---------|-------------------------------------|
| 1 | 1 | 923165 | BACKHOE DIPPER, 8-1/2' |
| 2 | 1 | 923584 | BOOM CYLINDER BASE END MOUNTING PIN |
| 3 | 3 | 044080 | 3/8-16 NC TOP LOCK NUT |
| 4 | 3 | 046137 | 3/8-16 NC x 3" GRADE 5 BOLT |
| 5 | 1 | 923244P | BUCKET CYLINDER, 8-1/2' BACKHOE |
| 6 | 1 | 923164 | TOGGLE ARM |
| 7 | 1 | 923181 | TOGGLE ARM PLATE |
| 8 | 1 | 923161 | BUCKET LINK ASSEMBLY |
| 9 | 2 | 923151 | BUCKET MOUNTING PIN |
| 10 | 1 | 923172 | 16" BUCKET ASSEMBLY |
| | NS | 923215 | 10" BUCKET ASSEMBLY |
| | NS | 923365 | 12" BUCKET ASSEMBLY |
| | NS | 923370 | 18" BUCKET ASSEMBLY |
| | NS | 923380 | 24" BUCKET ASSEMBLY |
| | NS | 923386 | 36" BUCKET ASSEMBLY |
| 10A | | 930286 | BUCKET TOOTH |
| | NS | 923190 | TOOTH SHANK |
| | NS | 923185 | TOOTH AND SHANK |
| 11 | 14 | 923041 | BEARING SEAL |
| 12 | 6 | 923044 | GARLOCK BEARING |
| 13 | 6 | 923045 | GARLOCK BEARING |
| 14 | 1 | 401256 | STRAIGHT ZERK FITTING |
| 14 | 1 | 401256 | STRAIGHT ZERK FITTING |
| 15 | 2 | 923206 | SNAP RING, 1-5/8" |
| 16 | 2 | 923207 | MACHINE BUSHING 1-5/8 X 14 GA. |
| NS | | 923576 | SEAL KIT FOR 923156 |
| NS | | 100269 | SEAL KIT FOR 923244P |

LEGEND: NS = Not Shown

** = Purchase locally

10 FT. DIPPER AND BUCKET ASSEMBLY

A-4C



10 FT. DIPPER AND BUCKET ASSEMBLY PARTS

A-4D

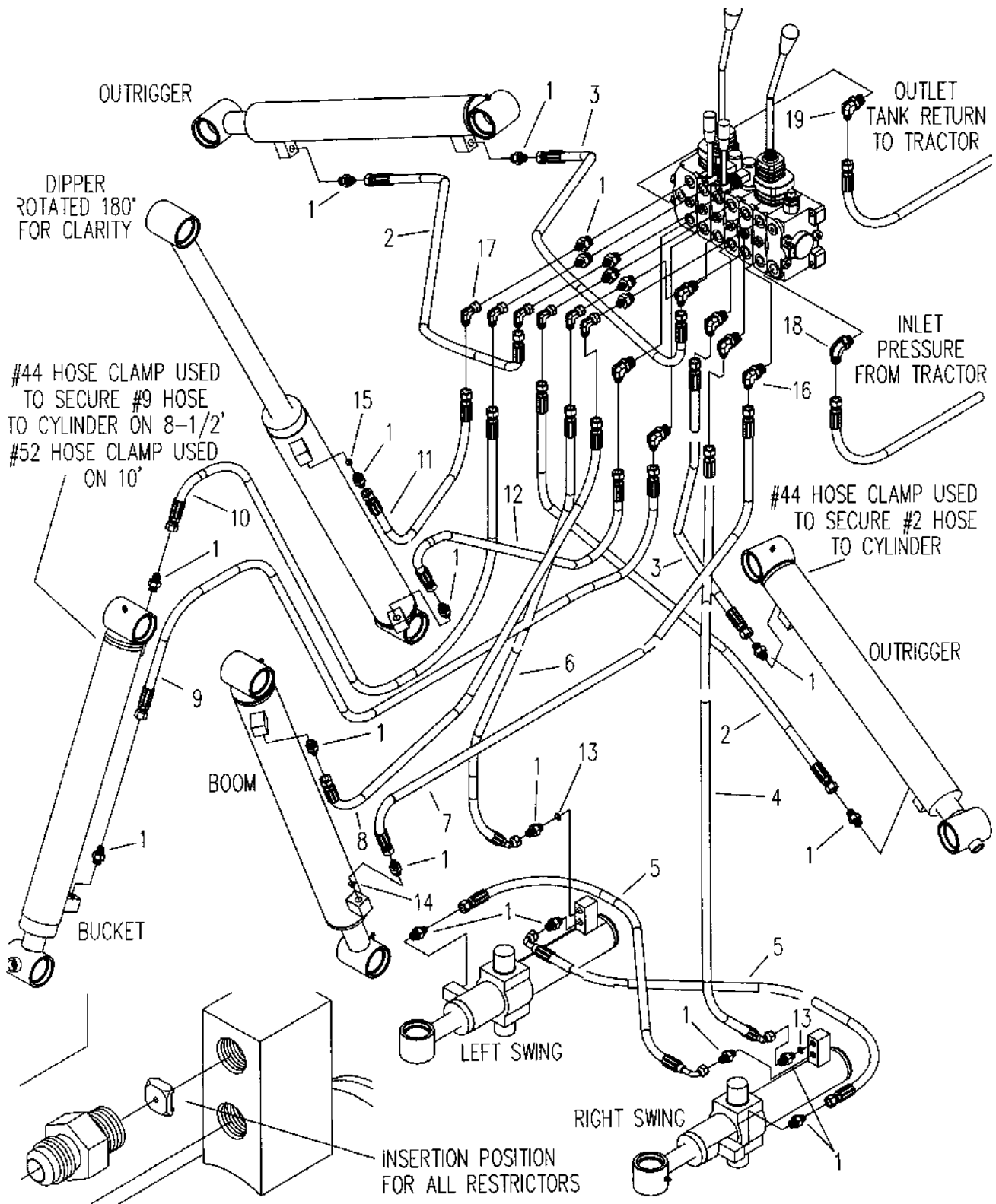
| NO | REQ'D | PART NO | DESCRIPTION |
|-----|-------|---------|-------------------------------------|
| 1 | 1 | 923403 | BACKHOE DIPPER, 10' |
| 2 | 1 | 923584 | BOOM CYLINDER BASE END MOUNTING PIN |
| 3 | 3 | 044080 | 3/8-16 NC TOP LOCK NUT |
| 4 | 3 | 046137 | 3/8-16 NC x 3" GRADE 5 BOLT |
| 5 | 1 | 923221 | BUCKET CYLINDER, 10' BACKHOE |
| 6 | 1 | 923164 | TOGGLE ARM |
| 7 | 1 | 923181 | TOGGLE ARM PLATE |
| 8 | 1 | 923161 | BUCKET LINK ASSEMBLY |
| 9 | 2 | 923151 | BUCKET MOUNTING PIN |
| 10 | 1 | 923360 | 16" BUCKET ASSEMBLY |
| | NS | 923366 | 10" BUCKET ASSEMBLY |
| | NS | 923368 | 12" BUCKET ASSEMBLY |
| | NS | 923374 | 18" BUCKET ASSEMBLY |
| | NS | 923376 | 20" BUCKET ASSEMBLY |
| | NS | 923384 | 24" BUCKET ASSEMBLY |
| | NS | 923391 | 36" BUCKET ASSEMBLY |
| 10A | | 930286 | BUCKET TOOTH |
| | NS | 923190 | TOOTH SHANK |
| | NS | 923185 | TOOTH AND SHANK |
| 11 | 14 | 923041 | BEARING SEAL |
| 12 | 6 | 923044 | GARLOCK BEARING |
| 13 | 6 | 923045 | GARLOCK BEARING |
| 14 | 1 | 401256 | STRAIGHT ZERK FITTING |
| 15 | 2 | 923207 | MACHINE BUSHING 1-5/8 X 14 GA. |
| 16 | 2 | 923206 | SNAP RING, 1-5/8" |
| NS | | 923574 | SEAL KIT FOR 923221 |

LEGEND: NS = Not Shown

** = Purchase locally

8 1/2 FT. HYDRAULIC HOSE ASSEMBLIES

A-5A



8 1/2 FT. HYDRAULIC HOSE ASSEMBLIES PARTS

A-5B

| NO | REQ'D | PART NO | DESCRIPTION |
|----|-------|---------|------------------------------------------------|
| 1 | 22 | 320076 | HYDRAULIC FITTING 8M3K-8FJX-8FJX-92" |
| 2 | 2 | 923052 | 3/8 HOSE ASSEMBLY 3000 PSI 6FJX-6FJX-50" |
| 3 | 2 | 923051 | 3/8 HOSE ASSEMBLY 3000 PSI 6FJX-6FJX-28.5" |
| 4 | 1 | 923049 | 3/8 HOSE ASSEMBLY 3000 PSI 6FJX-6FJX45S-27" |
| 5 | 2 | 923048 | 1/4 HOSE ASSEMBLY 3000 PSI 6FJX-6FJX90S-23" |
| 6 | 1 | 923050 | 3/8 HOSE ASSEMBLY 3000 PSI 6FJX-6FJX45S-25" |
| 7 | 1 | 923054 | 3/8 HOSE ASSEMBLY 3000 PSI 6FJX-6FJX-76" |
| 8 | 1 | 923053 | 3/8 HOSE ASSEMBLY 3000 PSI 6FJX-6FJX-72" |
| 9 | 1 | 923058 | 3/8 HOSE ASSEMBLY 3000 PSI 6FJX-6FJX-129" |
| 10 | 1 | 923057 | 3/8 HOSE ASSEMBLY 3000 PSI 6FJX-6FJX-111" |
| 11 | 1 | 923055 | 3/8 HOSE ASSEMBLY 3000 PSI 6FJX-6FJX-83" |
| 12 | 1 | 923056 | 3/8 HOSE ASSEMBLY 3000 PSI 6FJX-6FJX-81" |
| 13 | 2 | 930292 | RESTRICTOR, .070 DIA. |
| 14 | 1 | 923210 | RESTRICTOR, .094 DIA. |
| 15 | 1 | 923209 | RESTRICTOR, .105 DIA. |
| 16 | 6 | 920692 | HYDRAULIC FITTING |
| 17 | 6 | 921226 | HYDRAULIC FITTING |
| 18 | 1 | 320070 | HYDRAULIC FITTING |
| 19 | 1 | 921220 | HYDRAULIC FITTING |
| 20 | 1 | 045031 | HOSE CLAMP - SIZE 44 |
| 21 | 1 | 045029 | HOSE CLAMP - SIZE 52 |

LEGEND: NS = Not Shown

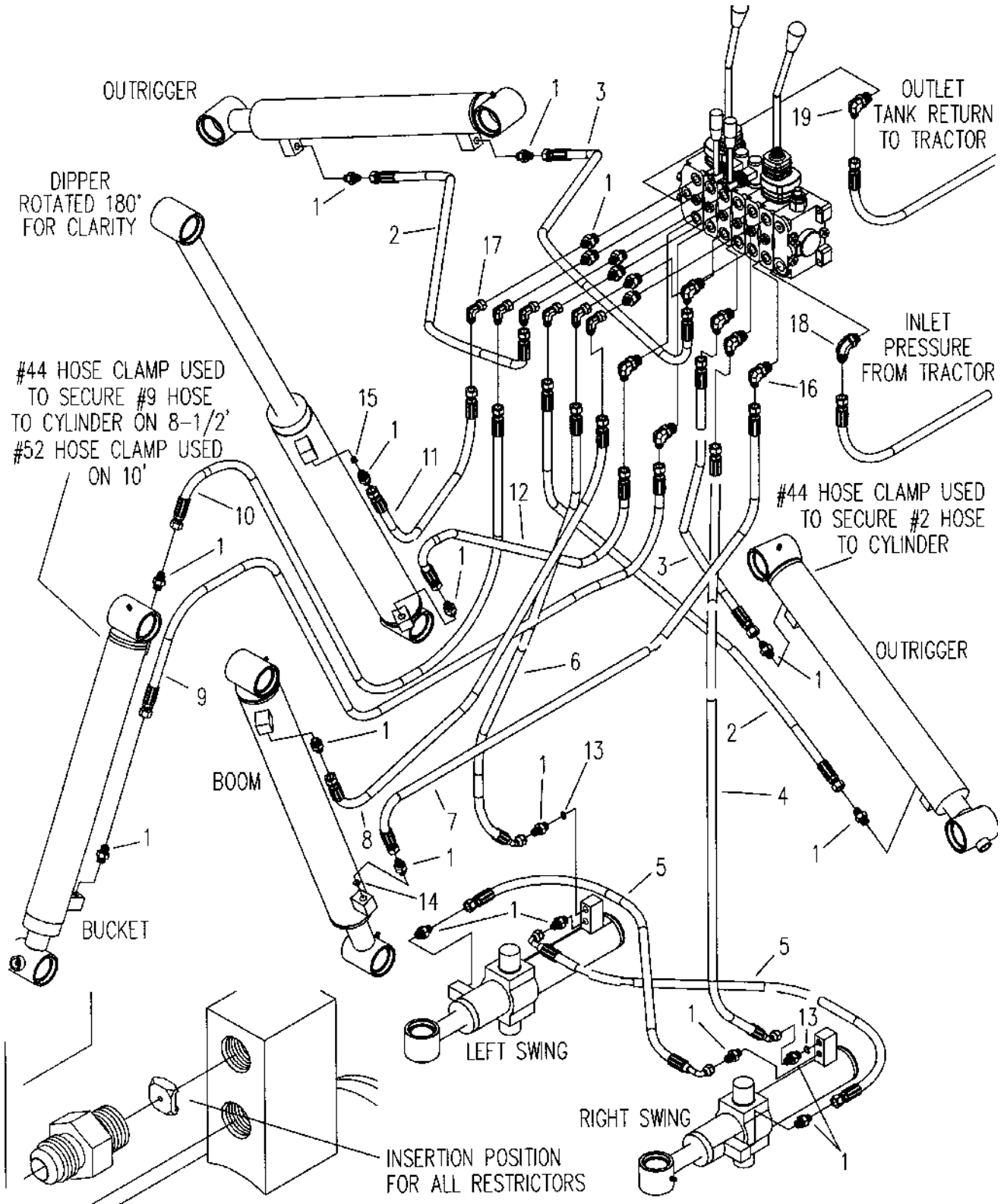
** = Purchase locally

10 FT. HYDRAULIC HOSE ASSEMBLIES

923050

3/8 HOSE ASS
6FJX-6FJX45S-

A-5C



10 FT. HYDRAULIC HOSE ASSEMBLIES PARTS

SEMBLY 3000 PSI
25"

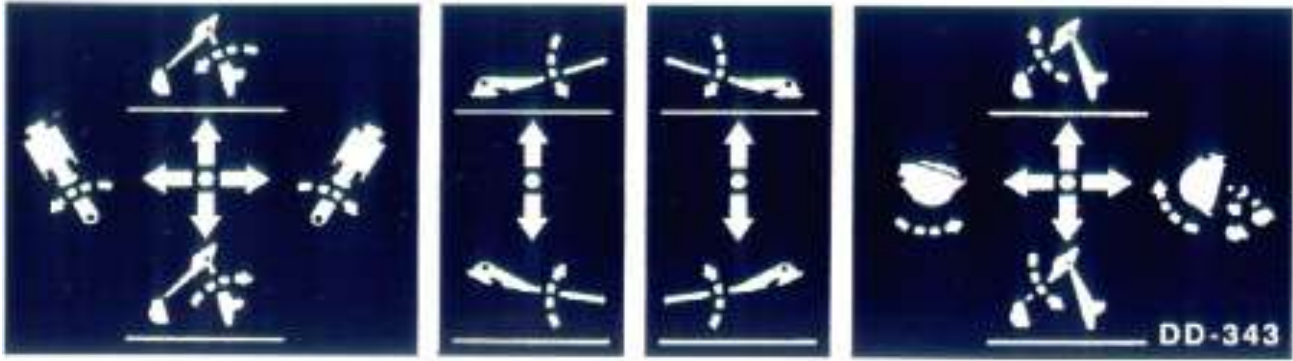
A-5D

| NO | REQ'D | PART NO | DESCRIPTION |
|----|-------|---------|------------------------------------------------|
| 1 | 22 | 320076 | HYDRAULIC FITTING 8M3K-8FJX-8FJX-92" |
| 2 | 2 | 923052 | 3/8 HOSE ASSEMBLY 3000 PSI 6FJX-6FJX-50" |
| 3 | 2 | 923051 | 3/8 HOSE ASSEMBLY 3000 PSI 6FJX-6FJX-28.5" |
| 4 | 1 | 923049 | 3/8 HOSE ASSEMBLY 3000 PSI 6FJX-6FJX45S-27" |
| 5 | 2 | 923048 | 1/4 HOSE ASSEMBLY 3000 PSI 6FJX-6FJX90S-23" |
| 6 | 1 | 923050 | 3/8 HOSE ASSEMBLY 3000 PSI 6FJX-6FJX45S-25" |
| 7 | 1 | 923342 | 3/8 HOSE ASSEMBLY 3000 PSI 6FJX-6FJX-78" |
| 8 | 1 | 923341 | 3/8 HOSE ASSEMBLY 3000 PSI 6FJX-6FJX-74" |
| 9 | 1 | 923346 | 3/8 HOSE ASSEMBLY 3000 PSI 6FJX-6FJX-144" |
| 10 | 1 | 923345 | 3/8 HOSE ASSEMBLY 3000 PSI 6FJX-6FJX-120" |
| 11 | 1 | 923343 | 3/8 HOSE ASSEMBLY 3000 PSI 6FJX-6FJX-97" |
| 12 | 1 | 923344 | 3/8 HOSE ASSEMBLY 3000 PSI 6FJX-6FJX-90" |
| 13 | 2 | 930292 | RESTRICTOR, .070 DIA. |
| 14 | 1 | 923210 | RESTRICTOR, .094 DIA. |
| 15 | 1 | 923209 | RESTRICTOR, .105 DIA. |
| 16 | 6 | 920692 | HYDRAULIC FITTING |
| 17 | 6 | 921226 | HYDRAULIC FITTING |
| 18 | 1 | 320070 | HYDRAULIC FITTING |
| 19 | 1 | 921220 | HYDRAULIC FITTING |
| 20 | 1 | 045031 | HOSE CLAMP - SIZE 44 |
| 21 | 1 | 045029 | HOSE CLAMP - SIZE 52 |

LEGEND: NS = Not Shown

** = Purchase locally

SAFETY AND OPERATION DECALS



090343
OPERATING CONTROLS DECAL

090342
PINCHING HAZARD DECAL

090339
BODILY INJURY WARNING DECAL

090340
CRUSHING HAZARD DECAL



090191
HIGH PRESSURE FLUID HAZARD

090269
ALLMAND CORPORATE LOGO DECAL 12"

SAFETY AND OPERATION DECALS

090147
NO STEP DECAL

090338
BUCKET/STABILIZER CONTACT DECAL

090210
OPERATIONAL WARNING DECAL



090370
CALL BEFORE YOU DIG

090341
BOOM LOCK LOCATION DECAL

LIMITED WARRANTY

ALLMAND TLB LIMITED WARRANTY UNITED STATES and U.S. TERRITORIES

THIS WARRANTY IS IN LIEU OF ALL OTHER WARRANTIES, EXPRESSED OR IMPLIED INCLUDING WARRANTIES OF MERCHANTABILITY OR OF FITNESS FOR PURPOSE, AND ANY EXCEPTIONS ARE DESCRIBED IN THE PUBLISHED LIMITED WARRANTY ADDENDUM, AVAILABLE UPON REQUEST.

COMPONENTS, SUB-ASSEMBLIES AND DEVICES MANUFACTURED BY OTHER MANUFACTURERS ARE NOT COVERED BY THIS WARRANTY. ALL WARRANTY INFORMATION FROM SUCH OTHER MANUFACTURERS IS PROVIDED WITHIN OR ACCOMPANY THESE GOODS.

Subject to the foregoing, the manufacturer, Allmand Bros. Inc., hereby warrants all tractor-loader-backhoes manufactured by Allmand Bros. Inc. after June 1, 2001 to be free from defects in material and workmanship for a period of (2) years after delivery to the original purchaser. The first year warranty would include parts and labor. The second year warranty would be limited to parts manufactured by Allmand Bros. Inc. and components warranted by the original equipment manufacturer for more than 12 months. Additionally, Allmand Bros. Inc., hereby warrants all replacement parts supplied by Allmand Bros. Inc. to be free from defects in material and workmanship for a period of 90 days after date of invoice. Delivery shall be deemed for the purposes of this warranty to have occurred no later than five days following the date of sale agreement or invoice unless the purchase agreement or invoice specifically states a later delivery date in which case such delivery date shall control. The original purchaser shall be deemed to be a person who places the goods or products in actual use, and any person holding such goods solely for wholesale or retail sale purposes shall not constitute an original purchaser. PROVIDED, any leasing of these goods or other use beyond normal demonstration of same shall be deemed to be in use by an original purchaser and all warranty periods shall commence at the time of such use. During the warranty period any defective goods or parts hereof shall be repaired or replaced at manufacturer's discretion. In the event it is necessary to return such goods or parts to the factory, all transportation charges shall be prepaid. The manufacturer shall in no event pay mileage expenses, but will warrant outbound ground freight.

The obligations of the manufacturer is solely to repair or replace defective goods or parts or to refund the cost of the same if it is determined by the manufacturer that repair or replacement will not return the goods to proper working order or utility. **THE REMEDIES SET FORTH HEREIN ARE EXCLUSIVE AND MANUFACTURER SHALL NOT BE LIABLE FOR SPECIAL, INDIRECT, OR CONSEQUENTIAL DAMAGES. THE OBLIGATIONS OF THE MANUFACTURER HEREUNDER SHALL IN NO WAY EXCEED THE PRICE OF THE EQUIPMENT OR PART UPON WHICH SUCH LIABILITY IS BASED.**

The warranty shall not extend to tires, lamps, batteries, or parts that have been altered, changed, damaged, or improperly installed, repaired, operated or maintained. Provided, this exclusion shall not apply to installations, repairs or other work done at the manufacturer's plant or under direct manufacturer's supervision. The Operator's Manual, to the extent covered therein, is deemed to set forth the proper procedures for operation, repair, installation, and maintenance of these goods.

No representative, dealer or distributor of the company is authorized to make any changes or exceptions to this warranty unless expressly authorized in writing from the manufacturer. All warranty claims must be filed within forty-five (45) days of the failure.

