



# BULL SKID AV490

## SPARE PARTS BOOK







<b>S.NO</b>	<b>DESCRIPTION</b>	<b>PG.No.</b>
<b>A</b>	<b>FULL ASSEMBLY COMPONENTS</b>	<b>A1-A6</b>
<b>B</b>	<b>MAIN FRAME FULL ASSEMBLY</b>	<b>B1-B6</b>
<b>C</b>	<b>ENGINE AND HYDRAULIC PUMP ASSEMBLY</b>	<b>C1-C33</b>
1	ENGINE ASSEMBLY	C1
2	ENGINE WITH FAN ASSEMBLY	C5
3	AIR FILTER	C7
4	RADIATOR ASSEMBLY	C9
5	MUFFLER ASSEMBLY	C11
6	HYDRAULIC PUMP ASSEMBLY	C13
7	HYDRAULIC PUMP FULL ASSEMBLY	C16
8	HYDRAULIC REAR PUMP ASSEMBLY	C18
9	HYDRAULIC FRONT PUMP ASSEMBLY	C22
10	LOADER PUMP ASSEMBLY	C26
11	DRIVE MOTOR ASSEMBLY	C28
12	DRIVE MOTOR	C30
<b>D</b>	<b>WHEEL ASSEMBLY</b>	<b>D1-D6</b>
1	TYRE & WHEEL HUB ASSEMBLY	D1
2	FRONT WHEEL HUB ASSEMBLY	D3
3	REAR WHEEL HUB ASSEMBLY	D5
<b>E</b>	<b>VALVE ASSEMBLY</b>	<b>E1-E8</b>
1	VALVE BLOCK ASSEMBLY	E1
2	VALVE BLOCK	E3
3	CONTROL VALVE ASSEMBLY	E5
4	FILTER ASSEMBLY	E7
<b>F</b>	<b>DOOR ASSEMBLY</b>	<b>F1-F4</b>
1	BACK DOOR ASSEMBLY	F1
2	TOP DOOR ASSEMBLY	F3



<b>S.NO</b>	<b>DESCRIPTION</b>	<b>P. No.</b>
<b>G</b>	<b>LOADER ARM ASSEMBLY</b>	<b>G1-G12</b>
1	ARM FULL ASSEMBLY	G1
2	ARM ASSEMBLY WITH BQRSL	G3
3	BQRSL ASSEMBLY	G5
4	CYLINDER ASSEMBLY SSL ARM	G7
5	CYLINDER ASSEMBLY LHS SSL BKT	G9
6	CYLINDER ASSEMBLY RHS SSL BKT	G11
<b>H</b>	<b>BUCKET IMPLEMENTS ASSEMBLY</b>	<b>H1-H4</b>
1	BUCKET FULL ASSEMBLY	H1
2	FORKLIFT ASSEMBLY	H4
<b>I</b>	<b>CABIN ASSEMBLY</b>	<b>I1-I16</b>
1	CABIN FULL ASSEMBLY	I1
2	SAFETY BAR ASSEMBLY CABIN	I7
3	FOOT ACCELERATOR ASSEMBLY	I9
4	HAND ACCELERATOR	I11
5	BATTERY CUTOFF SWITCH ASSY	I13
6	TRACTION JOYSTICK ASSEMBLY	I15
7	LOADER JOYSTICK ASSEMBLY	I17
<b>J</b>	<b>ELECTRICAL ASSEMBLY</b>	<b>J1-J6</b>
1	RELAY ASSEMBLY	J1
2	HARNESS ASSEMBLY	J3
3	BATTERY MOUNTING ASSEMBLY	J5
<b>K</b>	<b>HYDRAULIC HOSE ASSEMBLY</b>	<b>K1-K2</b>
1	HYDRAULIC ASSEMBLY	K1



## FOREWORD

Dear Customer,

Thank you for purchasing **BULL SKID AV490 LOADER**. We believe that our dealer must have taken good care while delivering the machine to you. We take immense pride in informing you that your machine is manufactured with the latest technology and with good workmanship.

To obtain the best and trouble free performance from your machine, we request you to get your machine, serviced periodically as per the maintenance schedule prescribed in the Operator's manual and at the **Bull's Authorized dealerships only**.

Each component of this machine is specially designed to deliver unmatched performance, safety and comfort. But no part, no matter how strongly engineered, will last forever. So, should the need for replacement ever arise, please contact our authorized dealerships for getting the genuine spares. You are guaranteed outstanding performance with **BULL's GENUINE SPARE PARTS**.

This manual is an essential part of your machine and should remain with the machine. Please refer the spare parts manual and always specify the part number of the part required by you to avoid wrong supplies. Bull's genuine Spare Parts are available with our Authorized dealers.

**BEWARE OF SPURIOUS SPARE.** These cheap imitations lead to expensive consequences both to precious lives and machine and also frequently burden your pocket with steel maintenance bills.

Thank you once again for having supported our product and wishing you years of happy usage.

Yours sincerely,

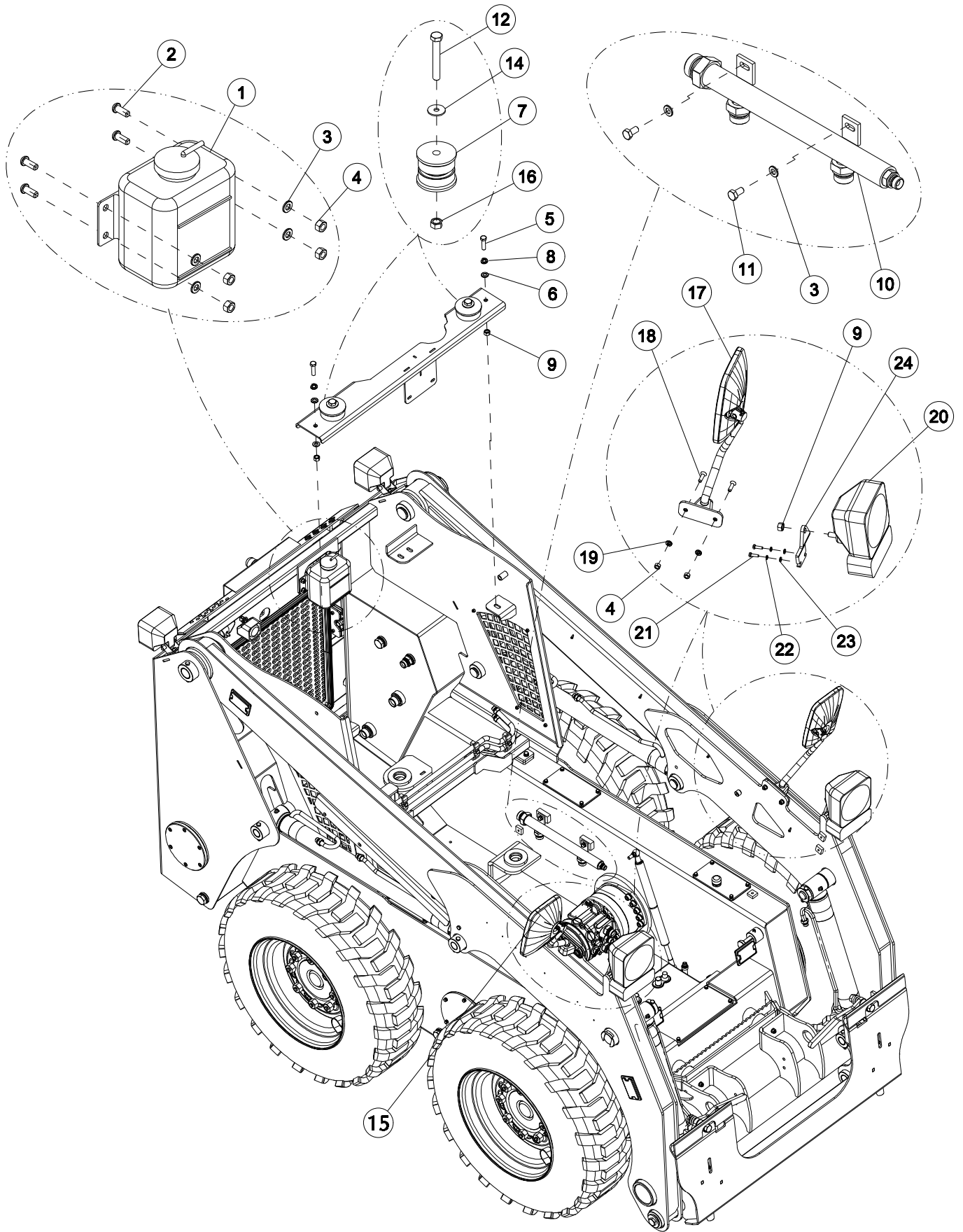
**HEAD - CUSTOMERCARE,  
BULL MACHINES PVT LTD,  
S.F. No.41,Kangeyampalayam Post,  
Trichy Road, Sulur,  
Coimbatore - 641 401.  
care@bullmachine.com**



[http://bullindiadigital.com/bull\\_service\\_request](http://bullindiadigital.com/bull_service_request)

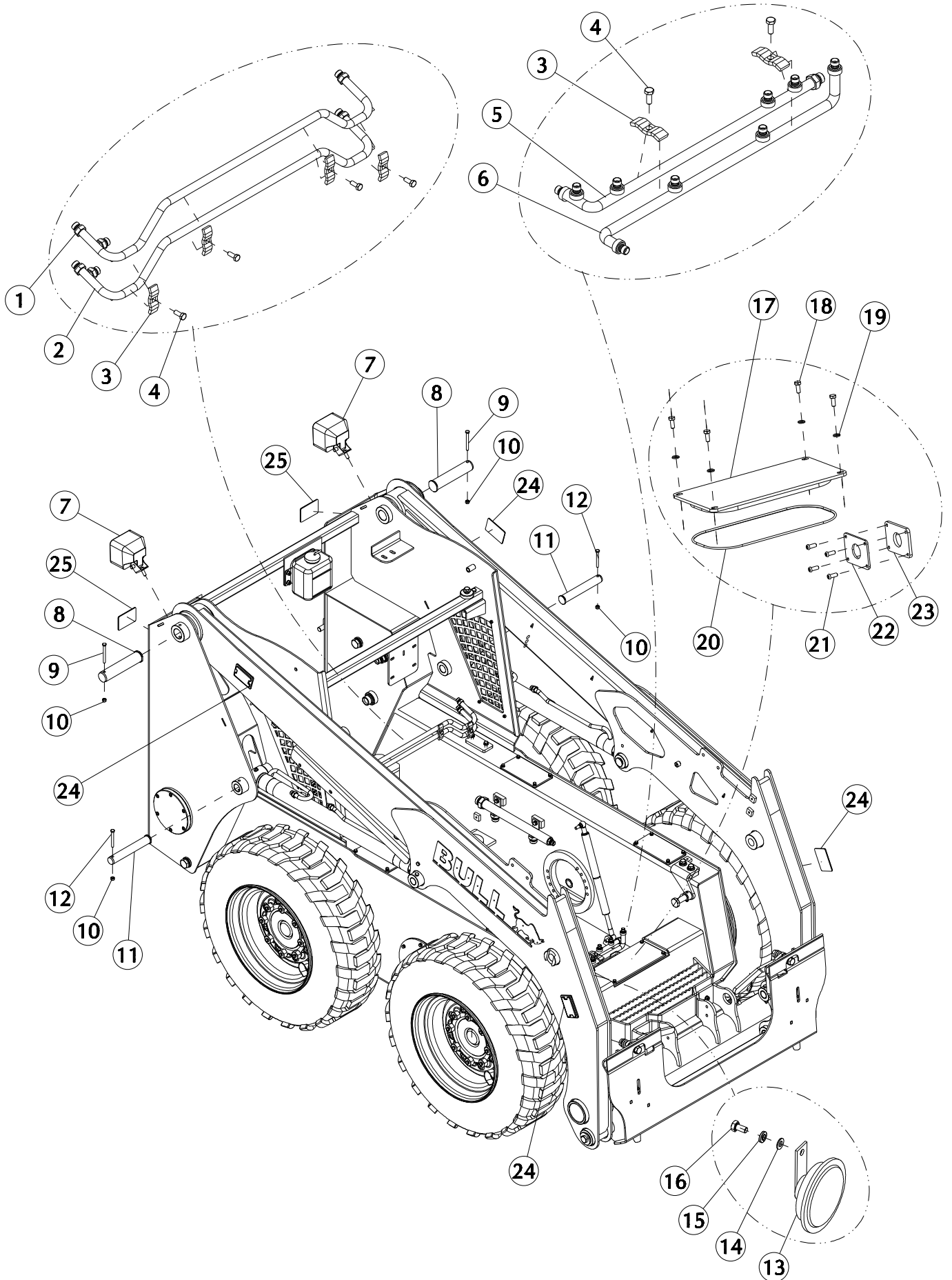


# **FULL ASSEMBLY COMPONENTS**



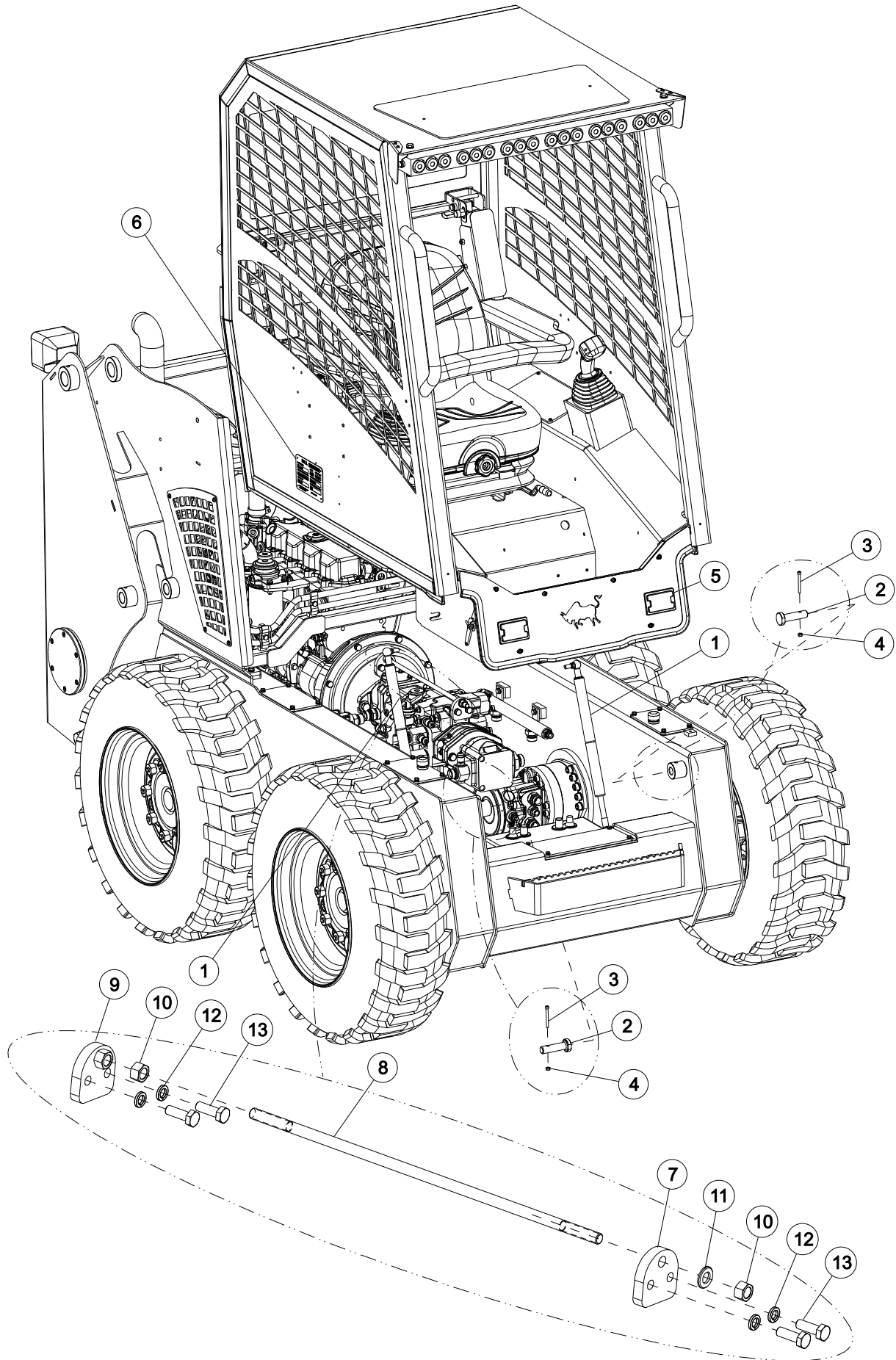


ITEM	PART NO.	REV NO.	DESCRIPTION	QTY	REMARKS
1	2002002	00	BOTTLE RECOVERY	1	
2	2003148	00	BOLT DOME M8X20	4	
3	2000352	00	WASHER PLATE M8	6	
4	2000355	00	NUT M8	8	
5	2001437	00	BOLT M12X45	2	
6	2001544	00	WASHER PLATE M12	4	
7	2007300	00	CABIN BED ASSY	2	
8	2000307	00	WASHER SPRING M12	2	
9	2000313	00	NUT M12	4	
10	7023435	00	PIPE LINE HYD ASSY 1 SSL	1	
11	2000357	00	BOLT M8X15	2	
12	2002953	00	BOLT M16X110	2	
13	7022827	00	AIRFILTER_MNG_ASSY_SSL	1	
14	2008457	00	WASHER RADIATOR	2	
15	2003863	00	MIRROR REAR VIEW SIDE RH	1	
16	2000325	00	NUT M16	2	
17	2003862	00	MIRROR REAR VIEW SIDE LH	1	
18	2003077	00	BOLT M8X30 ALLEN SCREW	4	
19	2000353	00	WASHER SPRING M8	4	
20	2000238	00	LIGHT HEAD FRONT	2	
21	2001993	00	BOLT M6X20	4	
22	2000338	00	WASHER PLATE M6	4	
23	2000340	00	WASHER SPRING M6	4	
24	7023808	00	CLAMP HEAD LIGHT SSL	2	



**FULL ASSEMBLY COMPONENTS**

ITEM	PART NO.	REV NO.	DESCRIPTION	QTY	REMARKS
1	7023433	00	PIPE ARM CYL INT CNT ASSY 1 SSL	1	
2	7023434	00	PIPE ARM CYL INT CNT ASSY 2 SSL	1	
3	7000147	02	CLAMP PIPE LINE PLT WITHOUT TAP	6	
4	2000360	00	BOLT M8X20	6	
5	7023436	00	PIPE LINE HYD ASSY 2 SSL	1	
6	7023437	00	PIPE LINE HYD ASSY 3 SSL	1	
7	2000559	00	LAMP REAR WORKING	2	
8	2008336	00	PIN COLLAR 40X194	2	
9	2000366	00	BOLT M8X80	2	
10	2000355	00	NUT NYLOCK M8	4	
11	2008337	00	PIN COLLAR 30X200	2	
12	2000365	00	BOLT M8X70	2	
13	2000265	00	HORN	1	
14	2000352	00	WASHER PLATE M8	1	
15	2000353	00	WASHER SPRING M8	1	
16	2000357	00	BOLT M8X15	1	
17	7025440	00	COVER RELAY BOX SSL	1	
18	2000344	00	BOLT M6X15	4	
19	2000338	00	WASHER PLATE M6	4	
20	2009907	00	OIL SEAL	1	
21	2000343	00	BOLT DOME M6X15	4	
22	2009008	00	GASKET RELAY SSL	1	
23	7024275	00	COVER SIDE RELAY BOX SSL	1	
24	2000419	00	REFLEX REFLECTOR AMBER	4	
25	2000420	00	REFLEX REFLECTOR RED	2	



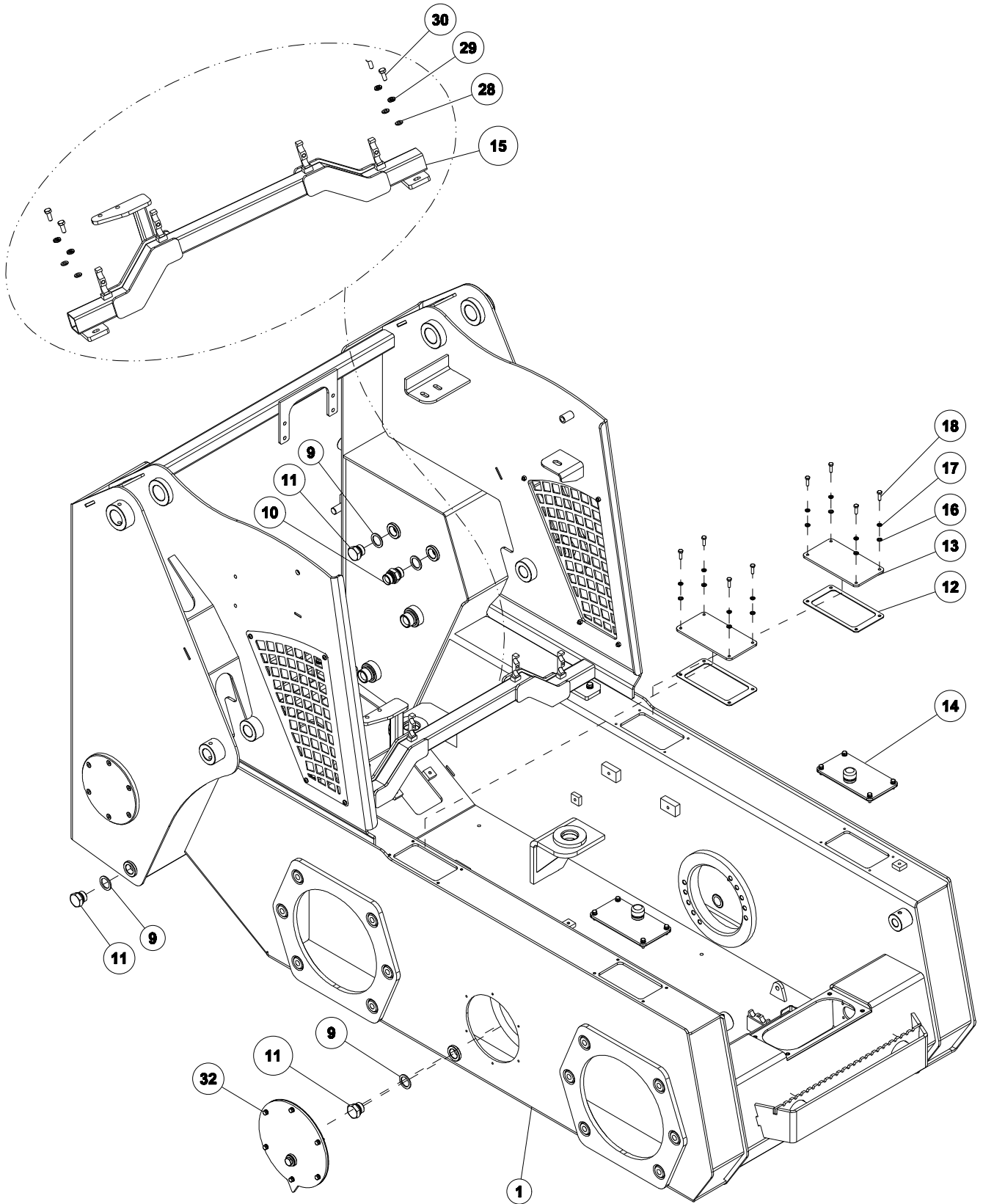


## FULL ASSEMBLY COMPONENTS

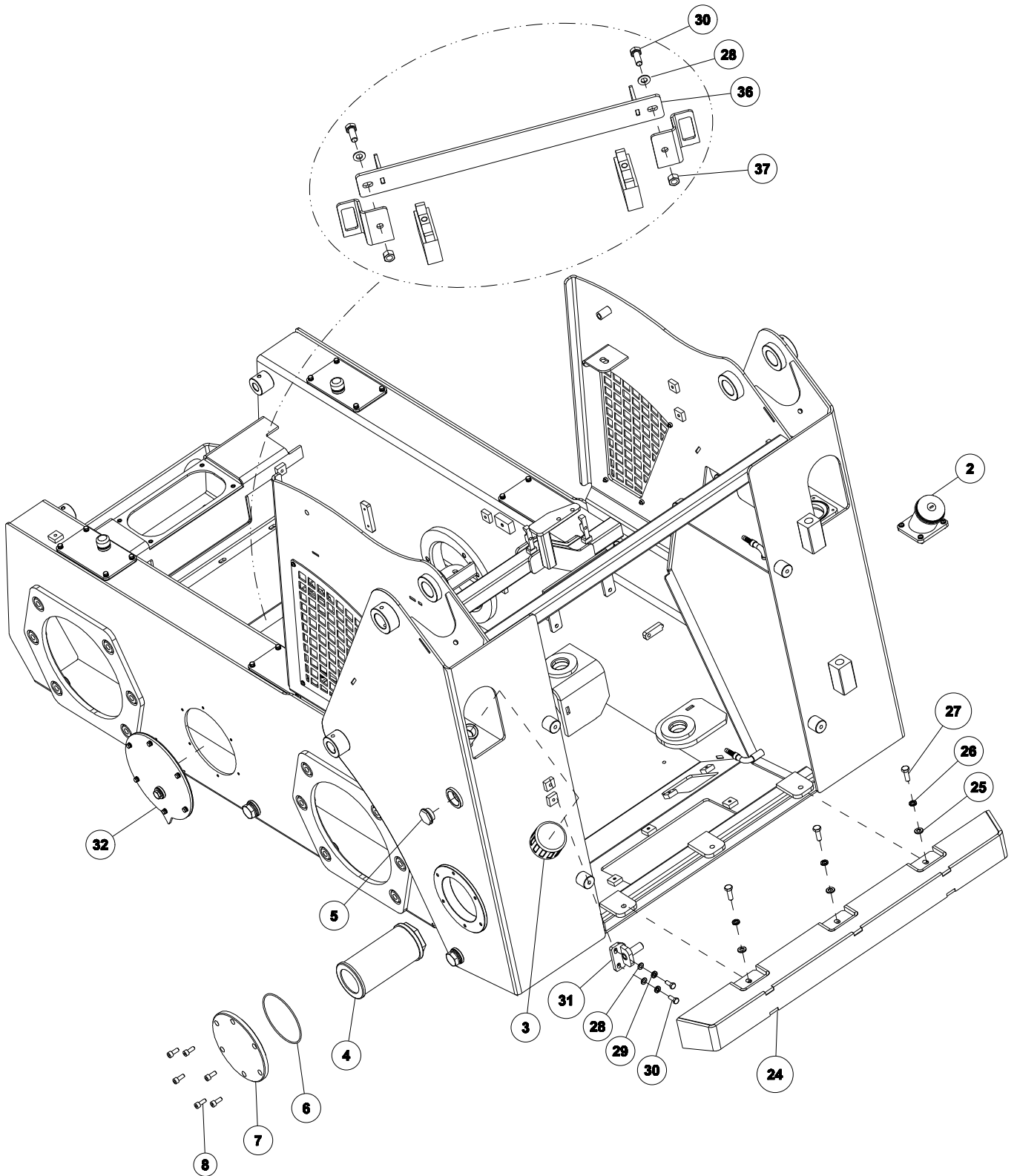
ITEM	PART NO.	REV NO.	DESCRIPTION	QTY	REMARKS
1	2007741	00	GAS SPRING CABIN SSL	2	
2	2009298	00	PIN CABIN HINGE SSL	2	
3	2000767	00	BOLT DOME M6X40	2	
4	2000392	00	NUT M6	2	
5	2000421	00	REFLEX REFLECTOR WHITE	2	
6	2009557	00	NAME PLATE SSL	1	
7	7024270	00	PLATE TANDEM PUMP SUP SSL	1	
8	7024271	00	STAY ROD TANDEM PUMP SSL	1	
9	7028255	00	PLATE STRU ASSY TANDEM PUMP SSL	1	
10	2000313	00	NUT M12	2	
11	2001544	00	WASHER PLATE M12	1	
12	2000292	00	WASHER SPRING M10	4	
13	7000249	00	BOLT HEX M10	4	

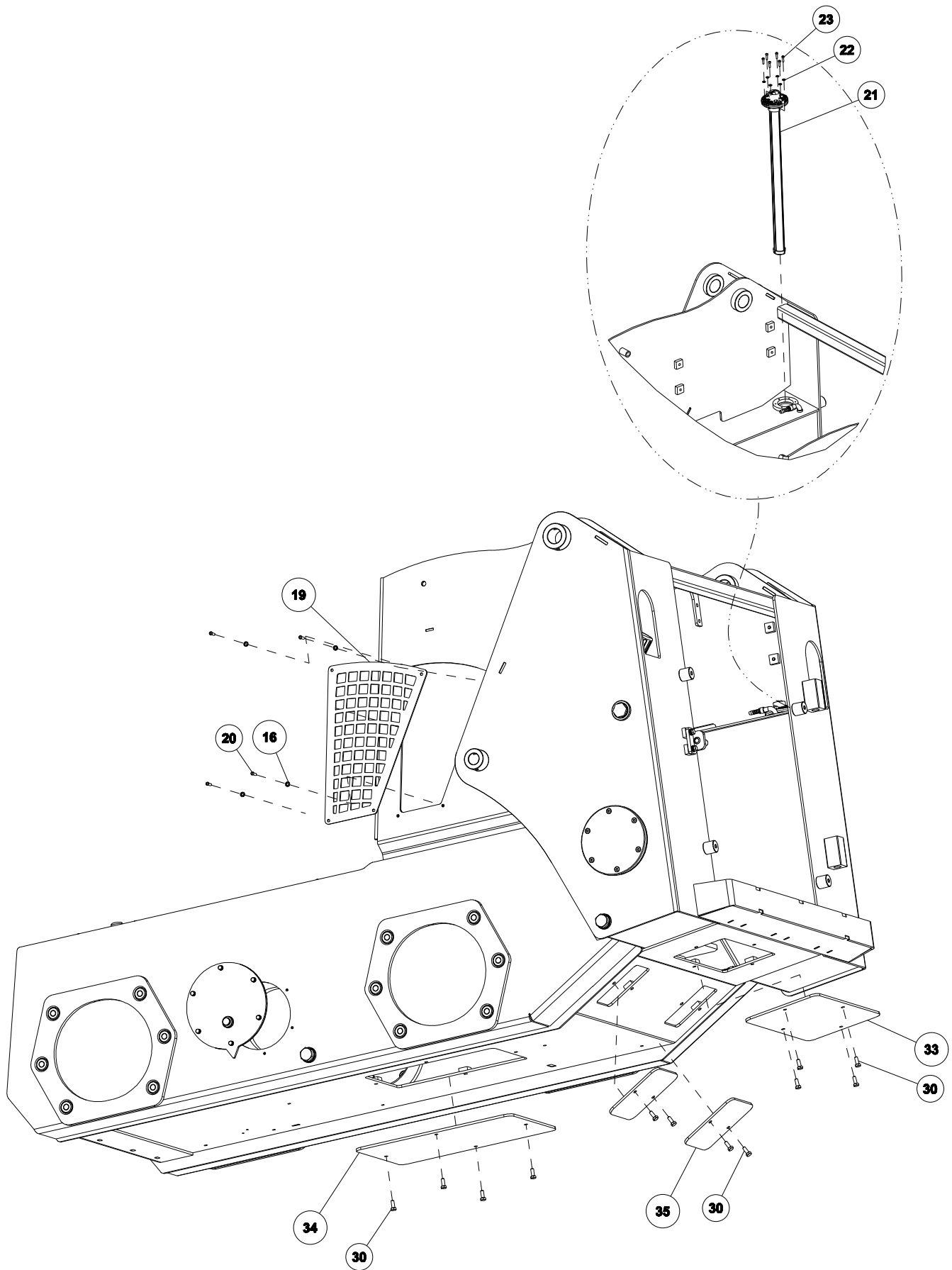


# **MAIN FRAME FULL ASSEMBLY**

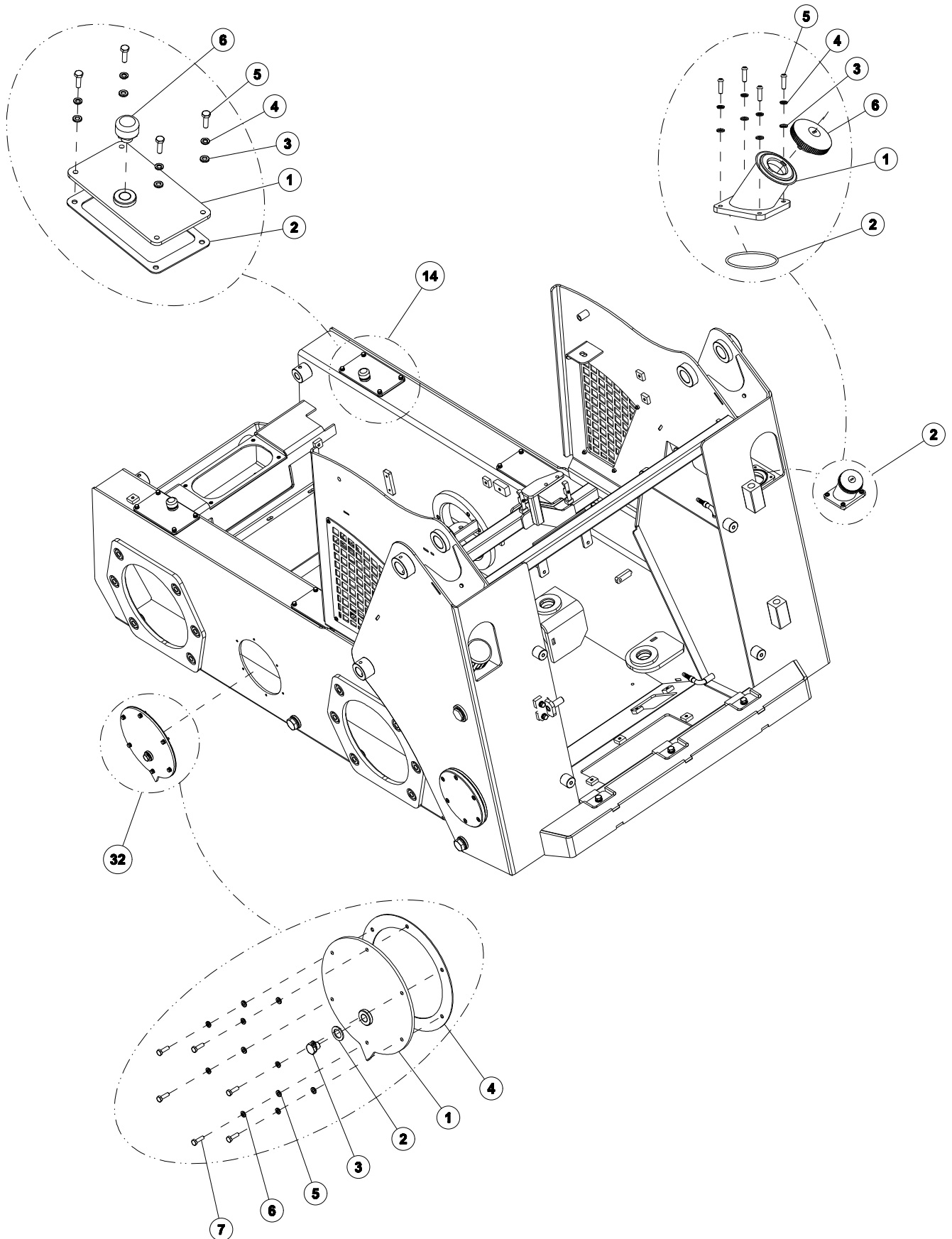








ITEM	PART NO.	REV NO.	DESCRIPTION	QTY	REMARKS
1	7022823	02	MAINFRAME STRUCTURE ASSY SSL	1	
2	7023736	00	DIESEL PIPE MOUNTING ASSY SSL	1	
3	2000142	00	METAL WITH PRESSURIZED BREATHER	1	
4	2001351	00	SUCTION STRAINER	1	
5	2000025	00	OIL LEVEL INDICATOR	1	
6	2011246	00	OIL SEAL	2	
7	2008304	01	OIL TANK FLNGCOVER SSL	2	
8	2002519	00	BOLT ALLEN M8X20	12	
9	2000073	00	WASHER BONDED	6	
10	2000080	02	HYDRAULIC TUBE FITTING CONNECTOR	1	
11	2000076	01	HYDRAULIC TUBE FITTING NIPPLE	5	
12	2008220	00	GASKET COVER SSL	2	
13	2008388	00	COVER TOP OIL SUMP SSL	2	
14	7028078	00	CHAINCASE FRONT TOP COVER ASSY SSL	2	
15	7023430	01	FILTER MNT SQ TUBE ASSY SSL	1	
16	2000338	00	WASHER PLATE M8	16	
17	2000340	00	WASHER SPRING M6	8	
18	2000347	00	BOLT M6X20	8	
19	2008419	00	MAIN FRAME VENT COVER SSL	2	
20	2000346	00	BOLT DOME HEAD M6X20	8	
21	2009736	00	FUEL FLOAT SENSOR	1	
22	2003146	00	WASHER PLATE M4	6	
23	2010464	00	BOLT ALLEN M4X30	6	
24	7022829	00	BUMBER ASSY SSL	1	
25	2001543	00	WASHER PLATE M10	3	
26	2000292	00	WASHER SPRING M10	3	
27	2000300	00	BOLT M10X30	3	
28	2000352	00	WASHER PLATE M8	8	
29	2000353	00	WASHER SPRING M8	6	
30	2000360	00	BOLT M8X20	20	
31	7022828	00	LOCK ASSY REAR DOOR SSL	1	
32	7022814	01	CHAINCASE SIDE COVER ASSY SSL	2	
33	2008398	00	COVER 1 BOTTOM SSL	1	
34	2008399	00	COVER 2 BOTTOM SSL	1	
35	2008407	00	COVER 3 BOTTOM SSL	2	
36	7026566	00	BATTERY STOPPER ASSY SSL	1	
37	2000354	00	NUT M8	2	



**2. DIESEL PIPE MOUNTING ASSY SSL**

ITEM	PART NO.	REV NO.	DESCRIPTION	QTY	REMARKS
1	7028076	00	DIESEL TANK NECK PIPE ASSY SSL	1	
2	2000586	00	OIL SEAL	1	
3	2000338	00	WASHER PLATE M8	4	
4	2000340	00	WASHER SPRING M6	4	
5	2000346	00	BOLT DOME HEAD M6X20	4	
6	2008236	00	DIESEL TANK CAP SSL	1	

**14. CHAINCASE FRONT TOP COVER ASSY SSL**

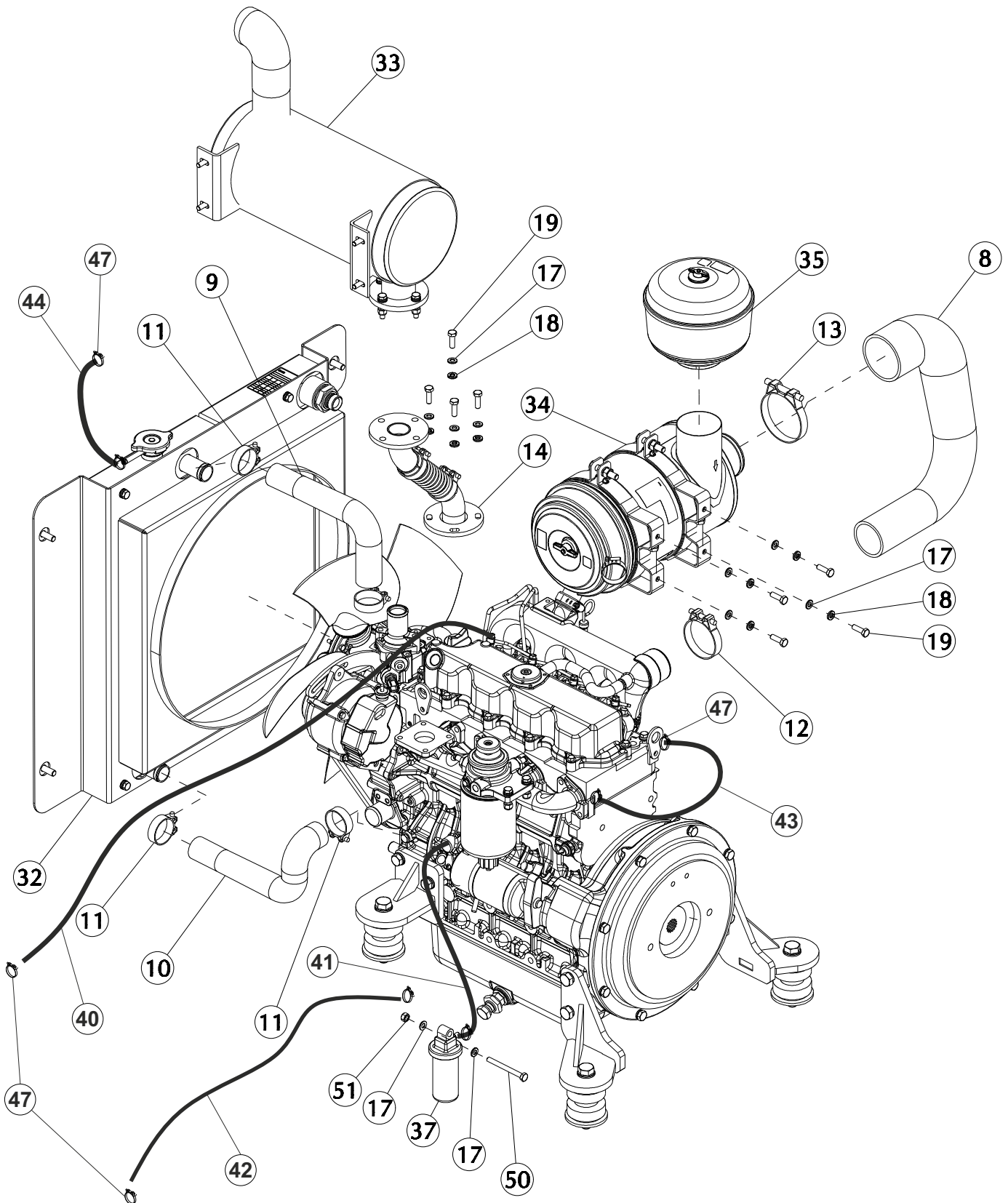
ITEM	PART NO.	REV NO.	DESCRIPTION	QTY	REMARKS
1	7028078	00	OILSUMP FRONT TOP CVR STR ASSY SSL	1	
2	2008220	00	GASKER COVER SSL	1	
3	2000338	00	WASHER PLATE M6	4	
4	2000340	00	WASHER SPRING M6	4	
5	2000347	00	BOLT M6X20	4	
6	2011097	00	BREATHER CHAINCASE 1_4	1	

**32. CHAINCASE SIDE COVER ASSY SSL**

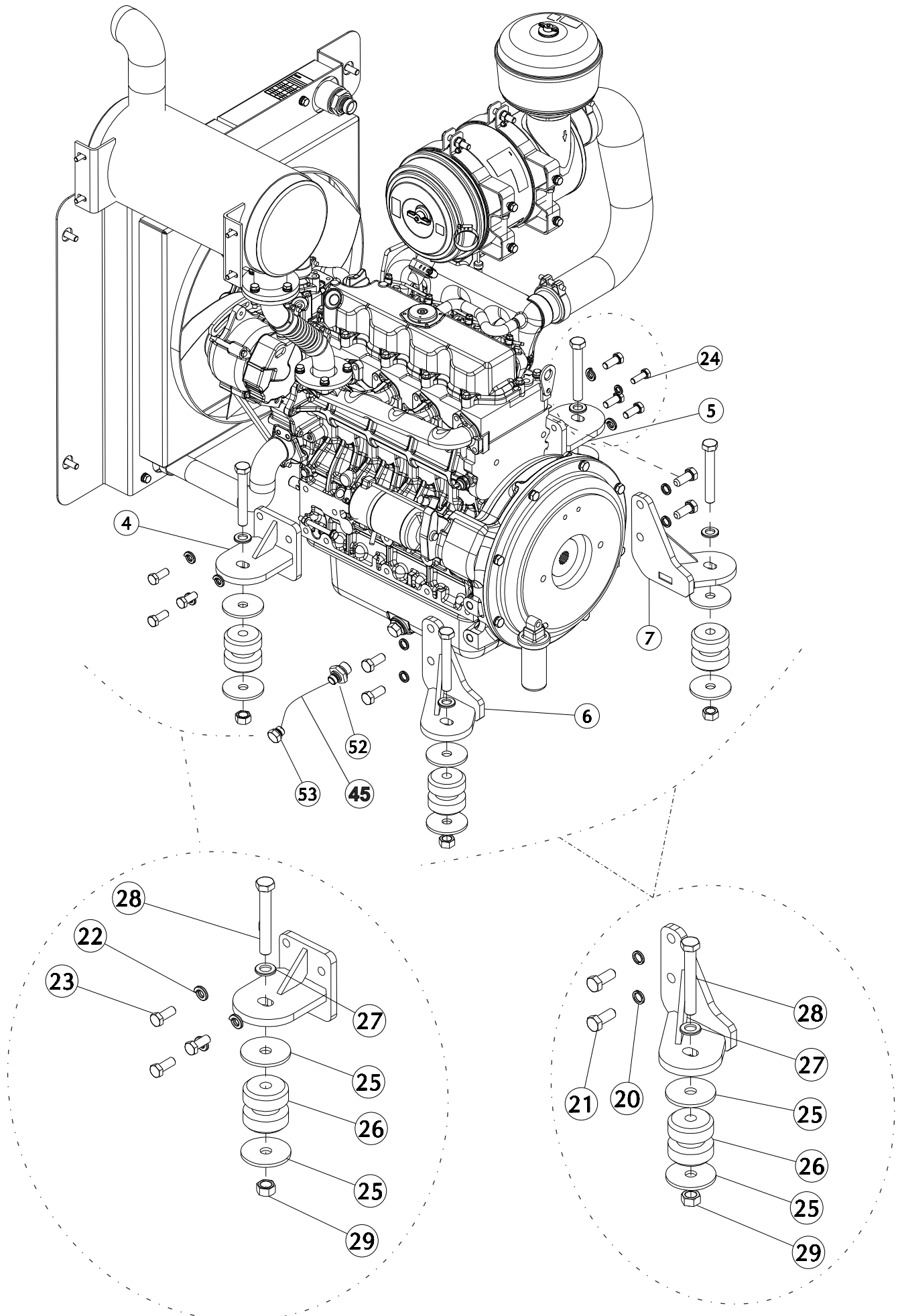
ITEM	PART NO.	REV NO.	DESCRIPTION	QTY	REMARKS
1	7022843	00	OILSUMP SIDE CVR STR ASSY SSL	1	
2	2000036	00	WASHER BONDED	1	
3	2000037	00	HYDRAULIC TUBE FITTING NIPPLE	1	
4	2008219	00	GASKET SIDE COVER SSL	1	
5	2000338	00	WASHER PLATE M8	6	
6	2000340	00	WASHER SPRING M6	6	
7	2000347	00	BOLT M6X20	6	

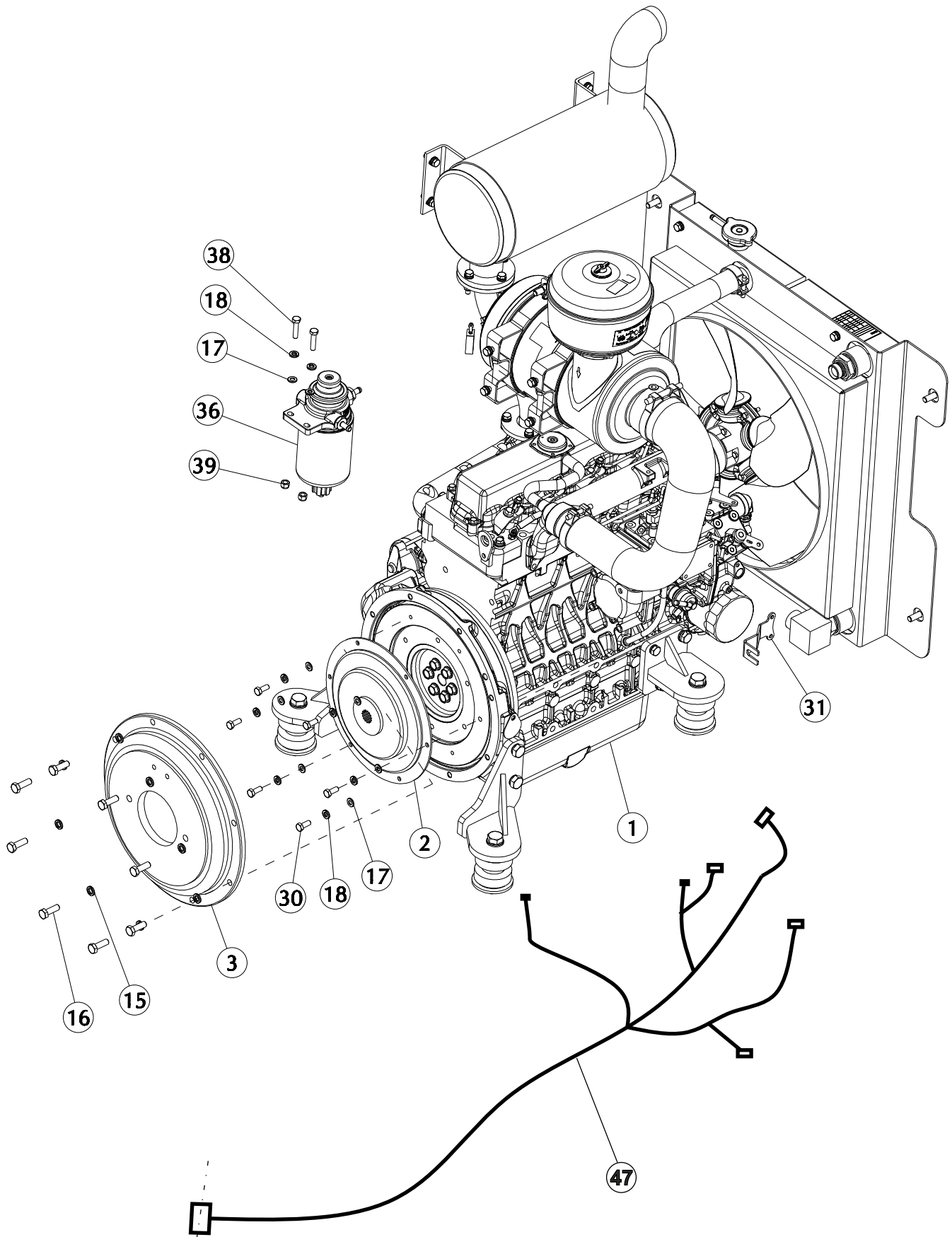


# **ENGINE AND HYDRAULIC PUMP ASSEMBLY**

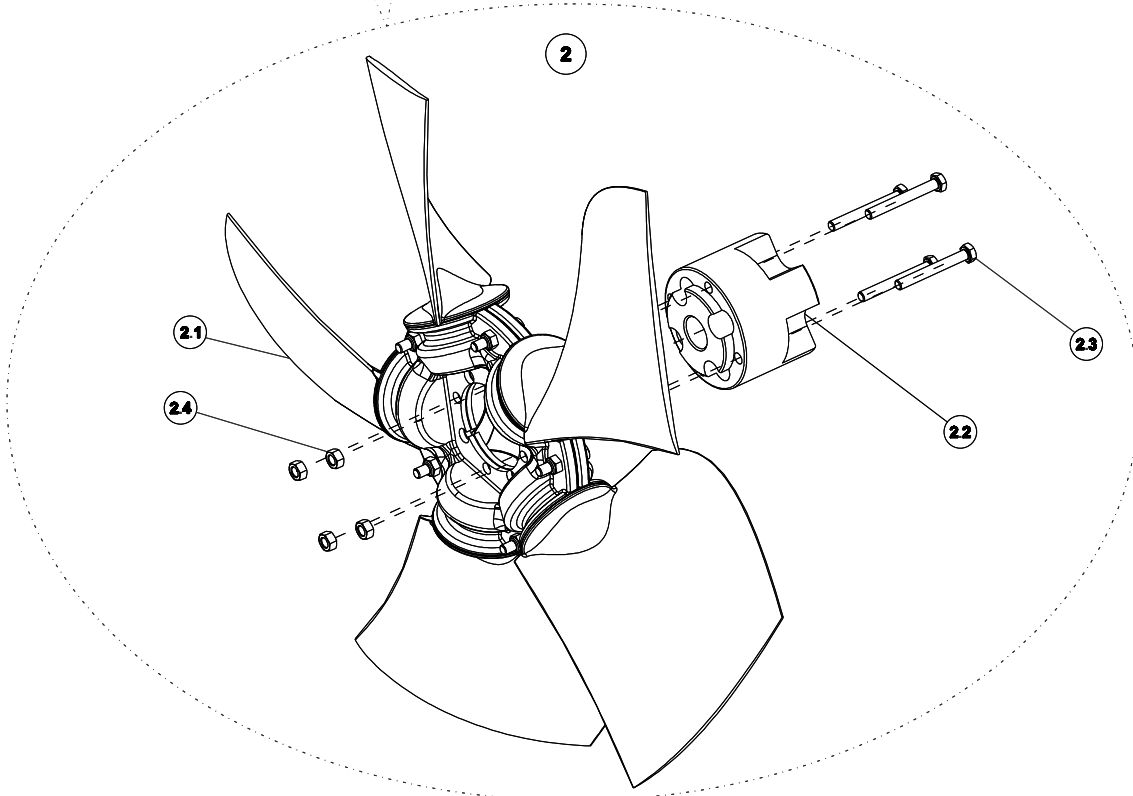
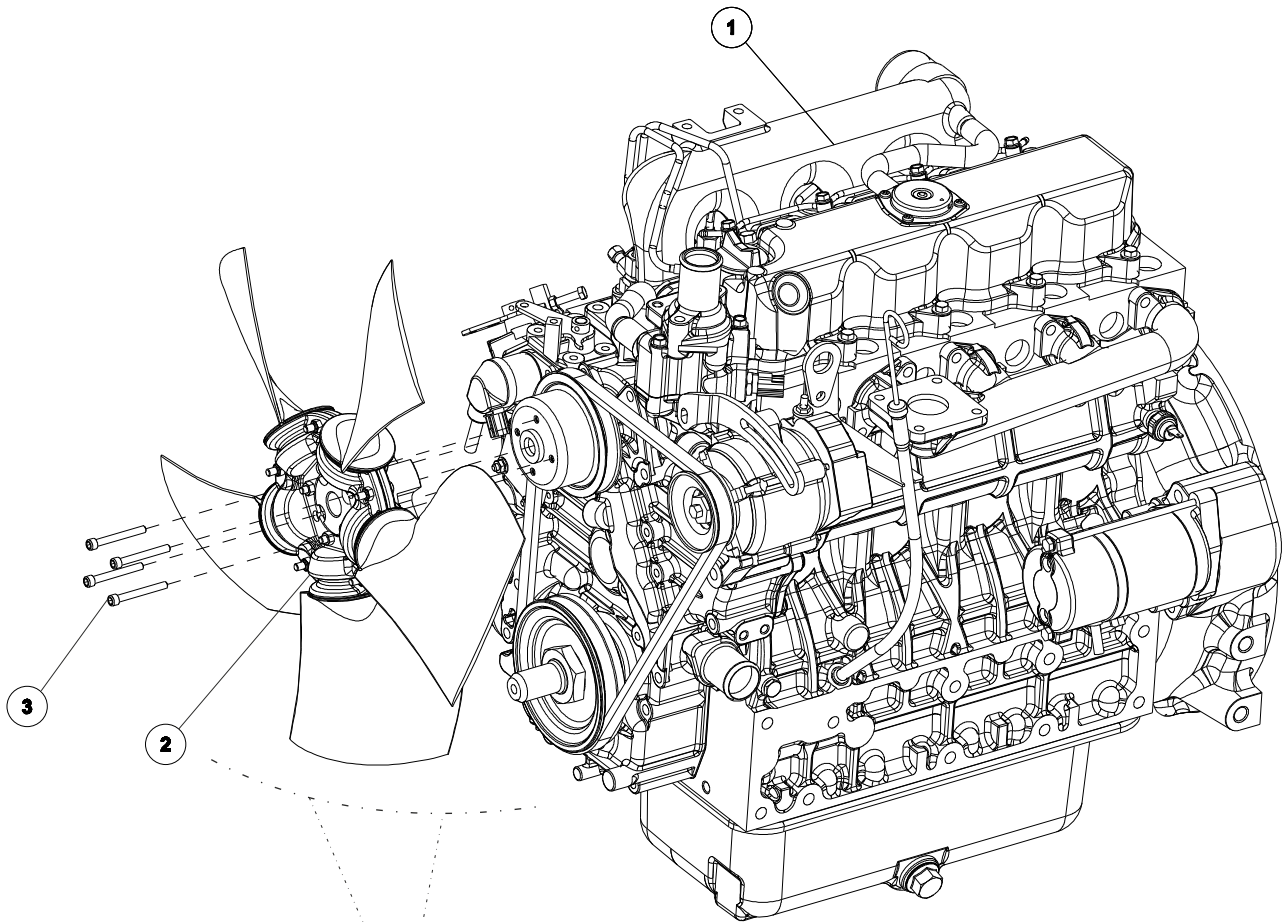








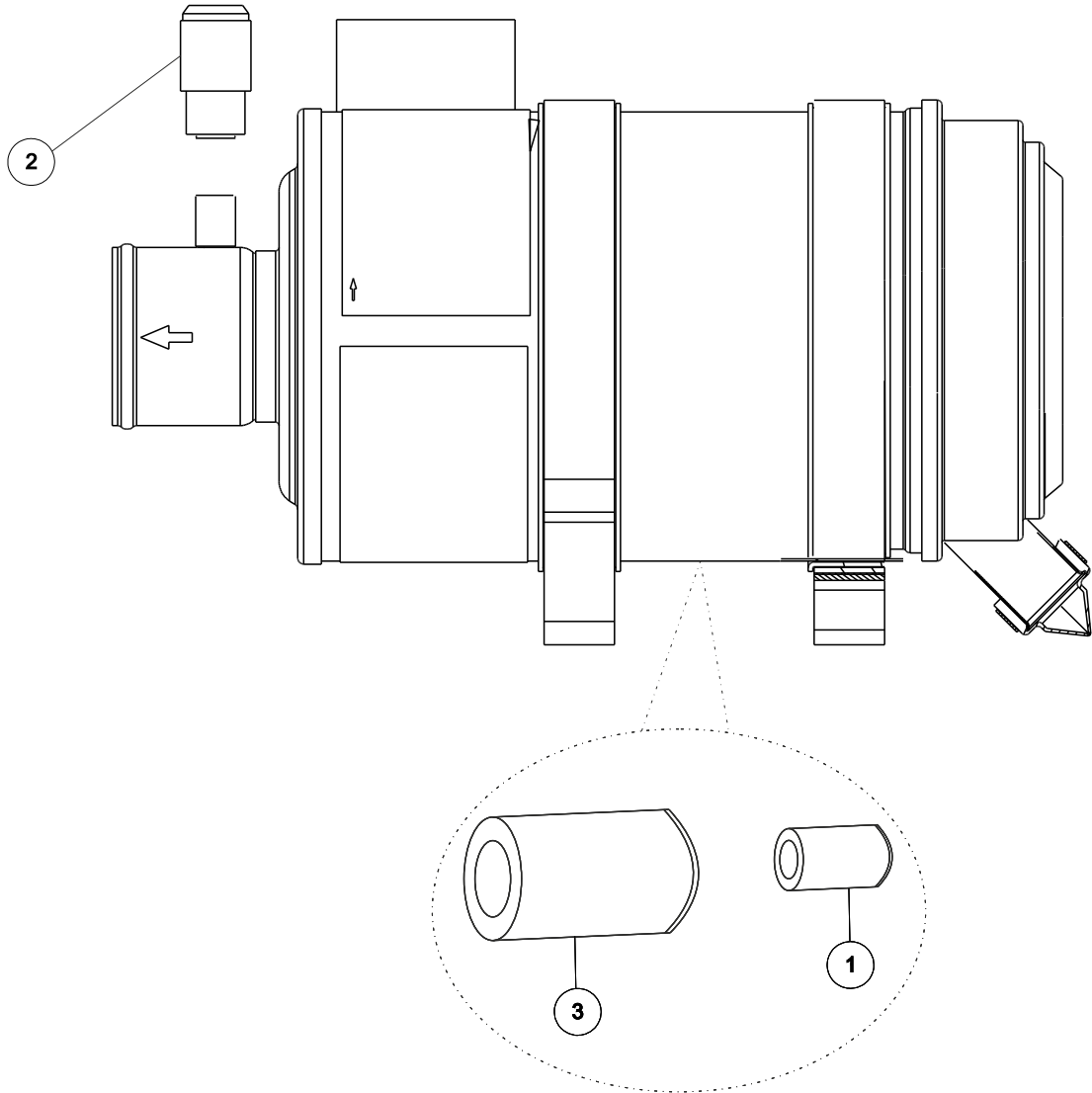
ITEM	PART NO.	REV NO.	DESCRIPTION	QTY	REMARKS
1	7022830	00	ENGINE WITH FAN ASSEMBLY	1	
2	2007277	00	COUPLING PUMP ENGINE SSL	1	
3	7022831	02	HOUSING ENGINE COUPLING SSL	1	
4	7022834	00	BRKT ENG REAR RH ASSY SSL	1	
5	7022835	00	BRKT ENG REAR LH ASSY SSL	1	
6	7022836	00	BRKT ENG REAR RH ASSY SSL	1	
7	7022837	00	BRKT ENG FRNT LH ASSY SSL	1	
8	2008009	01	HOSE ENG AIRFILTER SSL	1	
9	2008007	00	HOSE RADIATOR TOP SSL	1	
10	2008008	00	HOSE RADIATOR BTM SSL	1	
11	2003515	00	CLAMP HOSE	4	
12	2003512	00	CLAMP HOSE	1	
13	2003511	00	CLAMP HOSE	1	
14	2008227	01	HOSE METTALIC WITH FLANGE SSL	1	
15	2000292	00	WASHER SPRING M10	9	
16	2000300	00	BOLT M10X30	8	
17	2000352	00	WASHER PLATE M8	18	
18	2000353	00	WASHER SPRING M8	16	
19	2000361	00	BOLT M8X25	8	
20	2001547	00	WASHER SPRING M14	4	
21	2008872	00	BOLT M14X35	4	
22	2000307	00	WASHER SPRING M12	6	
23	2008873	00	BOLT M12X30	6	
24	2002871	00	BOLT M10X30	1	
25	7022898	00	WASHER BED	8	
26	2008221	00	BED ENGINE	4	
27	2001574	00	WASHER PLATE M16	4	
28	2002953	00	BOLT M16X110	4	
29	2000325	00	NUT M16	4	
30	2000360	00	BOLT M8X20	6	
31	7023250	01	BRACKET ACC CABLE SSL	1	
32	7022812	01	RADIATOR ASSEMBLY	1	
33	7022815	00	MUFFLER ASSEMBLY	1	
34	2007336	00	AIR CLEANER SSL	1	
35	2007337	00	PRE CLEANER SSL	1	
36	2007059	00	FILTER FUEL SSL	1	
37	2007058	00	WATER SEPERATOR SSL	1	
38	2000758	00	BOLT M8X35	2	
39	2000354	00	NUT M8	2	
40	2009344	00	HOSE	1	
41	2009342	00	HOSE	1	
42	2009341	00	HOSE	1	
43	2009343	00	HOSE	1	
44	2006110	00	HOSE	1	
45	2000533	00	HOSE	1	
46	2009319	00	HOSE	1	
47	2000193	00	CLAMP	10	
48	2009324	00	HARNESS ENGINE	1	
49	3001889	00	OIL ENGINE	1	
50	2000366	00	BOLT M8X90	1	
51	2000355	00	NUT NYLOCK M8	1	
52	2001713	01	HYDRAULIC TUBE FITTING CONNECTOR	1	
53	2009507	00	HYDRAULIC TUBE FITTING NIPPLE	1	





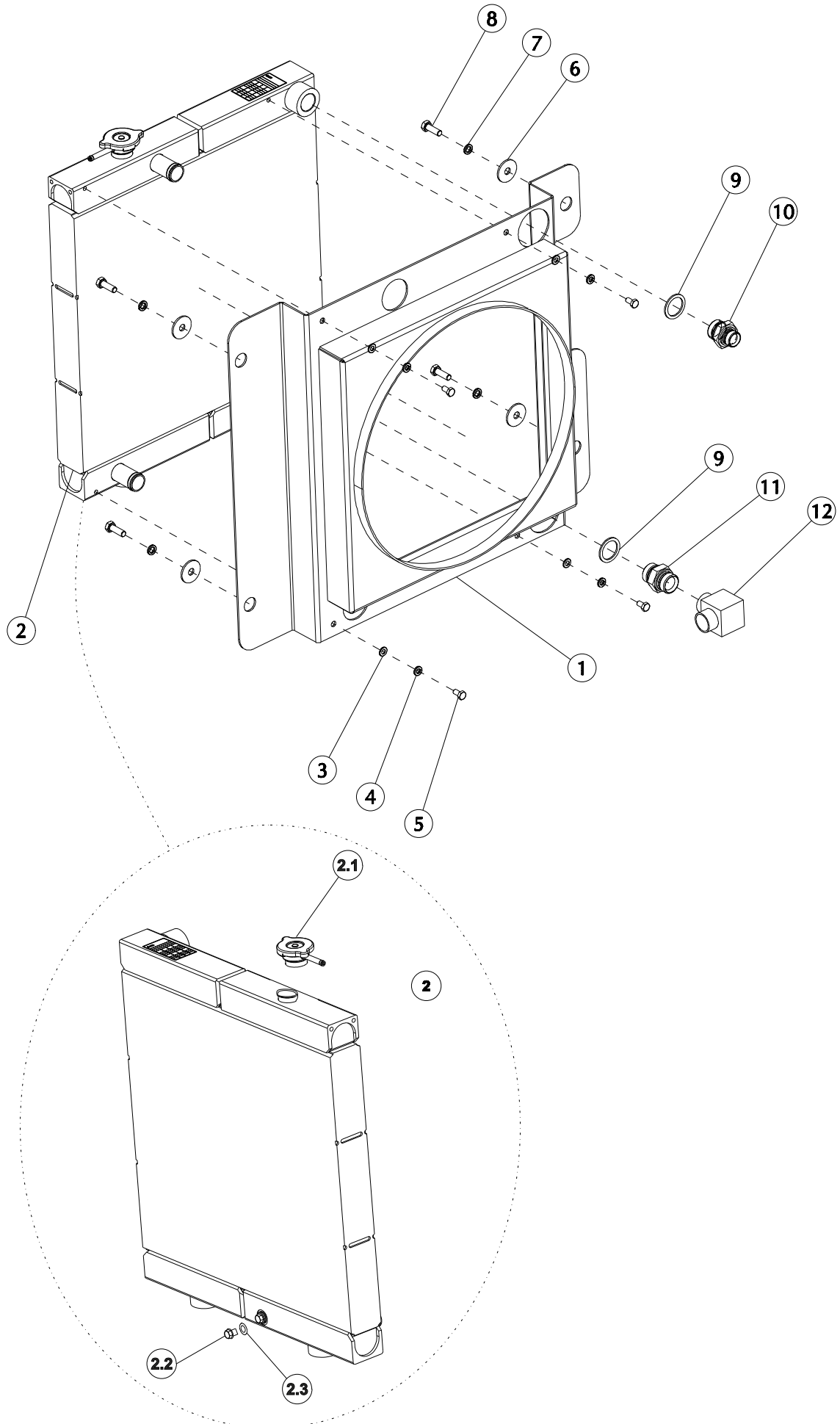
## ENGINE WITH FAN ASSEMBLY

ITEM	PART NO.	REV NO.	DESCRIPTION	QTY	REMARKS
1	2010848	00	ENGINE_SSL	1	
2	7022880	00	FAN HUB ASSEMBLY	1	
3	2000767	00	BOLT ALLEN M6X50	4	
2.1	2003159	00	FAN SSL	1	
2.2	2008309	00	HUB FAN SSL	1	
2.3	2010492	00	BOLT M6X50	4	
2.4	2000341	00	NUT M6	4	



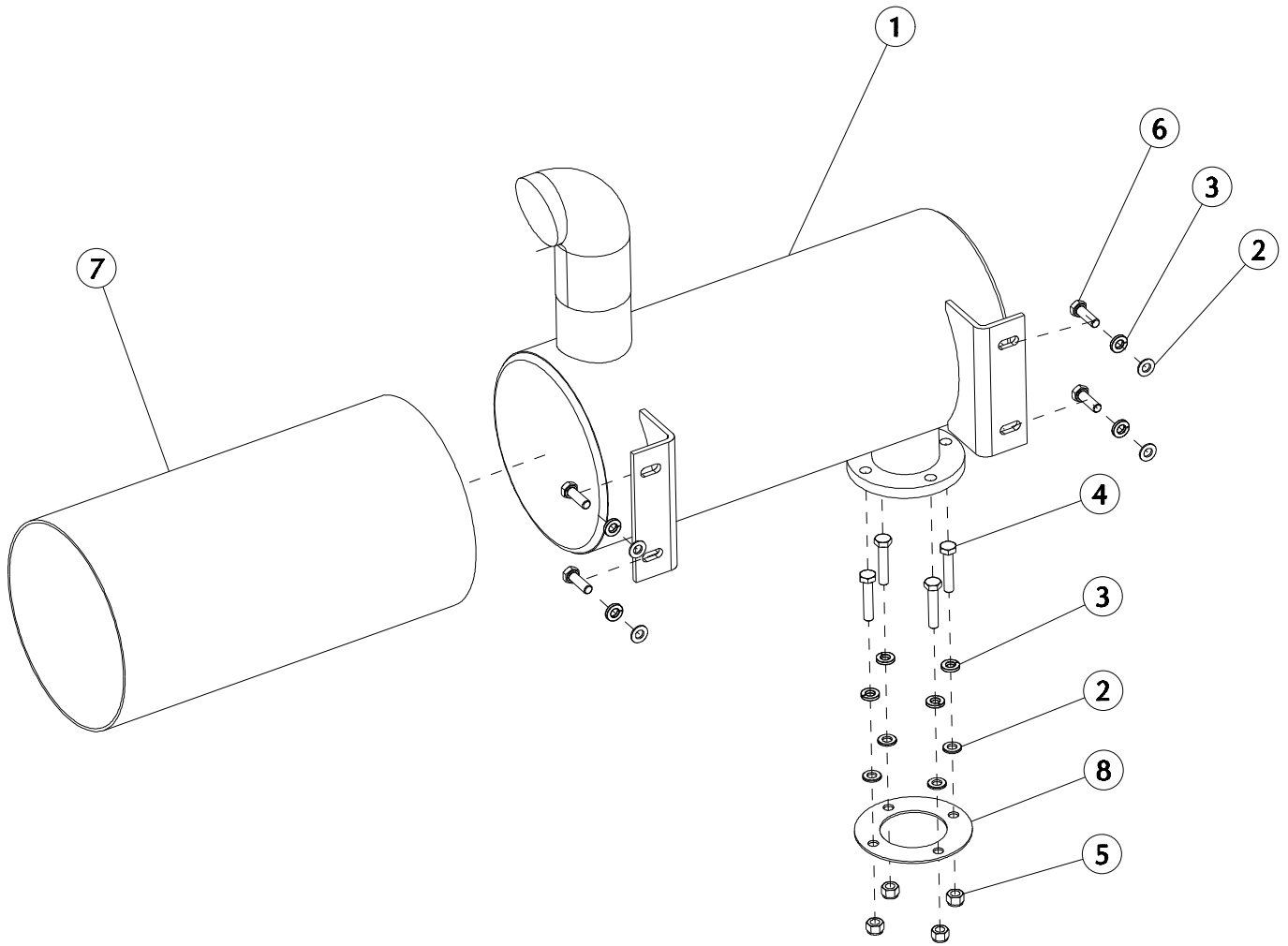
---

<b>ITEM</b>	<b>PART NO.</b>	<b>REV NO.</b>	<b>DESCRIPTION</b>	<b>QTY</b>	<b>REMARKS</b>
1	2007649	00	AIR FILTER SAFETY	1	
2	2008588	03	RESTRICTION INDICATOR	1	
3	2007695	00	AIR FILTER PRIMARY	1	





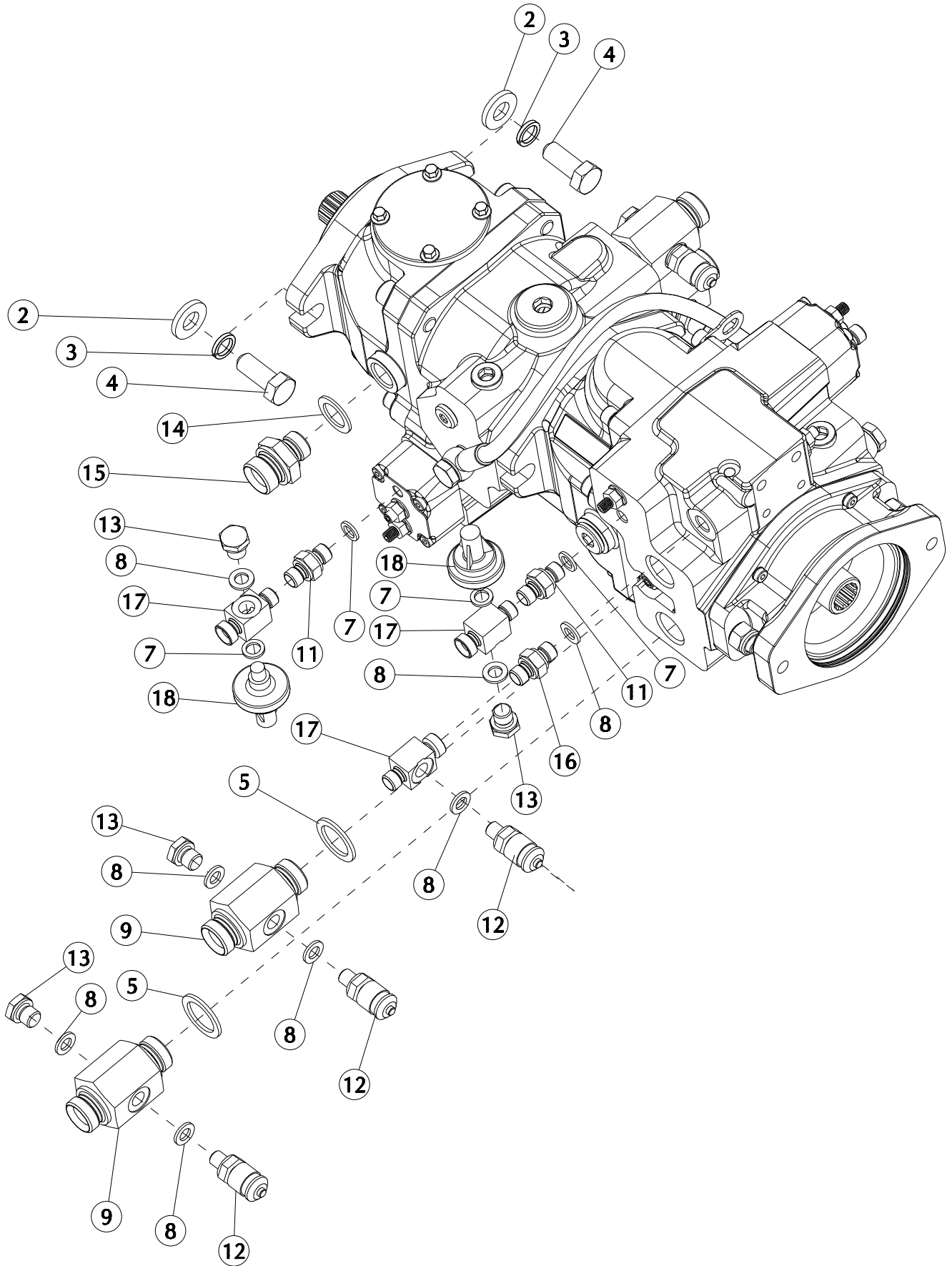
<b>ITEM</b>	<b>PART NO.</b>	<b>REV NO.</b>	<b>DESCRIPTION</b>	<b>QTY</b>	<b>REMARKS</b>
1	7022839	00	RADIATOR FAB ASSY SSL	1	
2	2007249	00	RADIATOR SSL	1	
3	2000352	00	WASHER PLATE M8	4	
4	2000353	00	WASHER SPRING M8	4	
5	2000357	00	BOLT M8X15	4	
6	2008457	00	WASHER RADIATOR SSL	4	
7	2000292	00	WASHER SPRING M10	4	
8	2000300	00	BOLT M10X30	4	
9	2000039	00	WASHER BONDED	2	
10	2000058	01	HYDRAULIC TUBE FITTING CONNECTOR	1	
11	2001701	02	HYDRAULIC TUBE FITTING CONNECTOR	1	
12	2009278	00	HYDRAULIC TUBE FITTING CONNECTOR	1	
2.1	2011779	00	CAP	1	
2.2	2011778	00	PLUG M14	1	
2.3	2011777	00	BONDED WASHER M14	1	

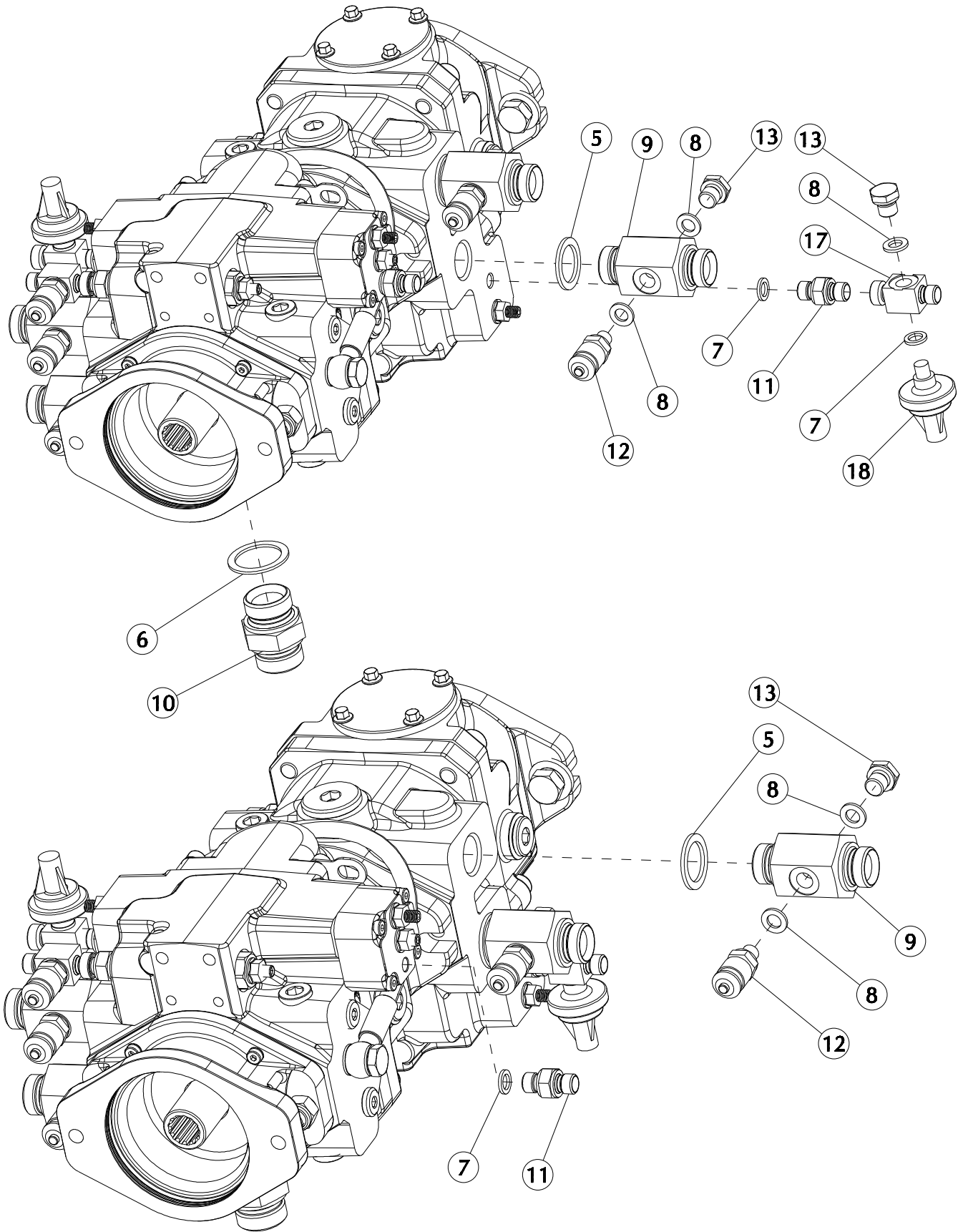


**MUFFLER ASSEMBLY**

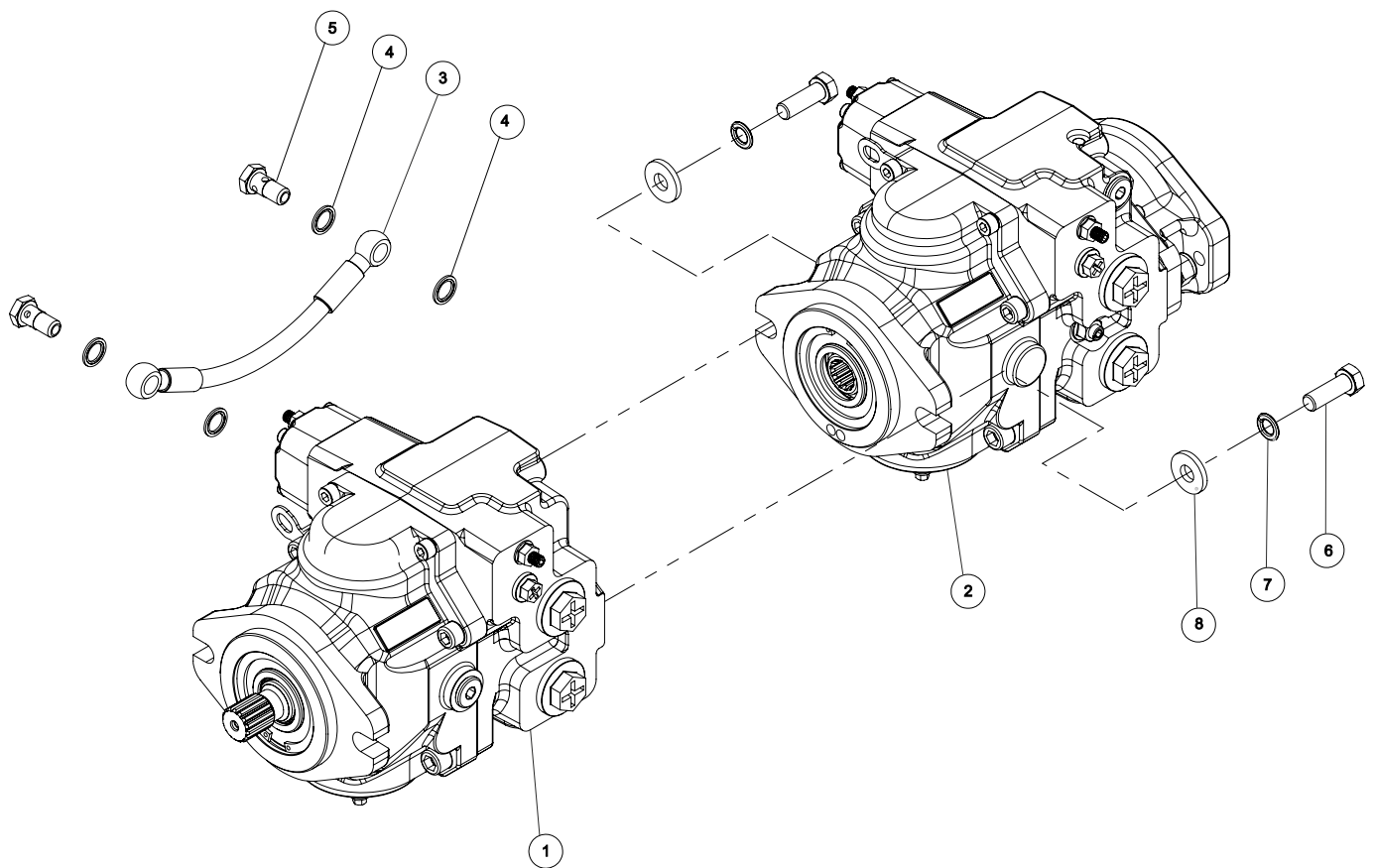
<b>ITEM</b>	<b>PART NO.</b>	<b>REV NO.</b>	<b>DESCRIPTION</b>	<b>QTY</b>	<b>REMARKS</b>
1	2007579	00	MUFFLER SSL	1	
2	2000352	00	WASHER PLATE M8	8	
3	2000353	00	WASHER SPRING M8	8	
4	2000759	00	BOLT M8X 45	4	
5	2000354	00	NUT M8	4	
6	2000361	00	BOLT M8X25	4	
7	2008233	00	SHEET AL FOIL SILENCER	1	
8	2009280	00	PACK SHEET MUFFLER TOP SSL	1	





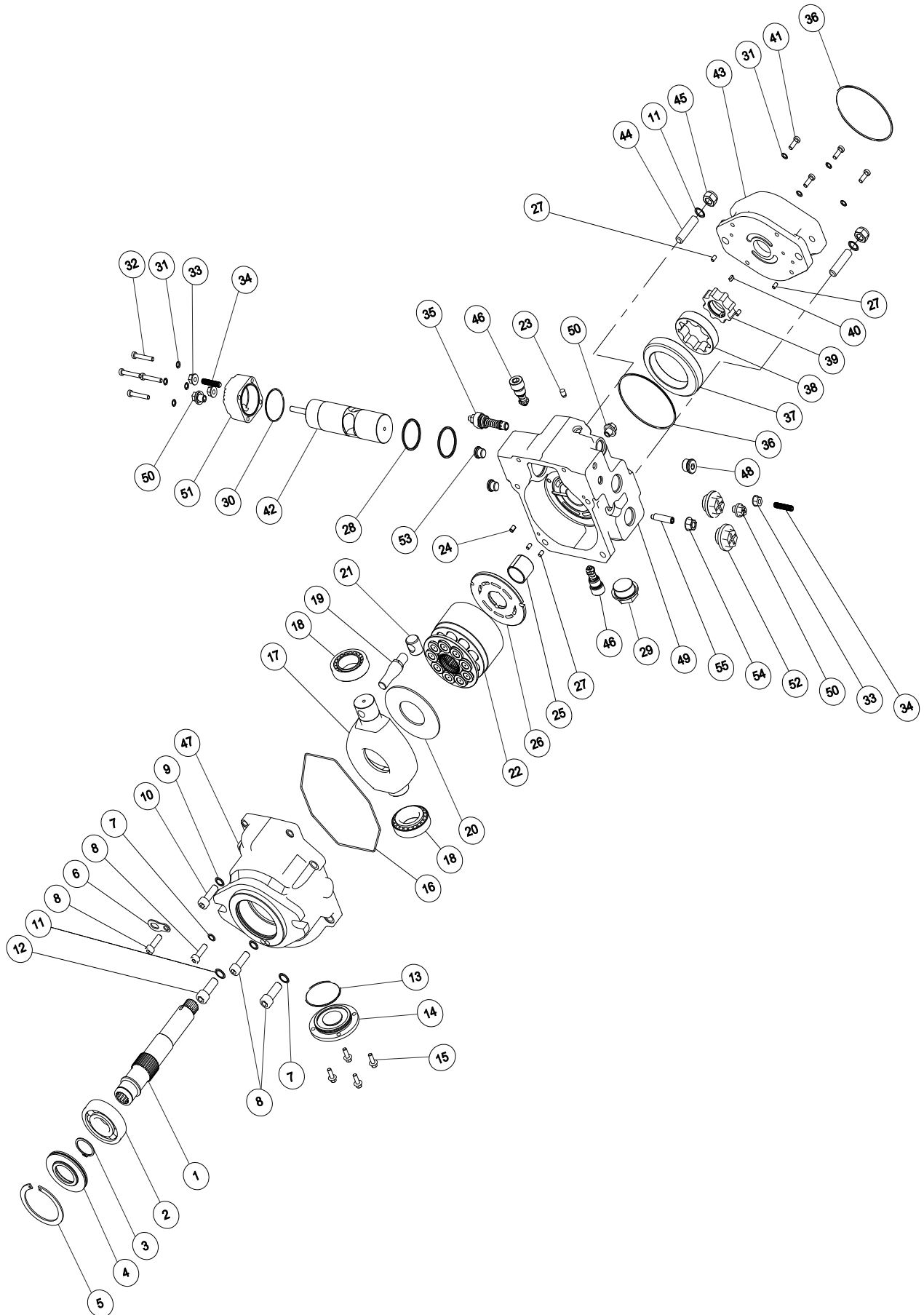


<b>ITEM</b>	<b>PART NO.</b>	<b>REV NO.</b>	<b>DESCRIPTION</b>	<b>QTY</b>	<b>REMARKS</b>
1	2007136	01	TANDEM PUMP	1	
2	2008871	00	WASHER PLATE M14	2	
3	2001547	00	WASHER SPRING M14	2	
4	2008872	00	BOLT M14X35	2	
5	2000073	00	WASHER BONDED	4	
6	2000039	00	WASHER BONDED	1	
7	2009508	00	WASHER BONDED	7	
8	2000036	00	WASHER BONDED	8	
9	2009510	00	HYDRAULIC TUBE FITTING CONNECTOR	4	
10	2001701	02	HYDRAULIC TUBE FITTING CONNECTOR	1	
11	2009509	00	HYDRAULIC TUBE FITTING CONNECTOR	4	
12	2000247	00	HYDRAULIC TUBE FITTING CONNECTOR	5	
13	2000037	00	HYDRAULIC TUBE FITTING NIPPLE	7	
14	2000026	00	WASHER BONDED	1	
15	2000079	01	HYDRAULIC TUBE FITTING CONNECTOR	1	
16	2000038	03	HYDRAULIC TUBE FITTING CONNECTOR	1	
17	2010593	03	HYDRAULIC TUBE FITTING CONNECTOR	4	
18	2008470	00	PRESSURE SWITCH	3	

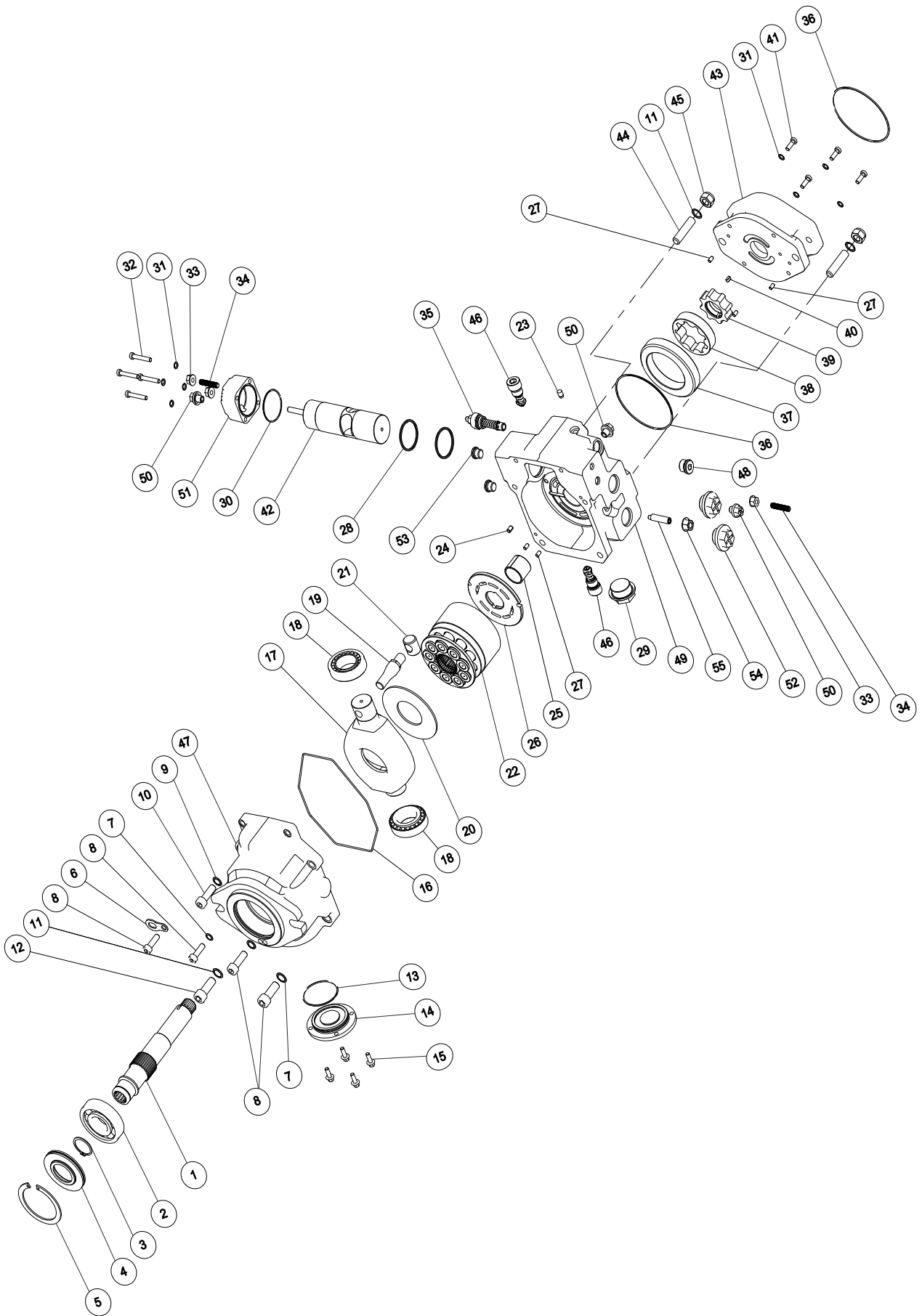




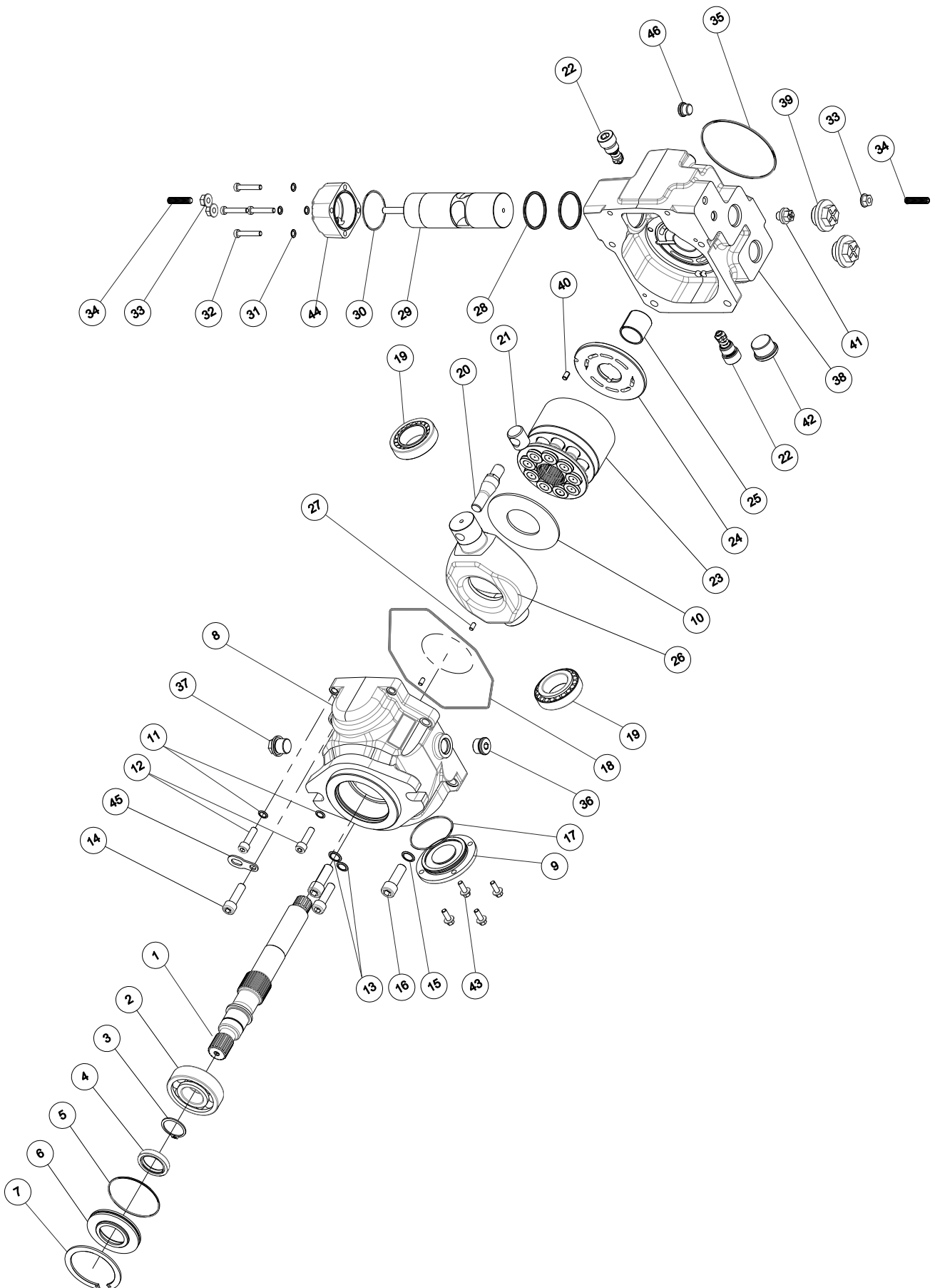
<b>ITEM</b>	<b>PART NO.</b>	<b>REV NO.</b>	<b>DESCRIPTION</b>	<b>QTY</b>	<b>REMARKS</b>
1	2009664	00	FRONT PUMP ASSEMBLY	1	
2	2009665	00	PUMP C346 SAE B	1	
3	2009666	00	HOSE	1	
4	2009667	00	SEAL WASHER G 1B4	4	
5	2009668	00	NUT	2	
6	2009669	00	SCREW M12X35	2	
7	2009670	00	WASHER DIA 12	2	
8	2009671	00	WASHER M12	2	



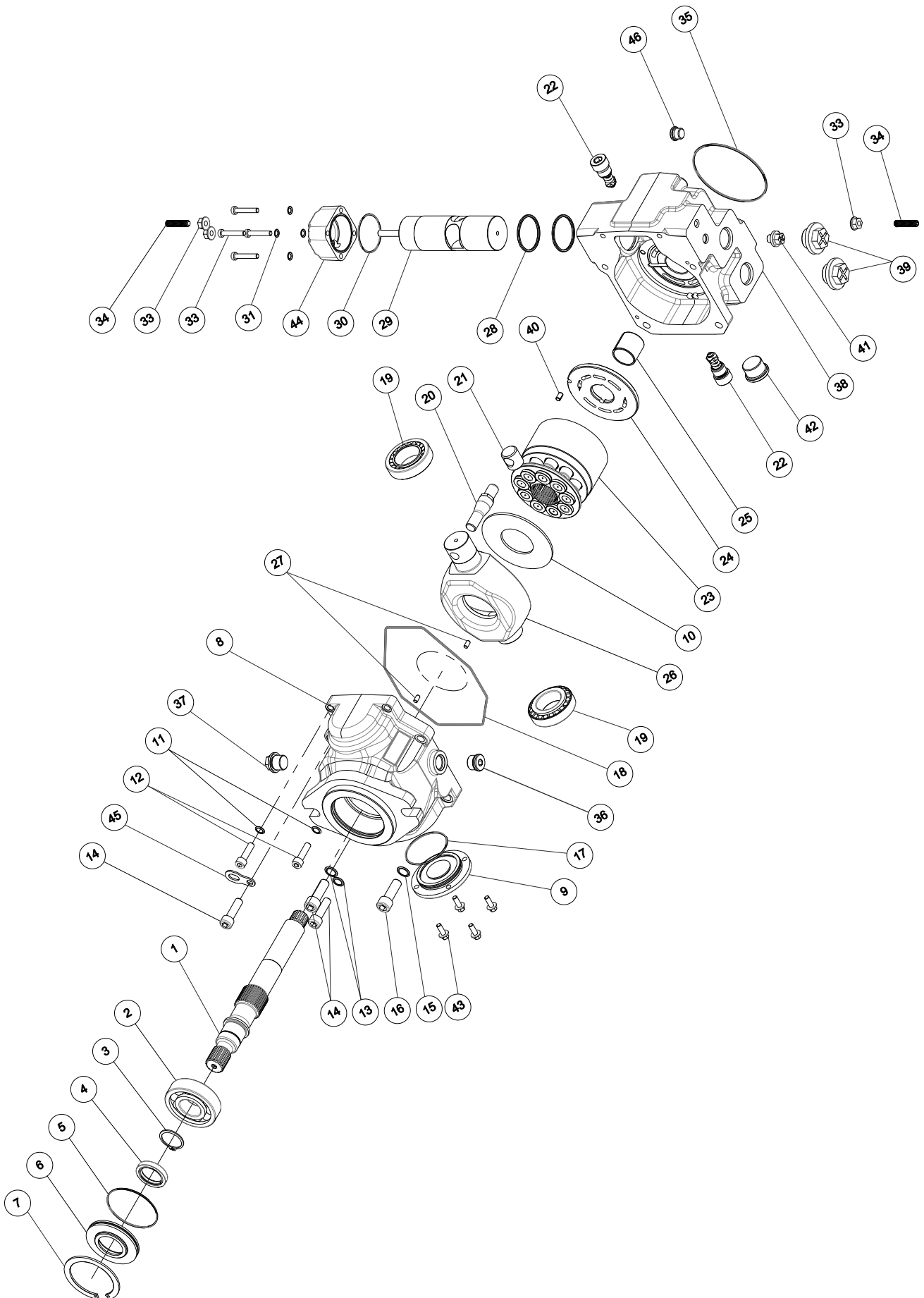
ITEM	PART NO.	REV NO.	DESCRIPTION	QTY	REMARKS
1	2009602	00	TANDEM PUMP SSL	1	
2	2009603	00	BALL BEARING RADIAL	1	
3	2009604	00	RING SNAP EXTERNAL	1	
4	2009605	00	OIL SEAL	1	
5	2009606	00	RING SNAP INTERNAL	1	
6	2009607	00	LIFTING EYE	1	
7	2009608	00	WASHER DIA 8	1	
8	2009609	00	SCREW M8X30	2	
9	2009610	00	WASHER DIA 10	2	
10	2009611	00	SCREW M10X35	2	
11	2009612	00	WASHER DIA 12	4	
12	2009613	00	SCREW M12X35	2	
13	2009614	00	OIL SEAL	1	
14	2009615	00	SWASH PLATE COVER	1	
15	2009616	00	BOLTS M6X16	4	
16	2011734	00	O-RING 1.78x164.34	1	
17	2009617	00	SWASH PLATE	1	
18	2009618	00	TAPER ROLLER BEARING	2	
19	2009619	00	SWASH PIN	1	
20	2009620	00	SWASH PLATE DISC	1	
21	2009621	00	SERVO PISTON LEVER	1	
22	2009622	00	ROTATING GROUP	1	
23	2009623	00	PLUG	1	
24	2009624	00	PIN ELASTIC	1	
25	2009625	00	TRIMETALLIC BUSHING	1	
26	2009626	00	VALVE PLATE	1	
27	2009627	00	PIN	5	
28	2009628	00	RING QUAD	2	
29	2009629	00	PLUG	1	
30	2009630	00	O RING 47.37X1.78	1	
31	2009631	00	WASHER DIA 6	8	
32	2009632	00	SCREW M6X35	4	
33	2009633	00	NUT BOLLHOFF	3	
34	2009634	00	SCREW M8X35	2	
35	2009635	00	CHARGE VALVE	1	
36	2009636	00	OIL SEAL	2	
37	2009637	00	CHARGE PUMP REVERSING RING	1	
38	2009638	00	CHARGE PUMP EXTERNAL	1	
39	2009639	00	CHARGE PUMP INTERNAL	1	
40	2009640	00	KEY	1	



<b>ITEM</b>	<b>PART NO.</b>	<b>REV NO.</b>	<b>DESCRIPTION</b>	<b>QTY</b>	<b>REMARKS</b>
41	2009641	00	SCREW M6X30	4	
42	2009642	00	SERVO PISTON ASSEMBLY	1	
43	2009643	00	FITTING	1	
44	2009644	00	SCREW M12X55	2	
45	2009645	00	NUT M6	2	
46	2009646	00	RELIEF VALVE	2	
47	2009647	00	PUMP BODY	1	
48	2009648	00	PLUG	1	
49	2009649	00	DISTRIBUTOR	1	
50	2009650	00	PLUG	3	
51	2009651	00	SERVO PISTON COVER	1	
52	2009652	00	PLUG	2	
53	2009653	00	PLUG	2	
54	2009654	00	SEAL NUT M10	1	
55	2009655	00	SCREW M12X55	1	

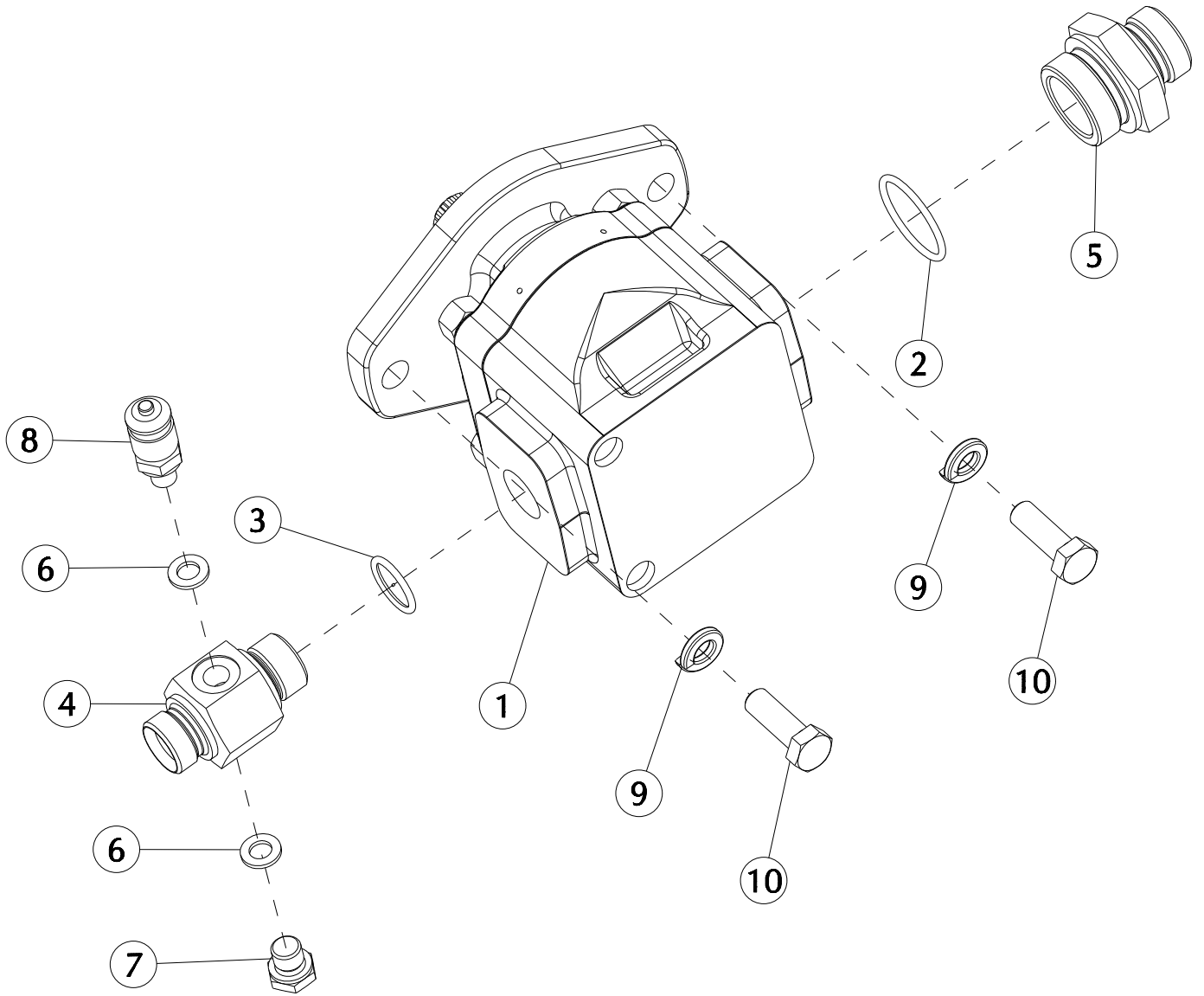


<b>ITEM</b>	<b>PART NO.</b>	<b>REV NO.</b>	<b>DESCRIPTION</b>	<b>QTY</b>	<b>REMARKS</b>
1	2009602	00	TANDEM PUMP SSL	1	
2	2009603	00	RADIAL BALL BEARING	1	
3	2009604	00	RING SNAP EXTERNAL	1	
4	2009656	00	OIL SEAL	1	
5	2009657	00	OIL SEAL	1	
6	2009605	00	OIL SEAL	1	
7	2009606	00	RING SNAP INTERNAL	1	
8	2009658	00	PUMP BODY	1	
9	2009615	00	SWASH PLATE COVER	1	
10	2009620	00	SWASH PLATE DISC	1	
11	2009608	00	WASHER DIA 8	2	
12	2009609	00	SCREW M8X30	2	
13	2009610	00	WASHER DIA 10	1	
14	2009611	00	SCREW M10X35	2	
15	2009612	00	WASHER DIA 12	2	
16	2009613	00	SCREW M12X35	2	
17	2009614	00	OIL SEAL	1	
18	2011734	00	OIL SEAL	1	
19	2009618	00	TAPER ROLLER BEARING	2	
20	2009619	00	SWASH PIN	1	
21	2009621	00	SERVO PISTON LEVER	1	
22	2009659	00	RELIEF VALVE	2	
23	2009622	00	ROTATING GROUP	1	
24	2009626	00	VALVE PLATE	1	
25	2009625	00	TRIMETALLIC BUSHING	1	
26	2009617	00	SWASH PLATE	1	
27	2009627	00	PIN	2	
28	2009628	00	QUAD RING	2	
29	2009660	00	SERVO PISTON ASSEMBLY	1	
30	2009630	00	OIL SEAL	1	
31	2009631	00	WASHER DIA 6	4	
32	2009632	00	SCREW M6X35	4	
33	2009633	00	BOLLHOFF NUT M8	3	
34	2009634	00	SCREW M8X35	2	
35	2009636	00	OIL SEAL	1	
36	2009648	00	PLUG	1	
37	2009661	00	PLUG	1	
38	2009662	00	DISTRIBUTOR	1	
39	2009652	00	PLUG	2	
40	2009624	00	ELASTIC PIN	1	

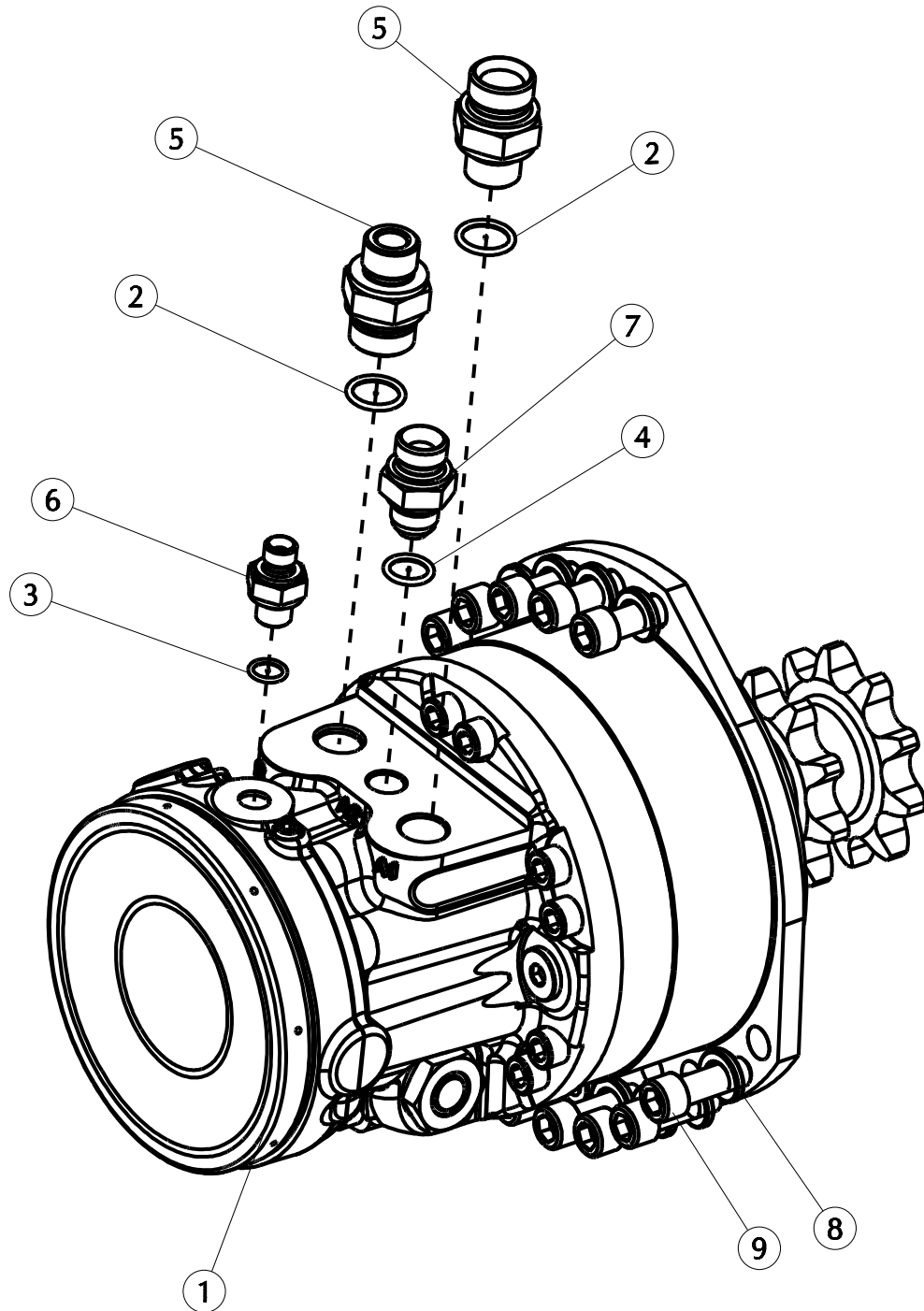




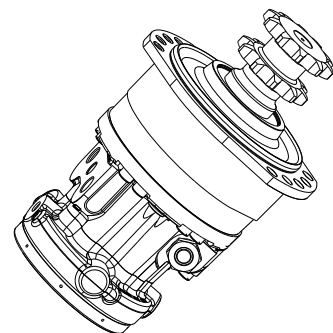
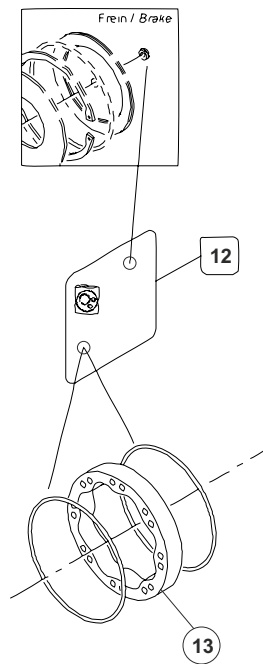
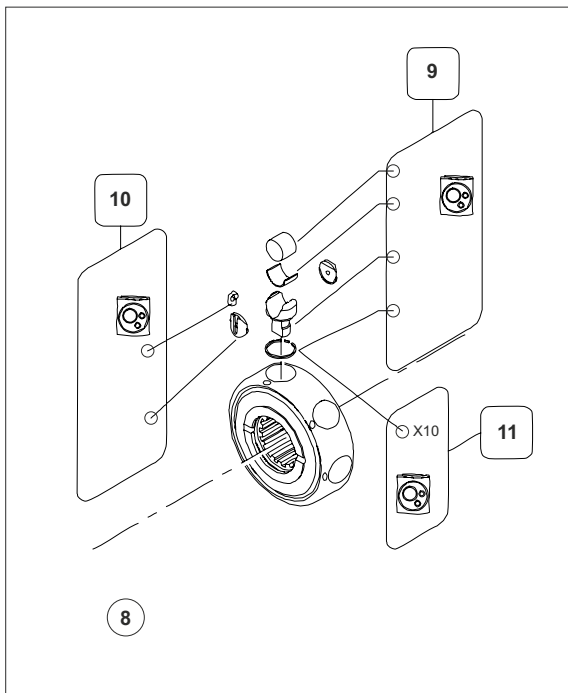
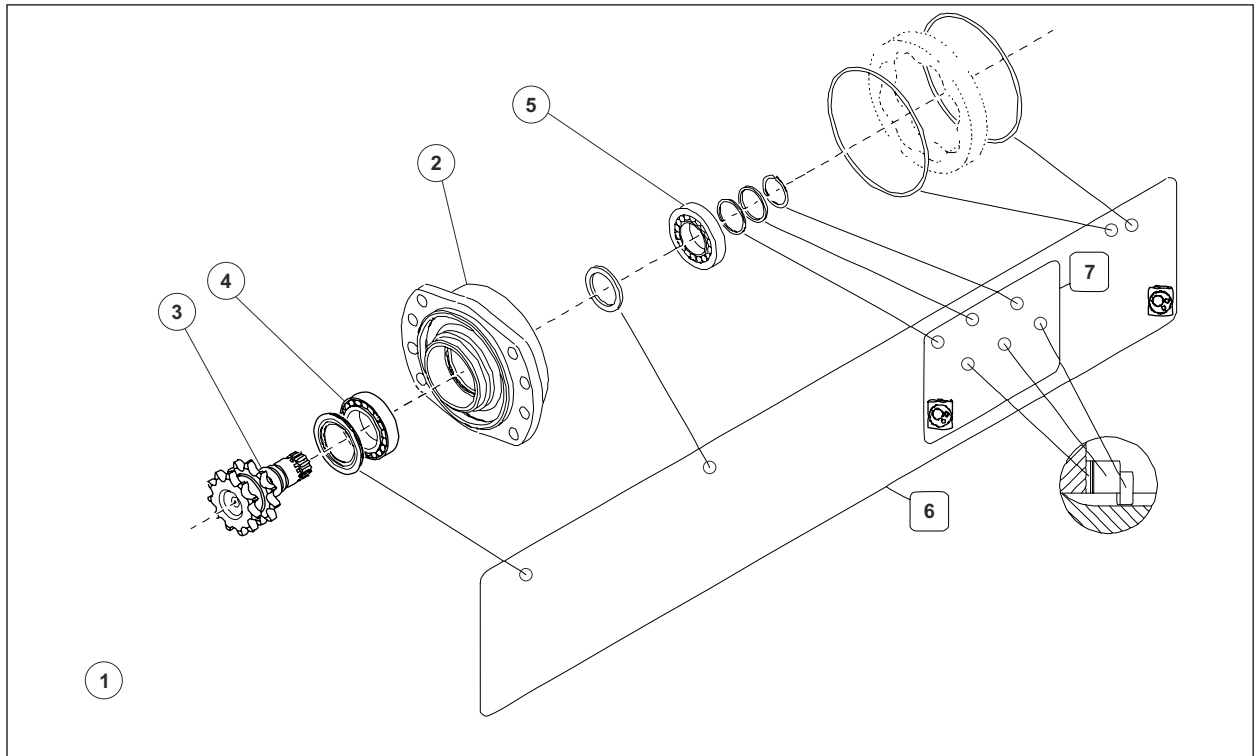
<b>ITEM</b>	<b>PART NO.</b>	<b>REV NO.</b>	<b>DESCRIPTION</b>	<b>QTY</b>	<b>REMARKS</b>
41	2009650	00	PLUG	2	
42	2009663	00	PLUG	1	
43	2009616	00	BOLT M6X16	4	
44	2009651	00	SERVO PISTON COVER	1	
45	2009607	00	LIFTING EYE	1	
46	2009653	00	PLUG	2	



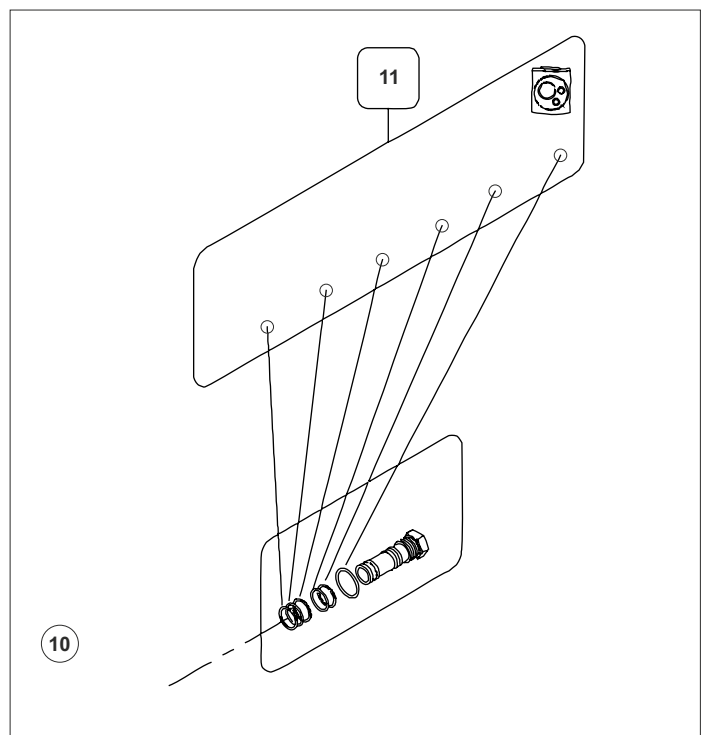
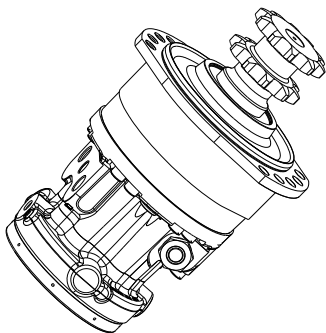
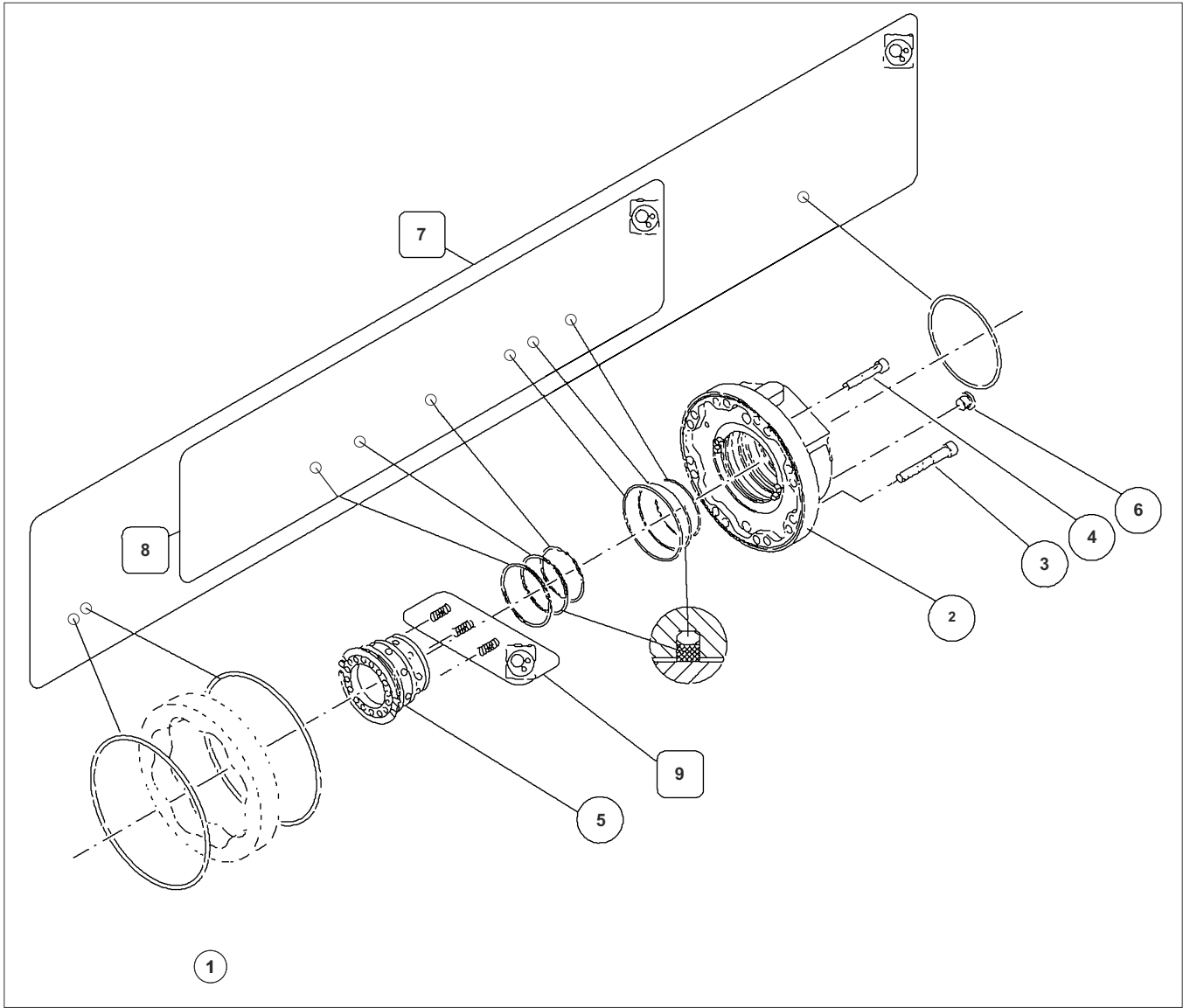
ITEM	PART NO.	REV NO.	DESCRIPTION	QTY	REMARKS
1	2009877	00	LOADER PUMP	1	
2	2000630	00	OIL SEAL	1	
3	2009292	00	OIL SEAL	1	
4	2000018	04	HYDRAULIC TUBE FITTING CONNECTOR	1	
5	2010594	00	HYDRAULIC TUBE FITTING CONNECTOR	1	
6	2000036	00	WASHER BONDED	2	
7	2000037	00	HYDRAULIC TUBE FITTING NIPPLE	1	
8	2000247	00	HYDRAULIC TUBE FITTING CONNECTOR	1	
9	2000307	00	WASHER SPRING M12	2	
10	2000764	00	BOLT M12X35	2	



<b>ITEM</b>	<b>PART NO.</b>	<b>REV NO.</b>	<b>DESCRIPTION</b>	<b>QTY</b>	<b>REMARKS</b>
<b>1</b>	<b>2007128</b>	<b>00</b>	<b>MOTOR</b>	<b>1</b>	
<b>2</b>	<b>2008993</b>	<b>00</b>	<b>OIL SEAL</b>	<b>3</b>	
<b>3</b>	<b>2002052</b>	<b>00</b>	<b>OIL SEAL</b>	<b>1</b>	
<b>4</b>	<b>2000098</b>	<b>04</b>	<b>HYDRAULIC TUBE FITTING CONNECTOR</b>	<b>2</b>	
<b>5</b>	<b>2010503</b>	<b>00</b>	<b>HYDRAULIC TUBE FITTING CONNECTOR</b>	<b>1</b>	
<b>6</b>	<b>2008887</b>	<b>00</b>	<b>HYDRAULIC TUBE FITTING CONNECTOR</b>	<b>1</b>	
<b>7</b>	<b>2000307</b>	<b>00</b>	<b>WASHER SPRING M12</b>	<b>10</b>	
<b>8</b>	<b>2009450</b>	<b>00</b>	<b>BOLT ALLEN M12X35</b>	<b>10</b>	



<b>ITEM</b>	<b>PART NO.</b>	<b>REV NO.</b>	<b>DESCRIPTION</b>	<b>QTY</b>	<b>REMARKS</b>
1	2009672	00	OTHER SUB ASSEMBLY	1	
2	2009673	00	BEARING SUPPORT	1	
3	2009674	00	SHAFT	1	
4	2009675	00	BEARING	1	
5	2009676	00	BEARING	1	
6	2009677	00	REPAIR KIT	1	
7	2009678	00	REPAIR KIT	1	
8	2009679	00	CYLINDER BLOCK	1	
9	2009680	00	RADIAL PISTON	8	
10	2009681	00	REPAIR KIT	1	
11	2009682	00	SEAL KIT	1	
12	2009683	00	SEAL KIT	1	
13	2009684	00	CAM	1	

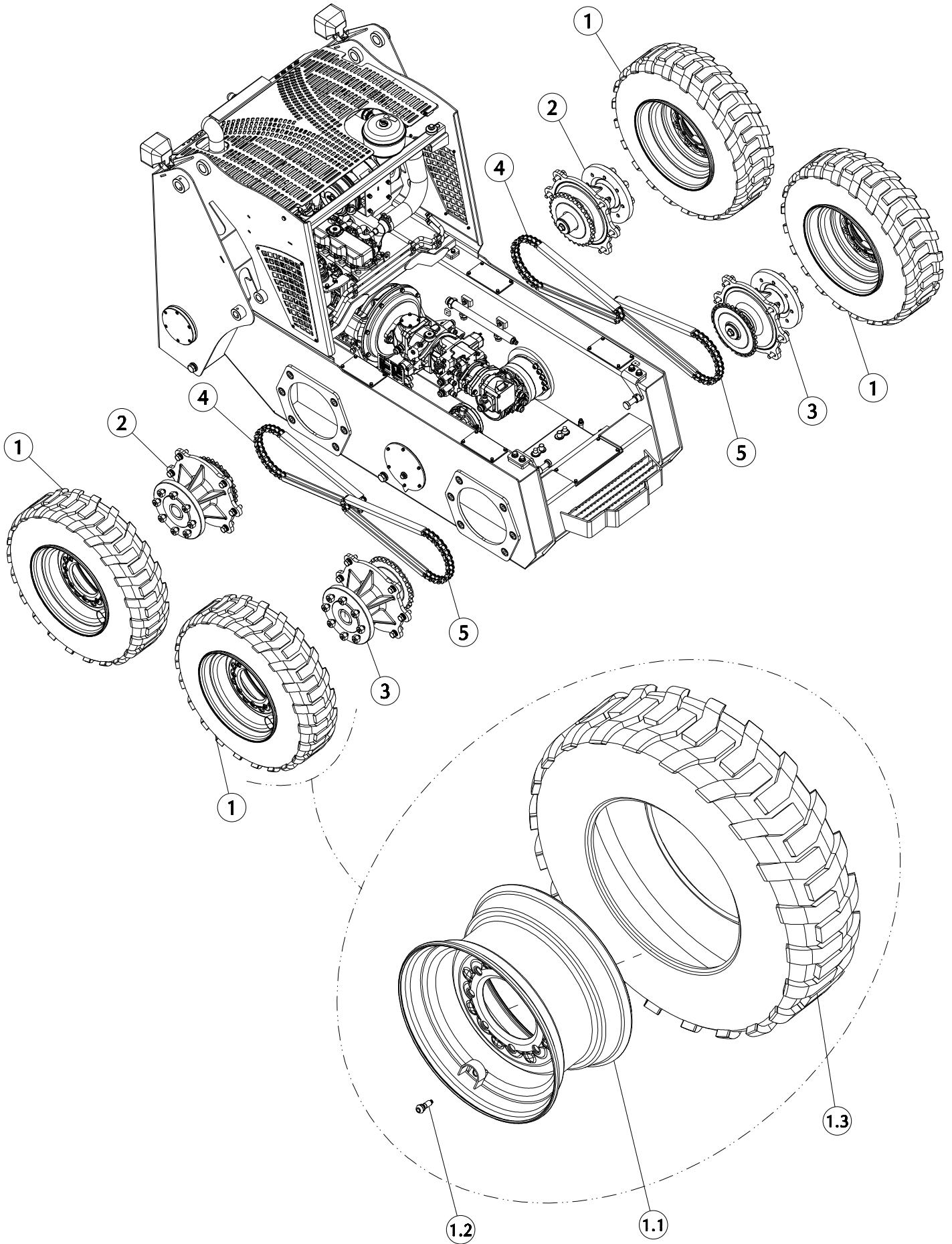




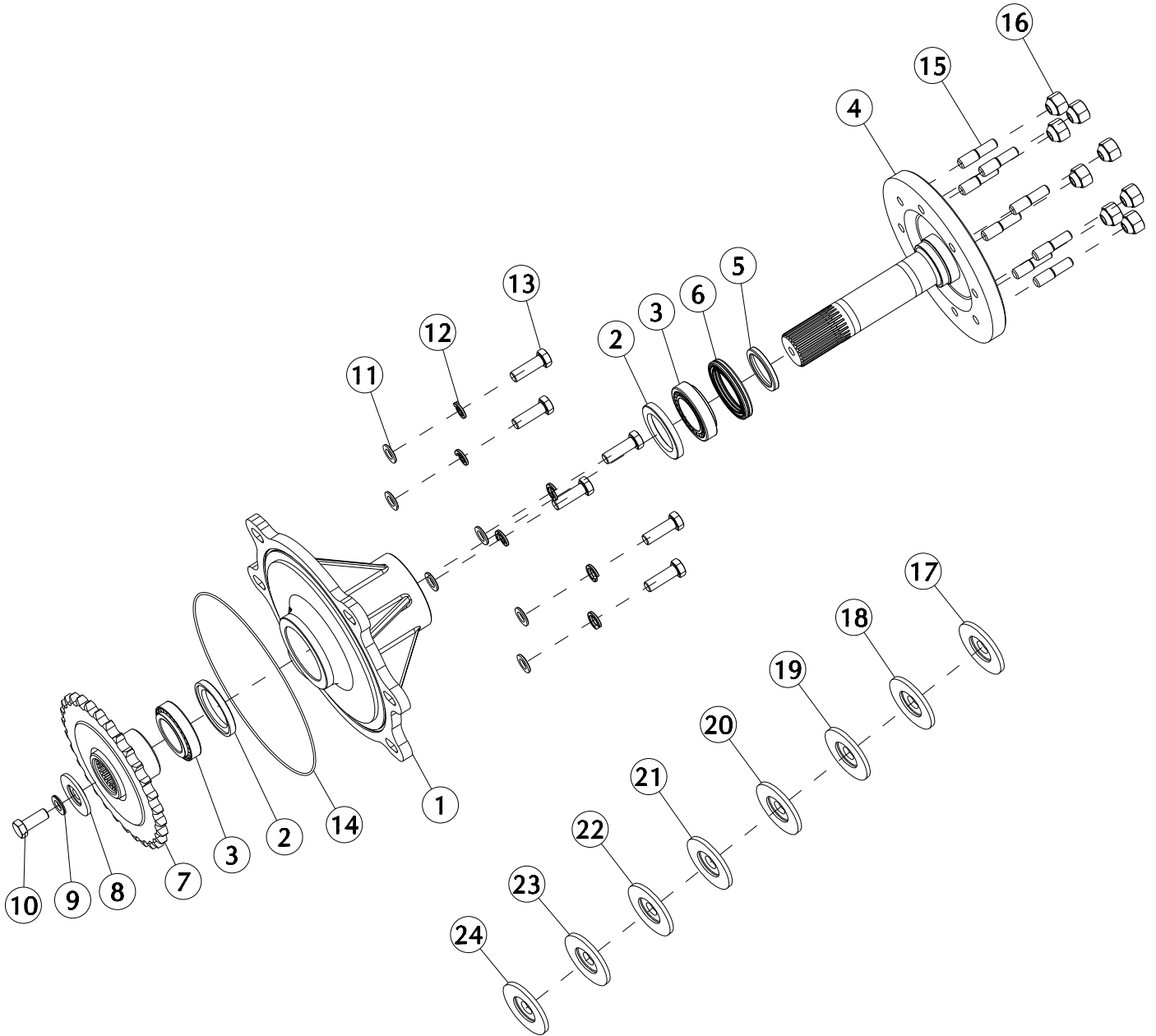
<b>ITEM</b>	<b>PART NO.</b>	<b>REV NO.</b>	<b>DESCRIPTION</b>	<b>QTY</b>	<b>REMARKS</b>
1	2009685	00	COVER	1	
2	2009686	00	COVER	1	
3	2009688	00	SCREW	10	
4	2009687	00	SCREW	2	
5	2009689	00	DISTRIBUTION VALVE	1	
6	2009690	00	PLUG	1	
7	2009691	00	SEAL KIT	1	
8	2009692	00	SEAL KIT	1	
9	2009693	00	SEAL KIT	1	
10	2009695	00	MULTI FUNCTIONAL VALVE	1	
11	2009694	00	SEAL KIT	1	



# WHEEL ASSEMBLY



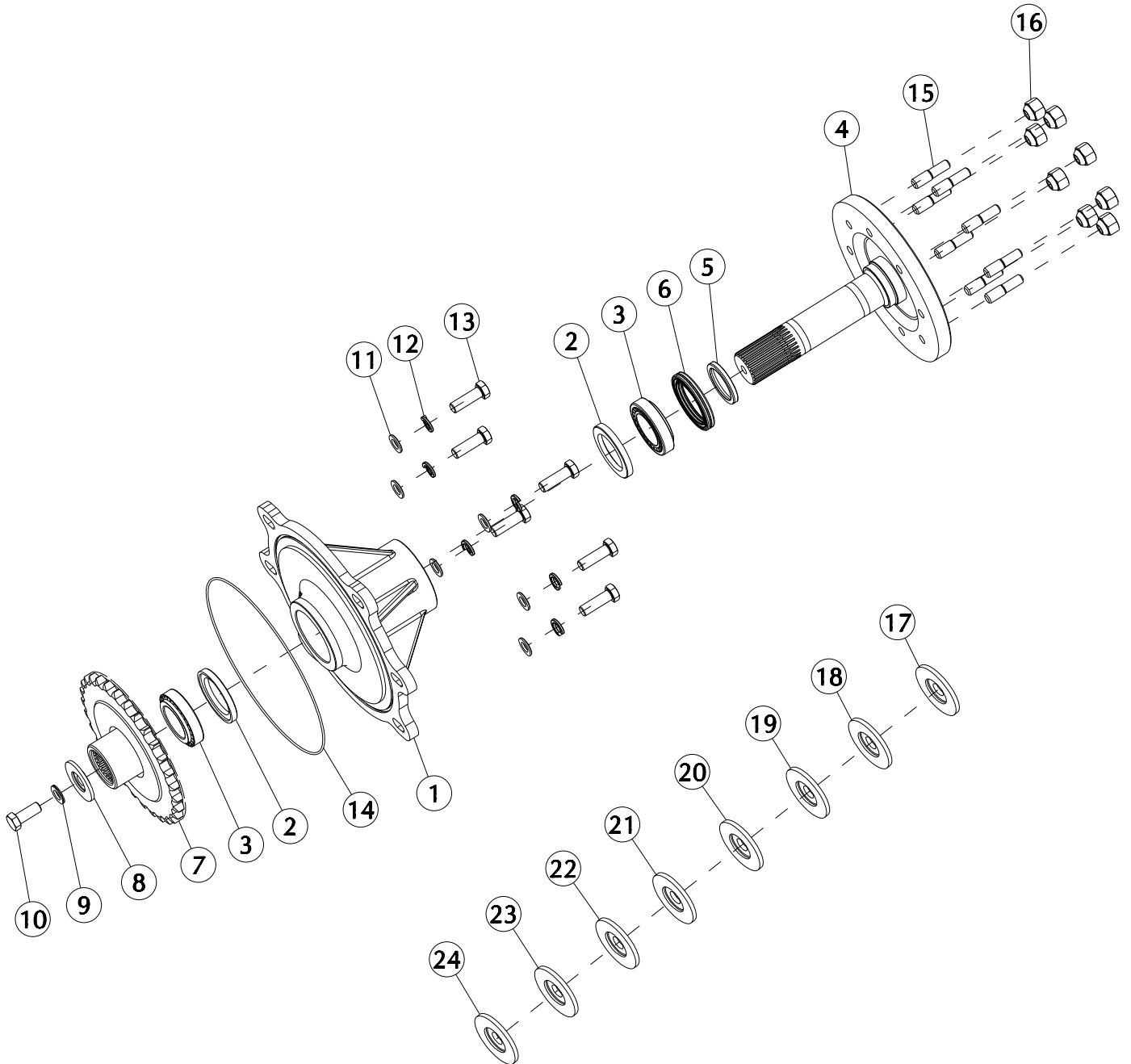
ITEM	PART NO.	REV NO.	DESCRIPTION	QTY	REMARKS
1	7022838	00	WHEEL ASSYSSL	4	
1.1	2007293	00	WHEEL RIM	1	
1.2	2007633	00	VALVE TIRE	1	
1.3	2008297	00	TIRE 10X16.5 - 8 PR	1	
2	7022810	00	WHEEL HUB ASSYREAR SSL	2	
3	7022811	00	WHEEL HUB ASSYFRONT SSL	2	
4	2007291	00	CHAIN SIMPLEX 62 LINK	2	
5	2007290	00	CHAIN SIMPLEX 56 LINK	2	





## FRONT WHEEL HUB ASSEMBLY

ITEM	PART NO.	REV NO.	DESCRIPTION	QTY	REMARKS
1	2008438	02	WHEEL HUB CASTING	1	
2	2011133	01	SPACER WHEEL SHAFT BEARING	2	
3	2008102	00	BEARING 90X55X23	2	
4	2008310	03	SHAFT AXLE ASSY SSL	1	
5	2011132	01	SPACER BEARING MOUNTING SSL	1	
6	2008017	00	SEAL CASSETTE 70X95X13	1	
7	2008311	01	SPROCKET WITH SPLINE ASSY SSL	1	
8	2008313	01	SPACER AXLE SHAFT END SSL 1	1	
9	2004422	00	WASHER WEDGE LOCK M16	1	
10	2001298	00	BOLT M16X40	1	
11	2001774	00	WASHER MACHINED M16	6	
12	2001545	00	WASHER SPRING M16	6	
13	2001289	00	BOLT M16X50	6	
14	2008995	00	O RING	1	
15	2008222	00	STUD M16XM14	8	
16	2008296	00	NUT WHEEL M14	8	
17	7023259	01	SPACER AXLE SHAFT END SSL 2	1	
18	7023260	01	SPACER AXLE SHAFT END SSL 3	1	
19	7023261	01	SPACER AXLE SHAFT END SSL 4	1	
20	7023262	01	SPACER AXLE SHAFT END SSL 5	1	
21	7023263	01	SPACER AXLE SHAFT END SSL 6	1	
22	7023264	01	SPACER AXLE SHAFT END SSL 7	1	
23	7023265	01	SPACER AXLE SHAFT END SSL 8	1	
24	7023266	01	SPACER AXLE SHAFT END SSL 9	1	





ITEM	PART NO.	REV NO.	DESCRIPTION	QTY	REMARKS
1	2008438	02	WHEEL HUB CASTING	1	
2	2011133	01	SPACER WHEEL SHAFT BEARING	2	
3	2008102	00	BEARING 90X55X23	2	
4	2008310	03	SHAFT AXLE ASSY SSL	1	
5	2011132	01	SPACER BEARING MOUNTING SSL	1	
6	2008017	00	SEAL CASSETTE 70X95X13	1	
7	2008311	01	SPROCKET WITH SPLINE ASSY SSL	1	
8	2008313	01	SPACER AXLE SHAFT END SSL 1	1	
9	2004422	00	WASHER WEDGE LOCK M16	1	
10	2001298	00	BOLT M16X40	1	
11	2001774	00	WASHER MACHINED M16	6	
12	2001545	00	WASHER SPRING M16	6	
13	2001289	00	BOLT M16X50	6	
14	2008995	00	O RING	1	
15	2008222	00	STUD M16XM14	8	
16	2008296	00	NUT WHEEL M14	8	
17	7023259	01	SPACER AXLE SHAFT END SSL 2	1	
18	7023260	01	SPACER AXLE SHAFT END SSL 3	1	
19	7023261	01	SPACER AXLE SHAFT END SSL 4	1	
20	7023262	01	SPACER AXLE SHAFT END SSL 5	1	
21	7023263	01	SPACER AXLE SHAFT END SSL 6	1	
22	7023264	01	SPACER AXLE SHAFT END SSL 7	1	
23	7023265	01	SPACER AXLE SHAFT END SSL 8	1	
24	7023266	01	SPACER AXLE SHAFT END SSL 9	1	



# VALVE ASSEMBLY

